

1461 SURVEYOR BLVD.  
= 0+23 LINE "A"  
BUILD 4.0' DIA. MH

1- 12" TAPPING SLEEVE & VALVE  
1- 12" x 6" TEE  
1- 6" VALVE  
1- F.H. (0+50)

0+00 LINDBERGH DR.  
= 1+36 SURVEYOR BLVD.

REMOVE & SALVAGE FIRE  
HYDRANT & VALVE.  
PLUG TEE.

SEE SHT. 7  
FOR CONTINUATION

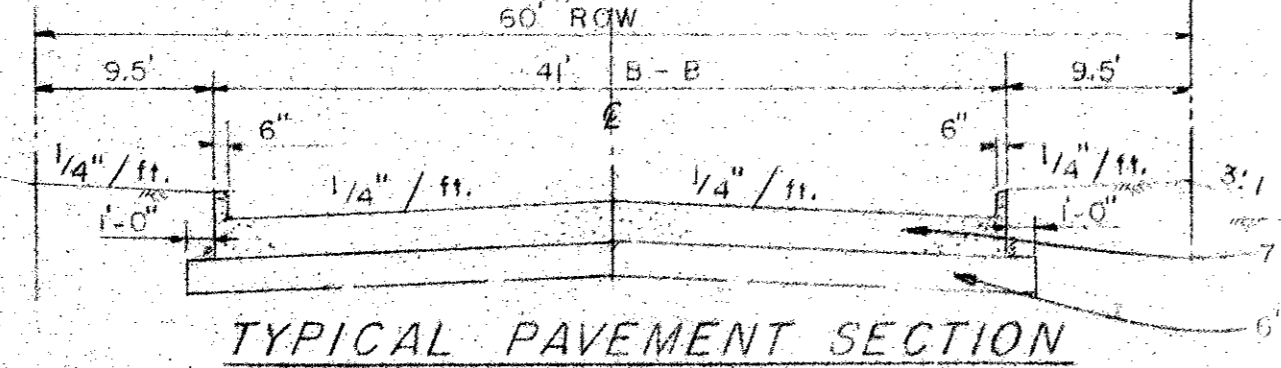
4+92.12 LINE "A"  
= 0+25 LINE "B"  
BUILD 4.0' DIA. MH

0+55 INLET  
603.95 T.C.  
600.95 F.L.

0+77 INLET  
604.04 T.C.  
600.04 F.L.

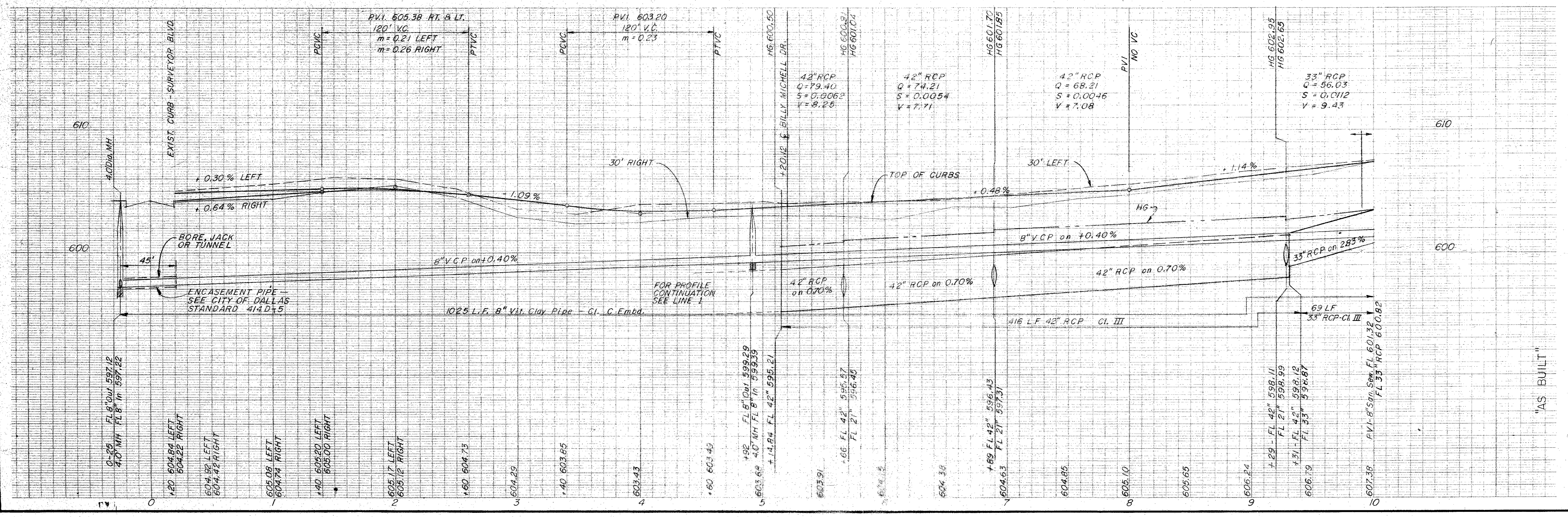
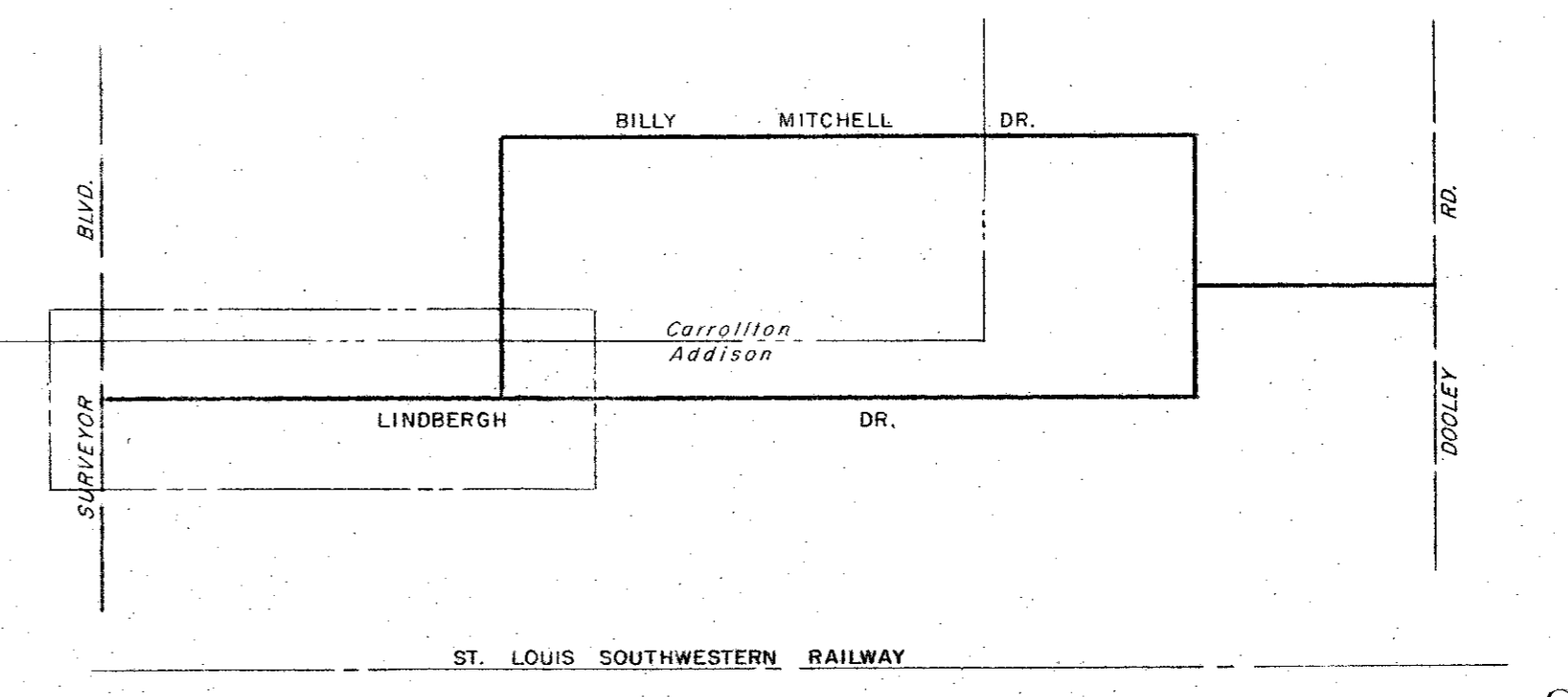
7+00 INLET  
604.38 T.C.  
600.38 F.L.

9+40 INLET  
606.70 T.C.  
602.70 F.L.

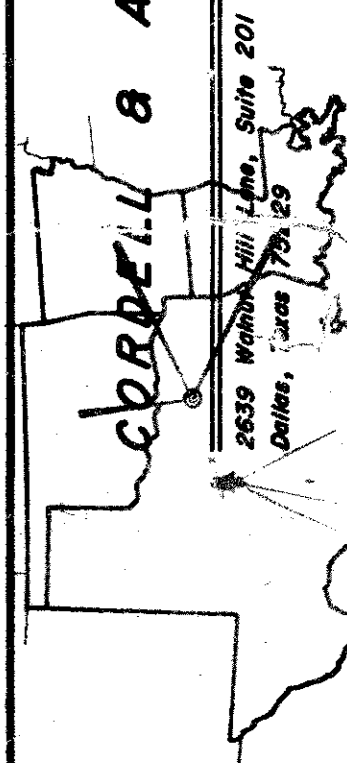


NOTE:  
ALL INLET LEADS  
SHALL BE CLASS III  
PIPE UNLESS OTHER-  
WISE NOTED.

B.M.  
60d Nail in Power Pole North of  
St. L. Sw. RY. & East of Surveyor Blvd.  
Elev. 602.18



**CORBETT & ASSOCIATES, INC.**  
consulting engineers  
(817) 332-0822

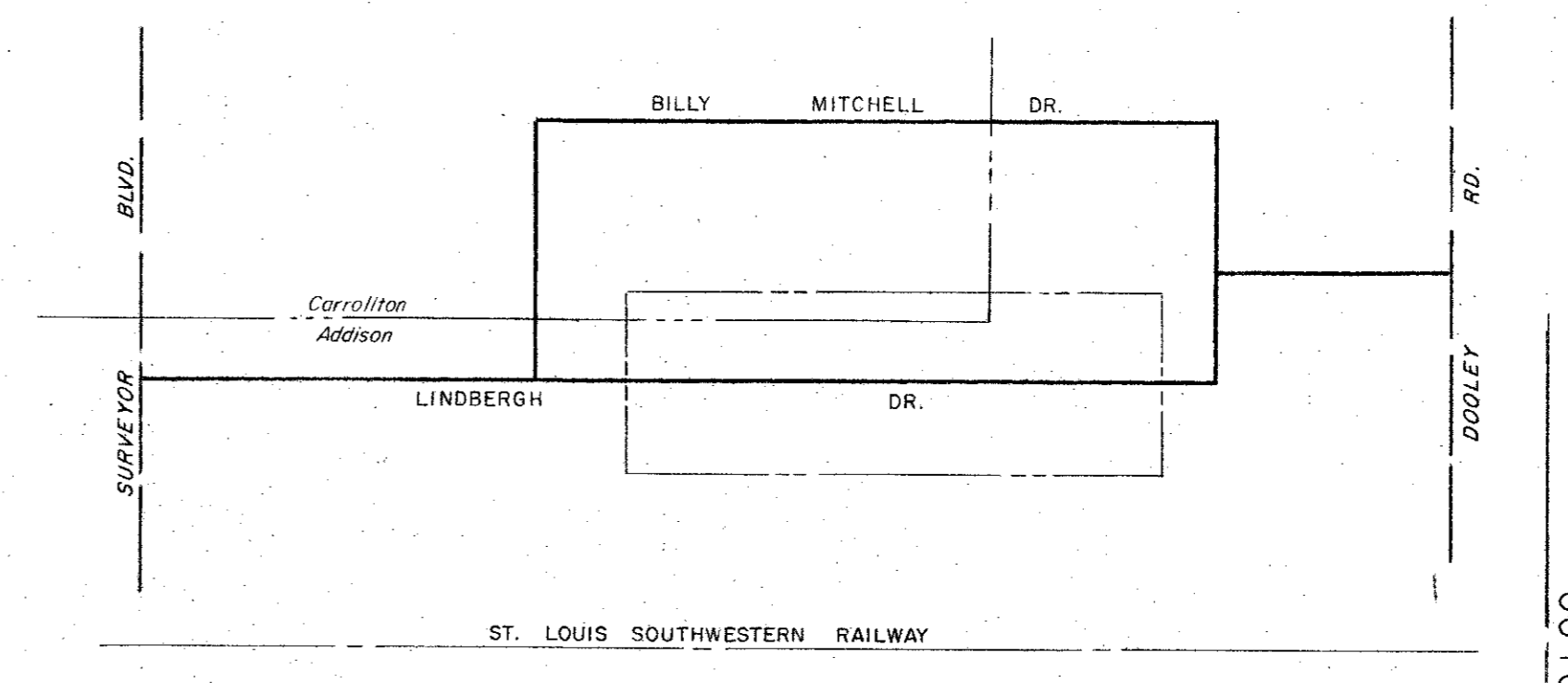
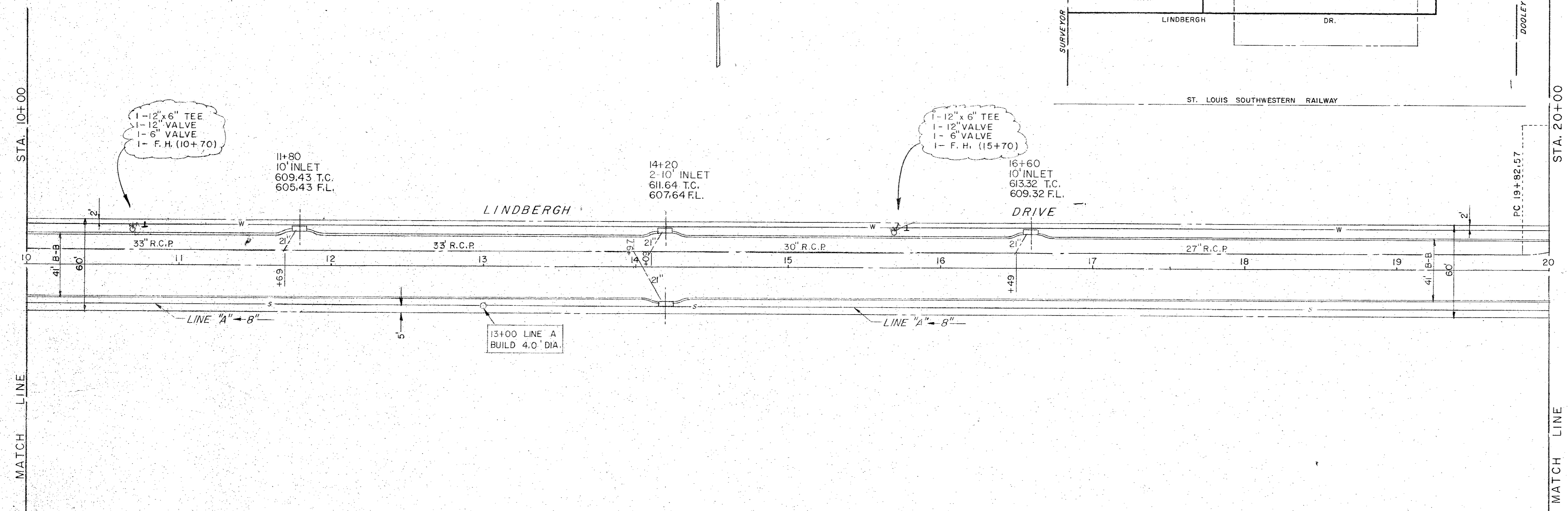


LINDBERGH DRIVE  
PAVING AND UTILITIES  
ADDISON WEST INDUSTRIAL PARK  
DEPARTMENT OF PUBLIC WORKS  
CITY OF ADDISON, TEXAS

DATE Sept., 1972

SHEET

DWG. NO. 70-3.2-5



1-12" x 6" TEE  
1-12" VALVE  
1-6" VALVE  
1- F.H. (10+70)

1-12" x 6" TEE  
1-12" VALVE  
1-6" VALVE  
1- F.H. (15+70)

11+80  
10' INLET  
609.43 T.C.  
605.43 F.L.

14+20  
2-10' INLET  
611.64 T.C.  
607.64 F.L.

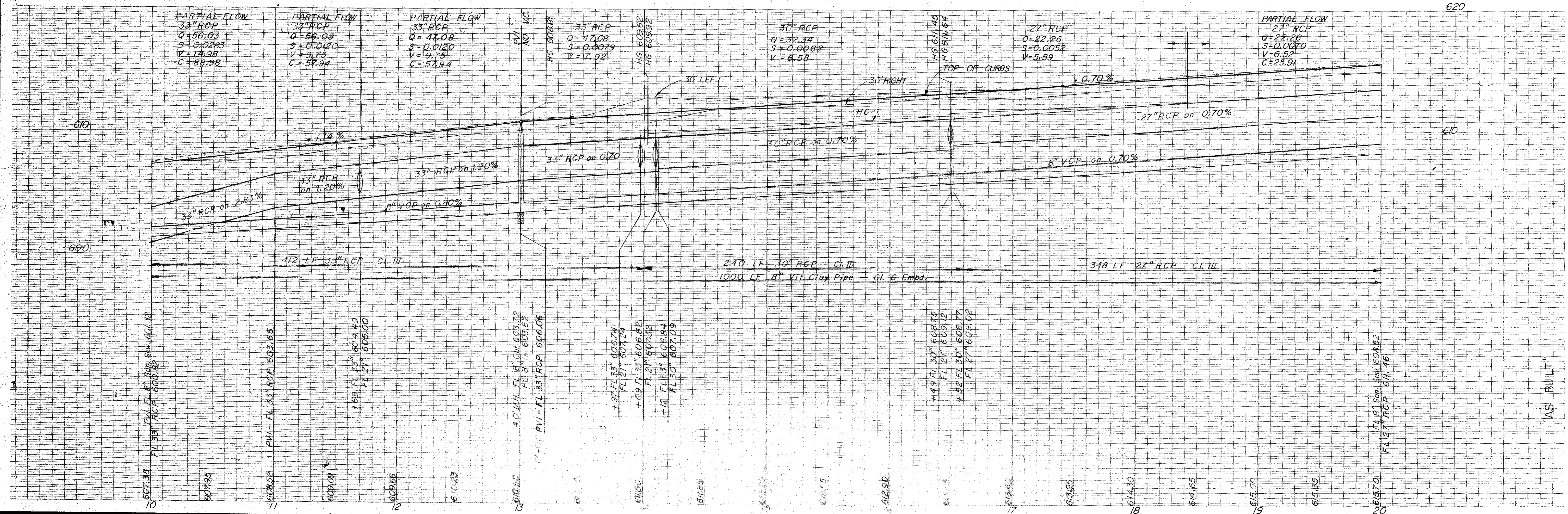
16+60  
10' INLET  
613.32 T.C.  
609.32 F.L.

MATCH LINE

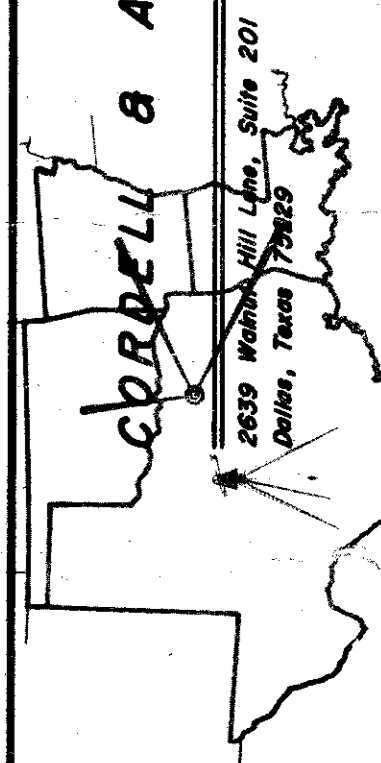
MATCH LINE

SEE NOTES, SHEET 2

B.M.  
60d Nail in Power Pole North of  
St. L. Sw. Ry. & East of Surveyor Blvd.  
Elev. 602.18



**CORBELL & ASSOCIATES, INC.**  
consulting engineers  
(814) 352-0882

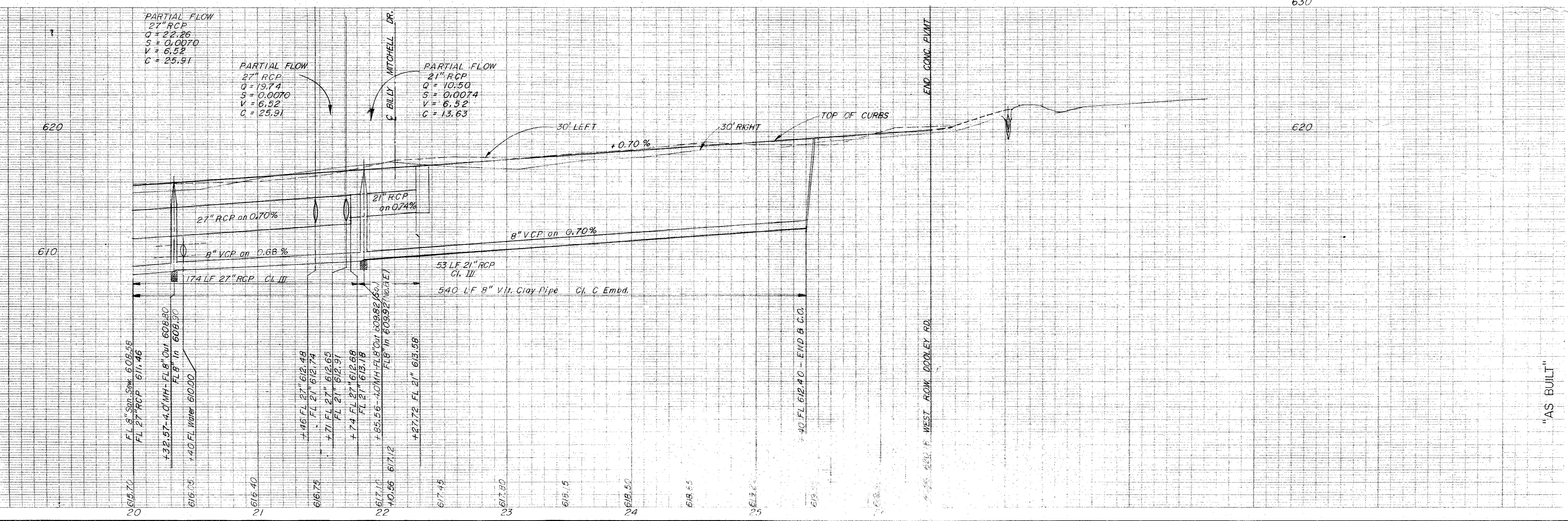
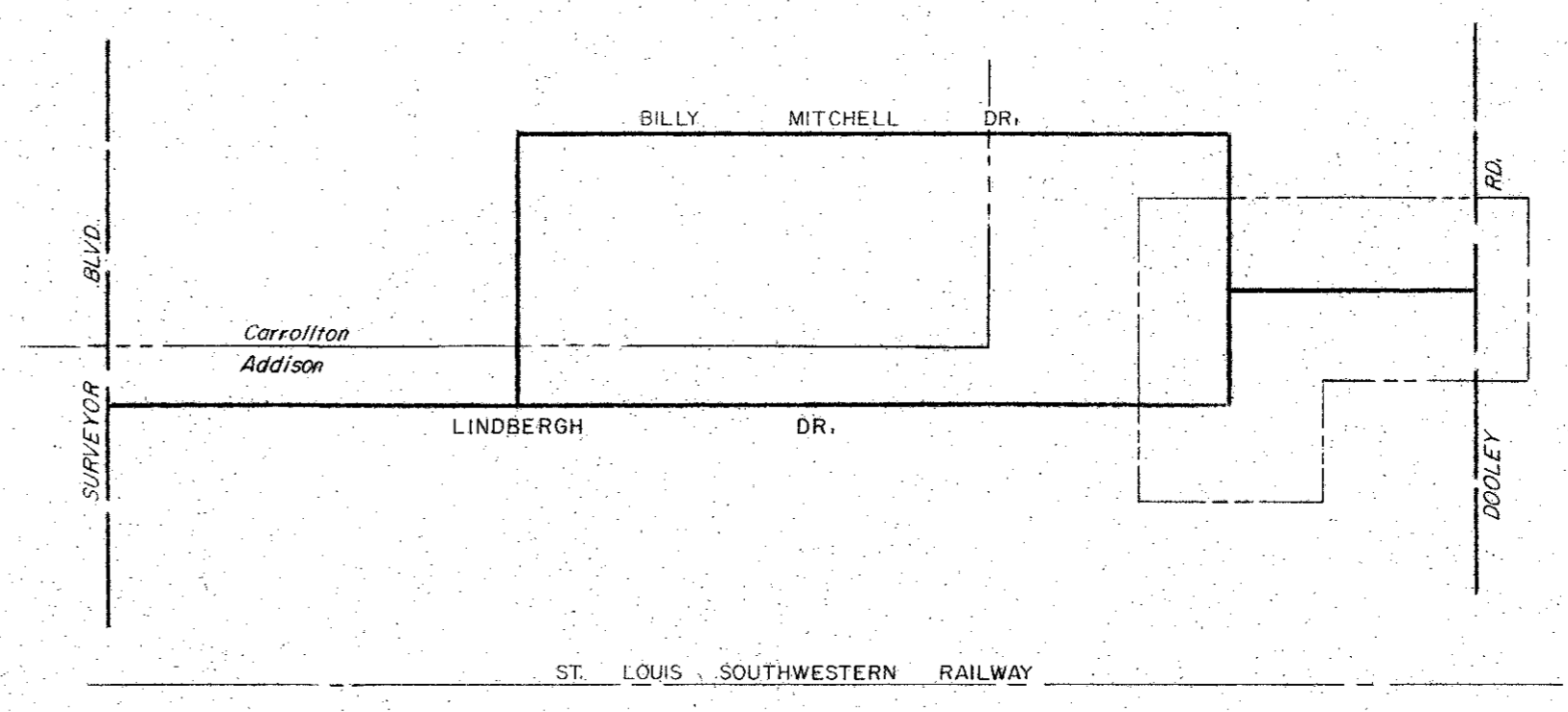
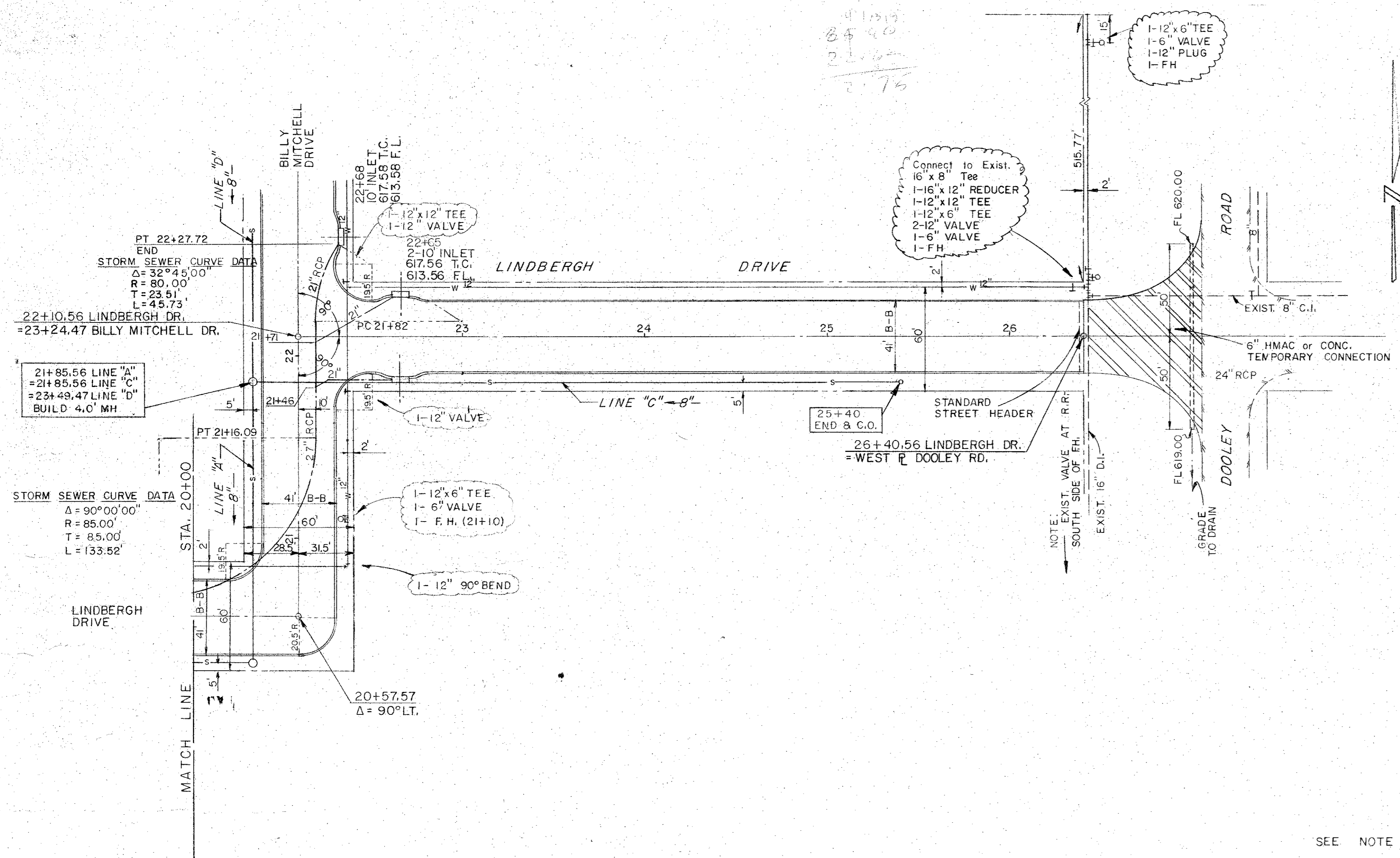


LINDBERGH DRIVE  
PAVING AND UTILITIES  
ADDISON WEST INDUSTRIAL PARK  
DEPARTMENT OF PUBLIC WORKS  
CITY OF ADDISON, TEXAS

DATE Sept., 1972

SHEET  
3  
7

DWG. NO. 70-32-6

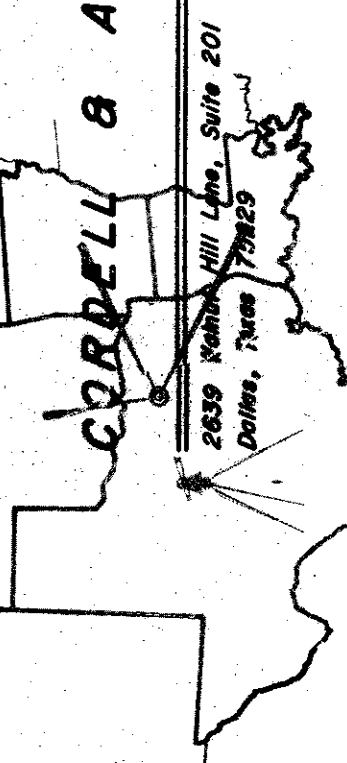


B.M.  
60d Nail in Power Pole North of St. L. Sw. Ry.  
& East of Surveyor Blvd.  
Elev. 602.18

SEE NOTE SHEET 2



**CORBELL & ASSOCIATES, INC.**  
consulting engineers  
(914) 382-0862

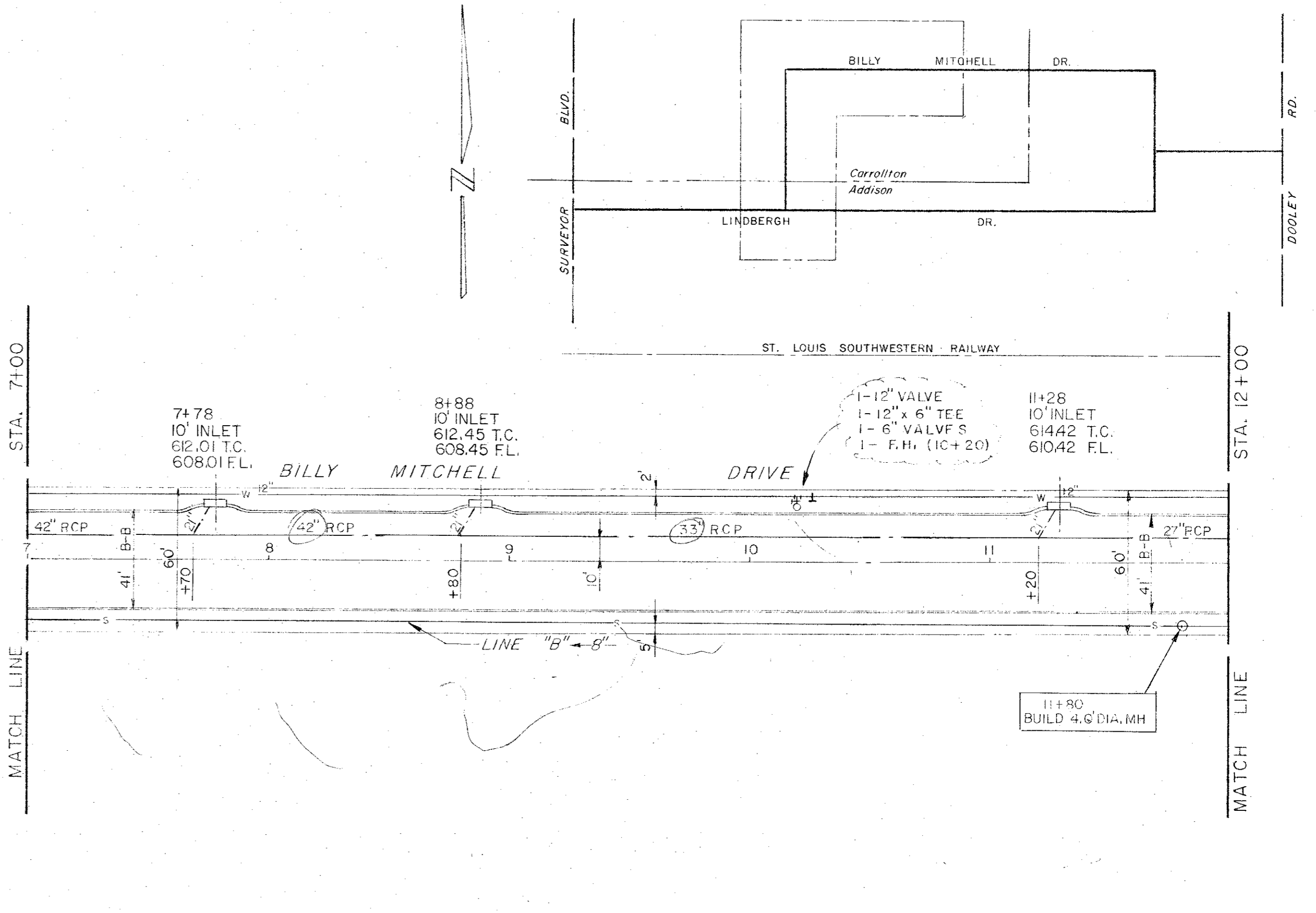
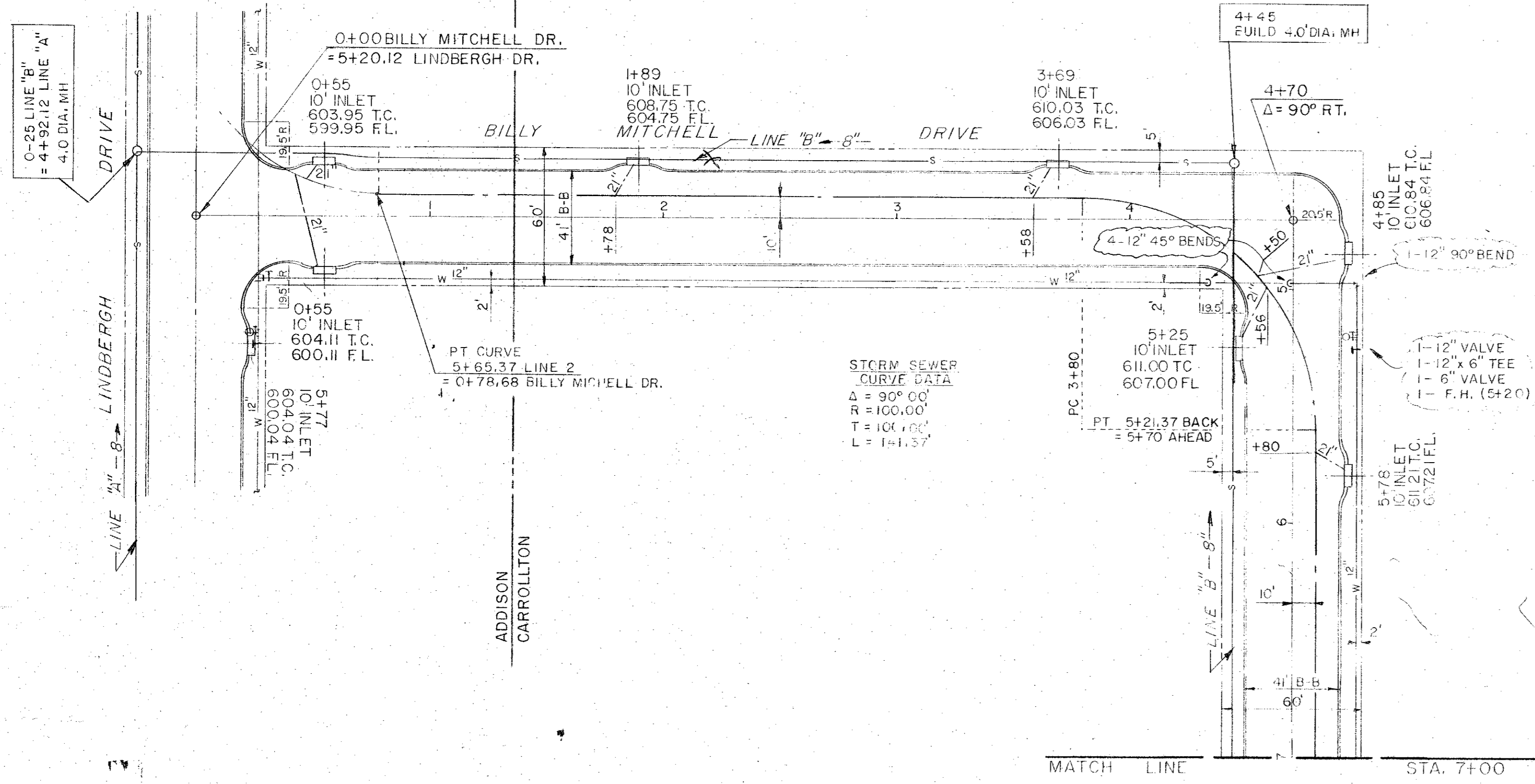


LINDBERGH DRIVE  
PAVING AND UTILITIES  
ADDISON WEST INDUSTRIAL PARK  
DEPARTMENT OF PUBLIC WORKS  
CITY OF ADDISON, TEXAS

DATE Sept 1972

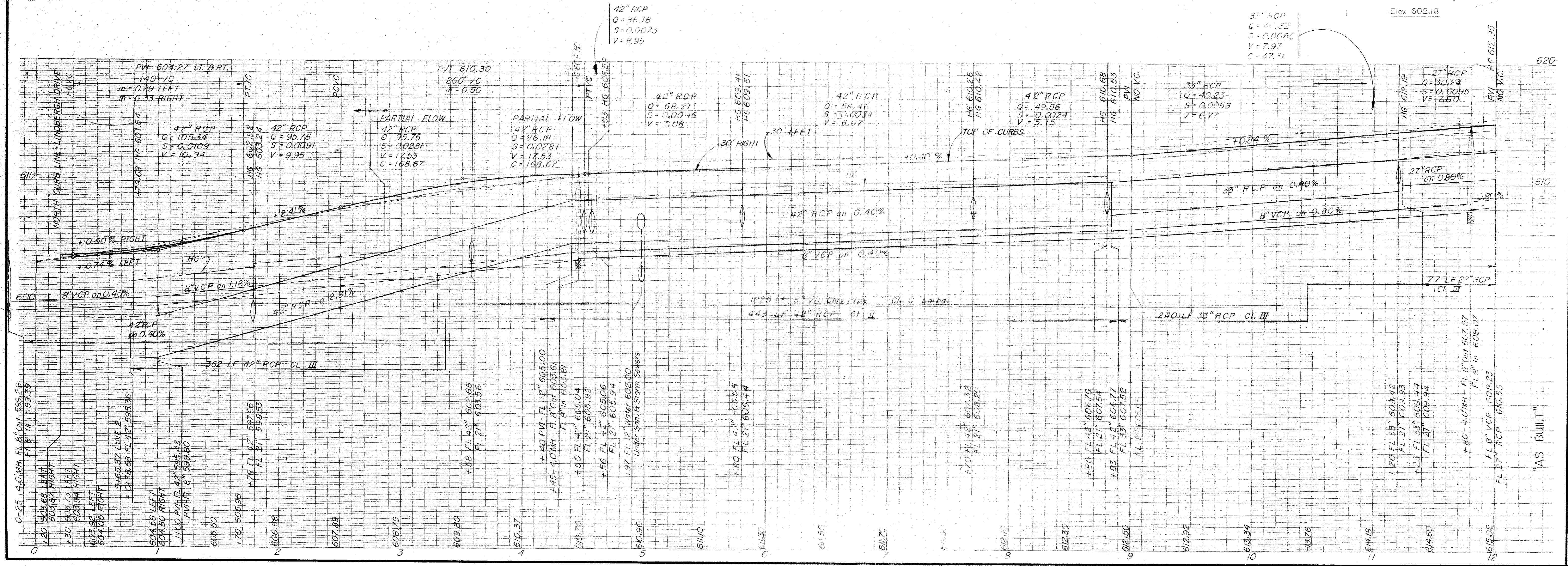
SHEET  
4  
7

DWG. NO. 70-32-7



SEE NOTES, SHEET 2

B.M.  
60d Nail in Power Pole North of  
St. L. Sw. Ry. East of Surveyor Blvd.  
Elev. 602.18



**CORDELL & ASSOCIATES, INC.**  
consulting engineers  
2639 Walnut Hill Lane, Suite 201  
Dallas, Texas 75225  
(214) 352-0822

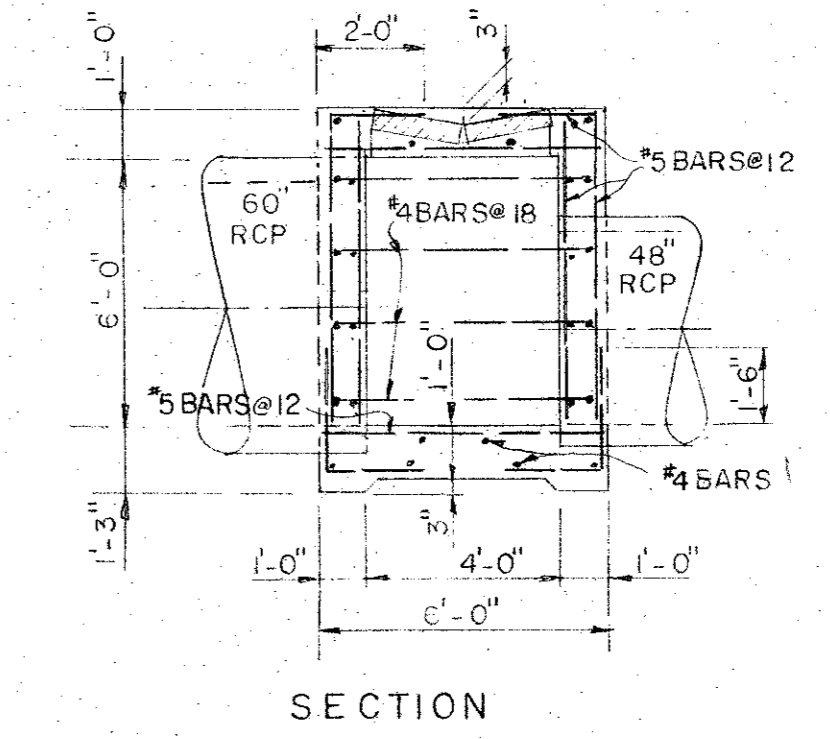
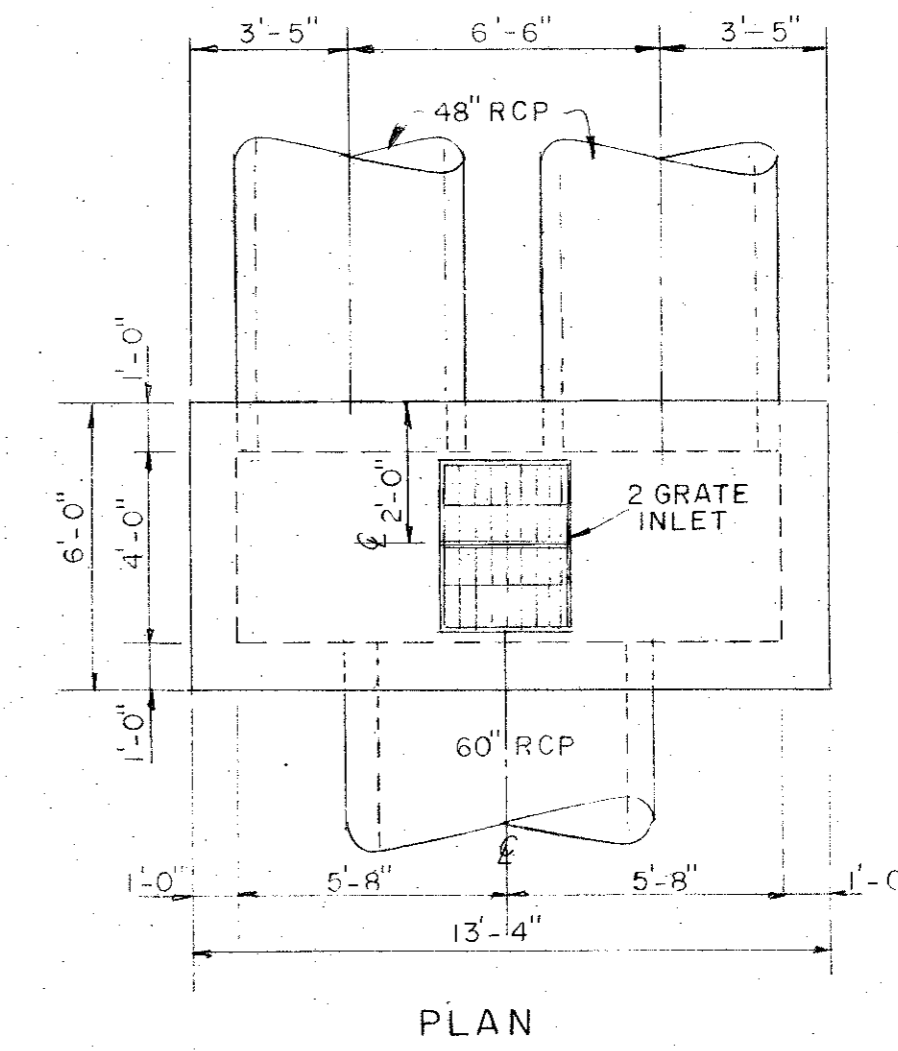
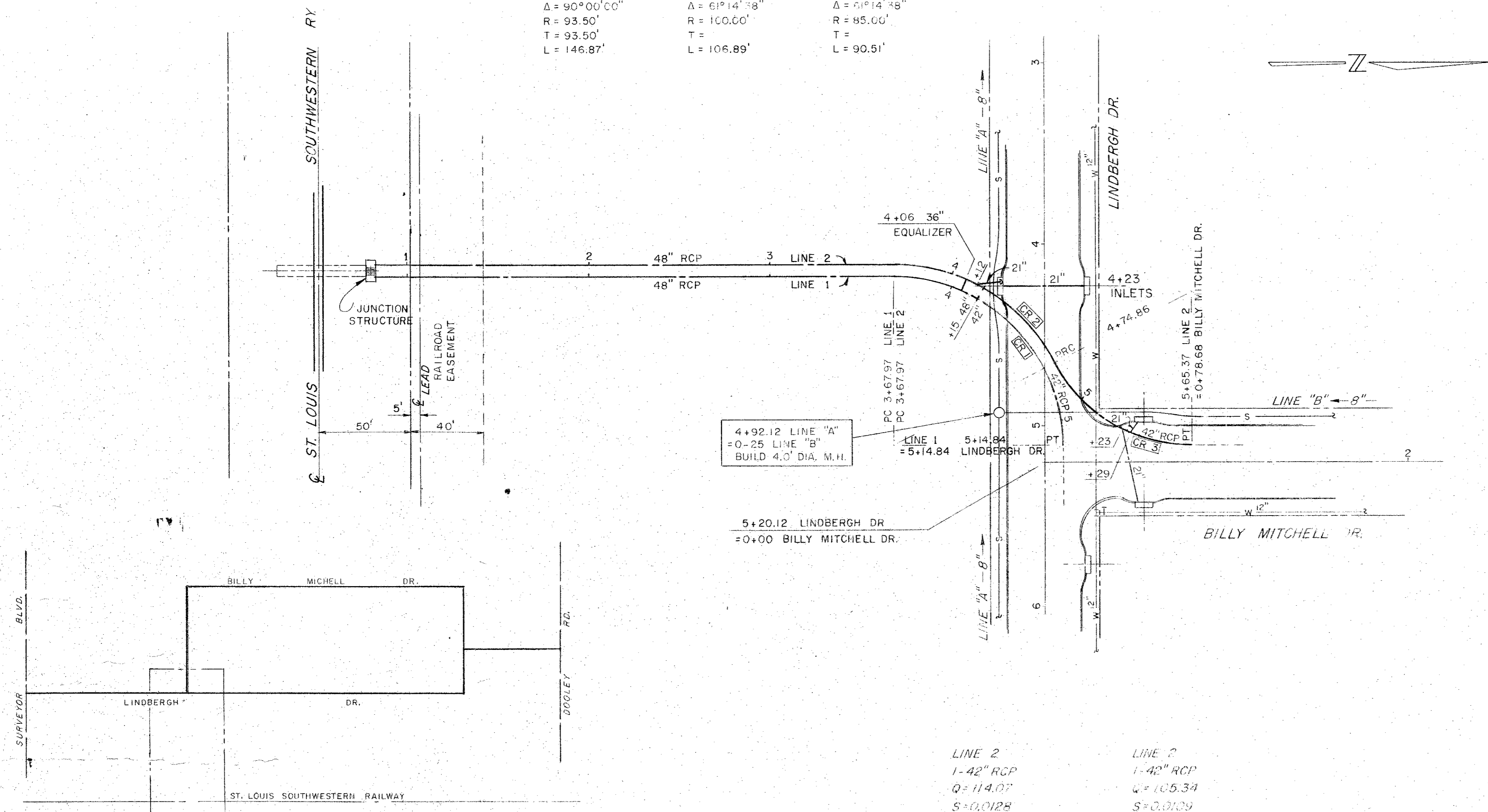
**BILLY MITCHELL DRIVE**  
PAVING AND UTILITIES  
ADDITION WEST INDUSTRIAL PARK  
DEPARTMENT OF PUBLIC WORKS  
Cities of Addison & Carrollton, Texas

DATE Sept. 1972  
SHEET 10  
DWG. NO. 70-32-8



STORM SEWER CURVE DATA

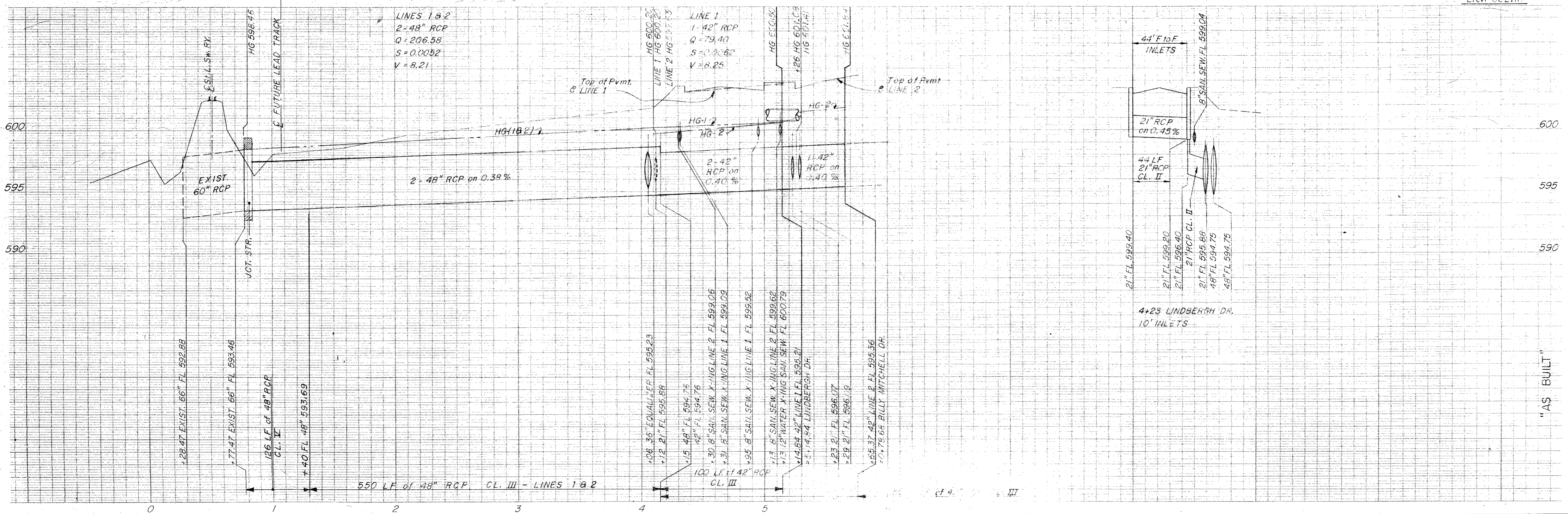
| CR 1                         | CR 2                         | CR 3                         |
|------------------------------|------------------------------|------------------------------|
| $\Delta = 90^{\circ}00'00''$ | $\Delta = 61^{\circ}14'38''$ | $\Delta = 61^{\circ}14'38''$ |
| $R = 93.50'$                 | $R = 100.00'$                | $R = 85.00'$                 |
| $T = 93.50'$                 | $T =$                        | $T =$                        |
| $L = 146.87'$                | $L = 106.89'$                | $L = 90.51'$                 |



SECTION  
JUNCTION STRUCTURE

SEE NOTES, SHEET 2

B.M. 60d Nail in Power Pole North of St. L. Sw. Ry. & East of Surveyor Blvd. Elev. 602.18



"AS BUILT"

**CORBELL & ASSOCIATES, INC.**  
consulting engineers  
2609 Walnut Hill Lane, Suite 201  
Dallas, Texas 75228  
(214) 352-0882

STORM SEWERS - LINES 1 & 2  
PAVING AND UTILITIES  
ADDISON WEST INDUSTRIAL PARK  
DEPARTMENT OF PUBLIC WORKS  
CITY OF ADDISON, TEXAS

DATE Sept., 1972  
SHEET 7  
DWG. NO. 70-32-4