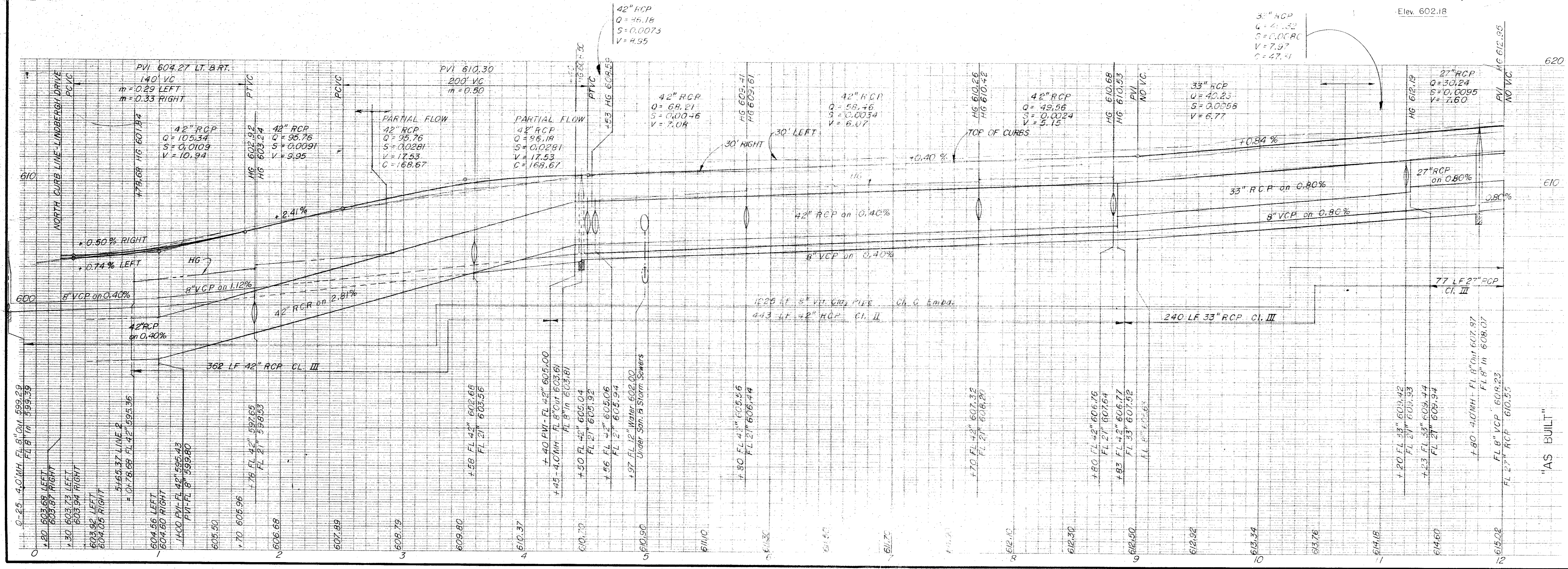
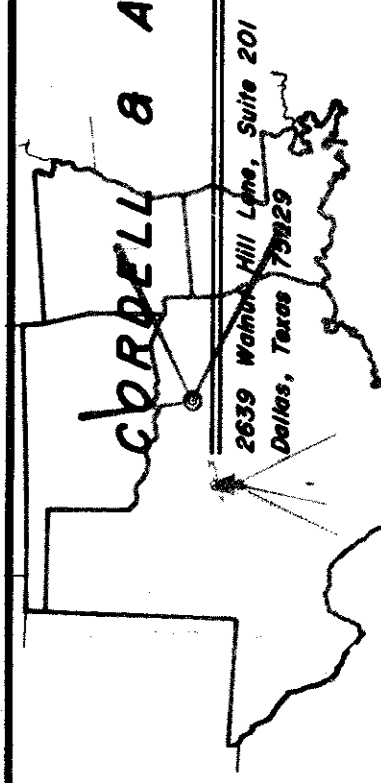


SEE NOTES, SHEET 2

B.M.
60d Nail in Power Pole North of
St. L. Sw. Ry. East of Surveyor Blvd.
Elev. 602.18



CORDELL & ASSOCIATES, INC.
consulting engineers
(214) 352-0822



BILLY MITCHELL DRIVE
PAVING AND UTILITIES
ADDITION WEST INDUSTRIAL PARK
DEPARTMENT OF PUBLIC WORKS
Cities of Addison & Carrollton, Texas

DATE Sept. 1972
SHEET
DWG. NO. 70-32-8