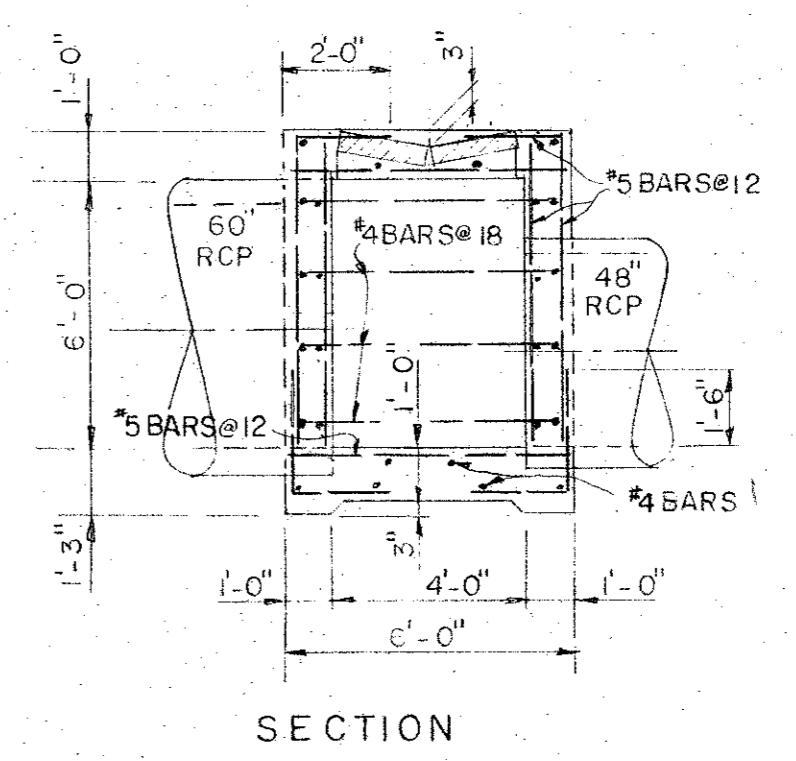
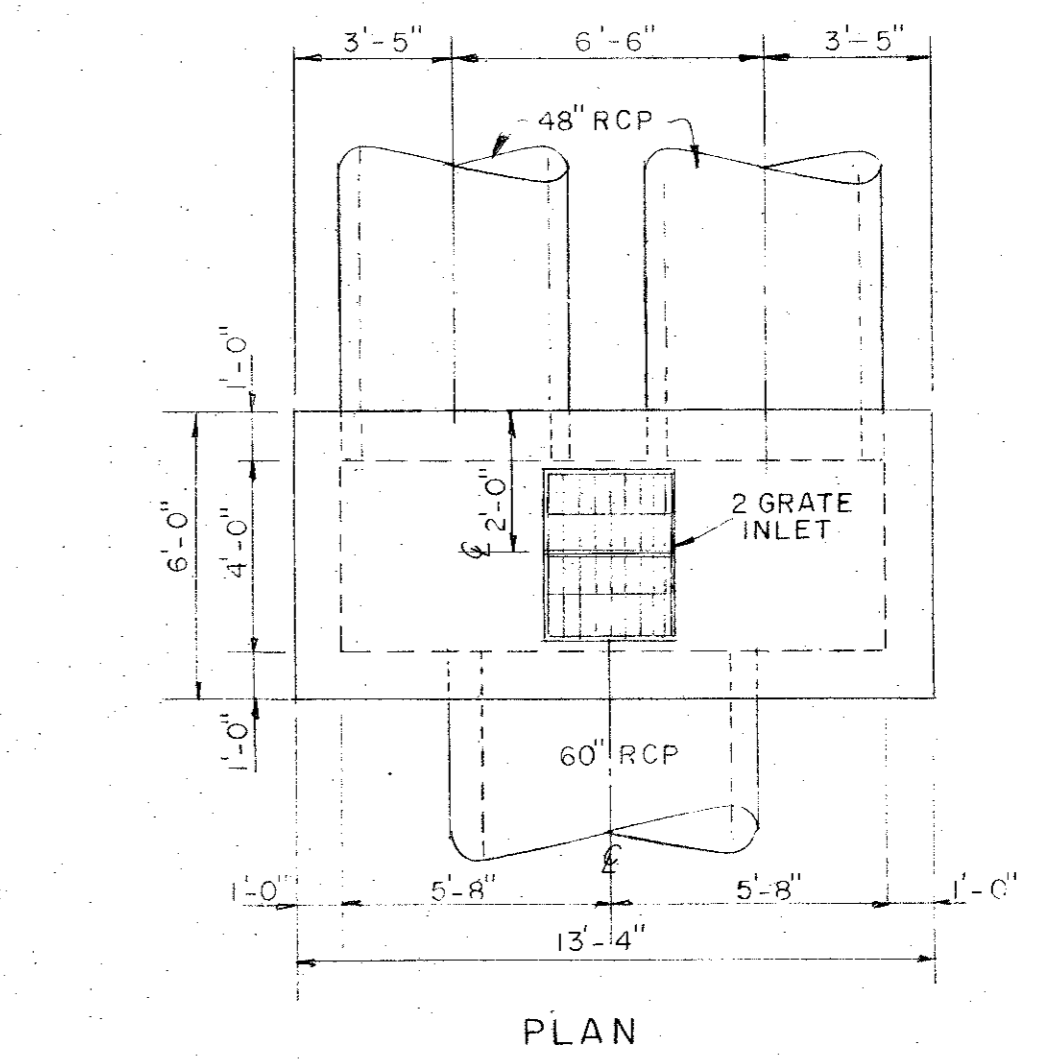
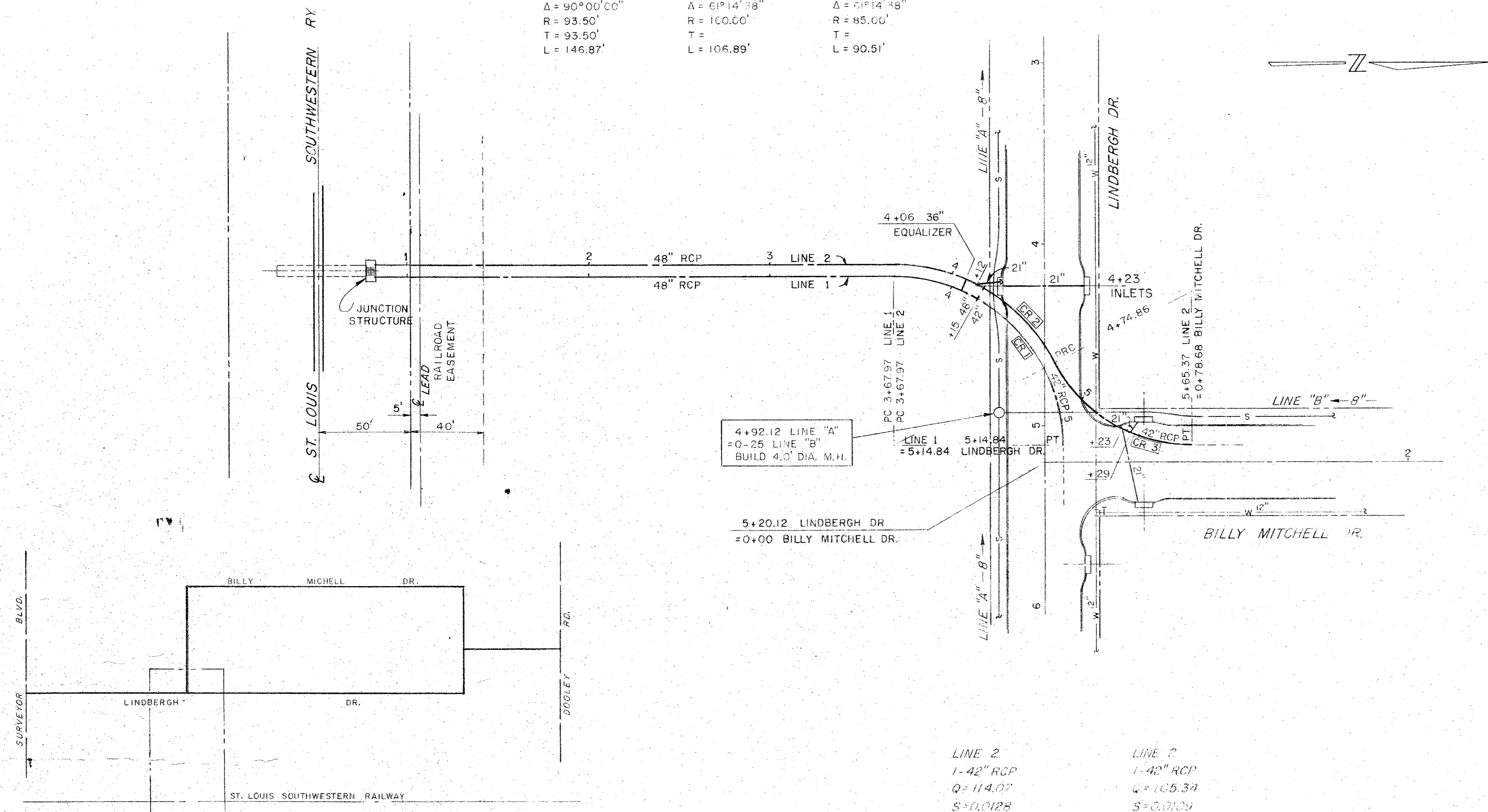


STORM SEWER CURVE DATA

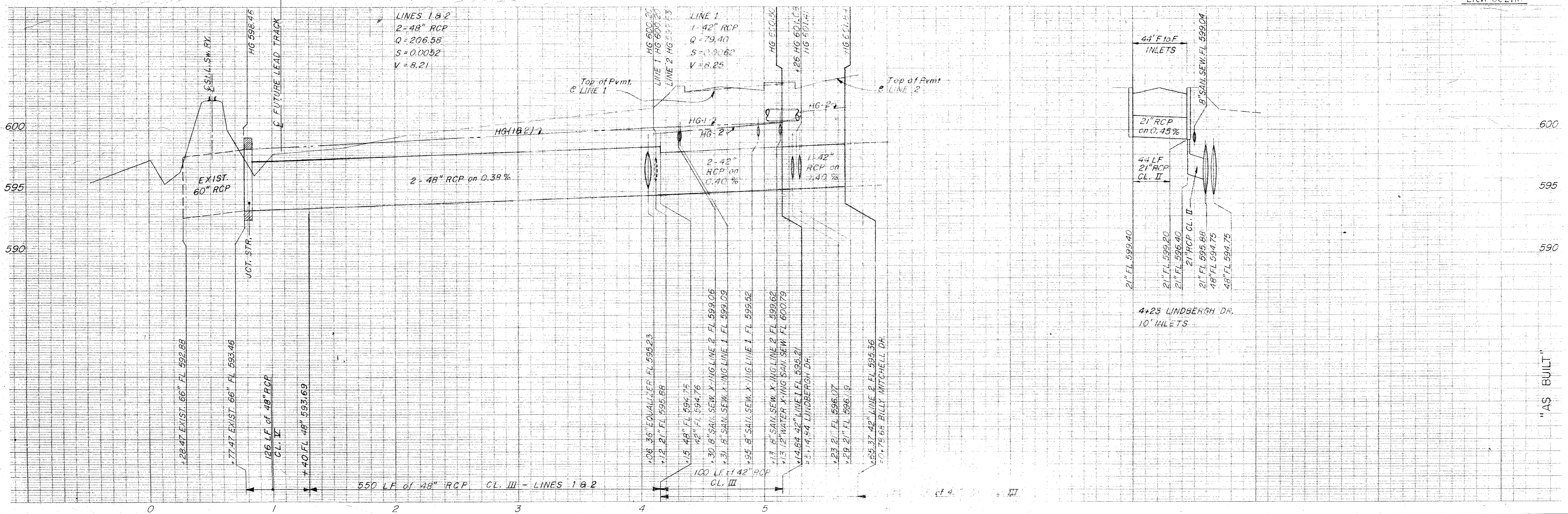
CR 1	CR 2	CR 3
$\Delta = 90^{\circ}00'00''$	$\Delta = 61^{\circ}14'38''$	$\Delta = 61^{\circ}14'38''$
$R = 93.50'$	$R = 100.00'$	$R = 85.00'$
$T = 93.50'$	$T =$	$T =$
$L = 146.87'$	$L = 106.89'$	$L = 90.51'$



JUNCTION STRUCTURE

SEE NOTES, SHEET 2

B.M. 60d Nail in Power Pole North of St. L. Sw. Ry. & East of Surveyor Blvd. Elev. 602.1R



**CORBELL & ASSOCIATES, INC.**  
consulting engineers  
2609 Walnut Hill Lane, Suite 201  
Dallas, Texas 75225  
(214) 352-0882

STORM SEWERS - LINES 1 & 2  
PAVING AND UTILITIES  
ADDISON WEST INDUSTRIAL PARK  
DEPARTMENT OF PUBLIC WORKS  
CITY OF ADDISON, TEXAS

DATE Sept., 1972

SHEET

7

DWG. NO. 70-32-4