

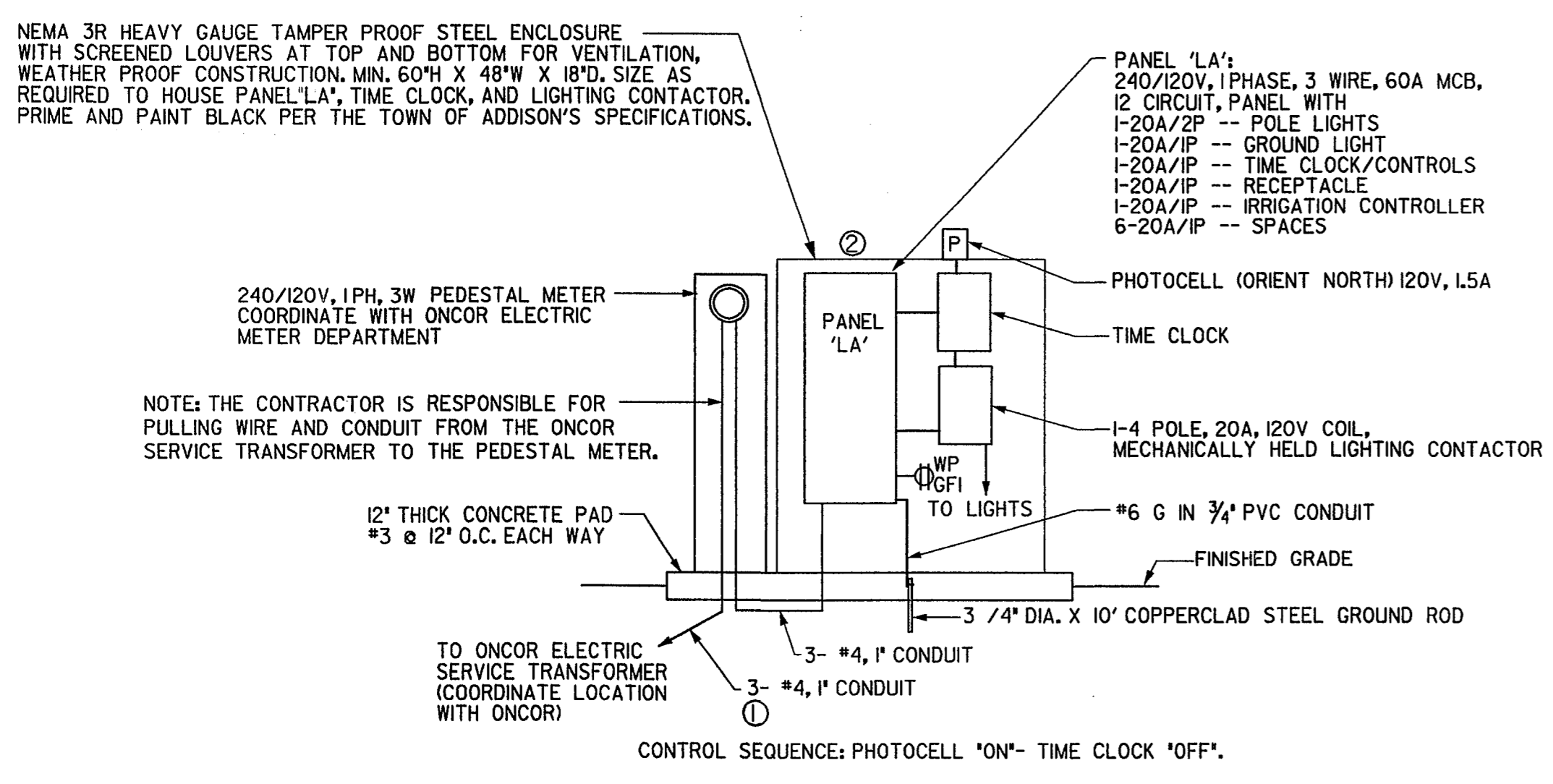
BROOKHAVEN CLUB DRIVE

MARSH LANE



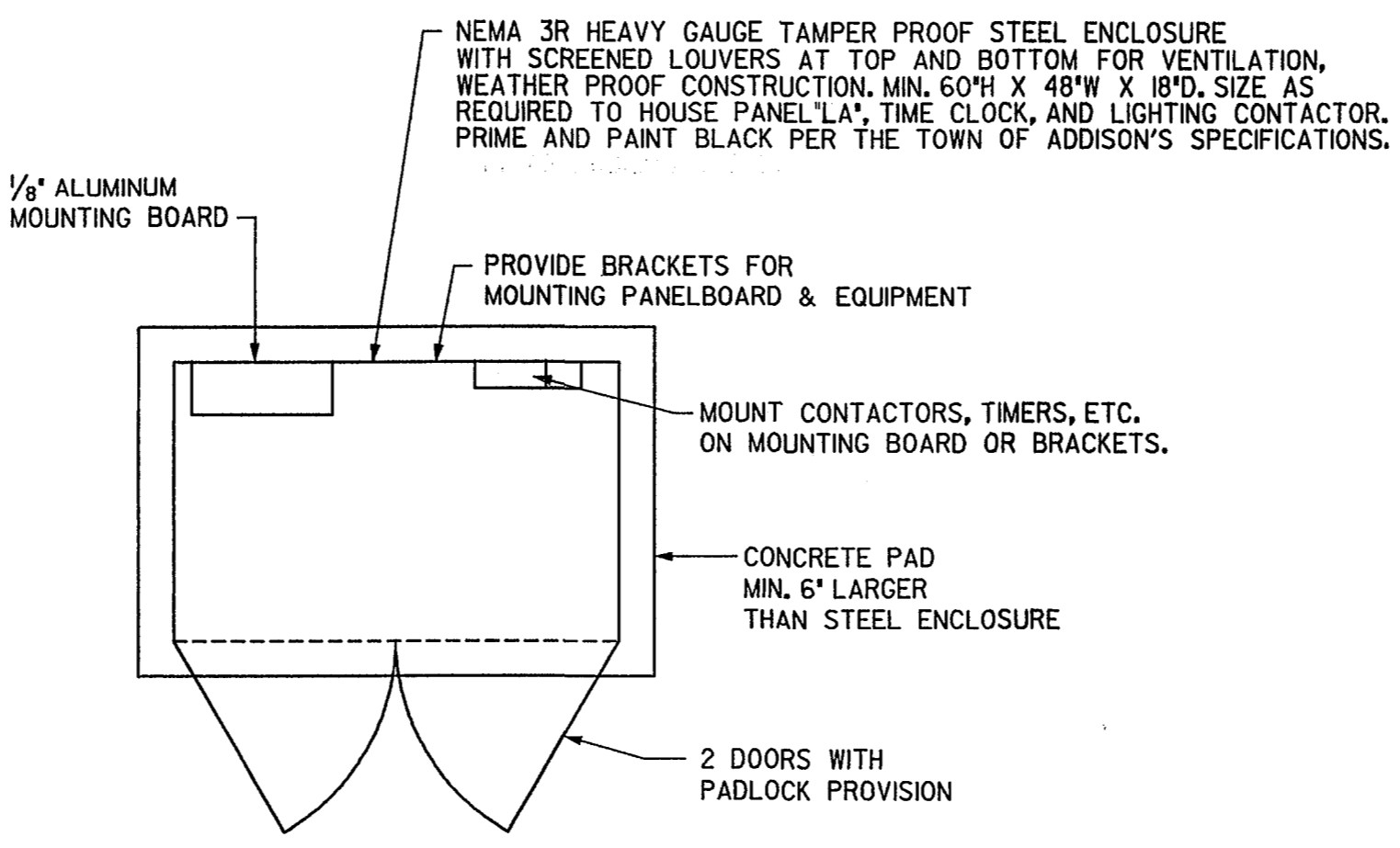
LIGHTING LEGEND

● LIGHT POLE & FIXTURE



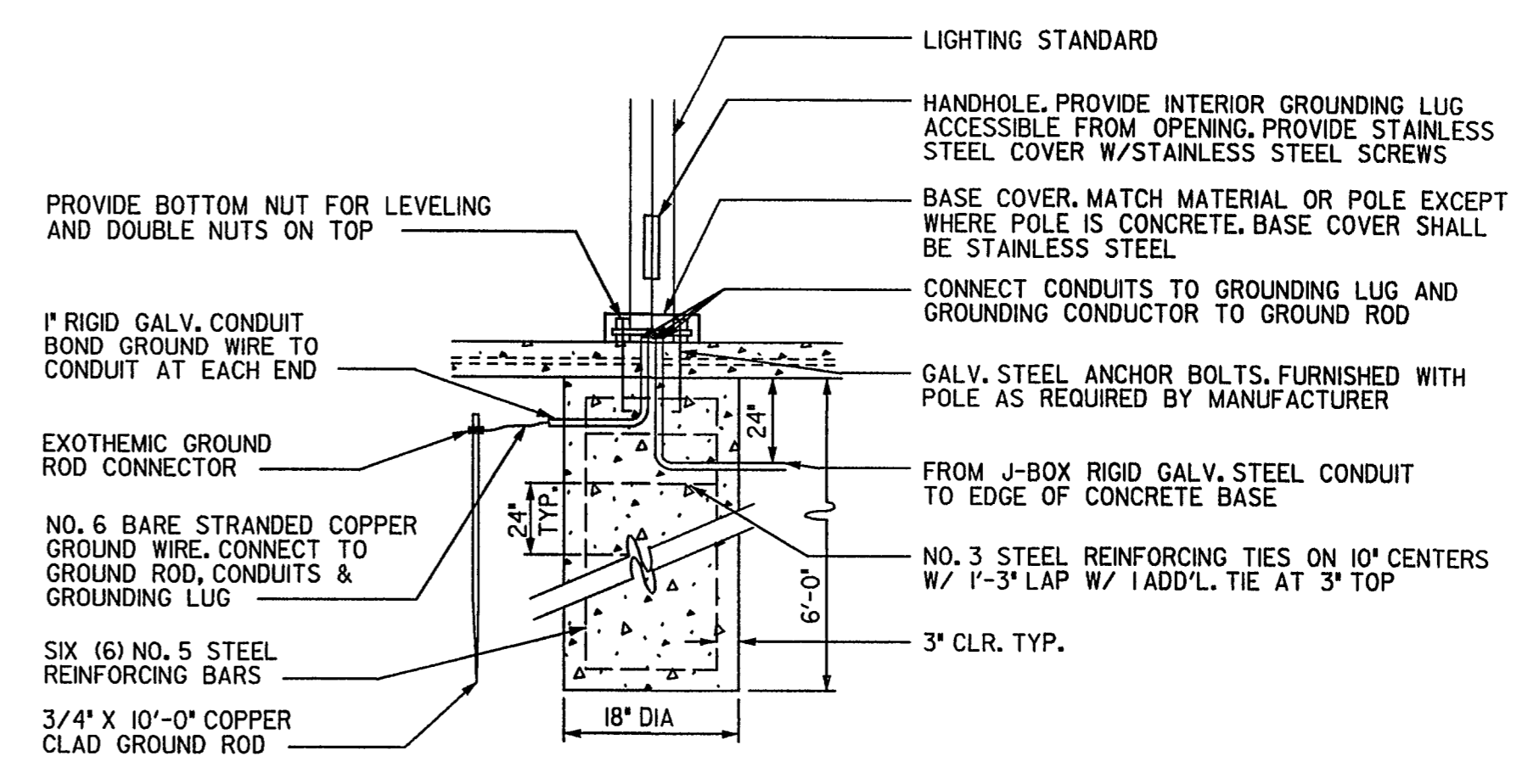
ELECTRICAL RISER DIAGRAM

NOT TO SCALE



EQUIPMENT ENCLOSURE DETAIL - PLAN

NOT TO SCALE

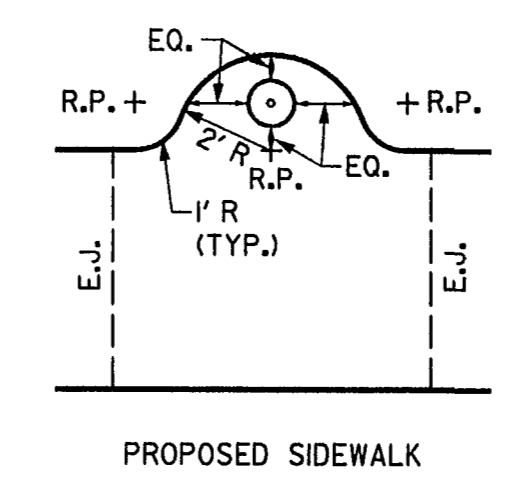


POLE BASE DIAGRAM

NOT TO SCALE

NOTE: ALL LIGHT STANDARDS LOCATED IN PLANTING BEDS (SEE PLANS) SHALL HAVE THE TOP OF THEIR CONCRETE POLE BASE EXTENDED 7" TO MEET FINISH GRADE.

LIGHT FIXTURE SHALL BE: STERNER CORONA CC-A-2H-10-2H-175H 240 E WITH 175W MH LAMP MOUNTED TO A STERNER RSA II-C-E POLE. BOTH POLE AND FIXTURE SHALL BE A BLACK FINISH.



LIGHT FIXTURE & POLE

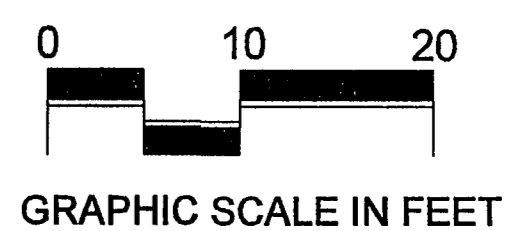
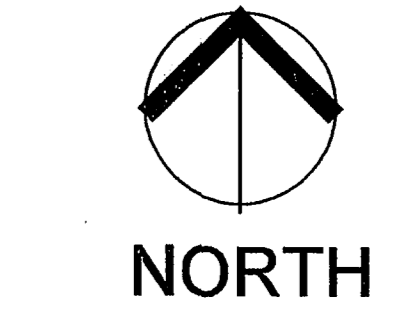
SCALE: 1/4" = 1'-0"

NOTES BY SYMBOL

- ① CONTRACTOR SHOULD COORDINATE WITH ONCOR ELECTRIC ON EXACT LOCATION FOR SOURCE OF POWER. INSTALL SERVICE AS INDICATED. (APPROXIMATELY 20')
- ② MOUNT ALL ELECTRICAL EQUIPMENT ON A GALVANIZED UNISTRUT RACK. SEE PLAN & DETAILS THIS SHEET

GENERAL NOTES

1. ALL ELECTRICAL WORK SHALL BE IN CONFORMANCE WITH LATEST EDITION OF THE NATIONAL ELECTRICAL CODE AND ALL LOCAL CITY OF ADDISON ELECTRICAL CODES IN EFFECT.
2. ALL CONDUCTORS SHALL BE COPPER, TYPE THHW OR RHW AND INSTALLED IN CONDUIT.
3. COORDINATE EXACT LOCATIONS OF ALL LIGHT FIXTURES AND ELECTRICAL EQUIPMENT WITH LANDSCAPE ARCHITECT PRIOR TO INSTALLATION.
4. CONTRACTOR SHALL BORE UNDER ALL EXISTING SIDEWALKS AND STREETS TO ACCOMMODATE CONDUIT CROSSINGS UNDER EXISTING PAVEMENT.
5. ALL CONDUITS SHALL BE INSTALLED WITH A MINIMUM OF 24 INCHES OF COVER
6. ALL CONDUIT IN CONTACT WITH CONCRETE SHALL BE GALVANIZED RIGID STEEL.
7. ALL DIMENSIONS ARE APPROXIMATE. THE CONTRACTOR IS RESPONSIBLE FOR FIELD VERIFICATION OF ALL DIMENSIONING FOR THE ELECTRICAL EQUIPMENT.



BROOKHAVEN CLUB DRIVE PARK
 Town of Addison
 Parks Recreation & Landscape Development
 P.O. Box 9010
 Addison, Texas 75010

F&A JOB NUMBER: 0228

DATE ISSUED: Apr. 22, 2003

REVISIONS:

SHEET NUMBER:

E-1