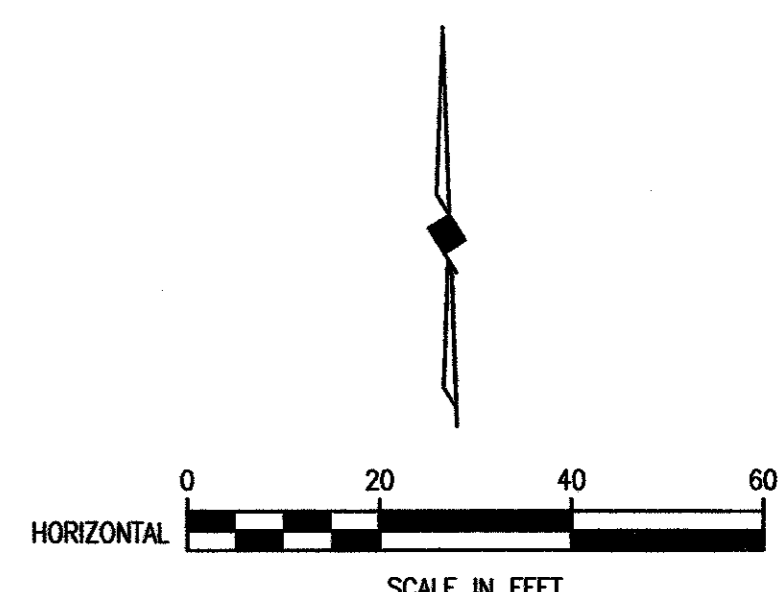
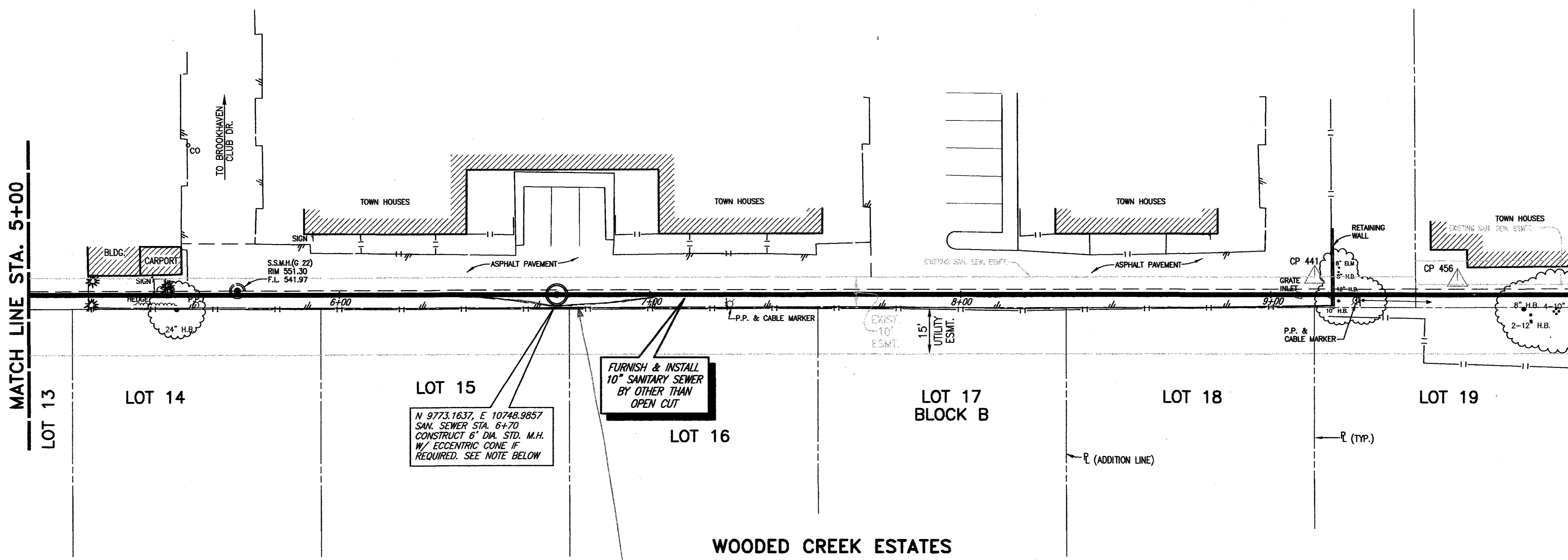


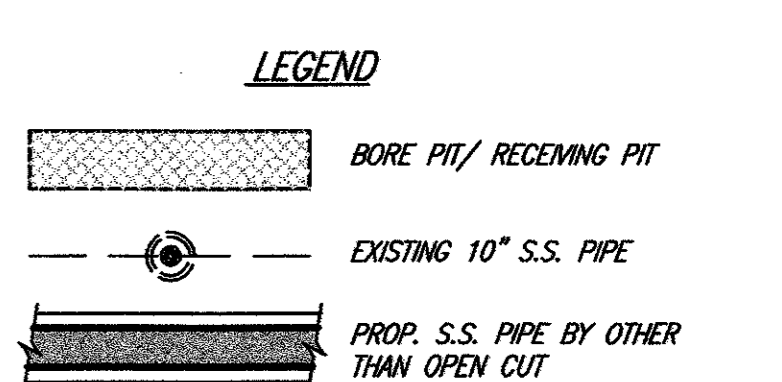
MATCH LINE STA. 5+00

MATCH LINE STA. 10+00



SURVEY CONTROL POINTS

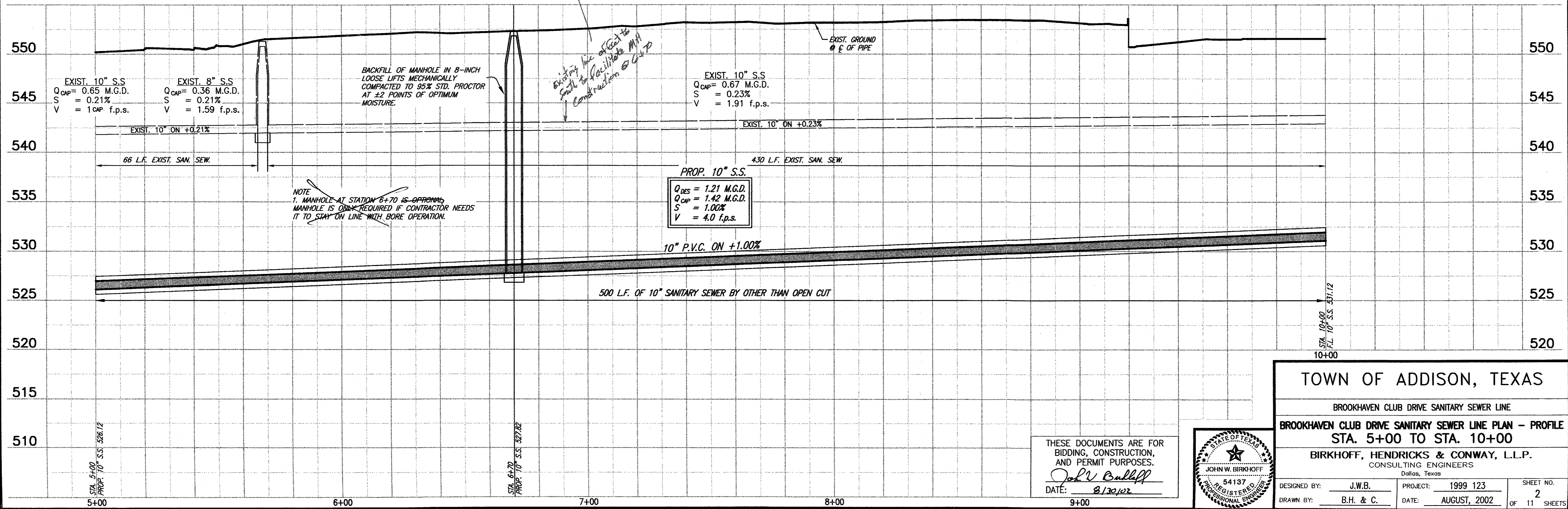
CP 441	60d NAIL	N 9770.2518 E 10993.1554
CP 456	PK NAIL SET	N 9767.7210 E 11039.1426



WOODED CREEK ESTATES

BENCHMARK: TBM 27 "□" CENTER OF INLET LOCATED APPROX. 60' EAST OF NE INTERSECTION OF MARSH LN. & BROOKHAVEN CLUB DRIVE ELEV. 546.91

These plans and related specifications were prepared for construction of this specific project only. Reuse of these documents is not permitted without written authorization of Birkhoff, Hendricks, & Conway, L.L.P.



REVISED 08/30/02 R.L. 99123-07.DWG BLOCKS PROFSZ SCALE: 1"=20'

TOWN OF ADDISON, TEXAS

BROOKHAVEN CLUB DRIVE SANITARY SEWER LINE

BROOKHAVEN CLUB DRIVE SANITARY SEWER LINE PLAN - PROFILE
 STA. 5+00 TO STA. 10+00

BIRKHOFF, HENDRICKS & CONWAY, L.L.P.
 CONSULTING ENGINEERS
 Dallas, Texas

DESIGNED BY: J.W.B.	PROJECT: 1999 123	SHEET NO. 2
DRAWN BY: B.H. & C.	DATE: AUGUST, 2002	OF 11 SHEETS

THESE DOCUMENTS ARE FOR BIDDING, CONSTRUCTION, AND PERMIT PURPOSES.

John W. Birkhoff

DATE: 8/30/02

