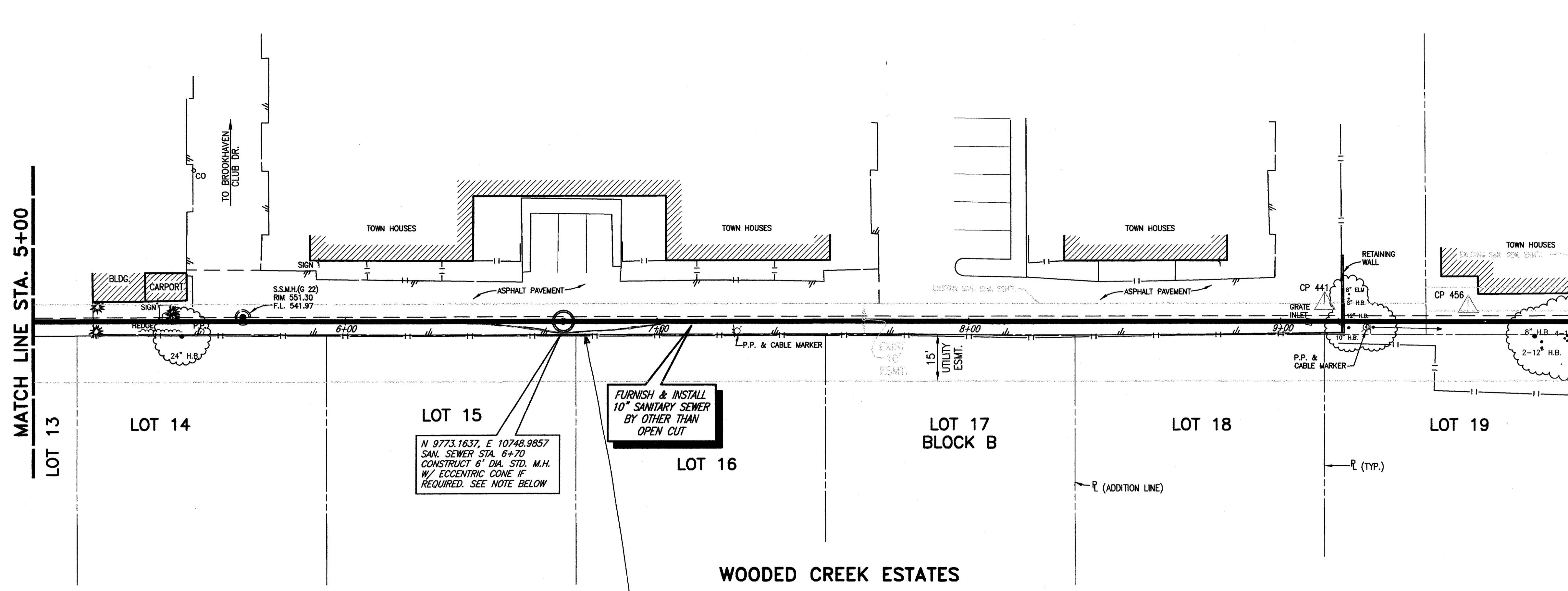
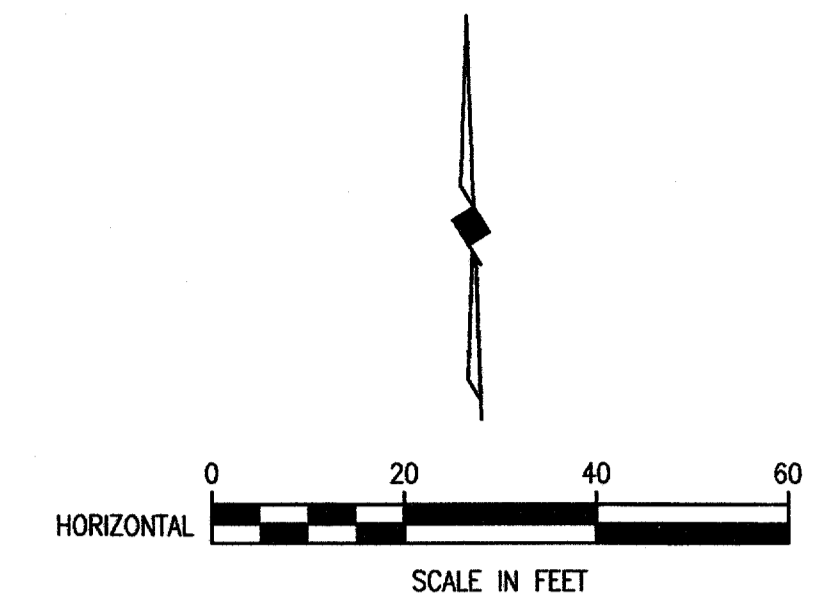


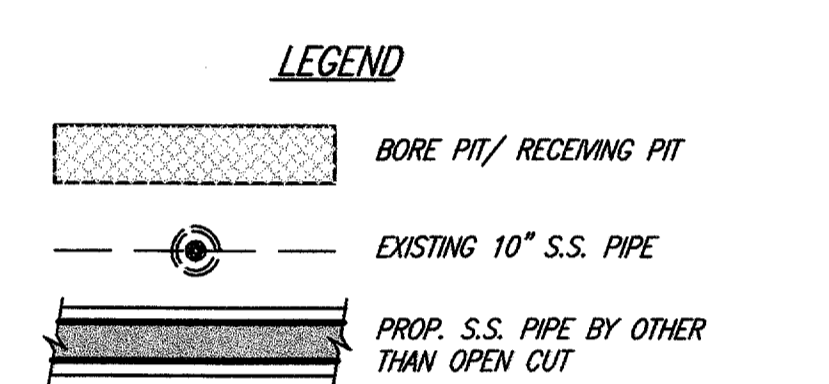
MATCH LINE STA. 5+00

MATCH LINE STA. 10+00



SURVEY CONTROL POINTS

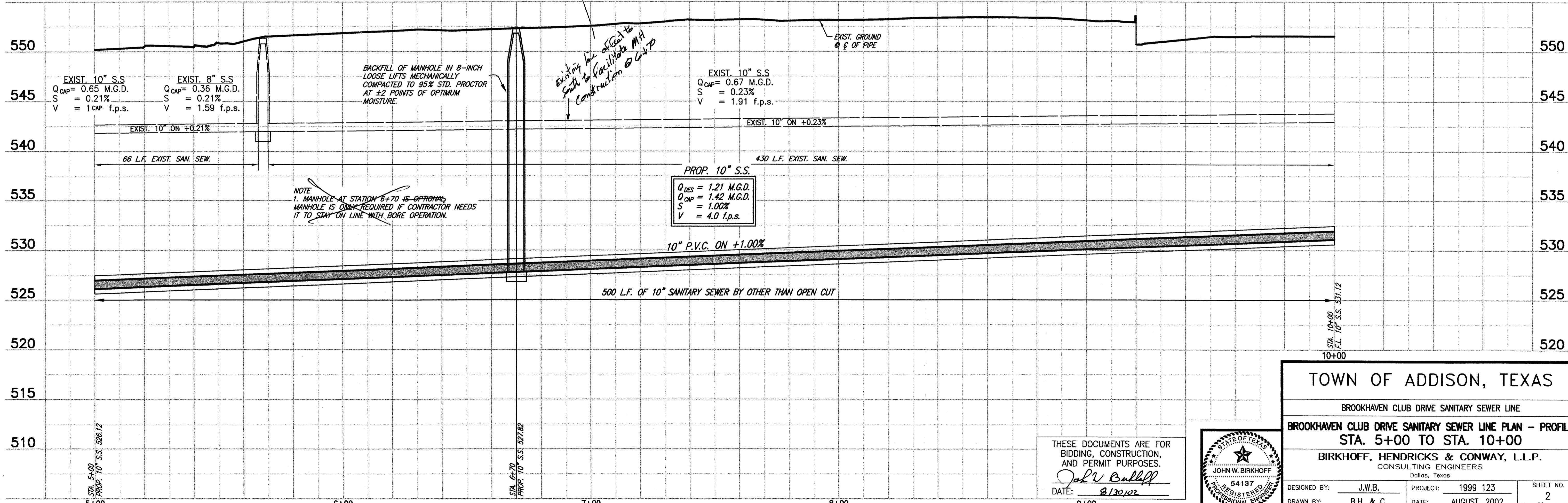
| | | |
|--------|-------------|-----------------------------|
| CP 441 | 60" NAIL | N 9770.2518 E 10993.1554 |
| CP 456 | PK NAIL SET | N 9767.7210 E 11039.1426 |



WOODED CREEK ESTATES

BENCHMARK: TBM 27 "□" CENTER OF INLET LOCATED APPROX. 60' EAST OF NE INTERSECTION OF MARSH LN. & BROOKHAVEN CLUB DRIVE ELEV. 546.91

These plans and related specifications were prepared for construction of this specific project only. Reuse of these documents is not permitted without written authorization of Birkhoff, Hendricks, & Conway, L.L.P.

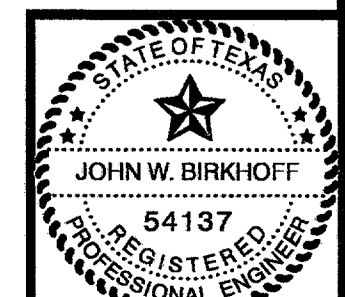


REVISED 08/30/02 R.L. 99125-07.DWG SCALE: 1"=20' BLOCKS PROPOSED

THESE DOCUMENTS ARE FOR BIDDING, CONSTRUCTION, AND PERMIT PURPOSES.

John Bullhoff

DATE: 8/30/02



TOWN OF ADDISON, TEXAS

BROOKHAVEN CLUB DRIVE SANITARY SEWER LINE

BROOKHAVEN CLUB DRIVE SANITARY SEWER LINE PLAN - PROFILE STA. 5+00 TO STA. 10+00

BIRKHOFF, HENDRICKS & CONWAY, L.L.P.

CONSULTING ENGINEERS
Dallas, Texas

| | | |
|---------------------|--------------------|--------------|
| DESIGNED BY: J.W.B. | PROJECT: 1999 123 | SHEET NO. 2 |
| DRAWN BY: B.H. & C. | DATE: AUGUST, 2002 | OF 11 SHEETS |