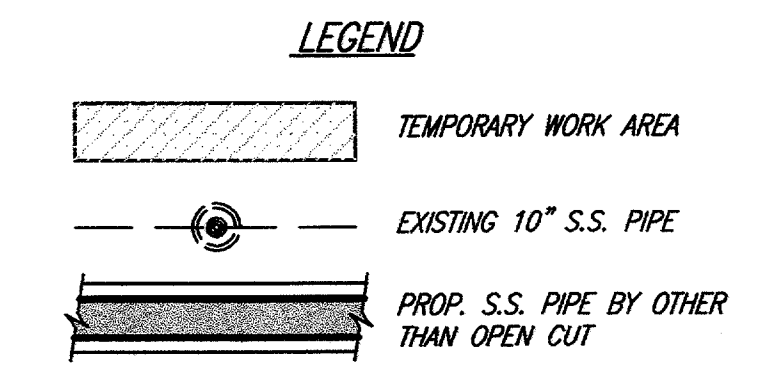


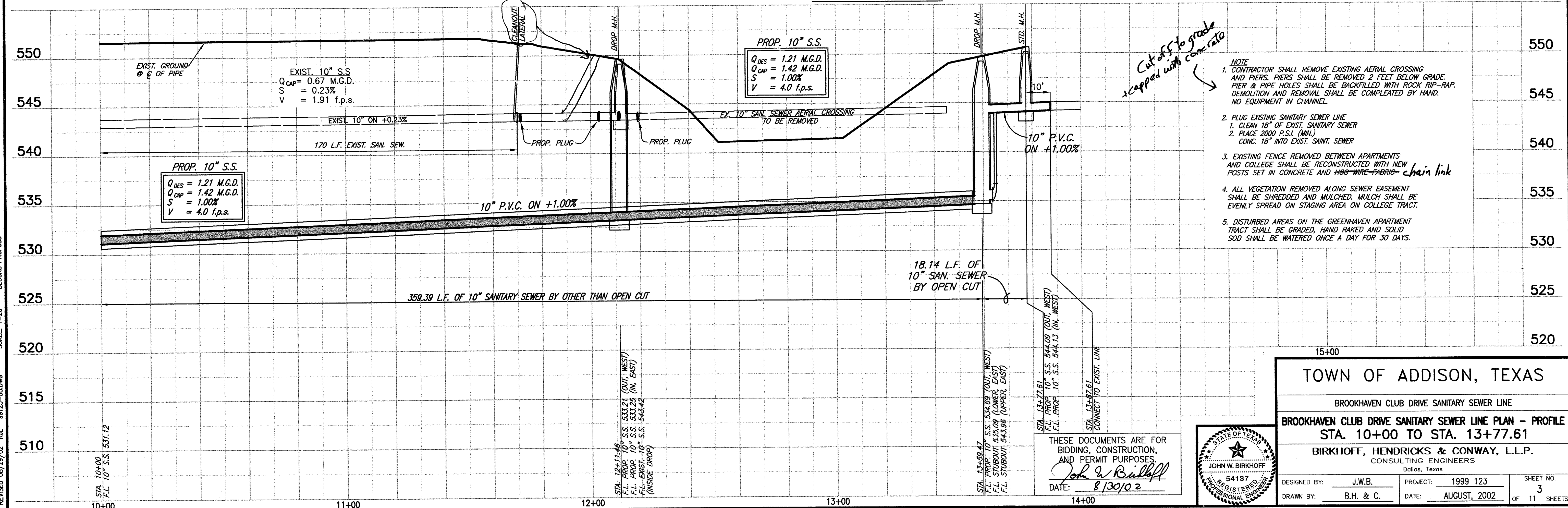
SURVEY CONTROL POINTS

CP 487	60d NAIL	N 9775.8912
		E 11306.7473
CP 494	60d NAIL	N 9763.5044
		E 11236.2683



These plans and related specifications were prepared for construction of this specific project only. Reuse of these documents is not permitted without written authorization of Birkhoff, Hendricks, & Conway, L.L.P.

SECTION A-A



- NOTE**
- CONTRACTOR SHALL REMOVE EXISTING AERIAL CROSSING AND PIERS. PIERS SHALL BE REMOVED 2 FEET BELOW GRADE. PIER & PIPE HOLES SHALL BE BACKFILLED WITH ROCK RIP-RAP. DEMOLITION AND REMOVAL SHALL BE COMPLETED BY HAND. NO EQUIPMENT IN CHANNEL.
 - PLUG EXISTING SANITARY SEWER LINE.
 - CLEAN 18" OF EXIST. SANITARY SEWER
 - PLACE 2000 P.S.I. (MIN.) CONC. 18" INTO EXIST. SANIT. SEWER
 - EXISTING FENCE REMOVED BETWEEN APARTMENTS AND COLLEGE SHALL BE RECONSTRUCTED WITH NEW POSTS SET IN CONCRETE AND ~~HOB-WIRE FABRIC~~ chain link
 - ALL VEGETATION REMOVED ALONG SEWER EASEMENT SHALL BE SHREDDED AND MULCHED. MULCH SHALL BE EVENLY SPREAD ON STAGING AREA ON COLLEGE TRACT.
 - DISTURBED AREAS ON THE GREENHAVEN APARTMENT TRACT SHALL BE GRADED, HAND RAKED AND SOLID SOD SHALL BE WATERED ONCE A DAY FOR 30 DAYS.

TOWN OF ADDISON, TEXAS

BROOKHAVEN CLUB DRIVE SANITARY SEWER LINE

BROOKHAVEN CLUB DRIVE SANITARY SEWER LINE PLAN - PROFILE
 STA. 10+00 TO STA. 13+77.61

BIRKHOFF, HENDRICKS & CONWAY, L.L.P.
 CONSULTING ENGINEERS
 Dallas, Texas

DESIGNED BY: J.W.B.	PROJECT: 1999 123	SHEET NO. 3
DRAWN BY: B.H. & C.	DATE: AUGUST, 2002	OF 11 SHEETS

REVISED 08/29/02, R.L. 99123-08.DWG SCALE: 1"=20' BLOCKS PROFESS

THESE DOCUMENTS ARE FOR BIDDING, CONSTRUCTION, AND PERMIT PURPOSES.

John W. Birkhoff

DATE: 8/30/02

