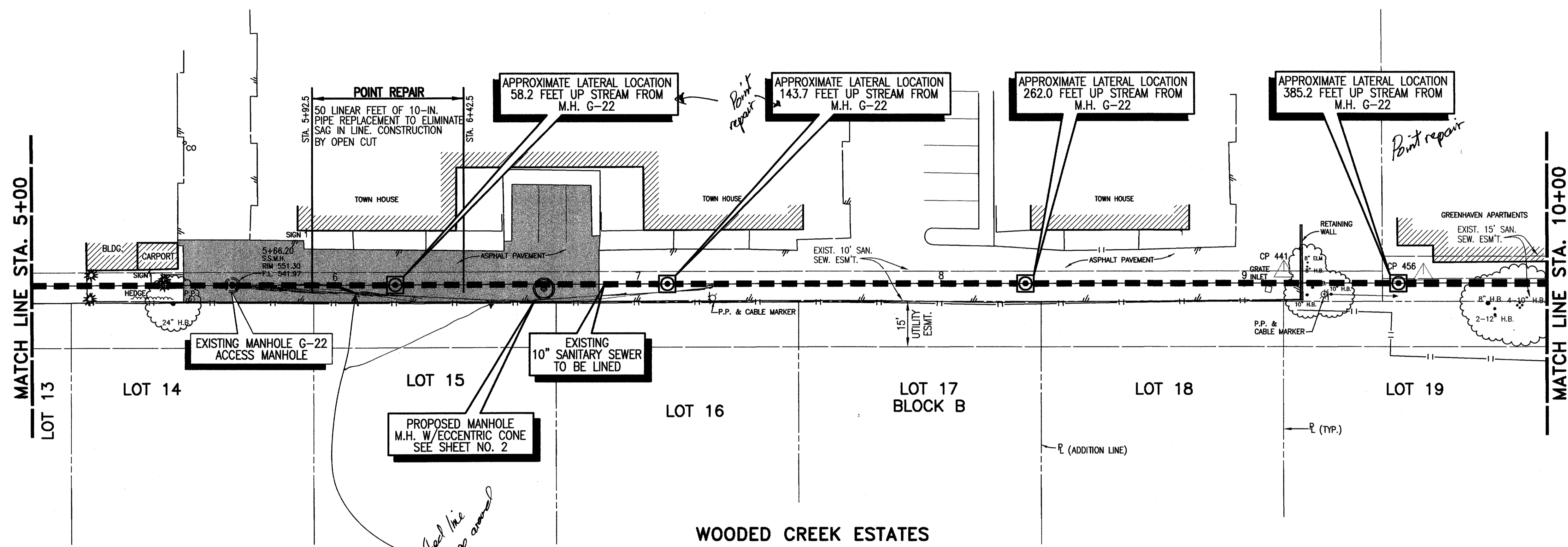


LEGEND

- EXISTING S.S. PIPE TO BE LINED
- APPROXIMATE LOCATION OF LATERAL
- 1-INCH T&DOT TYPE D OVERLAY (345 S.Y.)

SURVEY CONTROL POINTS

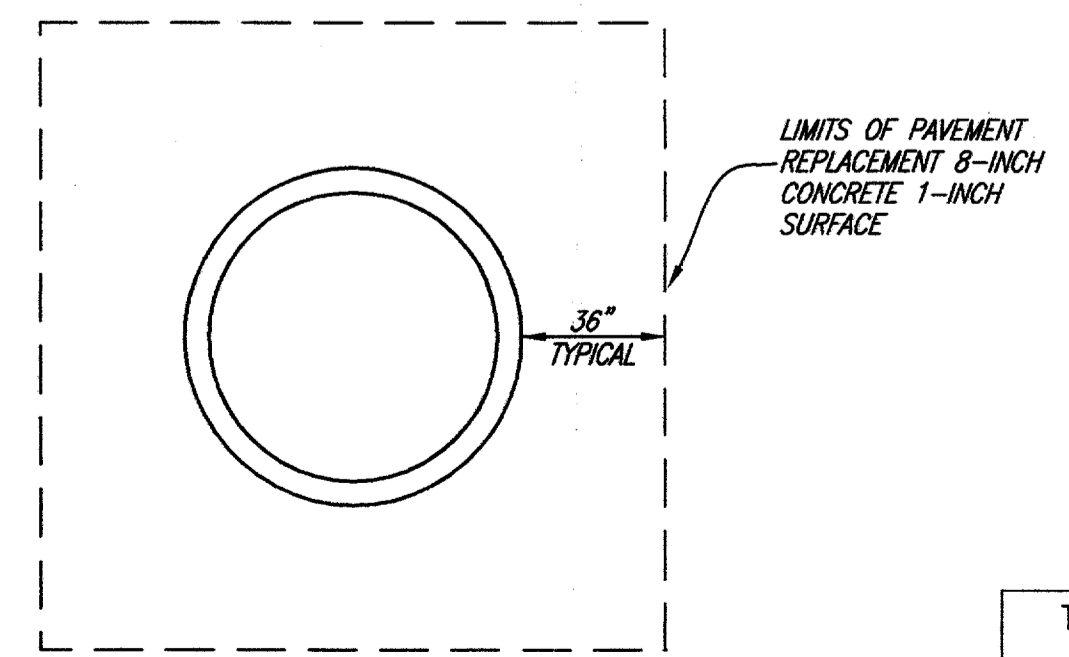
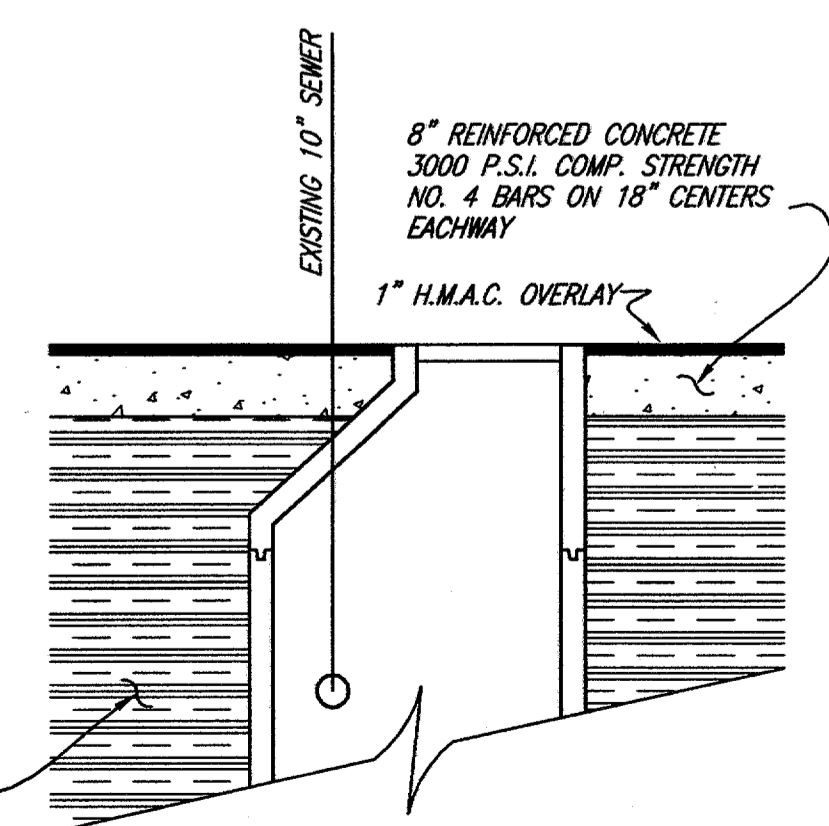
CP 441	60d NAIL	N 9770.2518	E 10993.1554
CP 456	PK NAIL SET	N 9767.7210	E 11039.1426



APPROXIMATE LENGTH TO LATERAL LINES FROM MH G-22 TO MH G-23

58.2 FEET
143.7 FEET
262.0 FEET
385.2 FEET

BACKFILL MANHOLE IN 8-INCH LOOSE LIFTS MECHANICALLY COMPACTED TO 95% STD. PROCTOR ± 2 POINTS OPTIMUM MOISTURE



BENCHMARK: TBM 27 "O" CENTER OF INLET LOCATED APPROX. 80' EAST OF NE INTERSECTION OF MARSH LN. & BROOKHAVEN CLUB DRIVE ELEV. 546.91

These plans and related specifications were prepared for construction of this specific project only. Reuse of these documents is not permitted without written authorization of Birkhoff, Hendricks, & Conway, L.L.P.

TOWN OF ADDISON, TEXAS

BROOKHAVEN CLUB DRIVE SANITARY SEWER LINE

BROOKHAVEN CLUB DRIVE EXISTING SANITARY SEWER LINER PLAN
STA. 5+00 TO STA. 10+00

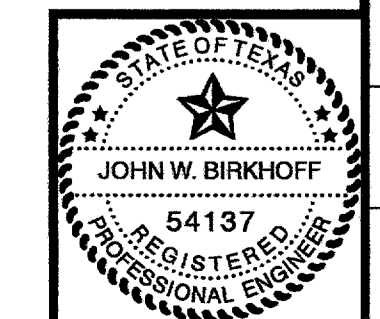
BIRKHOFF, HENDRICKS & CONWAY, L.L.P.
CONSULTING ENGINEERS
Dallas, Texas

DESIGNED BY: J.W.B.	PROJECT: 1999 123	SHEET NO. 6
DRAWN BY: B.H. & C.	DATE: AUGUST, 2001	OF 11 SHEETS

THESE DOCUMENTS ARE FOR BIDDING, CONSTRUCTION, AND PERMIT PURPOSES.

John W. Birkhoff

DATE: 8/30/02



REVISED 08/30/02 B.L. 99123-07-A.DWG SCALE: 1"=20' BLOCKS: