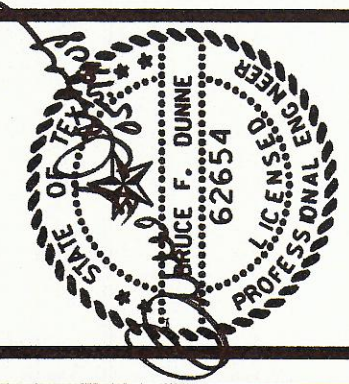


NO	REVISION	DATE

**ICON**  
 Consulting Engineers - Planners  
 250 W. Southlake Blvd., Suite 117  
 Southlake, TX 76082  
 Phone: (817) 552-6210  
 Fax: (817) 552-3126

PHASE TWO  
 DEMOLITION PLANS  
 BROOKHAVEN VILLAGE  
 TOWN OF ADDISON, TX

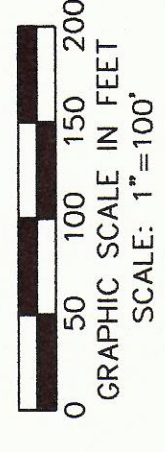
OVERALL  
 DEMOLITION PLAN



Date: 5/19/08  
 Scale: AS SHOWN  
 Drawn By: SAM  
 Reviewed By: JAM  
 Project: 5019-01d

**SHEET C2.0**

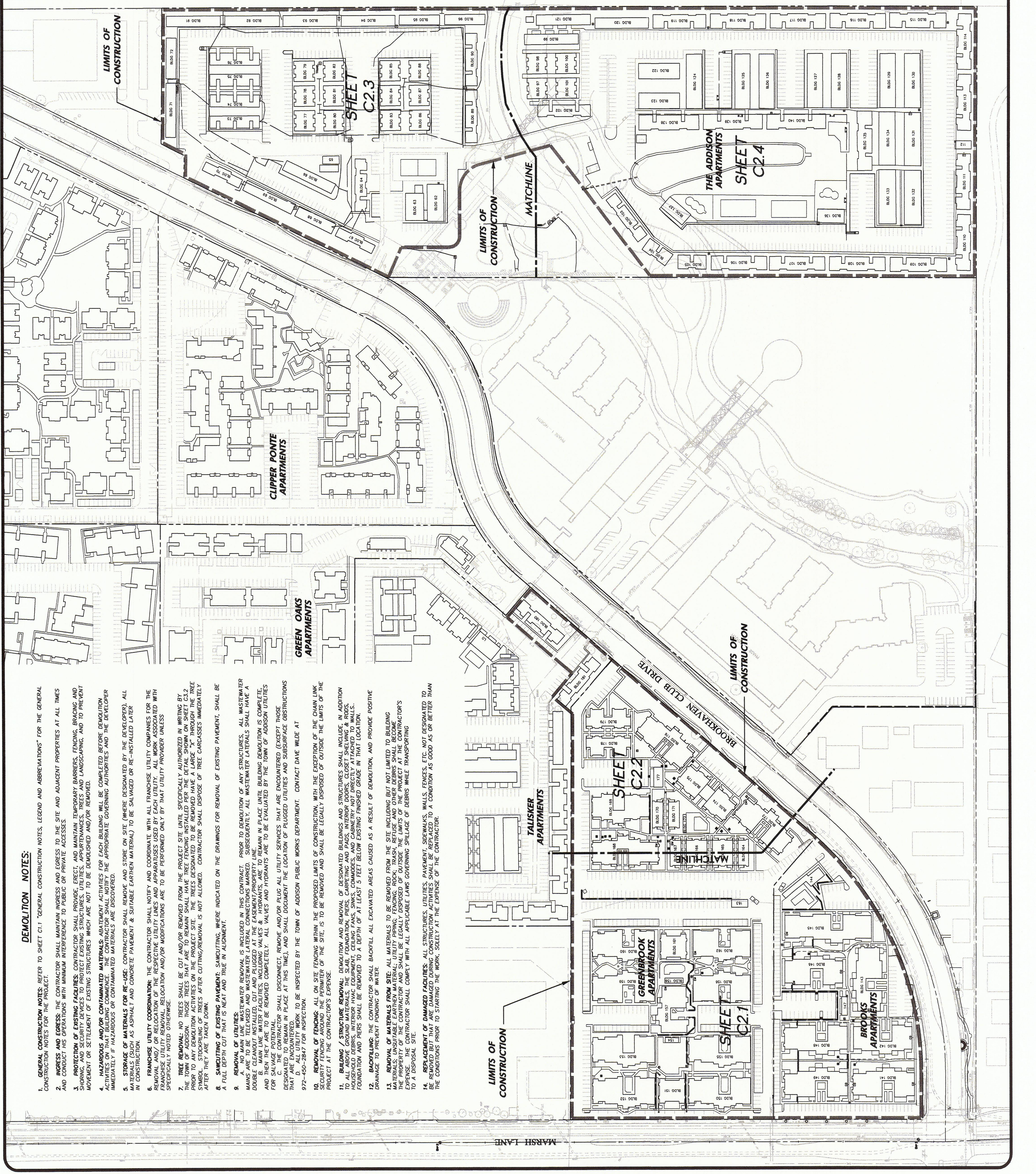
**WARNING**  
 CONTRACTOR IS TO CONTACT TEXAS ONE-CALL TO LOCATE ALL UTILITIES PRIOR TO CONSTRUCTION ACTIVITIES. ICON CONSULTING ENGINEERS SHALL BE RESPONSIBLE FOR VERIFYING THE EXISTING UTILITY LOCATIONS IN THE PROJECT AREA WORK FOR IDENTIFYING THE EXACT LOCATIONS OF UTILITIES ON THESE DRAWINGS.



**PROJECT BENCHMARKS**

**BM #1 REF. ELEVATION = 559.47**  
 7122' NORTH OF BROOKHAVEN CLUB DRIVE.  
**BM #2 REF. ELEVATION = 547.84**  
 SQUARE CUT IN TOP OF CURB, NORTH MEDIAN END NOSE, AT INTERSECTION OF BROOKHAVEN CLUB DRIVE AND MARSH LANE.

— LIMITS OF CONSTRUCTION



- DEMOLITION NOTES:**
- GENERAL CONSTRUCTION NOTES: REFER TO SHEET C1.1 "GENERAL CONSTRUCTION NOTES, LEGEND AND ABBREVIATIONS" FOR THE GENERAL CONSTRUCTION NOTES FOR THE PROJECT.
  - INGRESS AND EGRESS: THE CONTRACTOR SHALL MAINTAIN INGRESS AND EGRESS TO THE SITE AND ADJACENT PROPERTIES AT ALL TIMES AND CONDUCT HIS OPERATIONS WITH MINIMAL INTERFERENCE TO PUBLIC OR PRIVATE ACCESS.
  - PROTECTION OF EXISTING FACILITIES: CONTRACTOR SHALL PROVIDE, ERECT, AND MAINTAIN TEMPORARY BARRIERS, FENCING, BRACING AND SHORING AND SECURITY DEVICES TO PROTECT EXISTING STRUCTURES, UTILITIES, APURTEANCES, TREES AND LANDSCAPING, AND TO PREVENT MOVEMENT OR SETTLEMENT OF EXISTING STRUCTURES WHICH ARE NOT TO BE DEMOLISHED AND/OR REMOVED.
  - HAZARDOUS AND/OR CONTAMINATED MATERIALS: ABATEMENT ACTIVITIES FOR EACH BUILDING WILL BE COMPLETED BEFORE DEMOLITION ACTIVITIES ON THAT BUILDING COMMENCE. THE CONTRACTOR SHALL NOTIFY THE APPROPRIATE GOVERNING AUTHORITIES AND THE DEVELOPER IMMEDIATELY IF HAZARDOUS OR CONTAMINATED MATERIALS ARE DISCOVERED.
  - STORAGE OF MATERIALS FOR RE-USE: CONTRACTOR SHALL REMOVE AND STORE ON SITE (WHERE DESIGNATED BY THE DEVELOPER), ALL MATERIALS (SUCH AS ASPHALT AND CONCRETE PAVEMENT & SUITABLE EARTHEN MATERIAL) TO BE SALVAGED OR RE-INSTALLED LATER IN CONSTRUCTION.
  - FRANCHISE UTILITY COORDINATION: THE CONTRACTOR SHALL NOTIFY AND COORDINATE WITH ALL FRANCHISE UTILITY COMPANIES FOR THE REMOVAL AND/OR RELOCATION OF THE RESPECTIVE UTILITY LINES AND APPARATUS USED BY EACH UTILITY. ALL WORK ASSOCIATED WITH FRANCHISE UTILITY REMOVAL, RELOCATION AND/OR MODIFICATIONS ARE TO BE PERFORMED ONLY BY THAT UTILITY PROVIDER UNLESS SPECIALLY NOTED OTHERWISE.
  - TREE REMOVAL: NO TREES SHALL BE CUT AND/OR REMOVED FROM THE PROJECT SITE UNTIL SPECIFICALLY AUTHORIZED IN WRITING BY THE DEVELOPER. THE CONTRACTOR SHALL NOTIFY THE DEVELOPER IMMEDIATELY IN WRITING OF ANY TREE THAT MAY BE AT RISK OF REMOVAL. PRIOR TO ANY DEMOLITION ACTIVITIES ON THE PROJECT SITE, THE TREES DESIGNATED TO BE REMOVED HAVE A LARGE "X" THROUGH THE TREE SYMBOL. STOCKPILING OF TREES AFTER CUTTING/REMOVAL IS NOT ALLOWED. CONTRACTOR SHALL DISPOSE OF TREE CARCASSES IMMEDIATELY AFTER THEY ARE TAKEN DOWN.
  - SAWCUTTING OF EXISTING PAVEMENT: SAWCUTTING, WHERE INDICATED ON THE DRAWINGS FOR REMOVAL OF EXISTING PAVEMENT, SHALL BE A FULL DEPTH CUT THAT IS NEAT AND TRUE IN ALIGNMENT.
  - REMOVAL OF UTILITIES:
    - NO MAIN LINE WASTEWATER REMOVAL IS INCLUDED IN THIS CONTRACT. PRIOR TO DEMOLITION OF ANY STRUCTURES, ALL WASTEWATER MAINS ARE TO BE TELEVIEWED AND WASTEWATER LATERAL CONNECTIONS MARKED. SUBSEQUENTLY, ALL WASTEWATER LATERALS SHALL HAVE A DOUBLE "X" THROUGH THEM.
    - MAIN LINE WATER FACILITIES, INCLUDING VALVES & HYDRANTS, ARE TO REMAIN IN PLACE UNTIL BUILDING DEMOLITION IS COMPLETE, AND THEN THEY ARE TO BE REMOVED COMPLETELY. ALL VALVES AND HYDRANTS ARE TO BE EVALUATED BY THE TOWN OF ADDISON UTILITIES FOR SALVAGE POTENTIAL.
    - ALL GAS PIPING SHALL BE DISCONNECTED, REMOVED AND/OR PLUG ALL UTILITY SERVICES THAT ARE ENCOUNTERED (EXCEPT THOSE DESIGNATED TO REMAIN IN PLACE AT THIS TIME), AND SHALL DOCUMENT THE LOCATION OF PLUGGED UTILITIES AND SUBSURFACE OBSTRUCTIONS THAT ARE ENCOUNTERED.
  - INSPECTION: WORK TO BE INSPECTED BY THE TOWN OF ADDISON PUBLIC WORKS DEPARTMENT. CONTACT DAVE WILDE AT 972-436-2847 FOR INSPECTION.
  - REMOVAL OF FENCING: ALL ON SITE FENCING WITHIN THE PROPOSED LIMITS OF CONSTRUCTION, WITH THE EXCEPTION OF THE CHAIN LINK FENCING, SHALL BE REMOVED. FENCING OF THE SITE, IS TO BE LEGALLY DISPOSED OF OUTSIDE THE LIMITS OF THE PROJECT AT THE CONTRACTOR'S EXPENSE.
  - BUILDING STRUCTURE REMOVAL: DEMOLITION AND REMOVAL OF DESIGNATED BUILDINGS AND STRUCTURES SHALL INCLUDE, IN ADDITION TO HOUSEHOLD DEBRIS, INTERIOR HVAC EQUIPMENT, CEILING FANS, SINKS, COUNTERS, AND CABINETS, NOT DIRECTLY ATTACHED TO WALLS, FOUNDATION AND PIERS SHALL BE REMOVED TO A DEPTH OF AT LEAST 5 FEET BELOW EXISTING FINISHED GRADE IN THAT LOCATION.
  - BACKFILLING: THE CONTRACTOR SHALL BACKFILL ALL EXCAVATED AREAS CAUSED AS A RESULT OF DEMOLITION, AND PROVIDE POSITIVE DRAINAGE TO PREVENT PONDING OF WATER.
  - REMOVAL OF MATERIALS FROM SITE: ALL MATERIALS TO BE REMOVED FROM THE SITE INCLUDING BUT NOT LIMITED TO BUILDING MATERIALS; UNSUITABLE EARTHEN MATERIAL, UTILITY PIPING, FENCING, ROCK, TRASH, REFUSE AND OTHER DEBRIS SHALL BECOME THE PROPERTY OF THE CONTRACTOR AND SHALL BE LEGALLY DISPOSED OF OUTSIDE THE PROJECT AREA AT THE CONTRACTOR'S EXPENSE TO A DISPOSAL SITE.
  - REPAIR/REPLACE OF DAMAGED FACILITIES: ALL STRUCTURES, UTILITIES, PAVEMENT, SIDEWALKS, WALLS, FENCES, ETC. NOT DESIGNATED TO BE REMOVED BUT THAT ARE DAMAGED DURING CONSTRUCTION ACTIVITIES SHALL BE REPLACED TO A CONDITION AS GOOD AS OR BETTER THAN THE CONDITIONS PRIOR TO STARTING THE WORK, SOLELY AT THE EXPENSE OF THE CONTRACTOR.