

NO.	REVISION	BY	DATE

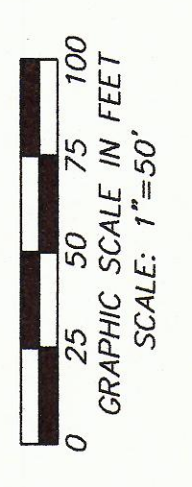
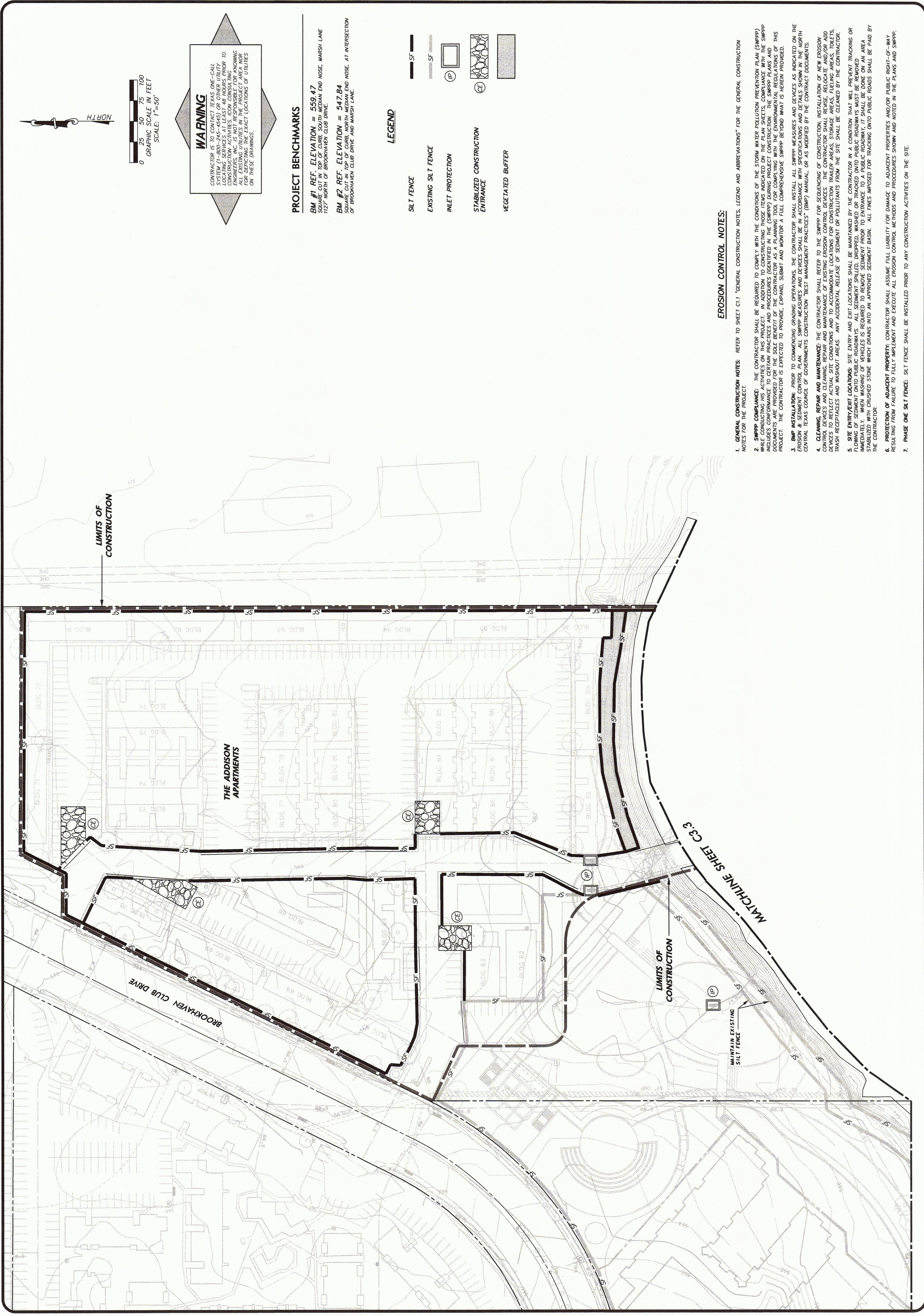
icon
 Consulting Engineers, Inc.
 Biomedical Financial Center
 250 W. Southlake Blvd., Suite 117
 Southlake, TX 76092
 Phone: (817) 552-6210
 Fax: (817) 552-3128

EROSION & SEDIMENT CONTROL PLAN - "THE ADDISON" (NORTH)
 TOWN OF ADDISON, TX

**PHASE TWO
 DEMOLITION PLANS
 BROOKHAVEN VILLAGE
 TOWN OF ADDISON, TX**



Date: 5/19/08
 Scale: AS SHOWN
 Drawn By: SAM
 Reviewed By: JAM
 Project: 5019-01d
**SHEET
 C3.2**



WARNING
 CONTRACTOR TO VERIFY EXISTING ONE-CALL SYSTEM (888-486-4545) OR OTHER UTILITY LOCATING SERVICES AT LEAST 48 HOURS PRIOR TO CONSTRUCTION ACTIVITIES. ICON CONSULTING ENGINEERS, INC. SHALL NOT BE RESPONSIBLE FOR MISSING OR ALL EXISTING UTILITIES IN THE PROJECT AREA NOR FOR DEPICTING THE EXACT LOCATIONS OF UTILITIES ON THESE DRAWINGS.

PROJECT BENCHMARKS

BM #1 REF. ELEVATION = 559.47
 SQUARE CUT IN TOP OF CURB SOUTH MEDIAN END NOSE, MARSH LANE
 1127' NORTH OF BROOKHAVEN CLUB DRIVE

BM #2 REF. ELEVATION = 547.84
 SQUARE CUT IN TOP OF CURB NORTH MEDIAN END NOSE, AT INTERSECTION OF BROOKHAVEN CLUB DRIVE AND MARSH LANE.

LEGEND

- SILT FENCE
- EXISTING SILT FENCE
- INLET PROTECTION
- STABILIZED CONSTRUCTION ENTRANCE
- VEGETATED BUFFER

EROSION CONTROL NOTES:

1. **GENERAL CONSTRUCTION NOTES:** REFER TO SHEET C1.1 "GENERAL CONSTRUCTION NOTES, LEGEND AND ABBREVIATIONS" FOR THE GENERAL CONSTRUCTION NOTES FOR THE PROJECT.
2. **SWPPP COMPLIANCE:** THE CONTRACTOR SHALL BE REQUIRED TO COMPLY WITH THE CONDITIONS OF THE STORM WATER POLLUTION PREVENTION PLAN (SWPPP) AND THE SWPPP SHALL BE MAINTAINED THROUGHOUT THE CONSTRUCTION PERIOD. THE SWPPP SHALL BE REVIEWED AND APPROVED BY THE TOWN OF ADDISON. THE SWPPP SHALL INCLUDE CONFORMANCE TO CERTAIN PRACTICES AND PROCEDURES (DETAILED IN THE SWPPP) DURING PROJECT CONSTRUCTION. THE SWPPP PLANS AND DOCUMENTS ARE PROVIDED FOR THE SOLE BENEFIT OF THE CONTRACTOR AS A PLANNING TOOL FOR COMPLYING WITH THE ENVIRONMENTAL REGULATIONS OF THIS PROJECT. THE CONTRACTOR IS EXPECTED TO PROVIDE, EXPAND, SUBMIT AND MONITOR A FULL COMPREHENSIVE SWPPP BEYOND WHAT IS HEREIN PROVIDED.
3. **BMP INSTALLATION:** PRIOR TO COMMENCING GRADING OPERATIONS, THE CONTRACTOR SHALL INSTALL ALL SWPPP MEASURES AND DEVICES AS INDICATED ON THE EROSION & SEDIMENT CONTROL PLAN. ALL SWPPP MEASURES AND DEVICES SHALL BE IN ACCORDANCE WITH SPECIFICATIONS AND DETAILS SHOWN IN THE NORTH CENTRAL TEXAS COUNCIL OF GOVERNMENTS CONSTRUCTION "BEST MANAGEMENT PRACTICES" (BMP) MANUAL, OR AS MODIFIED BY THE CONTRACT DOCUMENTS.
4. **CLEANING, REPAIR AND MAINTENANCE:** THE CONTRACTOR SHALL BE RESPONSIBLE FOR MAINTAINING ALL SWPPP MEASURES AND DEVICES THROUGHOUT THE CONSTRUCTION PERIOD. THE CONTRACTOR SHALL BE RESPONSIBLE FOR THE CLEANING, REPAIR AND MAINTENANCE OF EXISTING EROSION CONTROL DEVICES. THE CONTRACTOR SHALL BE RESPONSIBLE FOR THE INSTALLATION OF NEW EROSION CONTROL DEVICES AND TO ACCOMMODATE LOCATIONS FOR CONSTRUCTION TRAILER AREAS, STORAGE AREAS, FUELING AREAS, TOILETS, TRASH RECEIPTABLES AND WASHOUT AREAS. ANY ACCIDENTAL RELEASE OF SEDIMENT OR POLLUTANTS FROM THE SITE SHALL BE CLEANED BY THE CONTRACTOR.
5. **SITE ENTRY/EXIT LOCATIONS:** SITE ENTRY AND EXIT LOCATIONS SHALL BE MAINTAINED BY THE CONTRACTOR IN A CONDITION THAT WILL PREVENT TRACKING OR FLOWING OF SEDIMENT ONTO PUBLIC ROADWAYS. ALL SEDIMENT SPILLED, DROPPED, WASHED OR TRACKED ONTO PUBLIC ROADWAYS MUST BE REMOVED IMMEDIATELY. WHEN WASHING OF VEHICLES IS REQUIRED TO REMOVE SEDIMENT PRIOR TO ENTRANCE TO A PUBLIC ROADWAY, IT SHALL BE DONE ON AN AREA STABILIZED WITH CRUSHED STONE WHICH DRAINS INTO AN APPROVED SEDIMENT BASIN. ALL FINES IMPOSED FOR TRACKING ONTO PUBLIC ROADS SHALL BE PAID BY THE CONTRACTOR.
6. **PROTECTION OF ADJACENT PROPERTY:** CONTRACTOR SHALL ASSUME FULL LIABILITY FOR DAMAGE TO ADJACENT PROPERTIES AND/OR PUBLIC RIGHT-OF-WAY RESULTING FROM FAILURE TO FULLY IMPLEMENT AND EXECUTE ALL EROSION CONTROL METHODS AND PROCEDURES SHOWN AND NOTED IN THE PLANS AND SWPPP.
7. **PHASE ONE SILT FENCE:** SILT FENCE SHALL BE INSTALLED PRIOR TO ANY CONSTRUCTION ACTIVITIES ON THE SITE.