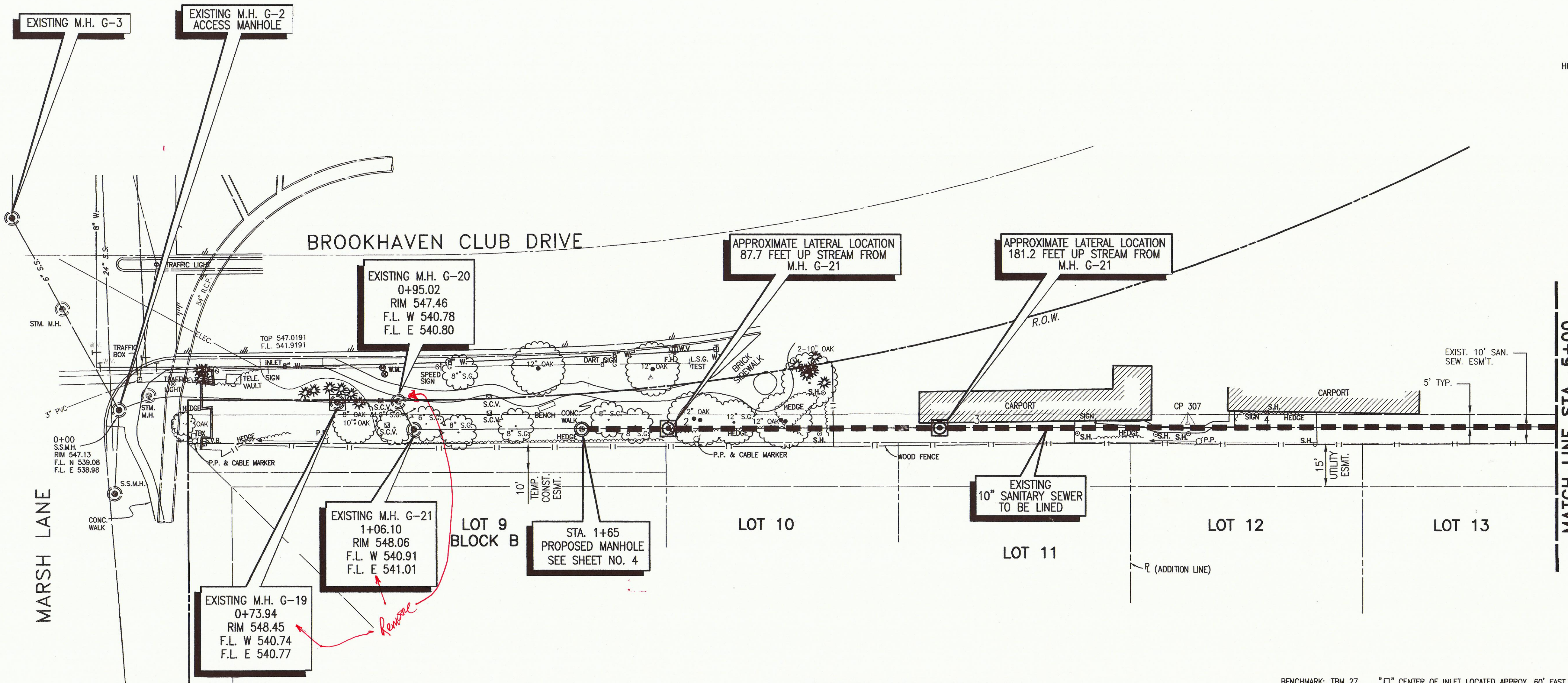
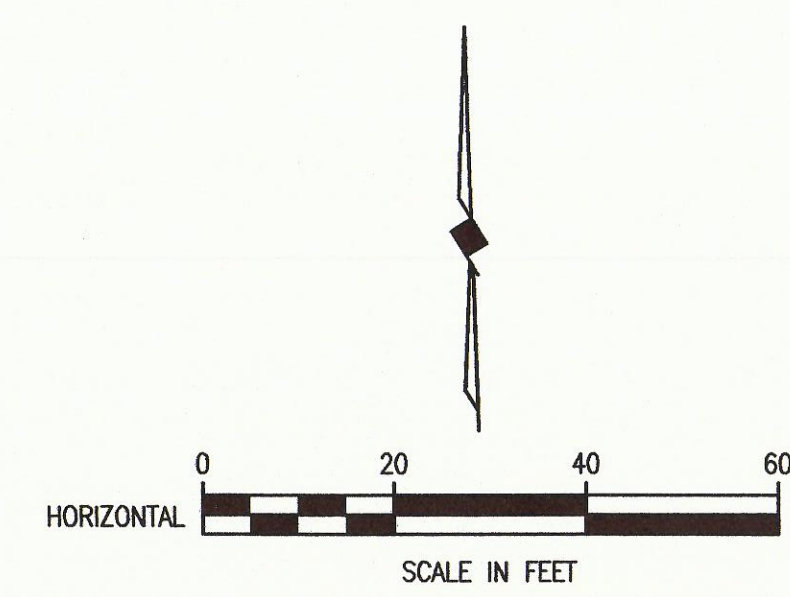


REVISED 08/30/02 R.I.L. 98723-06-A.DWG SCALE: 1"=20' BLOCKS PROFESSIONAL



LEGEND

--- EXISTING S.S. PIPE TO BE LINED

□ APPROXIMATE LOCATION OF LATERAL

SURVEY CONTROL POINTS

CP 249 PK NAIL SET N 9840.0925
E 10436.0578

CP 307 PK NAIL SET N 9785.8671
E 10453.0317

APPROXIMATE LENGTH TO LATERAL LINES FROM MH G-21 TO MH G-22
87.7 FEET
181.2 FEET

WOODED CREEK ESTATES

BENCHMARK: TBM 27 "□" CENTER OF INLET LOCATED APPROX. 60' EAST OF NE INTERSECTION OF MARSH LN. & BROOKHAVEN CLUB DRIVE ELEV. 546.91

TOWN OF ADDISON, TEXAS

BROOKHAVEN CLUB DRIVE SANITARY SEWER LINE

BROOKHAVEN CLUB DRIVE EXISTING SANITARY SEWER LINER PLAN
STA. 0+00 TO STA. 5+00

BIRKHOFF, HENDRICKS & CONWAY, L.L.P.
CONSULTING ENGINEERS
Dallas, Texas

DESIGNED BY: J.W.B.	PROJECT: 1999 123	SHEET NO. 5
DRAWN BY: B.H. & C.	DATE: AUGUST, 2001	OF 11 SHEETS

THESE DOCUMENTS ARE FOR BIDDING, CONSTRUCTION, AND PERMIT PURPOSES.
John W. Birkhoff
DATE: 8/30/02



These plans and related specifications were prepared for construction of this specific project only. Reuse of these documents is not permitted without written authorization of Birkhoff, Hendricks, & Conway, L.L.P.