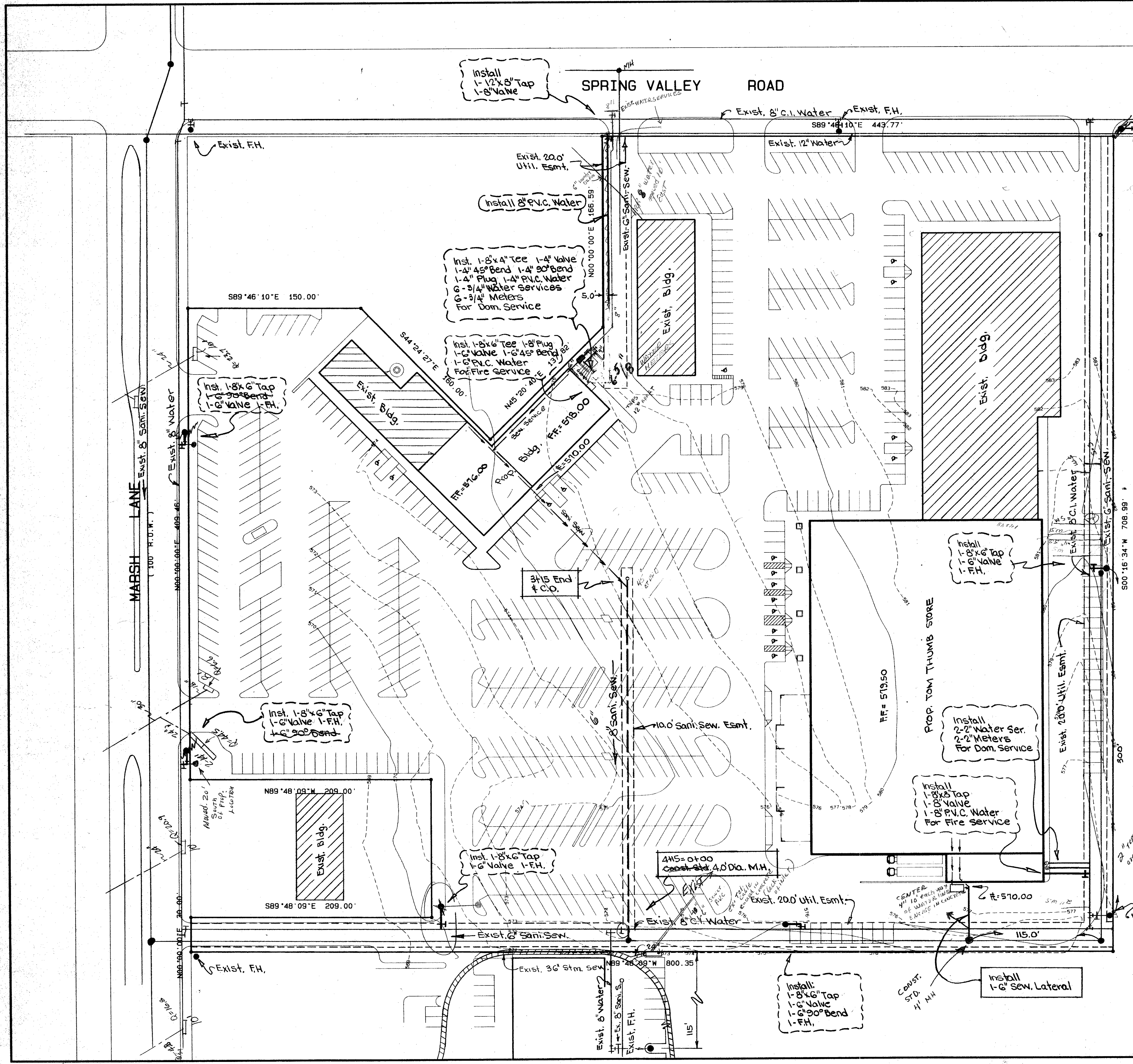


USE RESTRAINT TYPE FLANGES ON ALL HYDRANTS LOWERED EXIST. S.M.H.
 LOCATE EXIST. 4" SANI. LATERALS CUT INSTALL 4" RUBBER CAP, CONCRETE.

2" PIPES ARE 1.5" DIA. PAV. & VALVE

WATER AND SANITARY SEWER MAINS
BROOKHAVEN VILLAGE SHOPPING CENTER

NOAH GOOD SURVEY, ABSTRACT NO. 520
 DALLAS COUNTY, TEXAS
 ADDISON, TEXAS
 FERGUSON-DEERE, INC. * ENGINEERS
 9817 KINGSLEY ROAD - DALLAS, TEXAS 75238
 JUNE, 1998 - SCALE: 1"=40'



Install 1-1/2"x8" Tap 1-8" Valve

Install 1-8"x6" Tap 1-6" Valve 1-F.H.

Inst. 1-8"x4" Tee 1-4" Valve 1-4" 45° Bend 1-4" 90° Bend 1-4" Plug 1-4" P.V.C. Water 6-3/4" Water Services For Dom. Service

Inst. 1-8"x6" Tee 1-8" Plug 1-6" Valve 1-6" 45° Bend 1-6" P.V.C. Water For Fire Service

Inst. 1-8"x6" Tap 1-6" Valve 1-F.H. 1-6" 90° Bend

Inst. 1-8"x6" Tap 1-6" Valve 1-F.H.

Install 1-8"x8" Tap 1-8" Valve 1-8" P.V.C. Water For Fire Service

Install 2-2" Water Ser. 2-2" Meters For Dom. Service

Install 1-8"x6" Tap 1-6" Valve 1-6" 90° Bend 1-F.H.

Install 1-6" Sew. Lateral

589'46"10"E 150.00'

N89'48'09"W 209.00'

S89'48'09"E 209.00'

SPRING VALLEY ROAD

MARCH LANE

PROP. TOM THUMB STORE

EXIST. Bldg.

EXIST. Bldg.

EXIST. Bldg.

EXIST. Bldg.

315 End # C.O.

4HS=0+00 CONST. 4.0 DIA. M.H.

10.0' Sani. Sew. Esmt.

EXIST. 20.0' UTIL. ESMT.

EXIST. 20.0' UTIL. ESMT.

EXIST. F.H.

EXIST. 20.0' UTIL. ESMT.

EXIST. 8" C.I. WATER

EXIST. 12" WATER

EXIST. 8" C.I. WATER

EXIST. 8" SANI. SEW.

EXIST. 8" WATER

EXIST. 8" SANI. SEW.

EXIST. F.H.

EXIST. F.H.

EXIST. 36" STR. SEW.

EXIST. 8" WATER

EXIST. 8" SANI. SEW.

EXIST. F.H.

CONST. STD. 4" M.H.

500'16"34"W 708.99'

300'

115.0'

EXIST. F.H.

FF=519.50

FF=518.00

FF=510.00

FF=516.00

FF=510.00

FF=510.00

FF=510.00

FF=510.00

FF=510.00

FF=510.00

FF=510.00

FF=510.00

FF=510.00

FF=510.00

FF=510.00

FF=510.00

FF=510.00

FF=510.00

FF=510.00

FF=510.00

FF=510.00

FF=510.00

FF=510.00

FF=510.00

FF=510.00

FF=510.00

FF=510.00

FF=510.00

FF=510.00

FF=510.00

FF=510.00

FF=510.00