

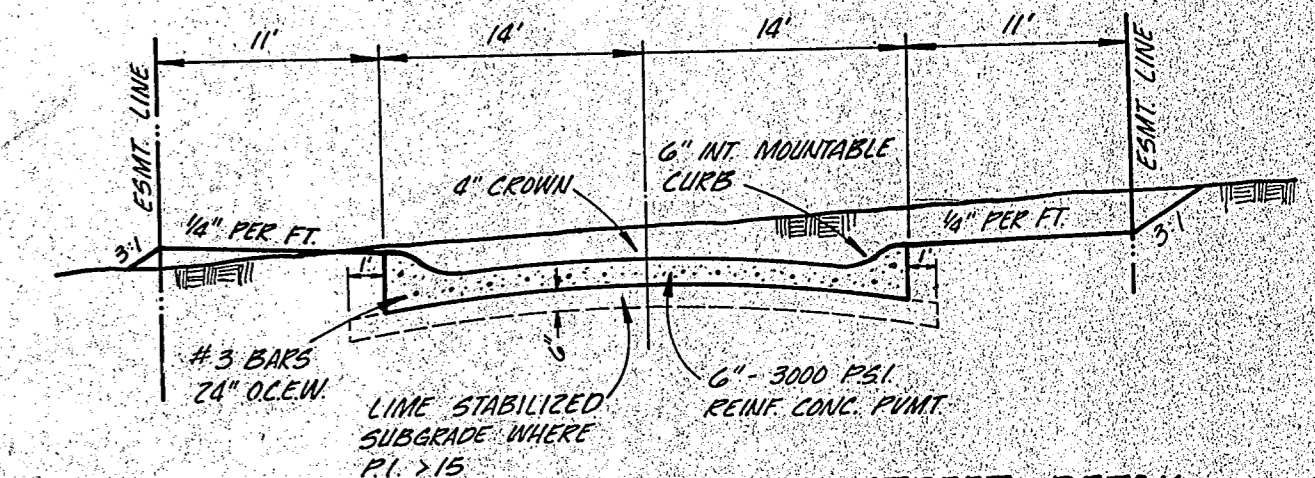
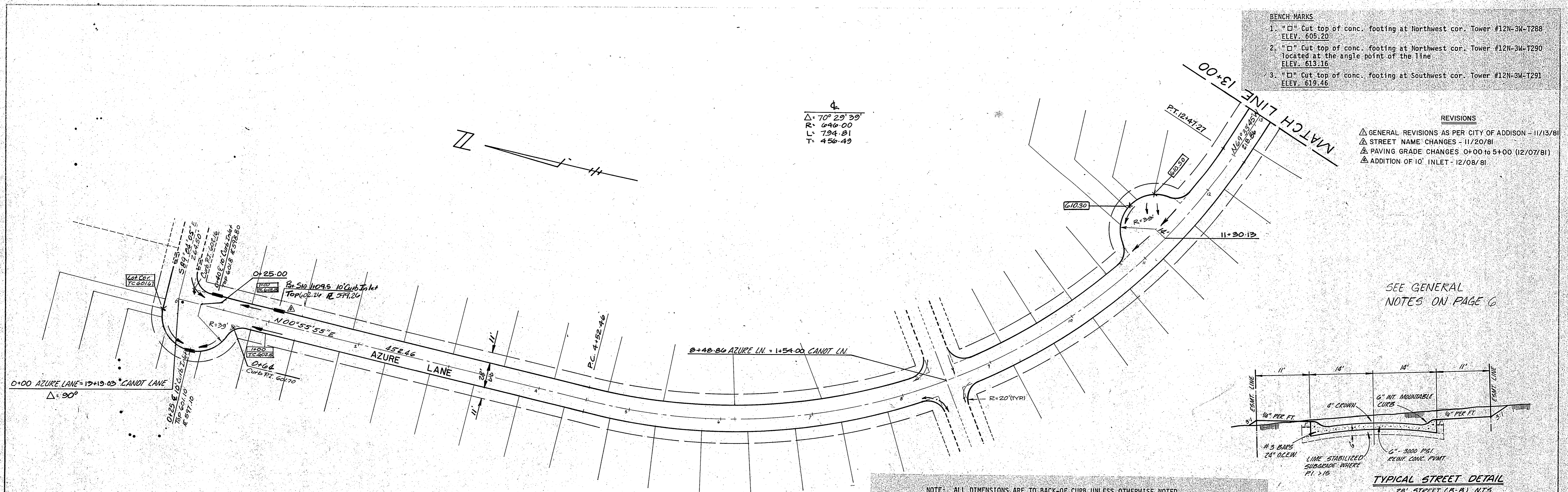
- BENCH-MARKS**
1. "□" Cut top of conc. footing at Northwest cor. Tower #12N-3W-T288
ELEV. 605.20
 2. "□" Cut top of conc. footing at Northwest cor. Tower #12N-3W-T290
located at the angle point of the line
ELEV. 613.16
 3. "□" Cut top of conc. footing at Southwest cor. Tower #12N-3W-T291
ELEV. 619.46

- REVISIONS**
- △ GENERAL REVISIONS AS PER CITY OF ADDISON - 11/13/81
 - △ STREET NAME CHANGES - 11/20/81
 - △ PAVING GRADE CHANGES 0+00 to 5+00 (12/07/81)
 - △ ADDITION OF 10' INLET - 12/08/81

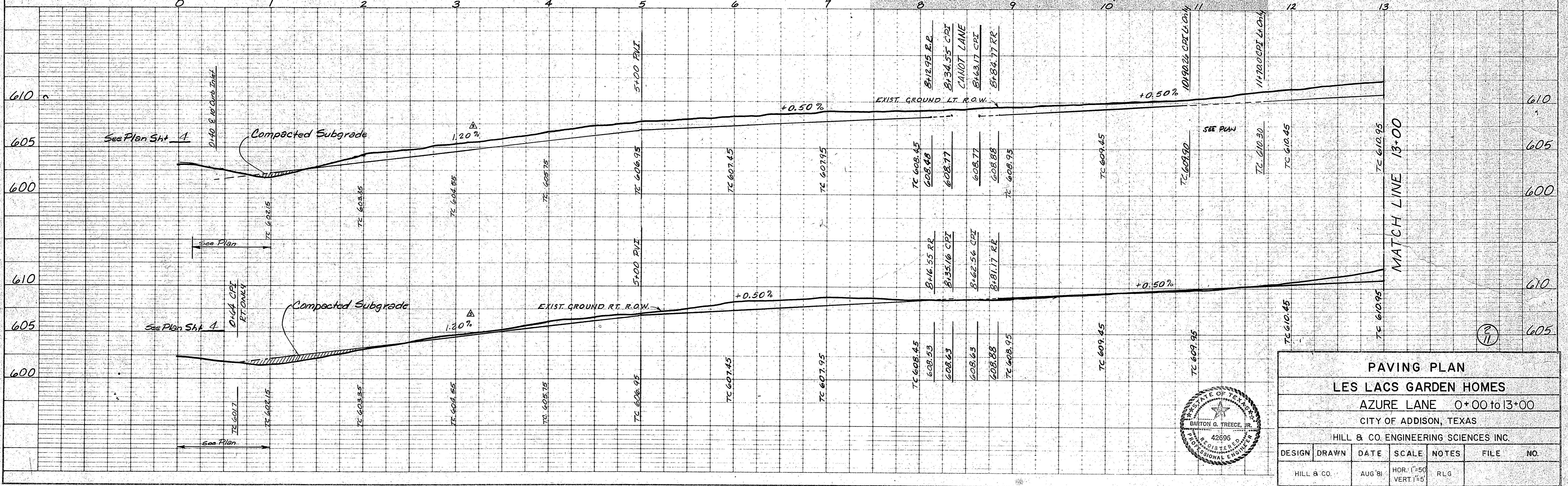
$\Delta = 70^\circ 29' 39''$
 $R = 646.00$
 $L = 794.81$
 $T = 456.49$

PLAN

DATE	
BY	
REVISION	
NOTED	
NOTE BOOK	
NO.	

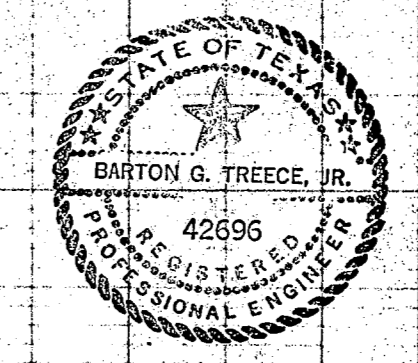


NOTE: ALL DIMENSIONS ARE TO BACK-OF CURB UNLESS OTHERWISE NOTED.



PROFILE

DATE	
BY	
REVISION	
NOTED	
NOTE BOOK	
NO.	



PAVING PLAN					
LES LACS GARDEN HOMES					
AZURE LANE 0+00 to 13+00					
CITY OF ADDISON, TEXAS					
HILL & CO. ENGINEERING SCIENCES INC.					
DESIGN	DRAWN	DATE	SCALE	NOTES	FILE NO.
HILL & CO.		AUG 81	HOR. 1"=50' VERT. 1"=5'	RLG	

STREET A A 0+00 - 13+00