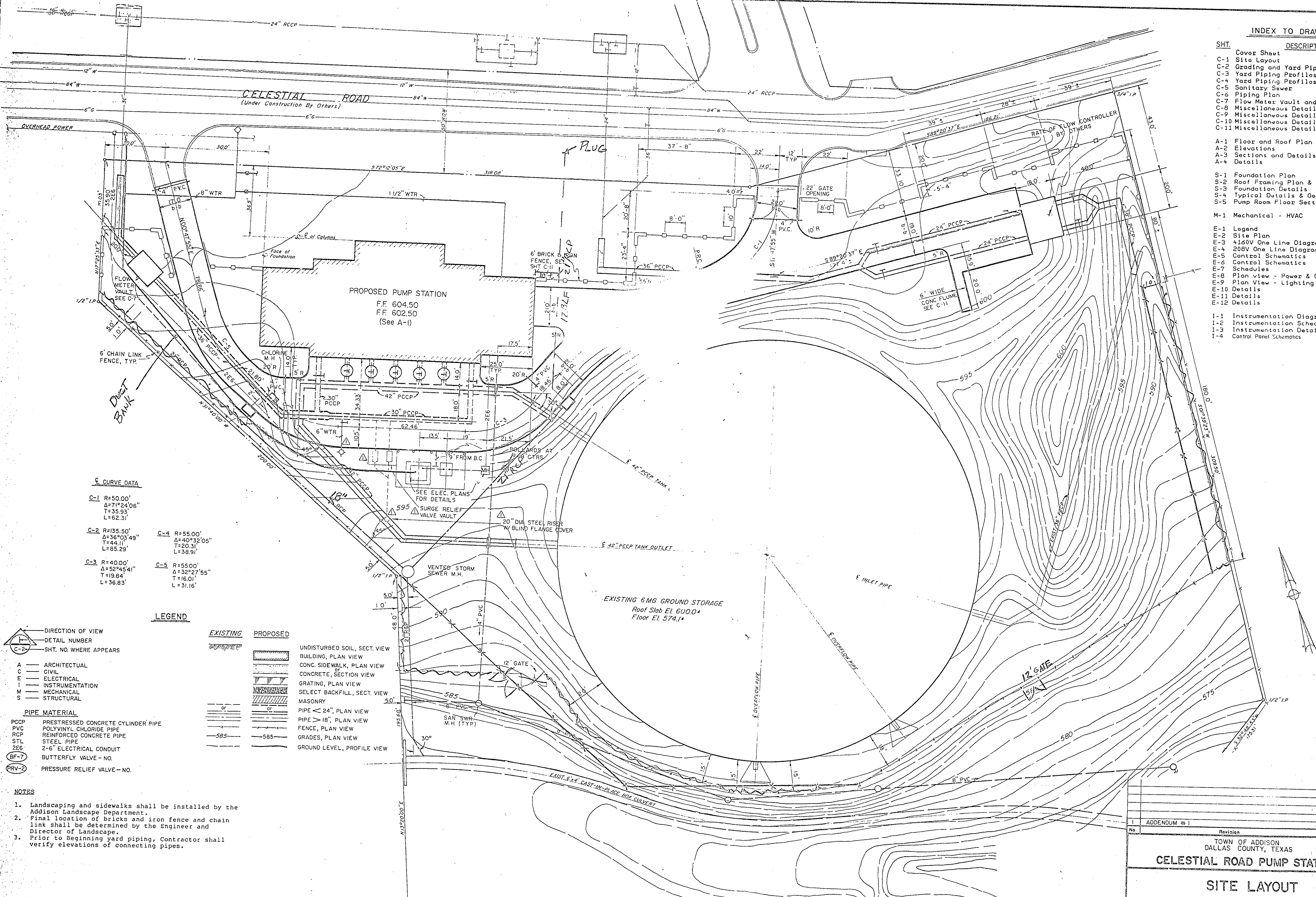


INDEX TO DRAWINGS

SHT.	DESCRIPTION
Cover Sheet	Cover Sheet
C-1	Site Layout
C-2	Grading and Yard Piping Plan
C-3	Yard Piping Profiles
C-4	Sanitary Sewer
C-5	Piping Plan
C-6	Flow Meter Vault and Details
C-7	Miscellaneous Details - Paving
C-8	Miscellaneous Details - Drainage
C-9	Miscellaneous Details - Water
C-10	Miscellaneous Details - Site Work
A-1	Floor and Roof Plan
A-2	Elevations
A-3	Sections and Details
A-4	Details
S-1	Foundation Plan
S-2	Roof Framing Plan & Framing Details
S-3	Foundation Details
S-4	Typical Details & General Notes
S-5	Pump Room Floor Sections & Details
M-1	Mechanical - HVAC
E-1	Legend
E-2	Site Plan
E-3	4160V One Line Diagram
E-4	208V One Line Diagram
E-5	Control Schematics
E-6	Control Schematics
E-7	Schedules
E-8	Plan view - Power & Control
E-9	Plan view - Lighting & HVAC
E-10	Details
E-11	Details
E-12	Details
I-1	Instrumentation Diagram
I-2	Instrumentation Schedules
I-3	Instrumentation Details
I-4	Control Panel Schematics



**CURVE DATA**

C-1	R=50.00' Δ=71°24'06" T=35.93' L=62.31'	C-4	R=55.00' Δ=40°32'05" T=20.31' L=38.91'
C-2	R=135.50' Δ=36°03'49" T=44.11' L=85.29'	C-5	R=55.00' Δ=32°27'55" T=16.01' L=31.16'
C-3	R=40.00' Δ=52°45'41" T=19.84' L=36.83'		

LEGEND

EXISTING	PROPOSED	DESCRIPTION
[Symbol]	[Symbol]	UNDISTURBED SOIL, SECT. VIEW
[Symbol]	[Symbol]	BUILDING, PLAN VIEW
[Symbol]	[Symbol]	CONC. SIDEWALK, PLAN VIEW
[Symbol]	[Symbol]	CONCRETE, SECTION VIEW
[Symbol]	[Symbol]	GRATING, PLAN VIEW
[Symbol]	[Symbol]	SELECT BACKFILL, SECT. VIEW
[Symbol]	[Symbol]	MASONRY
[Symbol]	[Symbol]	PIPE < 24", PLAN VIEW
[Symbol]	[Symbol]	PIPE > 18", PLAN VIEW
[Symbol]	[Symbol]	FENCE, PLAN VIEW
[Symbol]	[Symbol]	GRADES, PLAN VIEW
[Symbol]	[Symbol]	GROUND LEVEL, PROFILE VIEW

PIPE MATERIAL	DESCRIPTION
PCCP	PRESTRESSED CONCRETE CYLINDER PIPE
PVC	POLYVINYL CHLORIDE PIPE
RCP	REINFORCED CONCRETE PIPE
STL	STEEL PIPE
2EG	2-6" ELECTRICAL CONDUIT
BF-7	BUTTERFLY VALVE - NO.
PRV-2	PRESSURE RELIEF VALVE - NO.

- NOTES**
- Landscaping and sidewalks shall be installed by the Addison Landscape Department.
  - Final location of bricks and iron fence and chain link shall be determined by the Engineer and Director of Landscape.
  - Prior to beginning yard piping, Contractor shall verify elevations of connecting pipes.

ADDENDUM #1		RCH	3-20-87
No.	Revision	By	Date
TOWN OF ADDISON DALLAS COUNTY, TEXAS			
<b>CELESTIAL ROAD PUMP STATION</b>			
<b>SITE LAYOUT</b>			
<b>GINN, INC.</b> Consulting Engineers Dallas, Texas			
Designed - RCH	Drawn - GAP	Date - JAN, 1987	Job No. - 217
Approved - HWG	Checked - GAF	Scale - 1"=20'	Sheet C-1 OF

Randall C. Hill  
2-19-1987