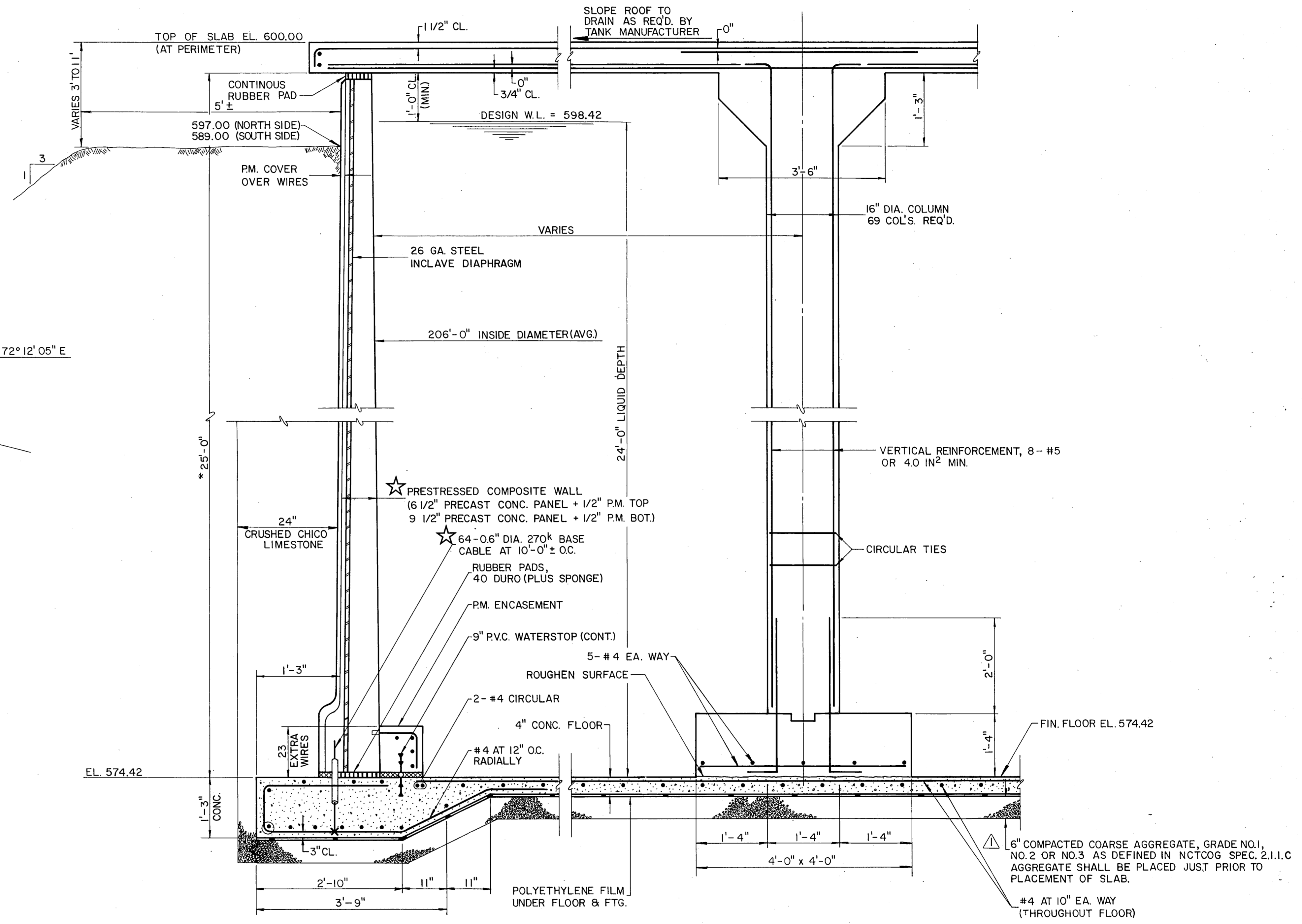


- NOTES:
1. M.S. DENOTES TYPICAL REINFORCEMENT THRU MIDDLE STRIP.
 2. C.S. DENOTES TYPICAL REINFORCEMENT THRU COLUMN STRIP.

★ ROOF PLAN
N.T.S.



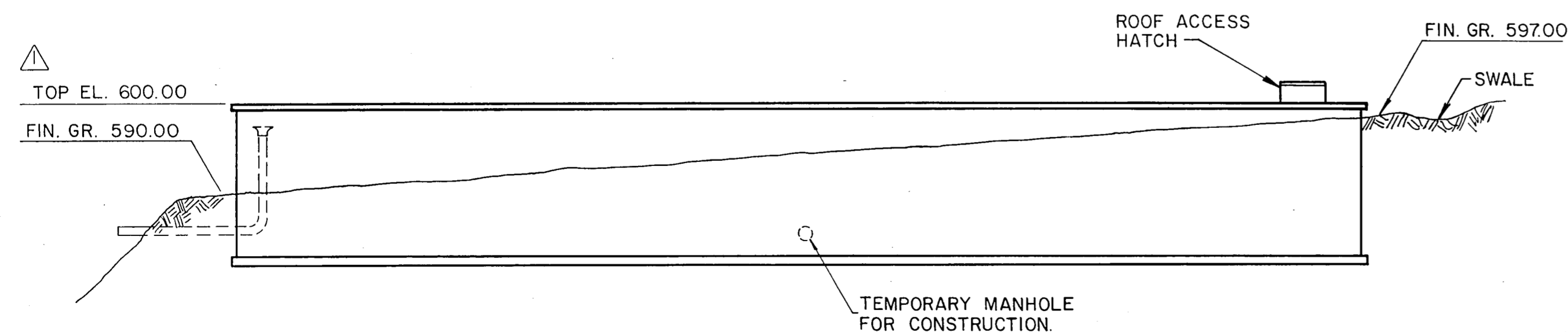
★ SECTION THRU COLUMN STRIP
N.T.S.

NOTE: MAXIMUM SOIL PRESSURE = 10,000 P.S.F.

- ★ HORIZONTAL PRESTRESSING WIRES AT 150,000 P.S.I. INITIAL AND 120,000 P.S.I. DESIGN STRESS WITH 61 WIRES/FT. AT BOTTOM TO 14 WIRES/FT. AT 6'-0" FROM TOP OF WALL AND 14 WIRES/FT. TO TOP OF WALL.
WIRE DIAMETER BEFORE PRESTRESSING = 0.192"
DIE DIAMETER = 0.164"

NOTES:

1. P.M. = PNEUMATIC MORTAR
2. MINIMUM 28 DAY CONCRETE CYLINDER STRENGTHS:
FLOOR, FOOTING & COLUMN FOOTING 3000 P.S.I.
ROOF SLAB 4000 P.S.I.
COLUMN CONCRETE 4000 P.S.I.
★ WALL CONCRETE 4500 P.S.I.
PNEUMATIC MORTAR 4500 P.S.I.
3. ROOF LIVE LOAD = 100 PSF.
4. REINFORCING STEEL SHALL CONFORM TO ASTM A-615 GR-60.



ELEVATION (LOOKING WEST)
N.T.S.

RECORD COPY



REVISION TOP OF TANK ELEVATIONS		RCH	5-7-86
No.	Revision	By	Date
TOWN OF ADDISON DALLAS COUNTY, TEXAS			
6 MG CELESTIAL ROAD STORAGE TANK			
PLAN AND SECTIONS			
GINN, INC. Consulting Engineers Dallas, Texas			
Designed - RCH	Drawn - ALA	Date - FEB., 1986	Job No. - 215
Approved - HWG	Checked - GF	Scale - AS SHOWN	Sheet 2 of 8