

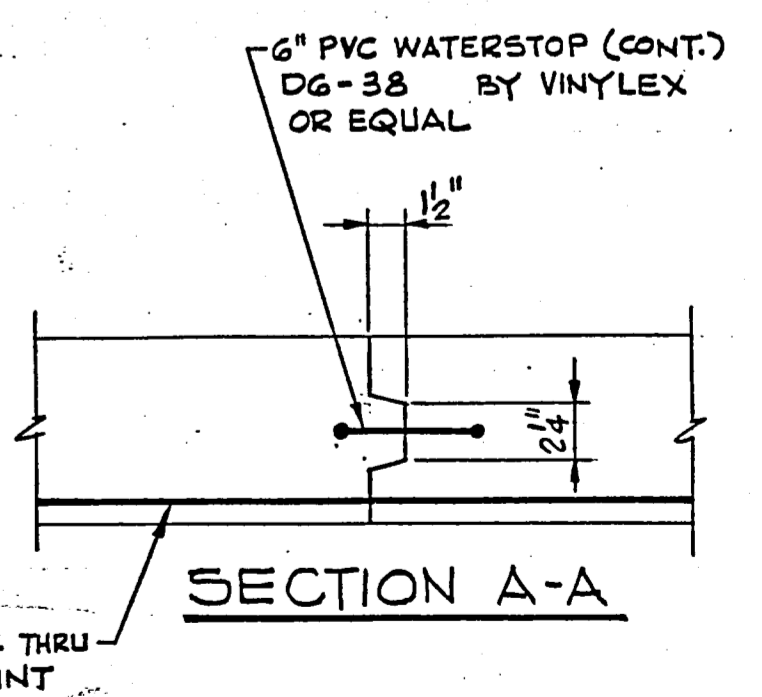
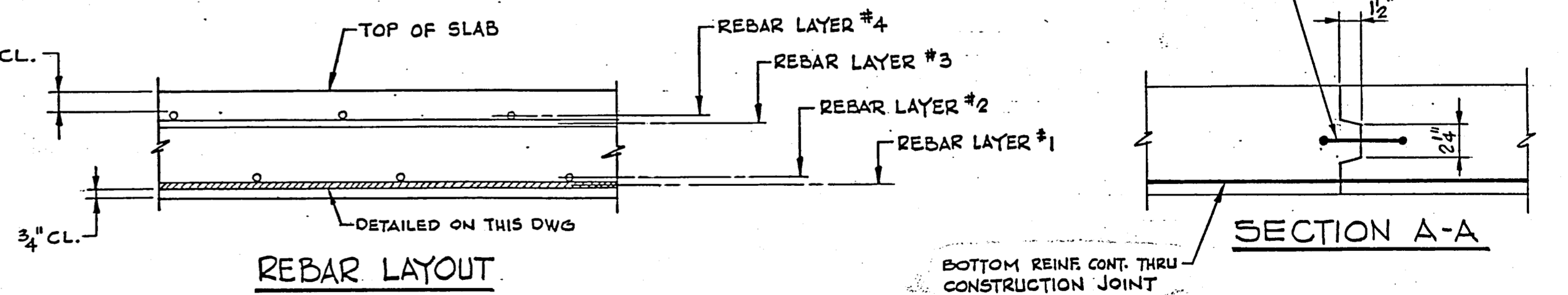
NOTE:
 COLUMNS A-3, A-5, A-7, C-1, C-9, E-1, E-9;
 G-1, G-9 & J-3, J-5 & J-7 ARE OFFSET FROM
 COLUMN 5'S SHOWN ABOVE.

BUNDLE MK	REINF. PER BUNDLE NO. SIZE	LENGTH	NO. OF BUNDLES	TOTAL BUNDLES NO. BARS	ORDER	BAR WEIGHT			LOCATION	SKETCH
						#5	#4	#3		
MB1	533 #4	40'-0"	—	533	540	14,429			CONTINUOUS GRID	
MB2	525 #4	30'-0"	—	525	535	10,721			CONTINUOUS GRID	
MB3	2 #4	19'-11"	4	8	8	106			MID STRIPS E-D & E-F IN END BAYS	
MB4	3 #4	17'-9"	4	12	13	154			MID STRIPS C-D & E-F IN END BAYS	
* MB5	3 #4	30'-0"/22'-9"	4	12	13	229			MID STRIPS E-B & G-H IN END BAYS	
* MB6	3 #4	36'-0"/26'-6"	4	12	13	271			MID STRIPS B-A & H-J IN END BAYS	
CB1	9 #4	19'-11"	2	18	20	266			END BAYS COL. LINE E	
CB2	6 #4	16'-0"	24	144	150	1603			INTERIOR BAYS	
CB3	9 #4	19'-9"	4	36	38	502			END BAYS COLUMN LINE D & F	
CB4	7 #4	16'-0"	8	56	60	641			INTERIOR BAYS LINES 2-3 & 7-8	
* CB5	6 #4	22'-8"/15'-6"	4	24	27	346			END BAYS LINES B & H	
* CB6	4 #4	16'-0"	28	112	120	1283			INTERIOR BAYS	
* CB7	8 #4	26'-3"/13'-6"	4	32	34	451			END BAYS LINES A & J	
CB8A	4 #4	22'-9"	10	40	42	638			MID STRIP E-D ONLY	
TOTAL WEIGHT						31640				

PART ROOF FRAMING PLAN
 SCALE: 3/32" = 1'-0"

- NOTES:**
- REINFORCING STEEL TO CONFORM TO ASTM A615, GRADE 60.
 - FOR HATCH, VENT & SONIC LEVEL TRANSMITTER DETAILS & APPL. REINF. SEE DWG TEX. 83-007-12
 - FOR INLET PIPE SEE DWG TEX. 83-007-6
 - FOR TYP. MIDDLE STRIP & COLUMN STRIP SECTIONS SEE DWG TEX. 83-007-12
 - REINFORCING BARS DETAILED ON THIS DWG ARE FOR LAYER NO. 1. (SEE REBAR LAYOUT, THIS DWG)
 - FOR OTHER LAYERS SEE DWGS TEX. 83-007-9, -10 & -11
 - REINF. MARKED WITH SUFFIX "A" TO BE PLACED NEAR THE ϕ COLUMN.
 - BARS MARKED WITH * TO BE CUT IN EQUAL INCREMENTS AND BAR WEIGHTS LISTED ARE FOR AVERAGE LENGTHS
 - SEE DWG TEX. 83-007-3 & 5 FOR MK ANC-3 AT OVERFLOW PIPES

- FORMWORK NOTES:**
- FORMWORK DESIGN AND RESHORING SHALL BE IN ACCORDANCE WITH ACI 347, LATEST EDITION.
 - FORMS TO REMAIN UNTIL SLAB REACHES DESIGN STRENGTH BUT NOT LESS THAN 7 DAYS UNLESS RESHORING IS USED.
 - SLAB BETWEEN CONSTRUCTION JOINT AND COLUMNS IS NOT DESIGNED FOR CANTILEVER ACTION. FORMWORK IN THIS AREA MUST REMAIN UNTIL ADJACENT SLAB IS CAST AND HAS ACHIEVED FULL STRENGTH.



NO.	DATE	DESCRIPTION	BY	CHKD
A	5/13/86	REVISED SECTION A-A	E	RAO
A	4/13/87	AS BUILT	E	

PRELOAD
 839 STEWART AVENUE, GARDEN CITY, NEW YORK, 11530

THIS DRAWING IS THE PROPERTY OF THE PRELOAD COMPANY, INC. AND/OR PRELOAD TECHNOLOGY, INC. AND IS SUBJECT TO RETURN ON DEMAND. IT CONTAINS FEATURES OF DESIGN WHICH ARE FULLY COVERED BY PATENTS AND PATENTS PENDING AND COPYRIGHTS. IT IS SUBMITTED FOR USE ONLY IN CONNECTION WITH PROPOSALS OR CONTRACTS OF PRELOAD OR ITS LICENSEES. UPON THE EXPRESS CONDITION THAT IT MAY NOT BE USED ON ANY OTHER DIFFERENT PROJECTS WITHOUT PRIOR APPROVAL OF PRELOAD.

WORKING DRAWING
 ONE 6.0 M.G. GROUND STORAGE RESERVOIR
 ADDISON, TEXAS
 ROOF SLAB REINFORCING
 LAYER NO. 1

DESIGNED: RAO
 CHECKED: FD
 SCALE:
 DATE: 4-24-86
 CONTRACT NUMBER: 86 PE 004
 DRAWING NUMBER: 83-007-B