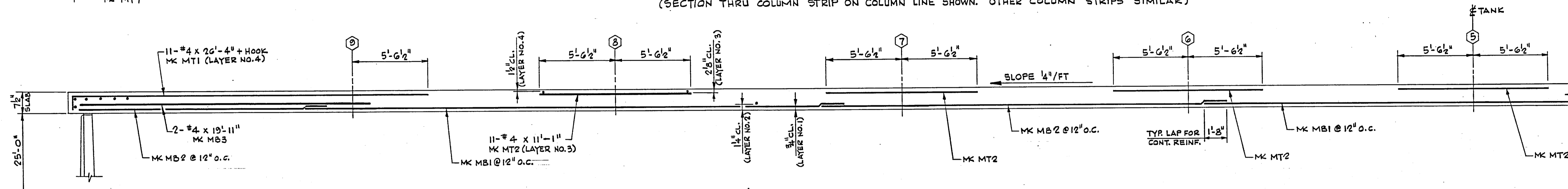
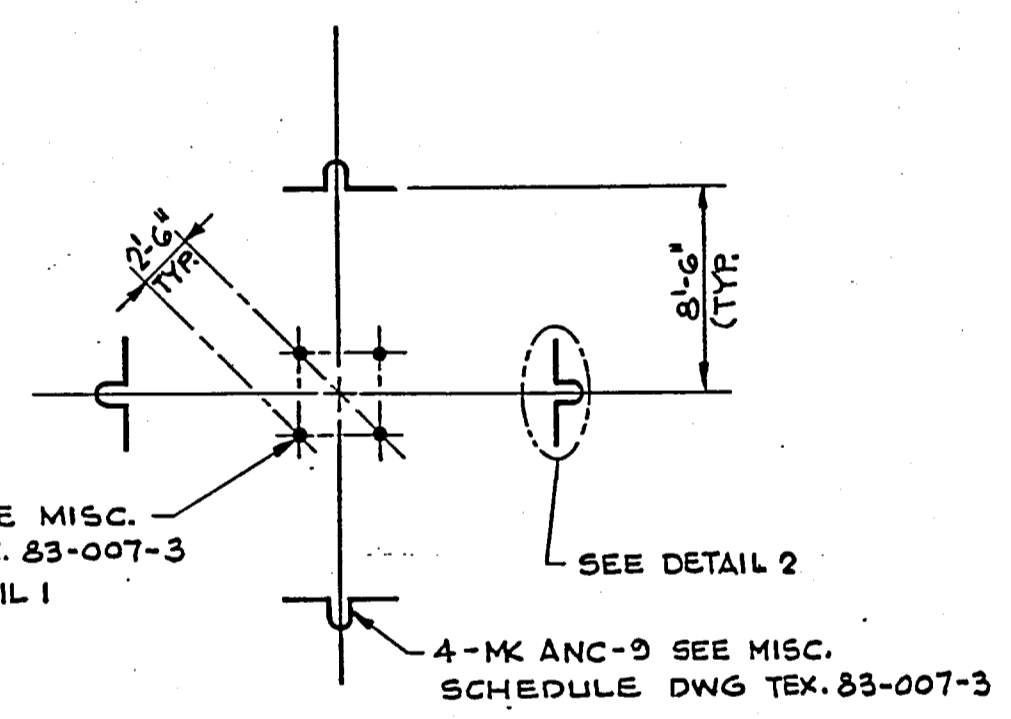
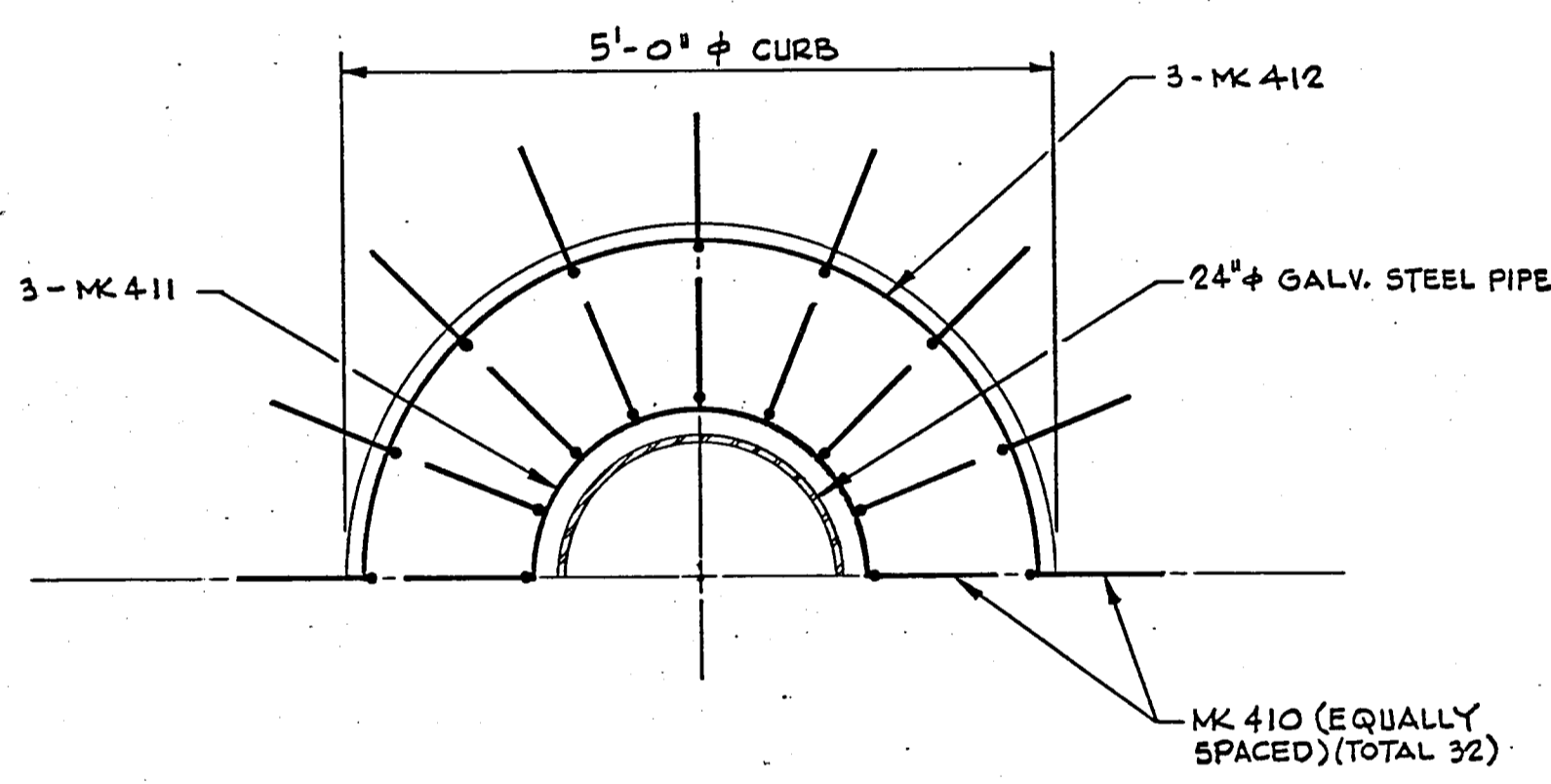


**SECTION B-B (SECTION THRU COLUMN STRIP)**  
 (SECTION THRU COLUMN STRIP ON COLUMN LINE SHOWN. OTHER COLUMN STRIPS SIMILAR)



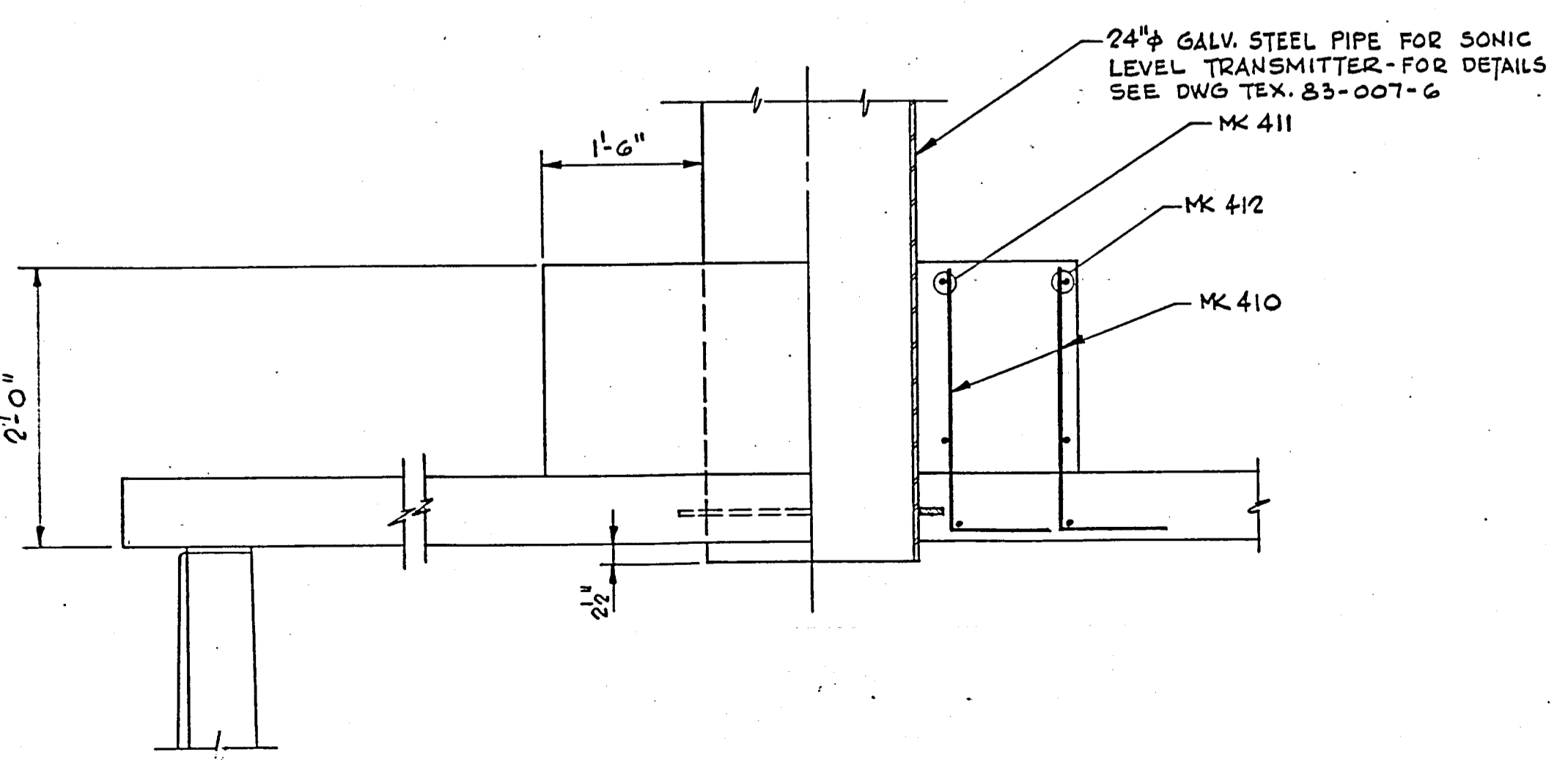
**SECTION C-C (SECTION THRU MIDDLE STRIP)**  
 SECTION THRU MIDDLE STRIP ABOVE COLUMN CENTERLINE SHOWN. OTHER MIDDLE STRIPS SIMILAR.

**NOTE:**  
 REINF. IN ALL LAYERS NOT SHOWN COMPLETELY FOR CLARITY

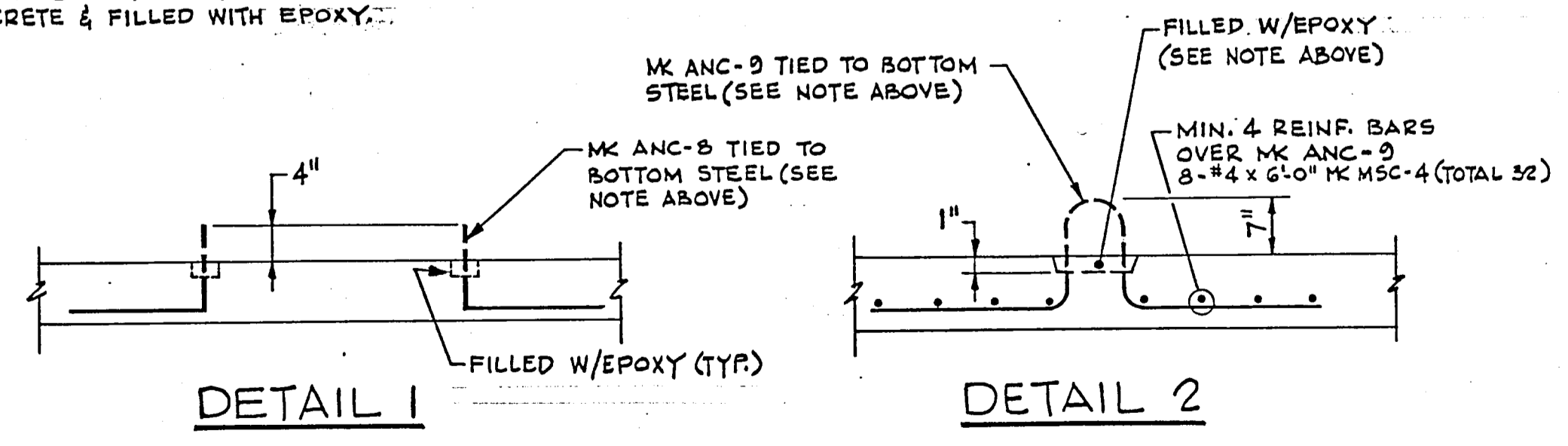


**WIREWINDER CENTER PIN ANCHORAGE ARRANGEMENT**

**NOTE:**  
 MK ANC-8 & MK ANC-9 ARE FOR SUPPORT OF CENTER PIN OF WIREWINDER. AFTER COMPLETION OF WORK MK ANC-8 & MK ANC-9 SHOULD BE CUT OFF TO 1" BELOW TOP OF CONCRETE & FILLED WITH EPOXY.



**SONIC LEVEL TRANSMITTER DETAIL**



**DETAIL 1**

**DETAIL 2**

REVISIONS				
NO.	DATE	DESCRIPTION	BY	CKD
A	4/13/87	AS BUILT	E	



839 STEWART AVENUE, GARDEN CITY, NEW YORK, 11530  
 THIS DRAWING IS THE PROPERTY OF THE PRELOAD COMPANY, INC. AND/OR PRELOAD TECHNOLOGY, INC. AND IS SUBJECT TO RETURN ON DEMAND. IT CONTAINS FEATURES OF DESIGN WHICH ARE FULLY COVERED BY PATENTS AND PATENTS PENDING AND COPYRIGHTS. IT IS SUBMITTED FOR USE ONLY IN CONNECTION WITH PROPOSALS OR CONTRACTS OF PRELOAD OR ITS LICENSEES, UPON THE EXPRESS CONDITION THAT IT MAY NOT BE USED ON ANY OTHER DIFFERENT PROJECTS WITHOUT PRIOR APPROVAL OF PRELOAD.

WORKING I  
 ONE G.O.M.G. GROUND S  
 ADDISON, TE  
 ROOF SECT  
 DRAWN: E SCALE:  
 DESIGNED: RAO APPROVED:  
 CHECKED: PD DATE: 4/24/86