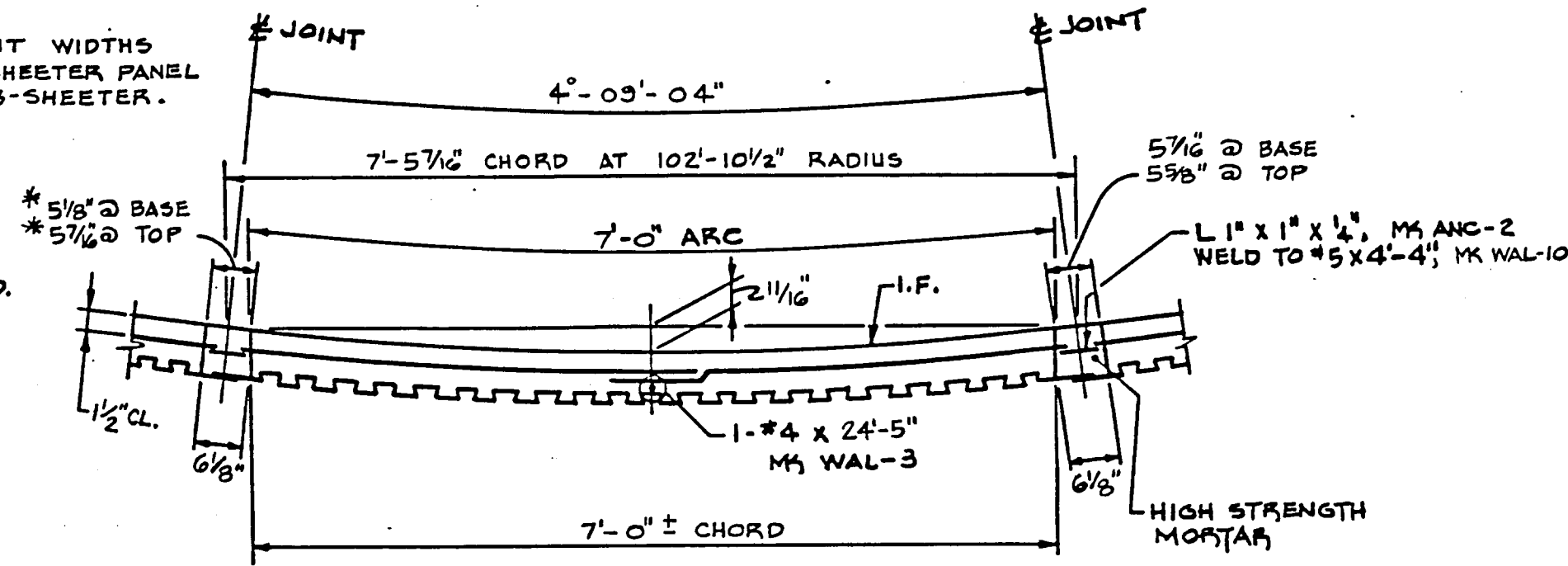


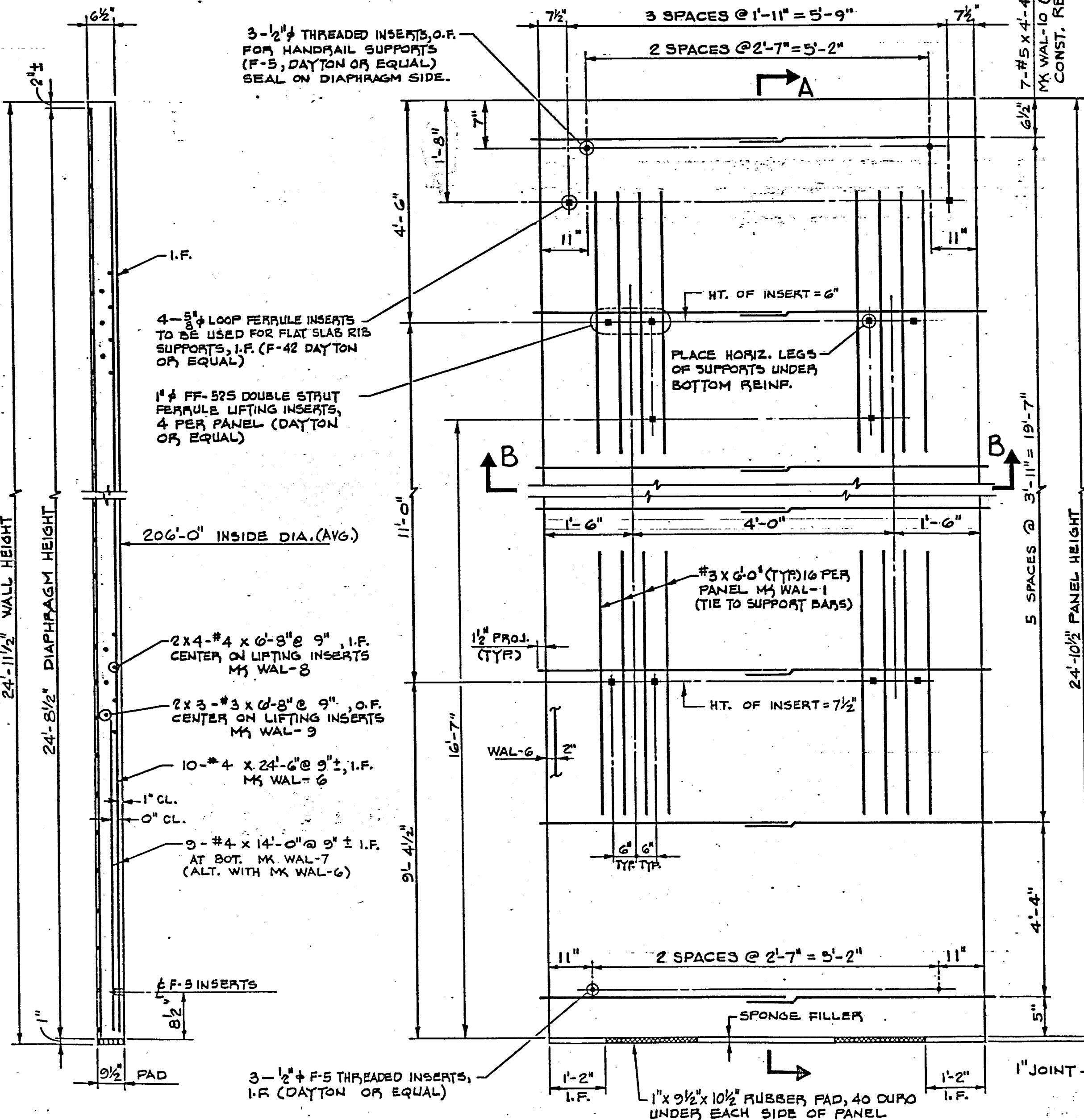
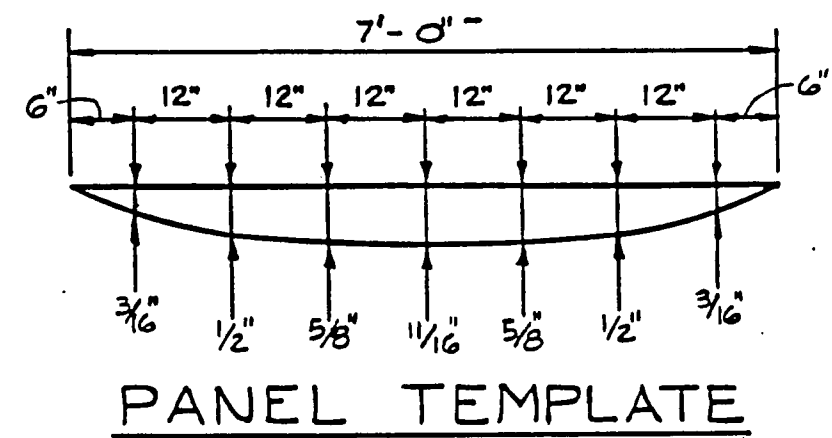
ALL PANEL NOTES:

- 1. PACK ALL INSERT HOLES WITH GROUT AND APPLY TWO COATS OF EPOXY UPON COMPLETION OF THEIR USE.
- 2. INSIDE FACE OF PANEL TO BE FINE BRUSH FINISHED.
- 3. PANELS NOT TO BE LIFTED UNTIL CONCRETE STRENGTH OF 3500 PSI IS ATTAINED.
- 4. LIFTING CABLE: 4 POINT PICKUP
40' CABLE LENGTH

* INSIDE JOINT WIDTHS WHERE 2-SHEETER PANEL MEETS A 3-SHEETER.



SECTION B-B



SECTION A-A

ODD WALL PANEL ELEVATION

(PANEL WT. = 8.7 TONS)

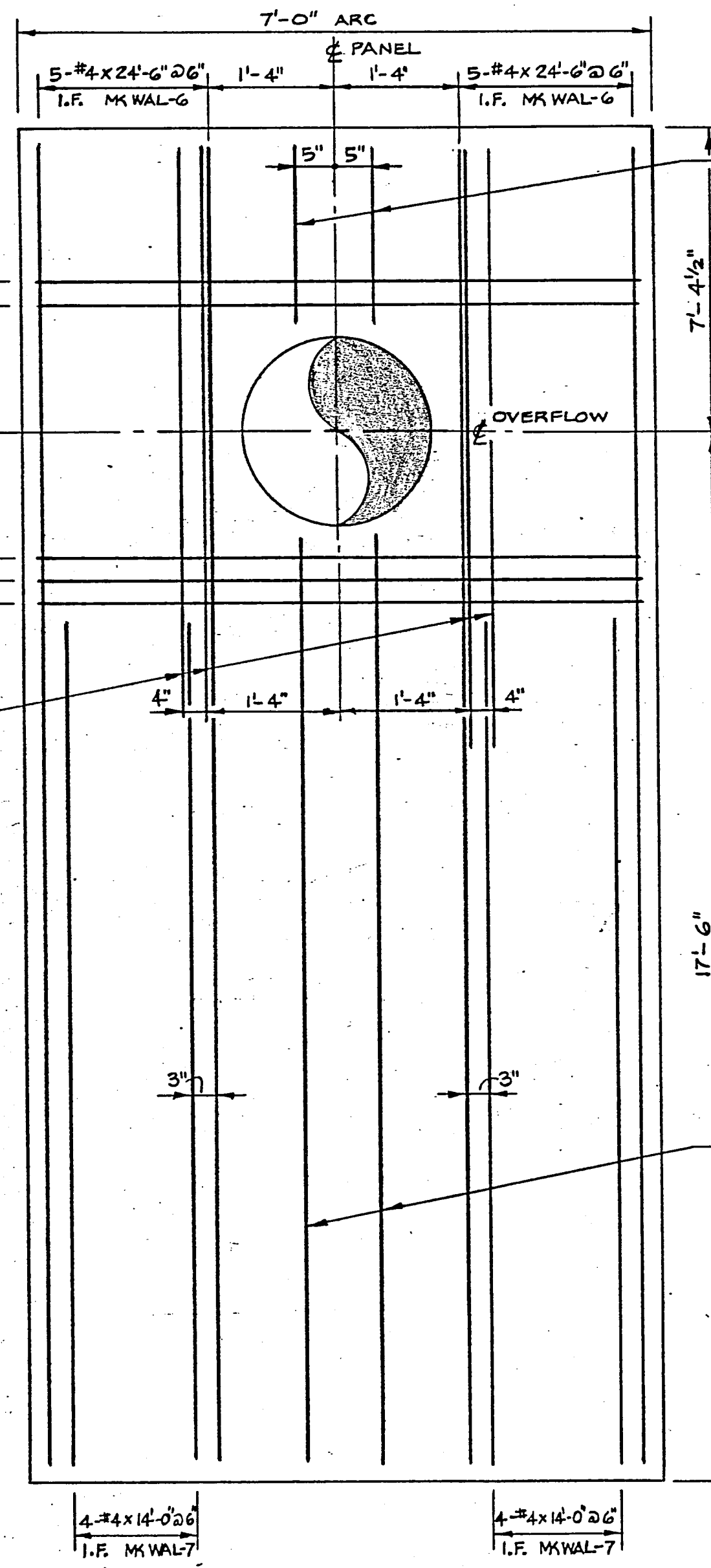
13-TOTAL (12 AS SHOWN)

FOR 2 SHEETER PANEL W/OVERFLOW SEE THIS DWG.

7-#5 x 4'-4" EA. SIDE MK WAL-10 (TOT. 14) CONST. REINF.

2-#4 x 6'-8" E.F. (TOTAL-4) MK WAL-3

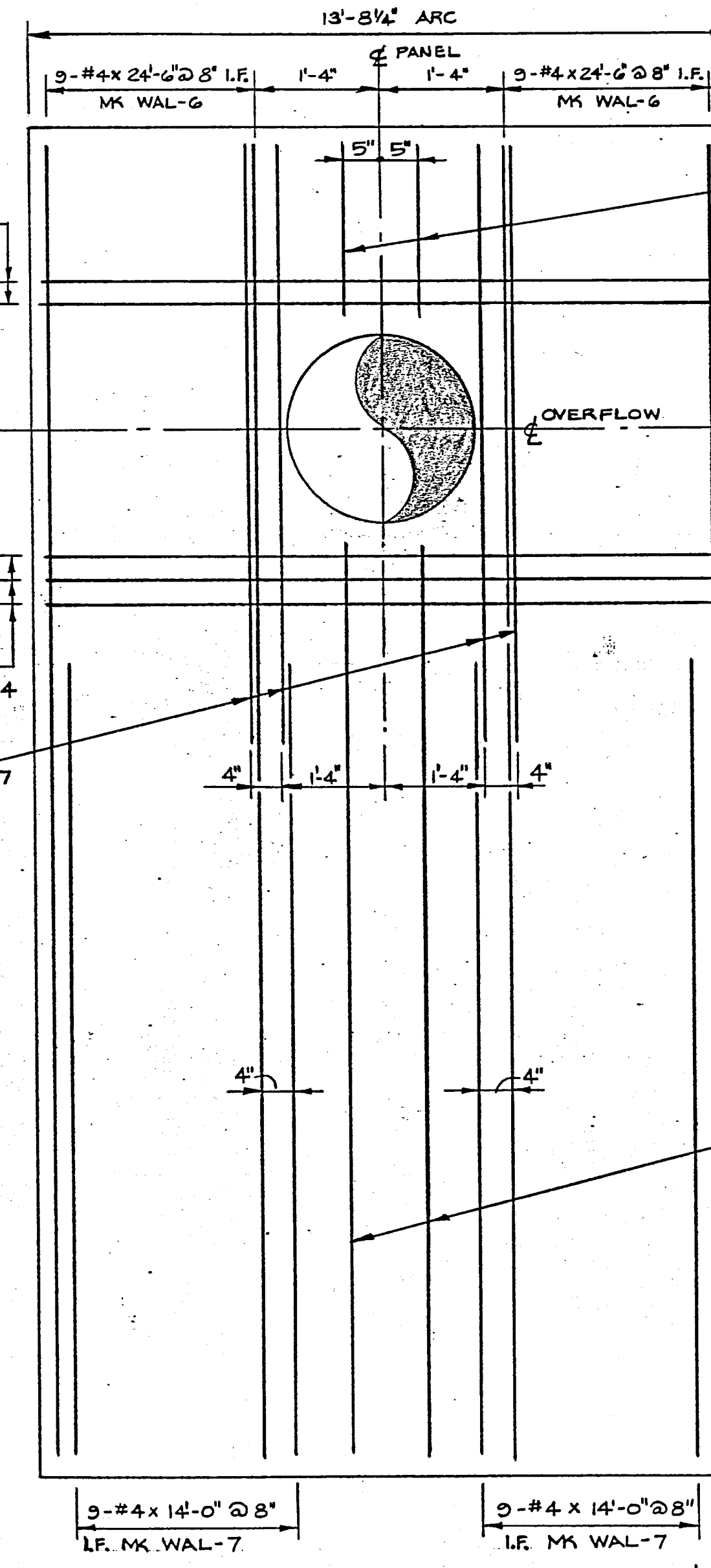
3-#4 x 6'-8" E.F. (TOTAL-6) MK WAL-3
2-#4 x 14'-0" O.F. EA. SIDE OF OPG. MK WAL-7 (TOTAL-4)



2-SHEETER

OVERFLOW PANEL

NOTE: MK WAL-1, WAL-8 & WAL-9 AT LIFTING INSERTS, AND MK WAL-3 & WAL-10 NOT SHOWN. SEE ODD PANEL DETAILS THIS DWG.



4-SHEETER

OVERFLOW PANEL

NOTE: MK WAL-1 & WAL-4 AT LIFTING INSERTS, AND MK WAL-3 & WAL-12 NOT SHOWN. SEE DWG. TEX. 83-007-2.

WORKING

THE DETAILS SHOWN ON THIS DRAWING SHALL BE PRODUCED WITHIN THE GUIDELINES AND REQUIREMENTS SPECIFIED IN PRELOAD CO. CONSTRUCTION SPECIFICATIONS & PROCEDURES, NO. CS-283.

REVISIONS				PRELOAD		ONE G.O.M.G. WATE ADDISON,	
NO.	DATE	DESCRIPTION	BY	CKD			
A	5/13/86	REVISED ODD WALL PNL ELEV. & NOTES ON OVERFLOW PANELS	E	RAO	839 STEWART AVENUE, GARDEN CITY, NEW YORK, 11530		
A	7/13/87	AS BUILT	E		THIS DRAWING IS THE PROPERTY OF THE PRELOAD COMPANY, INC. AND/OR PRELOAD TECHNOLOGY, INC. AND IS SUBJECT TO RETURN ON DEMAND. IT CONTAINS FEATURES OF DESIGN WHICH ARE FULLY COVERED BY PATENTS AND PATENTS PENDING AND COPYRIGHTS. IT IS SUBMITTED FOR USE ONLY IN CONNECTION WITH PROPOSALS OR CONTRACTS OF PRELOAD OR ITS LICENSEES, UPON THE EXPRESS CONDITION THAT IT MAY NOT BE USED ON ANY OTHER DIFFERENT PROJECTS WITHOUT PRIOR APPROVAL OF PRELOAD.		
					DESIGNED: RAO	SCALE: NONE	
					CHECKED: FD	DATE: 4-24-	