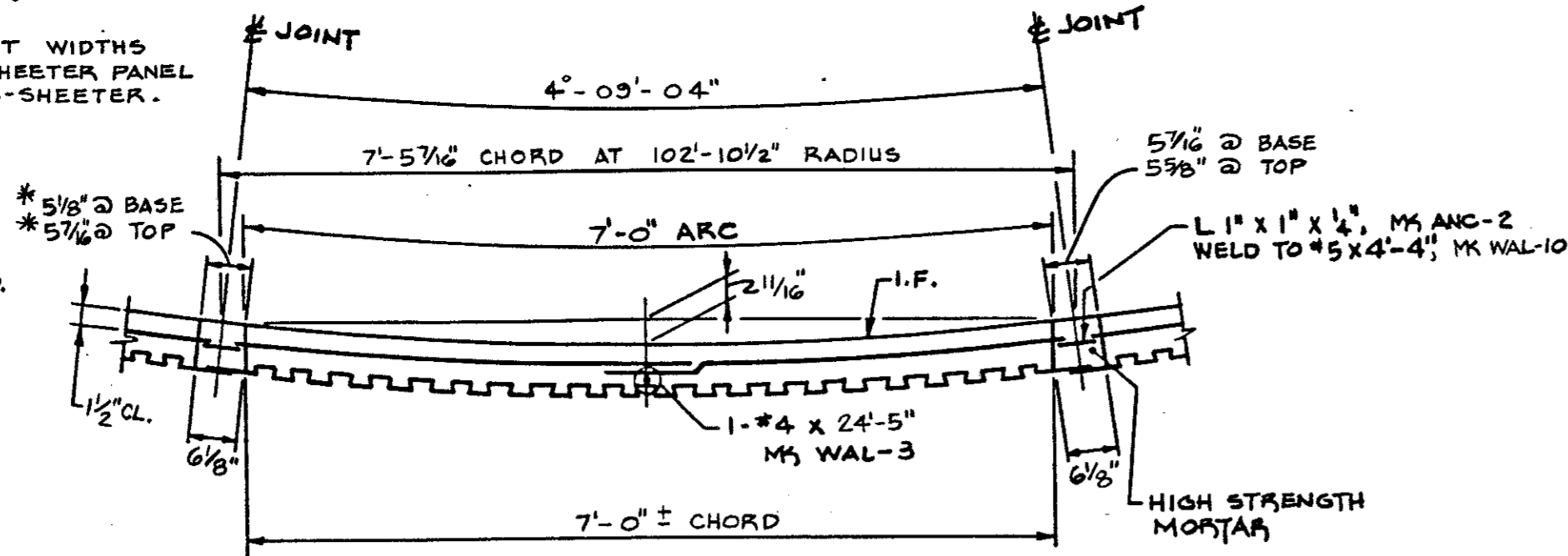


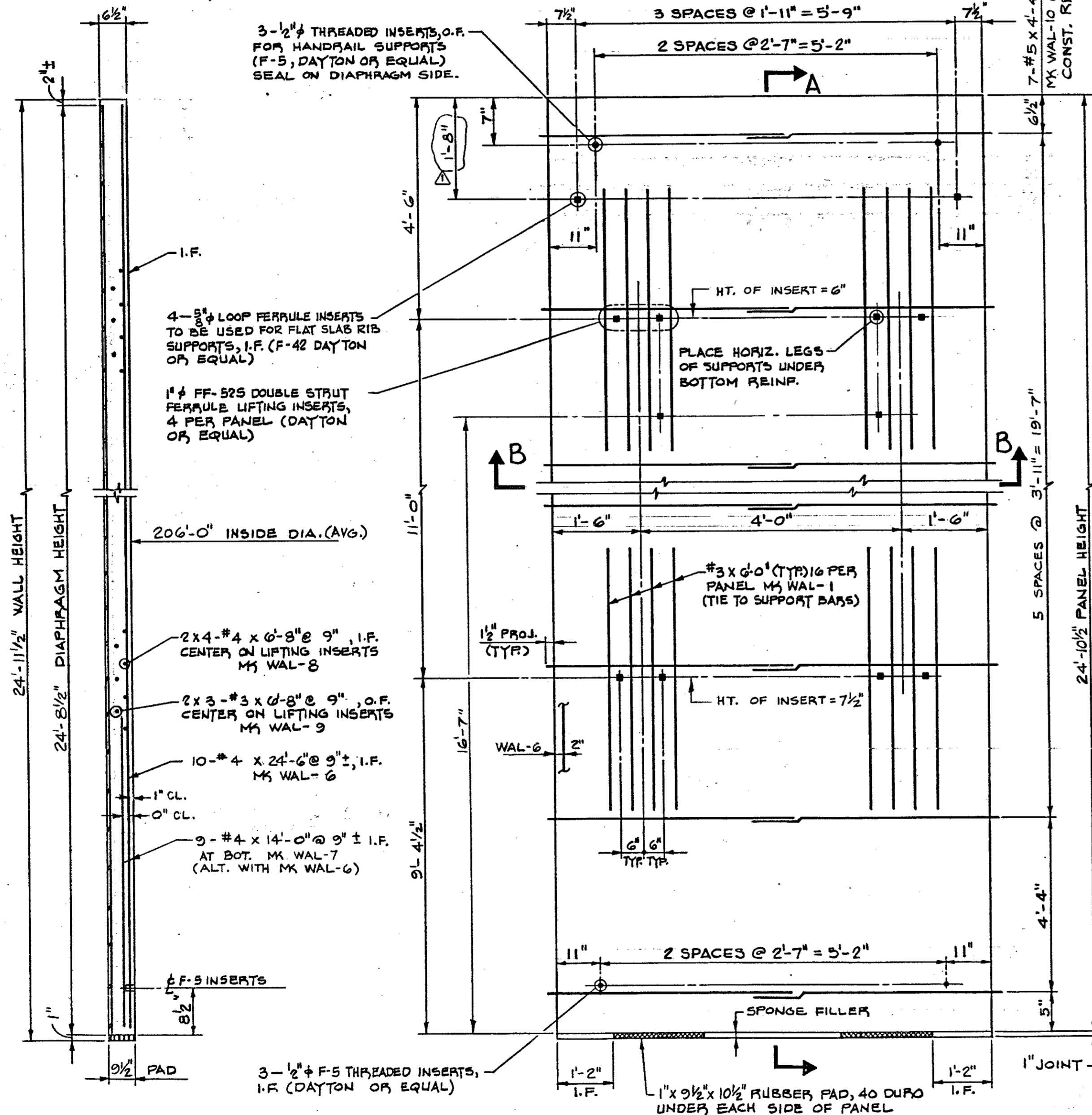
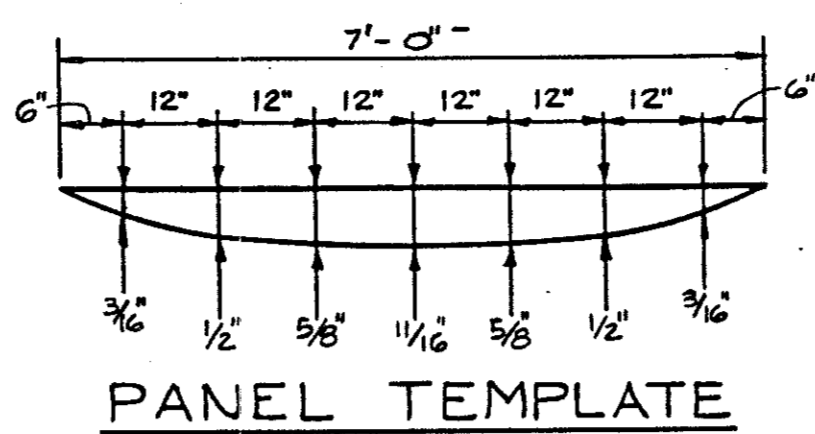
WALL PANEL NOTES:

1. PACK ALL INSERT HOLES WITH GROUT AND APPLY TWO COATS OF EPOXY UPON COMPLETION OF THEIR USE.
2. INSIDE FACE OF PANEL TO BE FINE BRUSH FINISHED.
3. PANELS NOT TO BE LIFTED UNTIL CONCRETE STRENGTH OF 3500 PSI IS ATTAINED.
4. LIFTING CABLE: 4 POINT PICKUP
40' CABLE LENGTH

* INSIDE JOINT WIDTHS WHERE 2-SHEETER PANEL MEETS A 3-SHEETER.

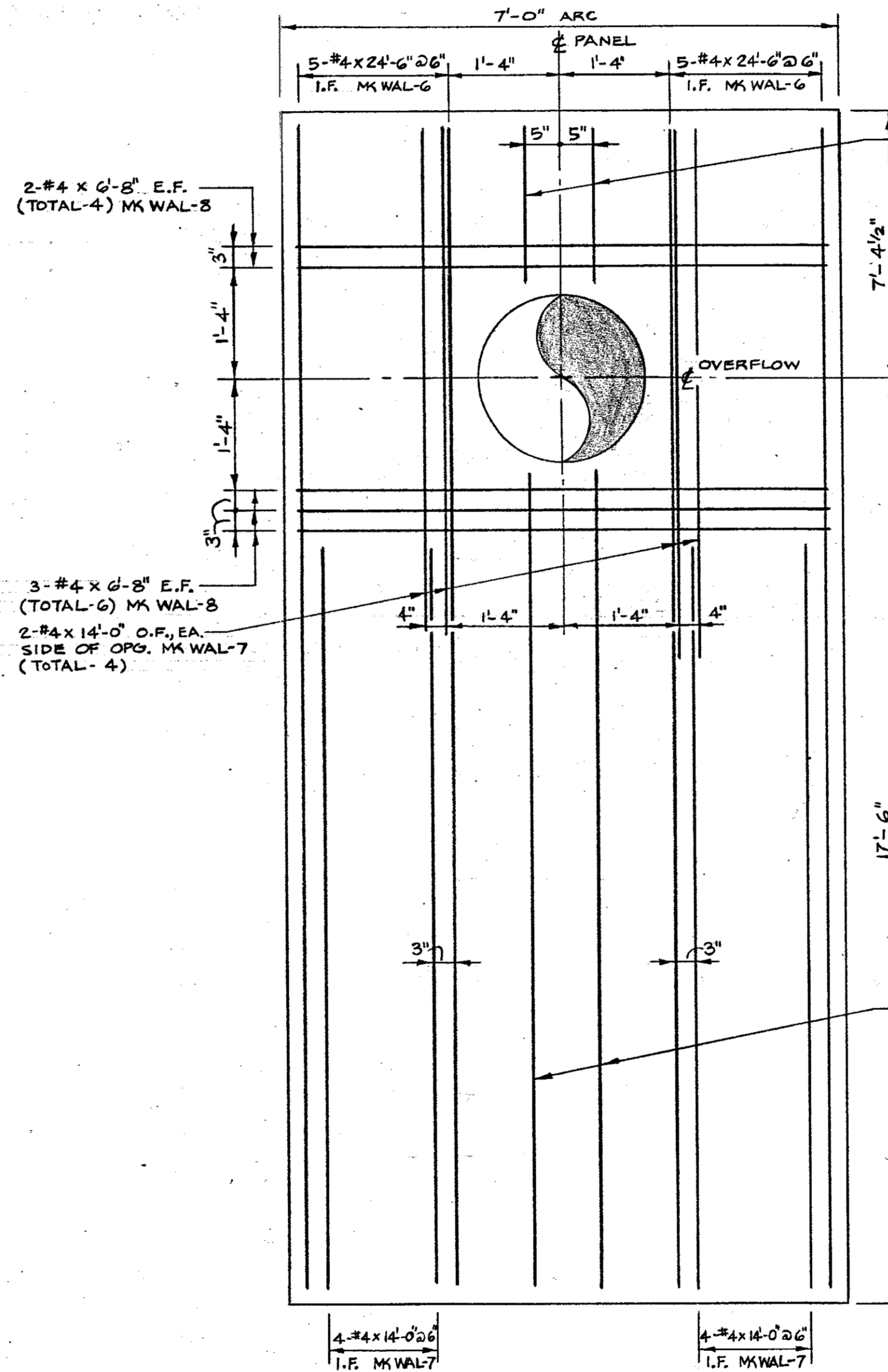


SECTION B-B



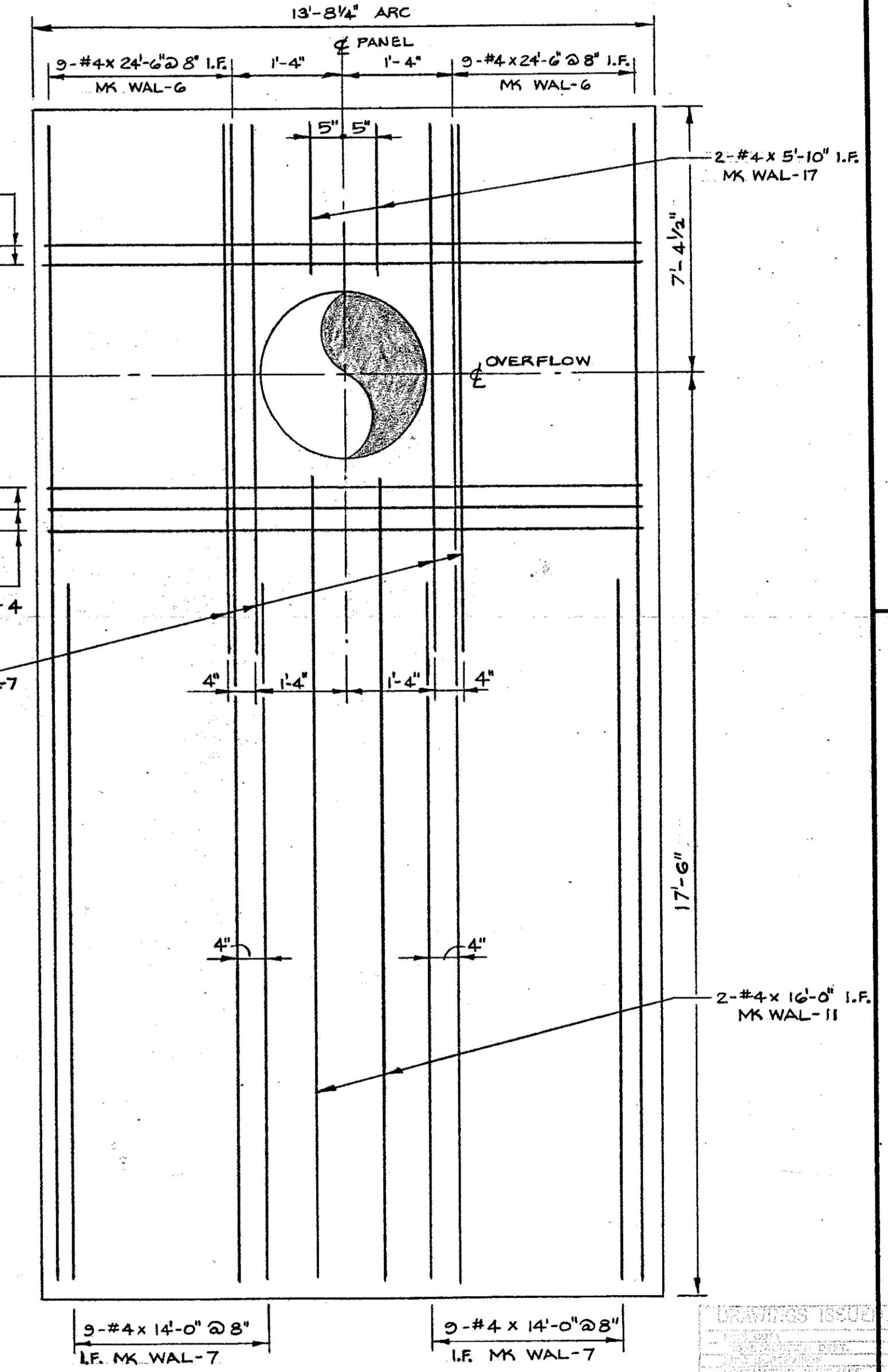
SECTION A-A

ODD WALL PANEL ELEVATION
(PANEL WT. = 8.7 TONS)
13-TOTAL (12 AS SHOWN)
FOR 2 SHEETER PANEL W/OVERFLOW SEE THIS DWG.



2-SHEETER OVERFLOW PANEL

NOTE: MK WAL-1, WAL-8 & WAL-9 AT LIFTING INSERTS, AND MK WAL-3 & WAL-10 NOT SHOWN. SEE ODD PANEL DETAILS THIS DWG.



4-SHEETER OVERFLOW PANEL

NOTE: MK WAL-1 & WAL-4 AT LIFTING INSERTS, AND MK WAL-3 & WAL-12 NOT SHOWN. SEE DWG. TEX. 83-007-2.

WORKING DRAWING

REVISIONS				
NO.	DATE	DESCRIPTION	BY	CKD
1	5/3/86	REVISED ODD WALL PNL ELEV. & NOTES ON OVERFLOW PANELS	EZ	ZAO



839 STEWART AVENUE, GARDEN CITY, NEW YORK, 11530

THIS DRAWING IS THE PROPERTY OF THE PRELOAD COMPANY, INC. AND/OR PRELOAD TECHNOLOGY, INC. AND IS SUBJECT TO RETURN ON DEMAND. IT CONTAINS FEATURES OF DESIGN WHICH ARE FULLY COVERED BY PATENTS AND PATENTS PENDING AND COPYRIGHTS. IT IS SUBMITTED FOR USE ONLY IN CONNECTION WITH PROPOSALS OR CONTRACTS OF PRELOAD OR ITS LICENSEES, UPON THE EXPRESS CONDITION THAT IT MAY NOT BE USED ON ANY OTHER DIFFERENT PROJECTS WITHOUT PRIOR APPROVAL OF PRELOAD.

ONE 6.0 M.G. WATER STORAGE TANK ADDISON, TEXAS		
ODD AND OVERFLOW PANELS		
DRAWN: JD	SCALE: NONE	CONTRACT NUMBER: 86 PE 004
DESIGNED: RAO	MTD:	DRAWING NUMBER: 83-007-13
CHECKED: FD	DATE: 4-24-86	

THE DETAILS SHOWN ON THIS DRAWING SHALL BE PRODUCED WITHIN THE GUIDELINES AND REQUIREMENTS SPECIFIED IN PRELOAD CO. CONSTRUCTION SPECIFICATIONS & PROCEDURES, REV. 7-82-82.