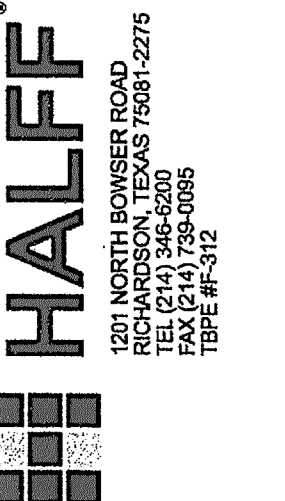
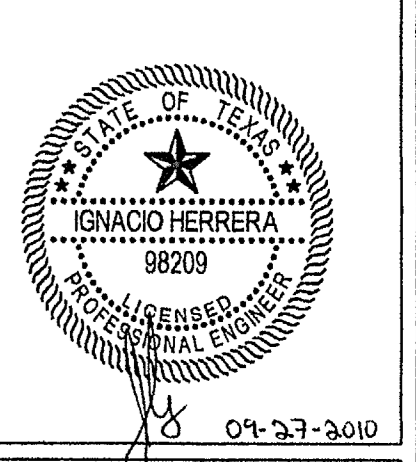


DASEKE RESIDENCE
5656 CELESTIAL ROAD
CITY OF ADDISON, TEXAS

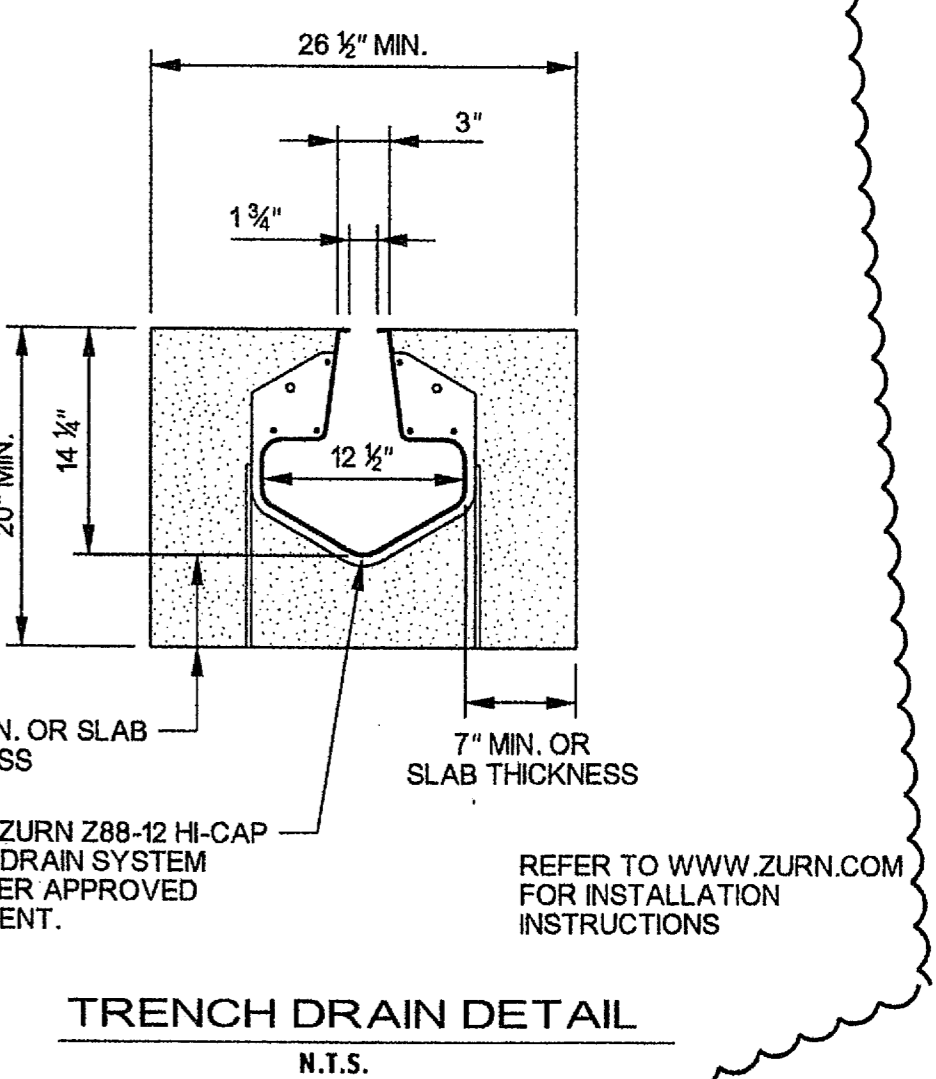
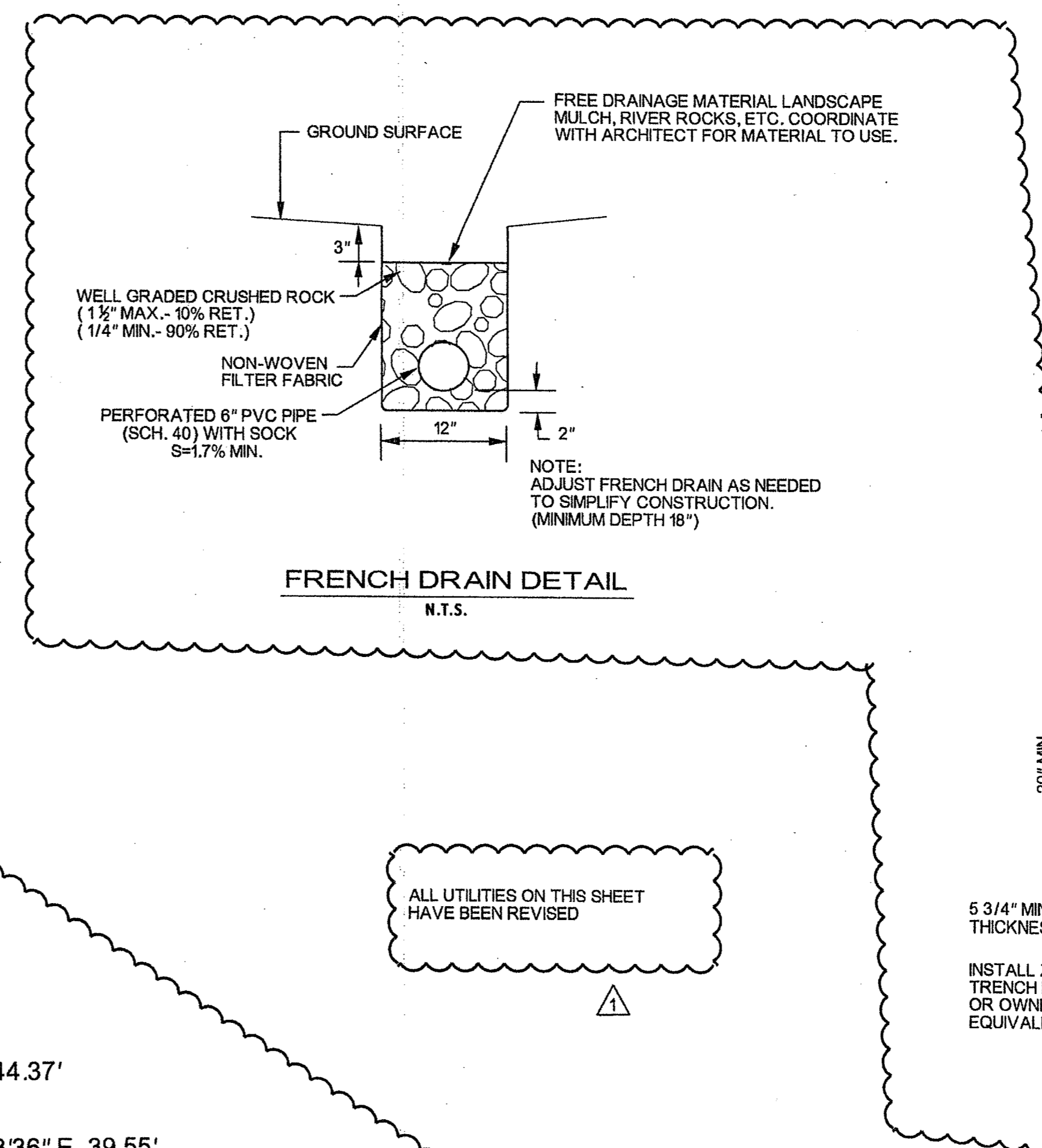


Revision No.	Date	Description
1	09-27-2010	Rev. for Permit and Construction



THE SEAL APPEARING ON THIS DOCUMENT WAS AUTHORIZED BY IGNACIO HERRERA, P.E., LICENSE NO. 98209, ON 04-23-2010. IF THIS SEAL IS REPRODUCED WITHOUT HIS WRITTEN PERMISSION, THE REPRODUCER IS AN OFFENSE UNDER THE TEXAS PROFESSIONAL ENGINEERING ACT. THE OFFICE OF HALFF ASSOCIATES, INC., 1201 NORTH BOWSER ROAD, ADDISON, TEXAS 75001, TYPE PLAN #1-330.

Project No.:	27431
Issued:	MAY 2010
Drawn By:	CAD
Checked By:	IH
Scale:	AS NOTED
Sheet Title	UTILITY PLAN
C3.01	
Sheet Number	



ALL UTILITIES ON THIS SHEET HAVE BEEN REVISED

NOTES

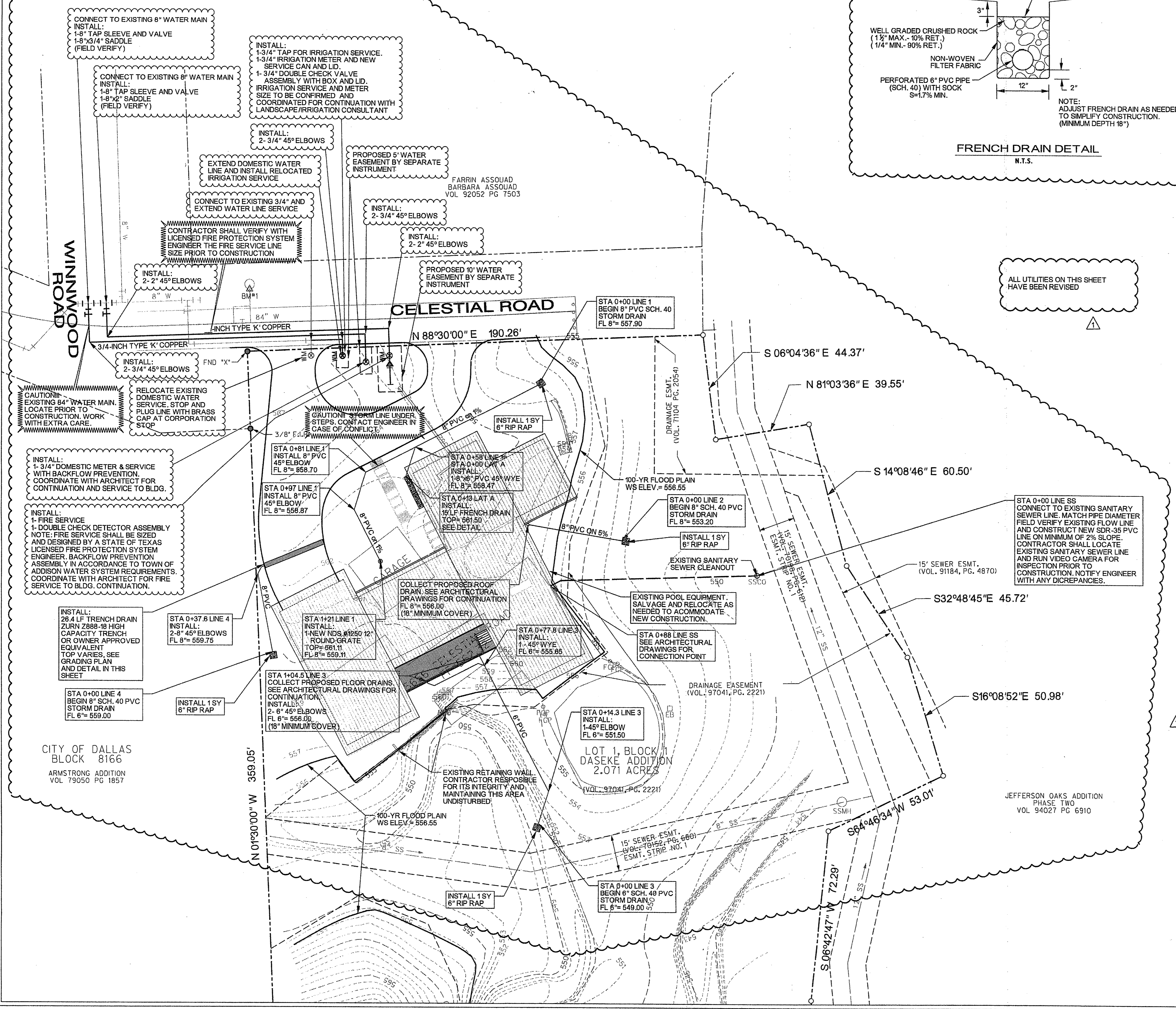
- CONTRACTOR TO CONTACT TOWN OF ADDISON FINANCE DEPARTMENT AT 972-450-7082 TO DISCONNECT WATER SERVICE PRIOR TO DEMOLITION OF EXISTING STRUCTURE.
- ALL WORK SHALL BE COMPLETED TO TOWN OF ADDISON REQUIREMENTS.
- ADJUST UTILITY LOCATION TO MINIMIZE TREE IMPACTS. CONTACT ENGINEER AS NEEDED.
- CONTRACTOR TO CONTACT DALLAS WATER UTILITIES TO MARK 84" WATER LINE. CONTRACTOR SHALL LOCATE EXISTING SANITARY SEWER LINE AND RUN VIDEO CAMERA FOR INSPECTION PRIOR TO CONSTRUCTION. NOTIFY ENGINEER WITH ANY DISCREPANCIES.
- ALL WATER MAIN MATERIALS SHALL BE IN ACCORDANCE WITH THE TOWN OF ADDISON WATER SYSTEM REQUIREMENTS.

LEGEND

- PROPERTY LINE
- EASEMENT LINE
- - - - - EXISTING CONTOUR
- - - - - EXISTING SANITARY SEWER
- == 663 == PROPOSED CONTOUR
- == PROPOSED STORM SEWER
- == PROPOSED WATER LINE
- - - - - PROPOSED SANITARY SEWER
- 562.25 PROPOSED SPOT ELEVATION
- 562.25 EXISTING SPOT ELEVATION
- 8" W EXISTING WATER LINE
- SSCO φ SANITARY SEWER MANHOLE
- SSMH ○ SANITARY SEWER CLEANOUT

BENCHMARKS

- (ON-SITE) "X" CUT ON THE NORTH SIDE OF CELESTIAL ROAD AND EAST SIDE OF WINWOOD RD. ELEV. = 568.70
- (OFF-SITE) SQUARE CUT ON INLET 400' +/- SOUTH OF BELT LINE ROAD, EAST SIDE OF LANDMARK BLVD. ELEV. = 638.13



9/28/2010 10:20:01 AM ah1257 HALFF I:\27006\27431\Cadd\C301-WW-27431.dgn Sheet 3E_KIP_Full.plt

CITY OF DALLAS
BLOCK 8166
ARMSTRONG ADDITION
VOL 79050 PG 1857

LOT 1, BLOCK 1
DASEKE ADDITION
2.071 ACRES
VOL. 97041 PG. 2221

JEFFERSON OAKS ADDITION
PHASE TWO
VOL 94027 PG 6910