

Old Town LeBlond  
 8-9-3 Julian

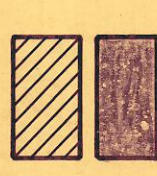
ST. LOUIS & SOUTHWESTERN RAILWAY

BROADWAY STREET

Moses & Cline



Proposed Easement Dedication  
 Proposed R.O.W. Dedication



**PROGRESS PRINT**  
 Not For Construction

Town of Addison  
 Dallas County, Texas  
 OLD TOWN

GINN, INC.  
 Consulting Engineers Dallas, Texas

Approved - \_\_\_\_\_  
 Designed - \_\_\_\_\_  
 Checked - \_\_\_\_\_  
 Date - \_\_\_\_\_  
 Job No. - \_\_\_\_\_  
 Sheet - \_\_\_\_\_

**PRELIMINARY**  
 NOT FOR CONSTRUCTION

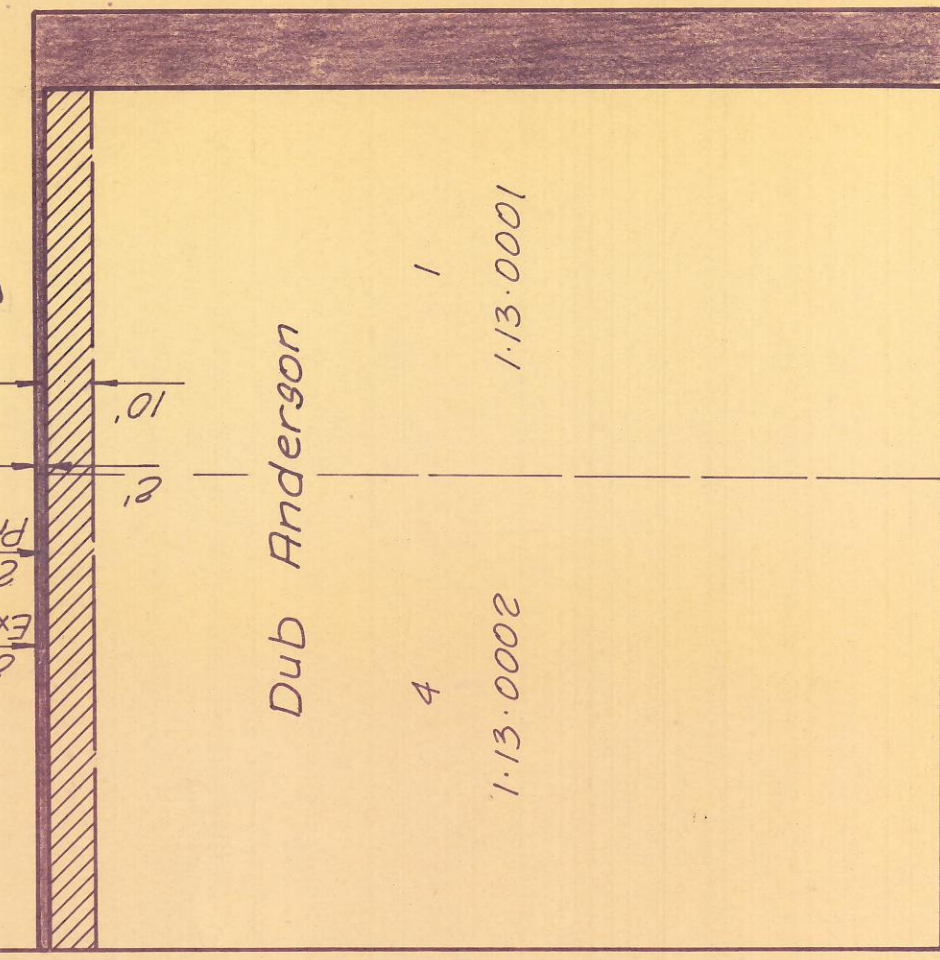
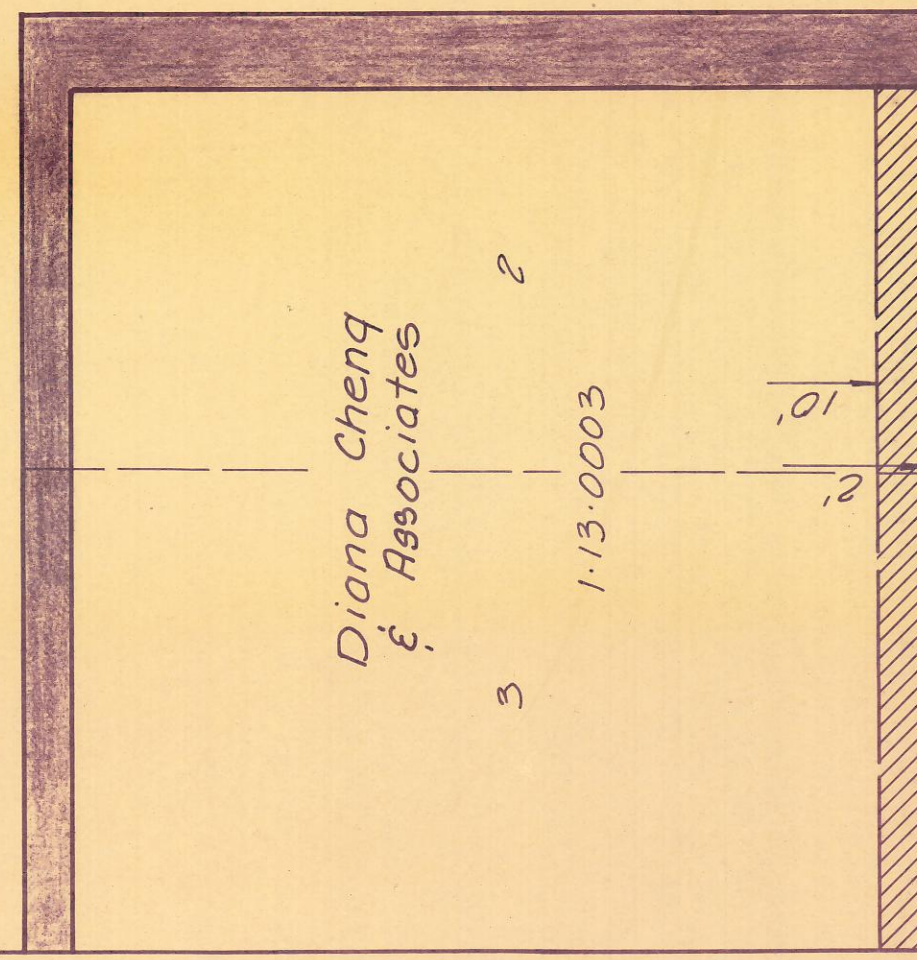
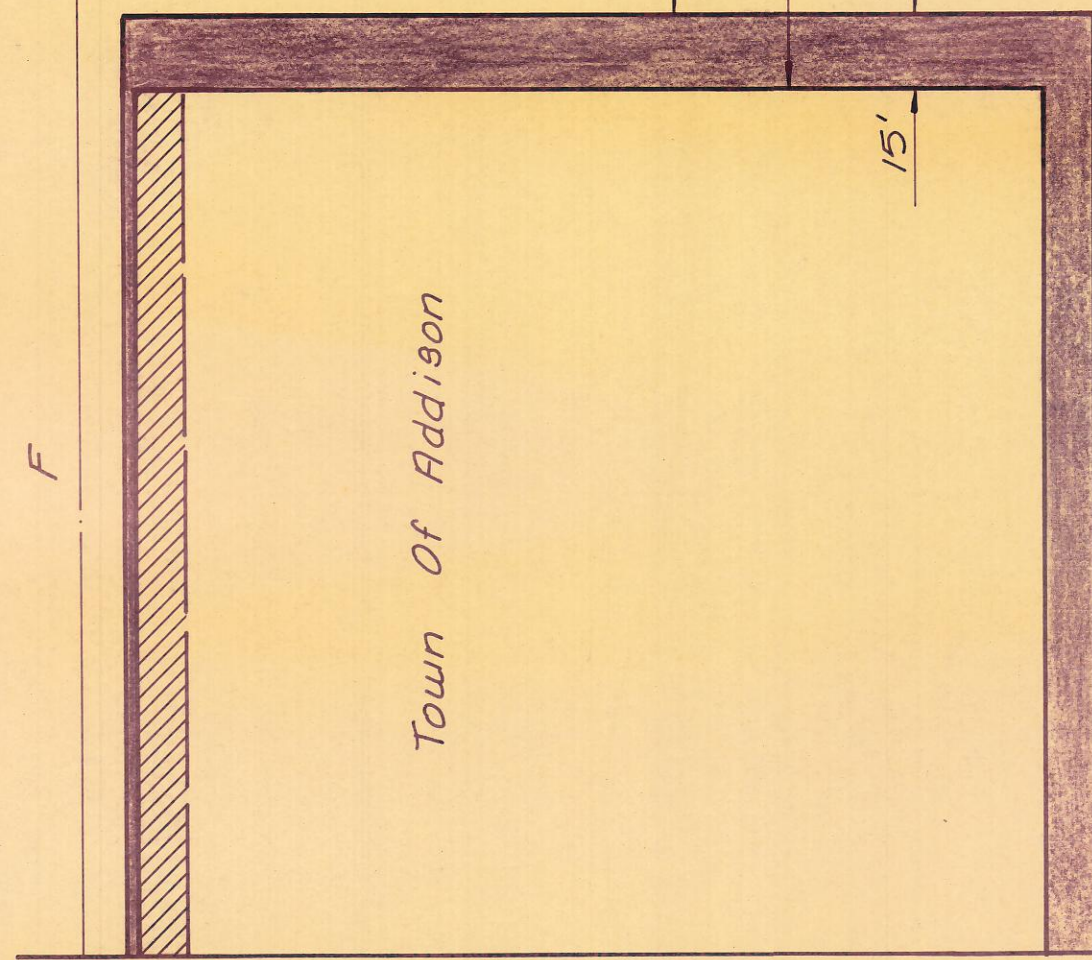
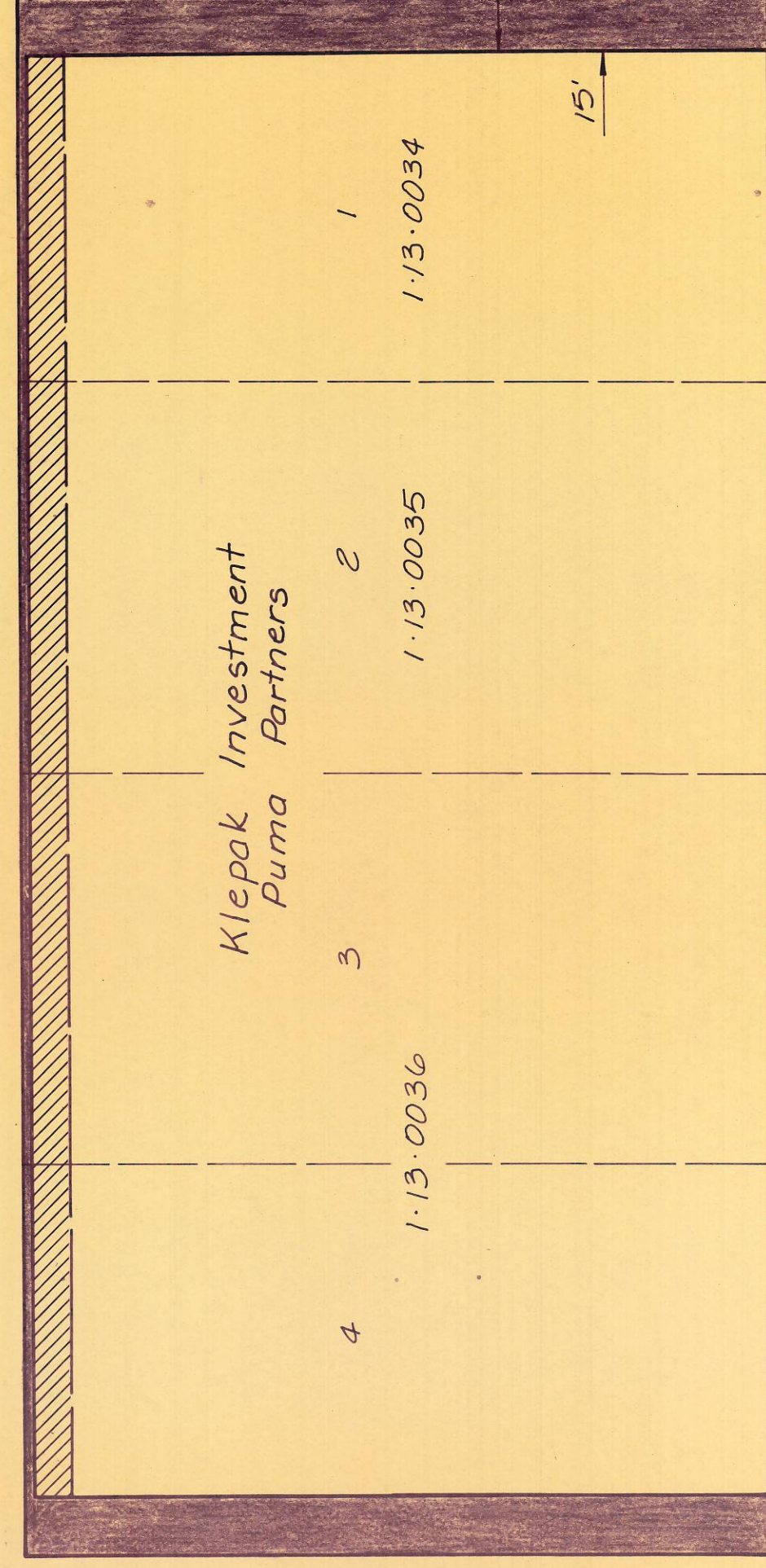
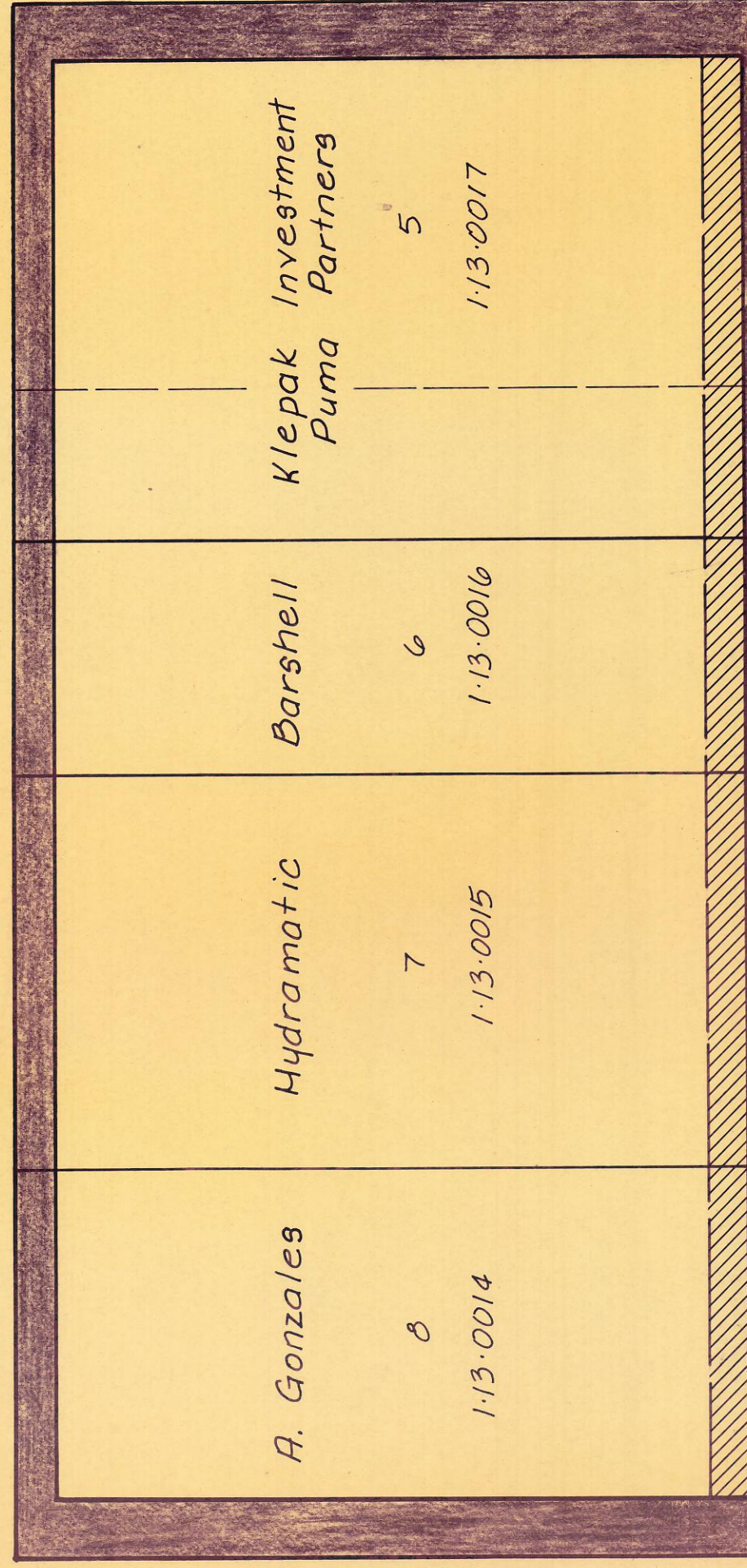
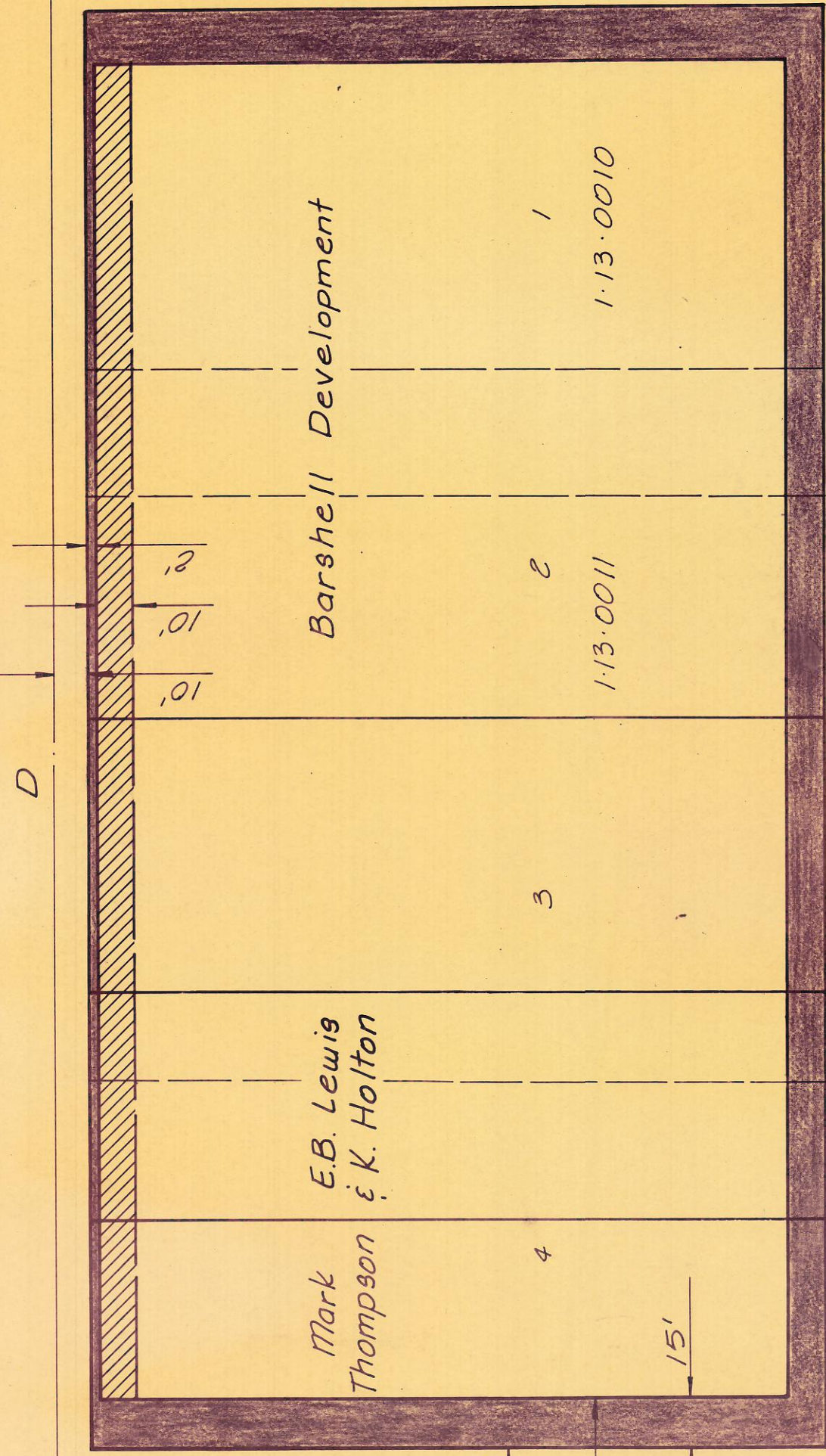
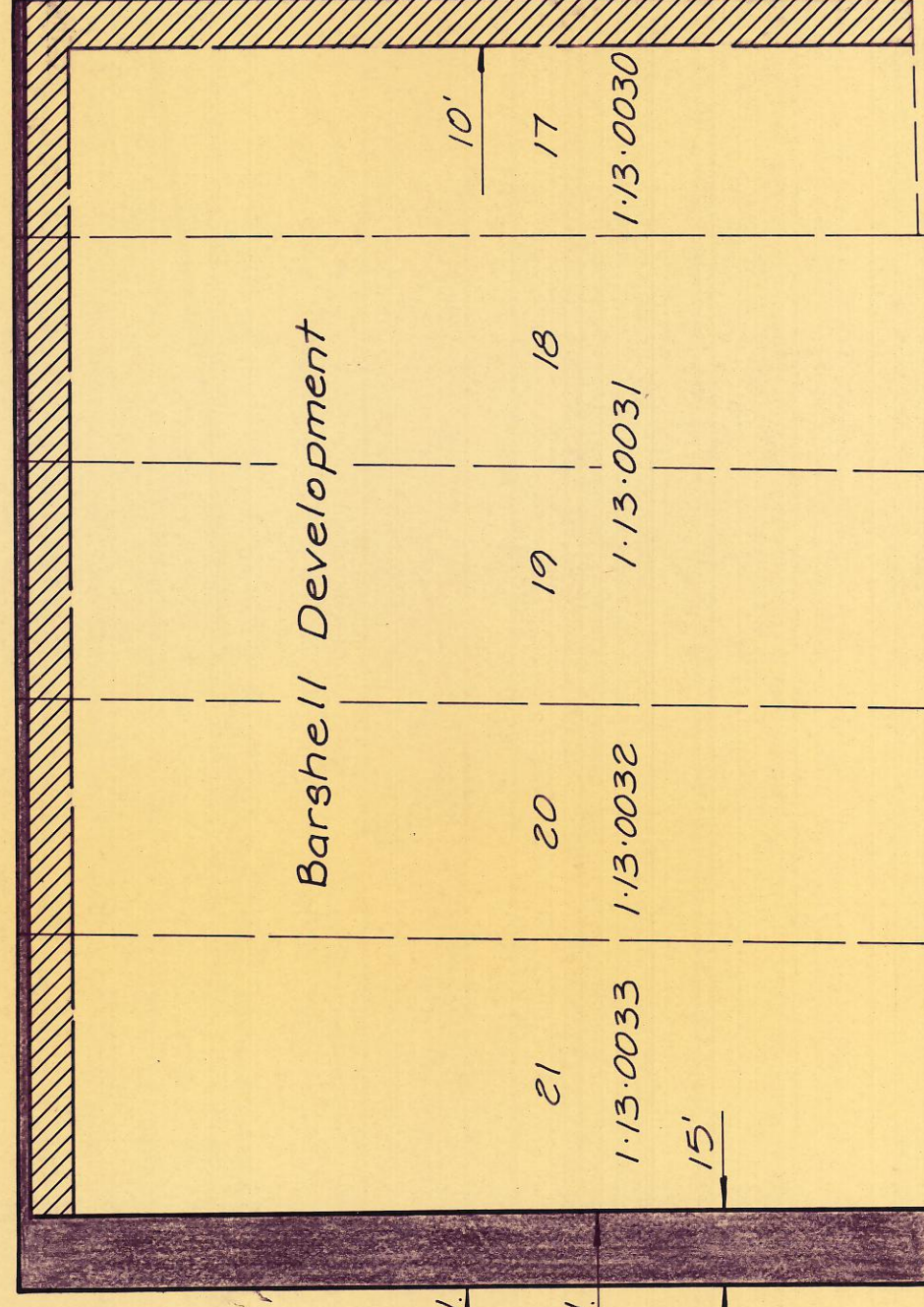
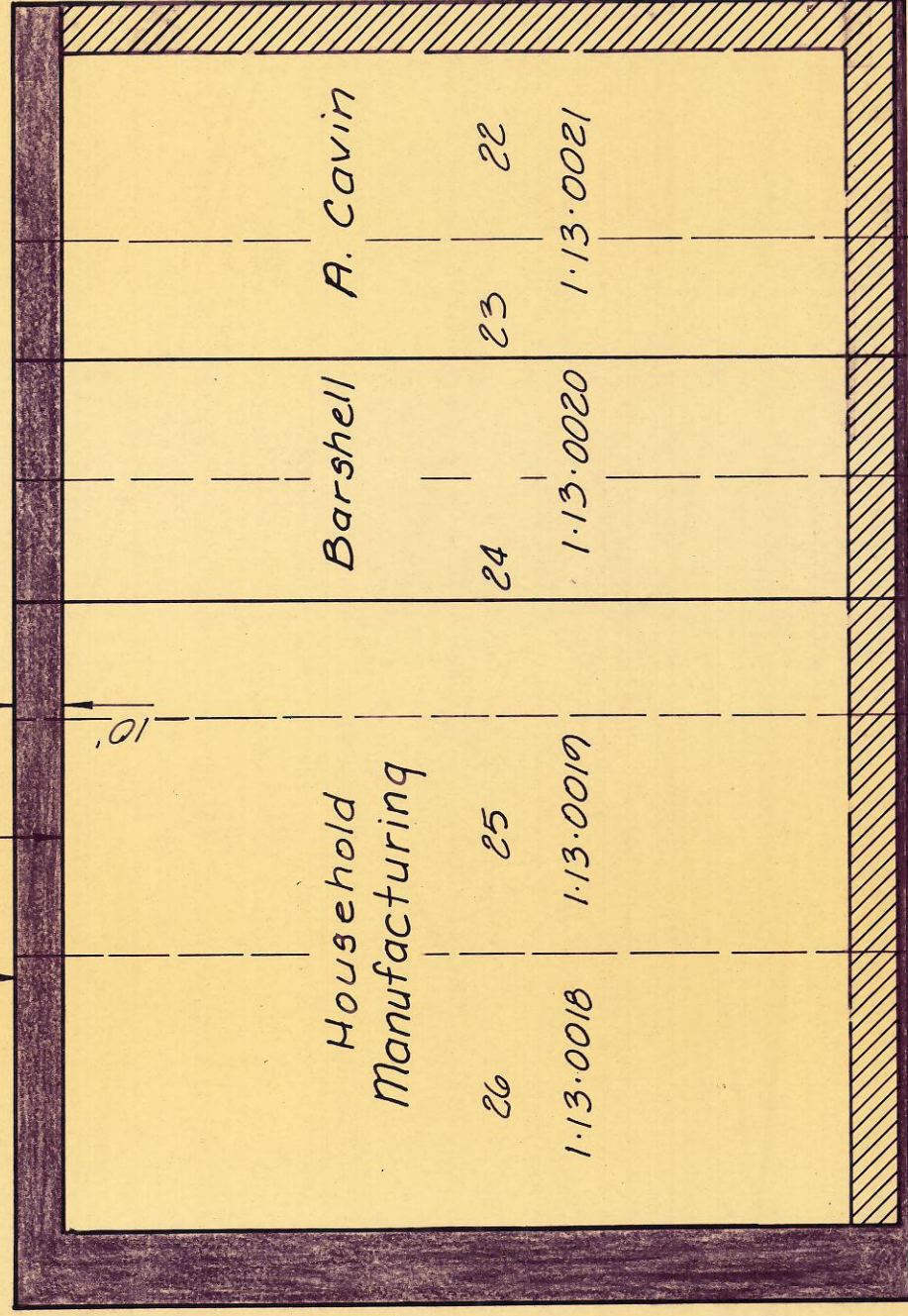
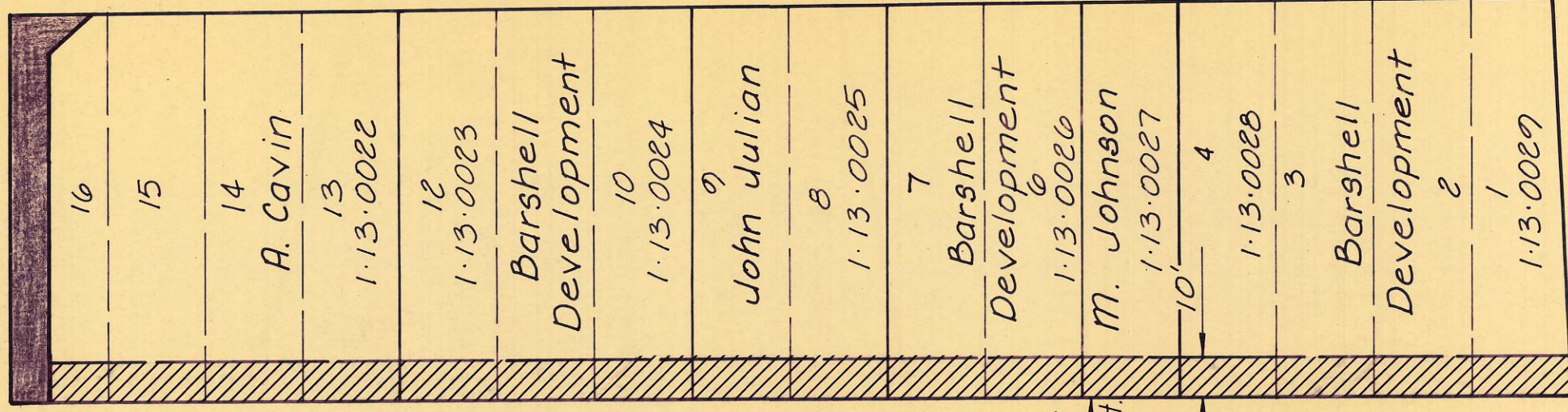
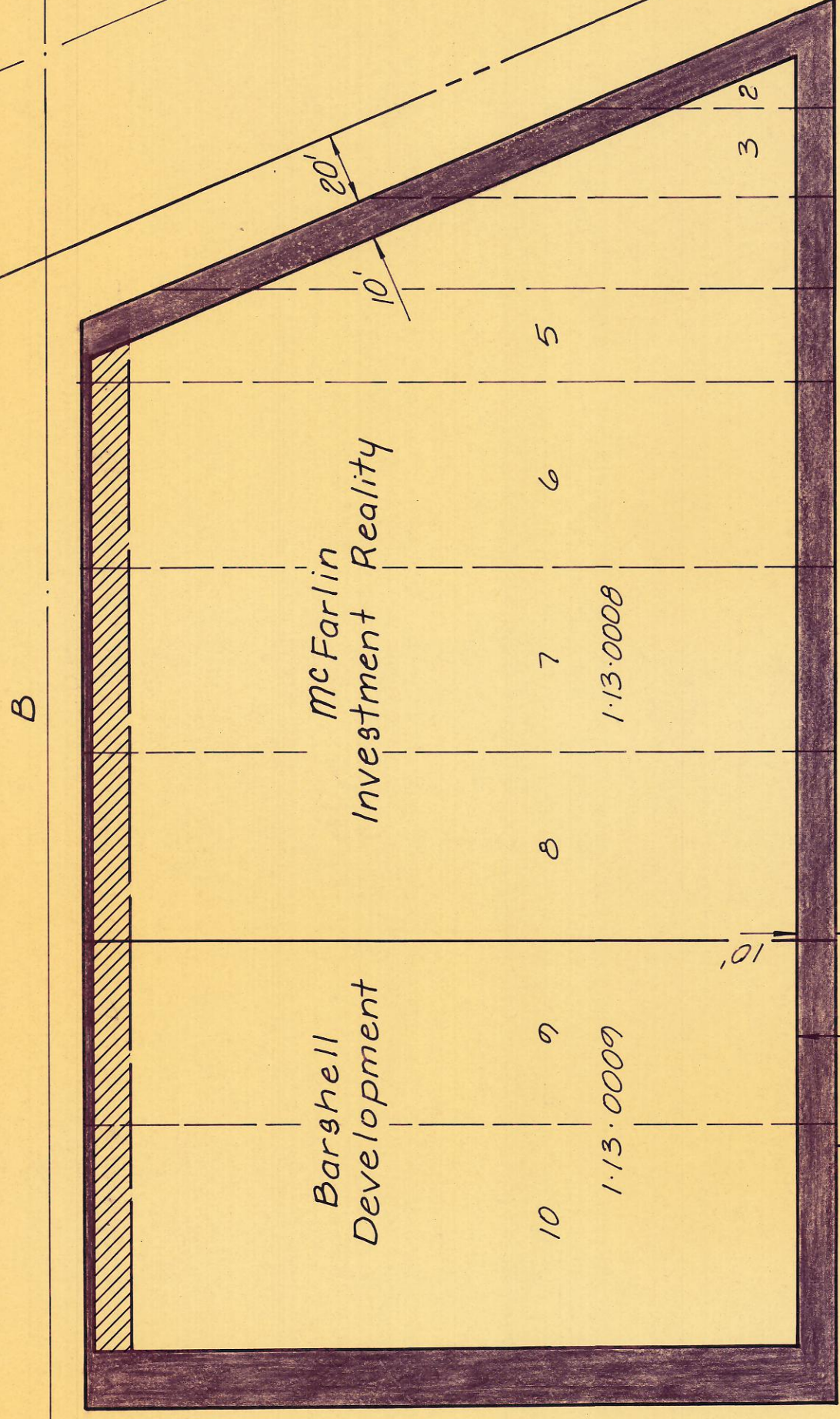




ST. LOUIS & SOUTHWESTERN RAILWAY

BROADWAY STREET

Moses & Cline



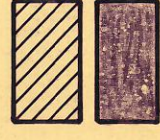
JULIAN AVENUE

CLARA STREET

STREET

MILDRED STREET

ADDISON ROAD



Proposed Easement Dedication  
Proposed R.O.W. Dedication

**PROGRESS PRINT**  
Not For Construction

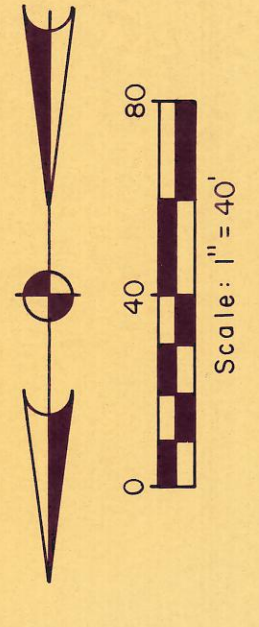
Town of Addison  
Dallas County, Texas  
OLD TOWN

**PRELIMINARY**  
NOT FOR CONSTRUCTION

GINN, INC.  
Dallas, Texas

Consulting Engineers  
Designed -  
Checked -  
Approved -  
Date -  
Scale -  
Job No. -  
Sheet 01

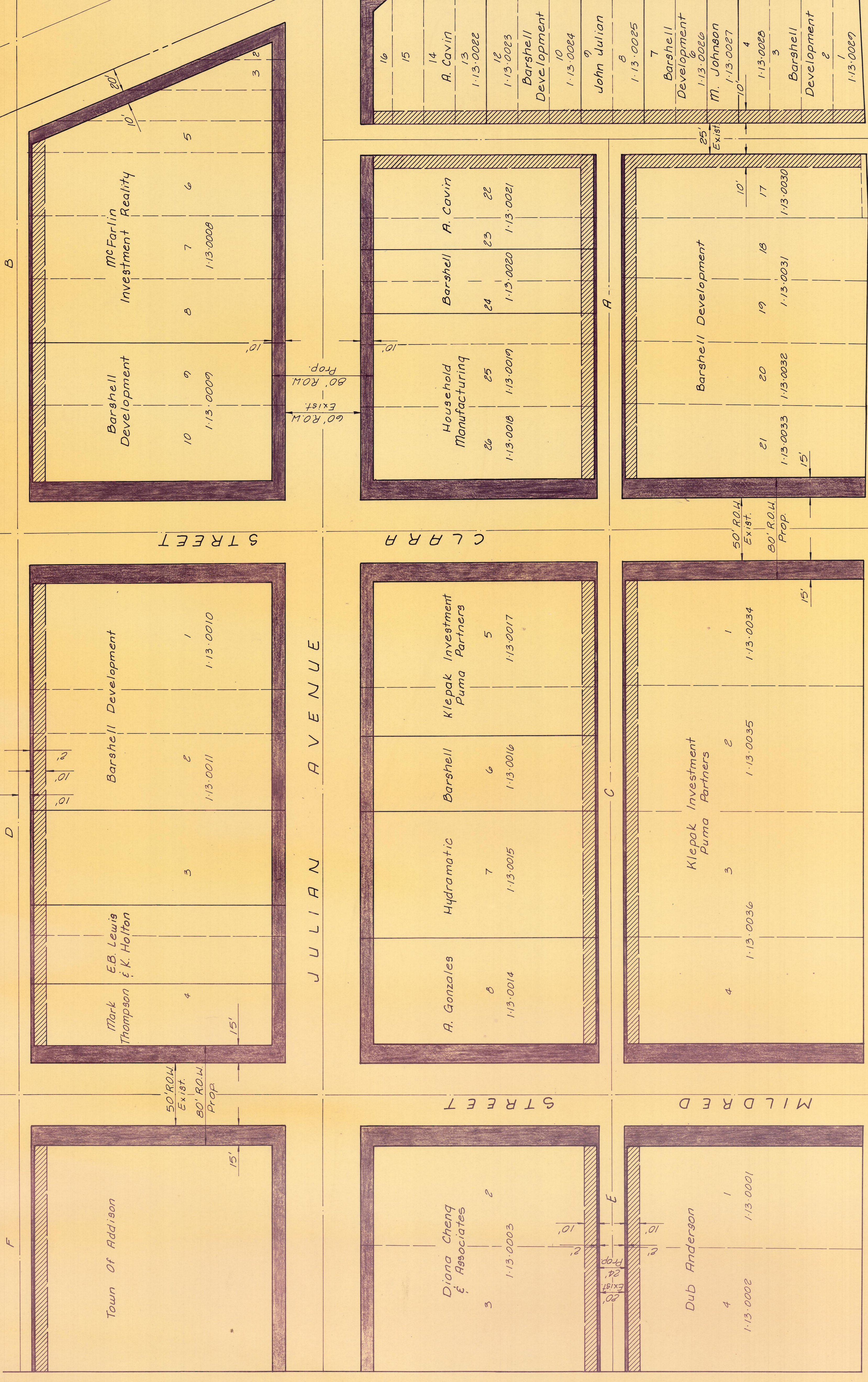




ST. LOUIS & SOUTHWESTERN RAILWAY

BROADWAY STREET

Moses & Cline



ADDISON ROAD

Proposed Easement Dedication  
Proposed R.O.M. Dedication

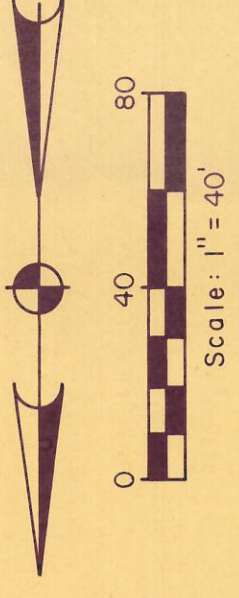
PROGRESS PRINT  
Not For Construction

Town of Addison  
Dallas County, Texas  
OLD TOWN

PRELIMINARY  
NOT FOR CONSTRUCTION

GINN, INC.  
Consulting Engineers  
Dallas, Texas  
Job No. -  
Scale -  
Sheet 01





ST. LOUIS & SOUTHWESTERN RAILWAY

BROADWAY STREET

Moses & Cline

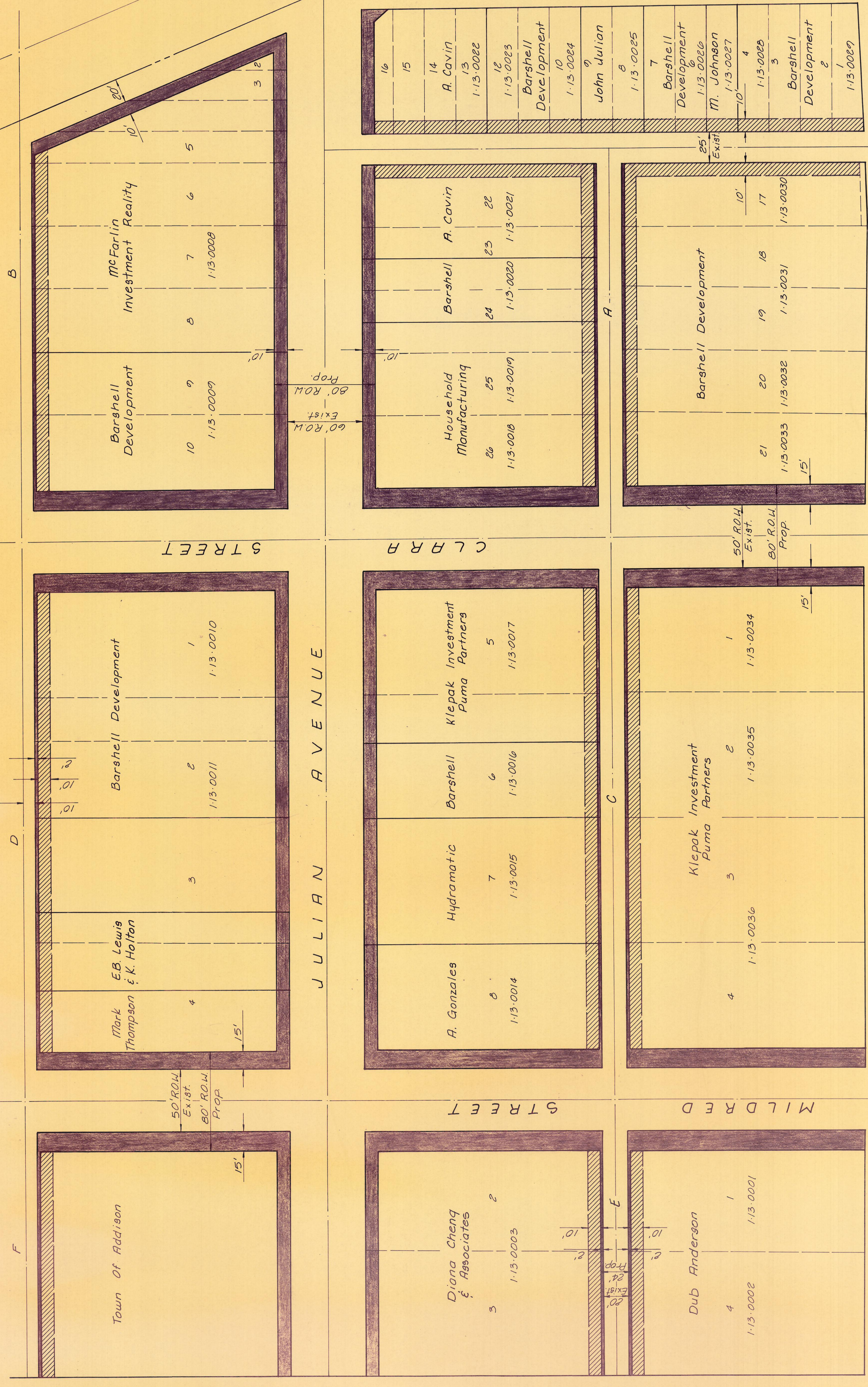
**PROGRESS PRINT**  
Not For Construction

Town of Addison  
Dallas County, Texas  
OLD TOWN

**PRELIMINARY**  
NOT FOR CONSTRUCTION

Proposed Easement Dedication  
Proposed R.O.W. Dedication

GINN, INC.  
Dallas, Texas  
Consulting Engineers  
Job No. -  
Scale -  
Sheet 01



ADDISON ROAD

STREET

CLARA

STREET

MILDRED

JULIAN AVENUE

C

E

B

D

F

Barshell Development  
10  
1-13-0009

McFarlin Reality  
5  
1-13-0008

Barshell Development  
2  
1-13-0011

E.B. Lewis & K. Holton  
3  
1-13-0010

Mark Thompson  
4  
1-13-0014

Town Of Addison  
3  
1-13-0003

Household Manufacturing  
26  
1-13-0018

Barshell  
24  
1-13-0020

A. Cavin  
25  
1-13-0021

Klepak Investment  
5  
1-13-0017

Barshell  
6  
1-13-0016

Hydramatic  
7  
1-13-0015

A. Gonzales  
8  
1-13-0014

Diana Cheng & Associates  
2  
1-13-0003

Barshell Development  
19  
1-13-0031

Barshell Development  
20  
1-13-0032

Barshell Development  
21  
1-13-0033

Klepak Investment  
3  
1-13-0036

Klepak Investment  
4  
1-13-0035

Klepak Investment  
1  
1-13-0034

Dub Anderson  
4  
1-13-0002

Dub Anderson  
1  
1-13-0001

Barshell Development  
16  
1-13-0022

Barshell Development  
15  
1-13-0023

Barshell Development  
14  
1-13-0024

John Julian  
10  
1-13-0024

Barshell Development  
8  
1-13-0025

Barshell Development  
7  
1-13-0026

M. Johnson  
6  
1-13-0027

Barshell Development  
4  
1-13-0028

Barshell Development  
3  
1-13-0029

Barshell Development  
2  
1-13-0029

60' R.O.W. Exist.

80' R.O.W. Prop.

50' R.O.W. Exist.

80' R.O.W. Prop.

50' R.O.W. Exist.

80' R.O.W. Prop.

20' R.O.W. Exist.

24' R.O.W. Prop.