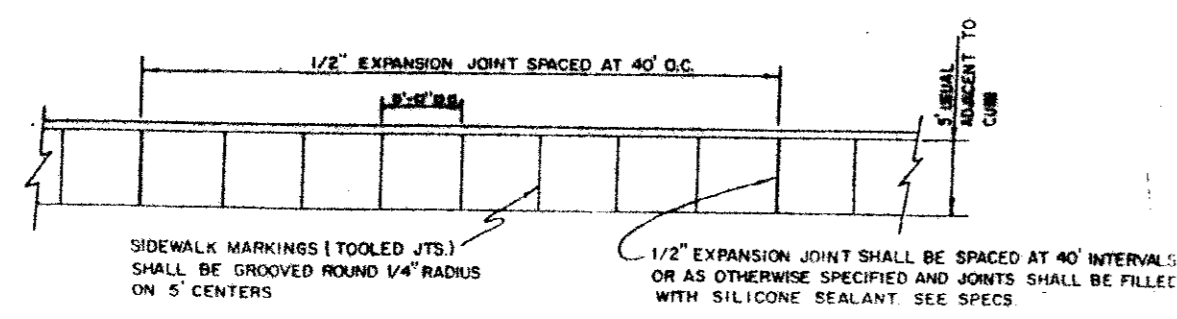
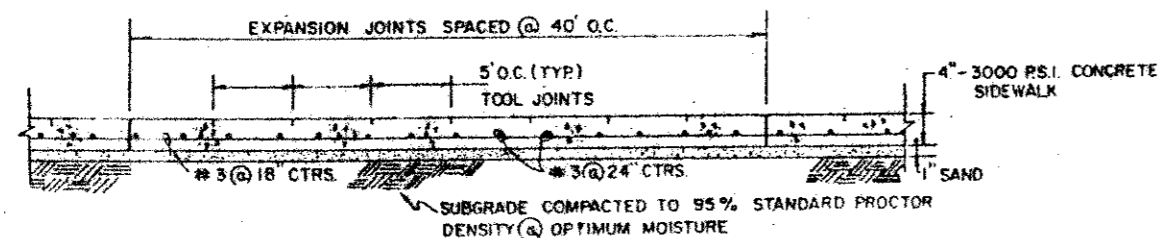


CONCRETE SIDEWALK DETAIL

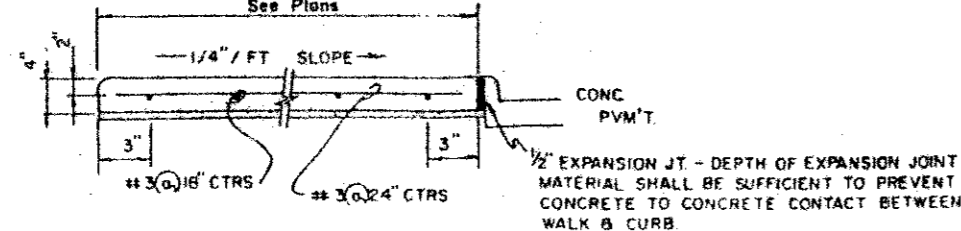
- GENERAL NOTES**
- Reinforced concrete sidewalk shall be 5 or 7 feet wide, a minimum of four (4) inches thick and shall be 3000 psi at 28 days (5 sack mix). Unless noted otherwise.
 - Channel shall exposed surface of concrete (2x2) min.
 - All bar dimensions are given as center to center of bars and are located as shown.
 - All reinforcing steel shall be No. 3 on 18 inch centers longitudinally, 24 inch centers transversely and shall conform to the requirements of ASTM A-615, Grade 60.
 - 1" thick min. fine, washed sand cushion shall be free from organic materials or clays and shall be used for grade adjustment.
 - Subgrade shall be compacted to a density not less than 95% at optimum moisture.
 - Tooled joints (contraction joints) shall be on five (5) foot centers and shall be round one-fourth (1/4) inch radius.
 - A one-half (1/2) inch expansion joint shall be placed every eight (8) foot centers, and where works abut old work, or where new work is constructed adjacent to other concrete, a one-inch expansion joint shall be used where sidewalk is adjacent to curb, the expansion joint shall be made of pre-molded bituminous expansion joint filler or redwood with silicone sealant. See Spec.
 - Sidewalk shall be finished by lightly brooming surface transversely to direction of main traffic or where adjacent sidewalks differ from this standard, new sidewalks shall conform to adjacent sidewalk (e.g. exposed aggregate).
 - Cross slope walk one-fourth (1/4) inch per foot towards curb or as shown on the drawings to provide drainage.



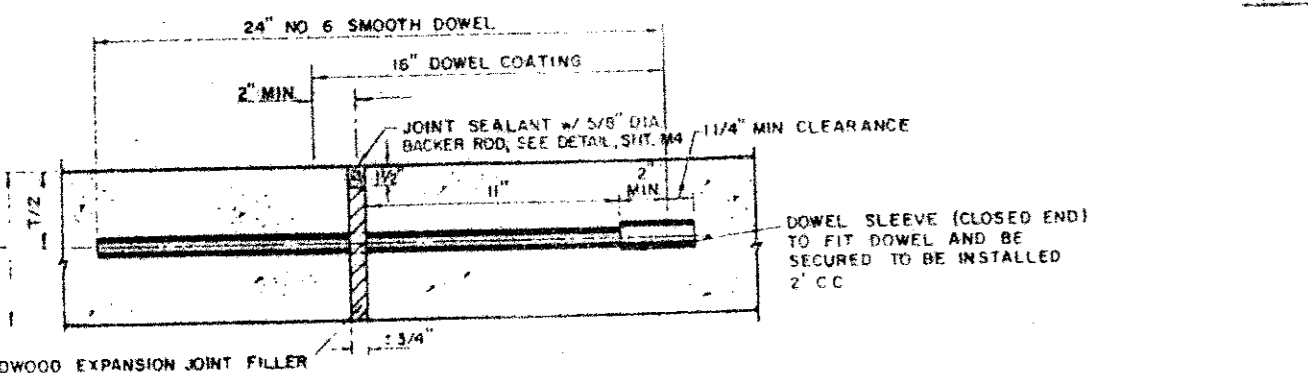
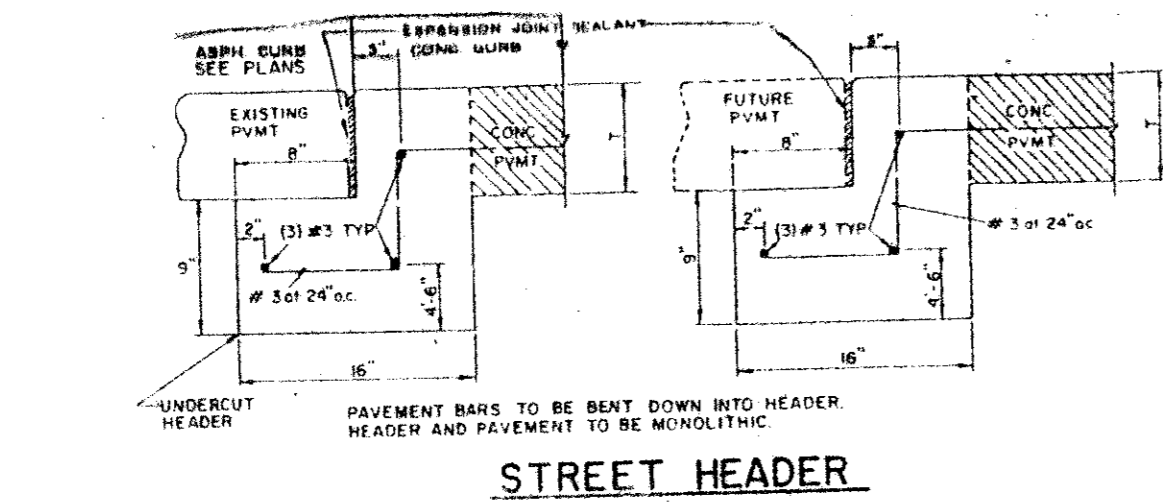
PLAN



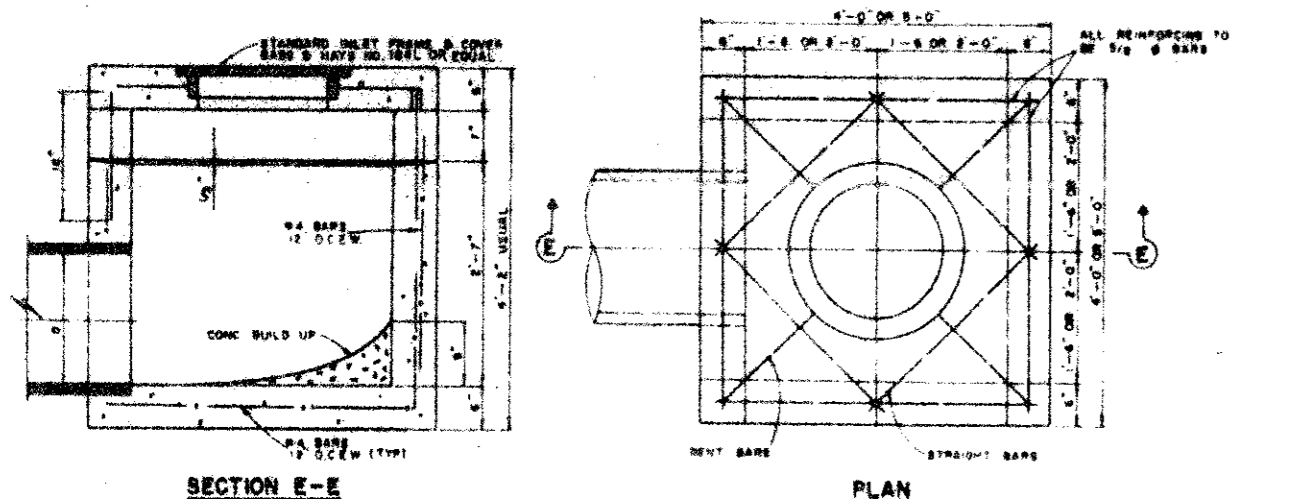
SIDE ELEVATION



EXPANSION JOINT DETAIL

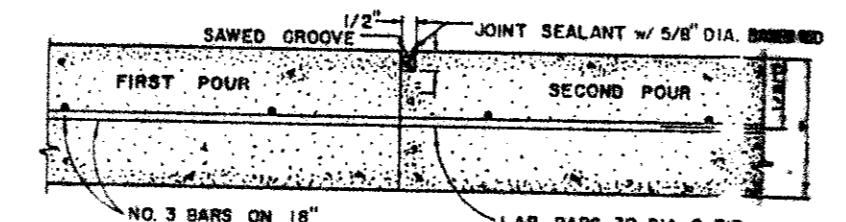
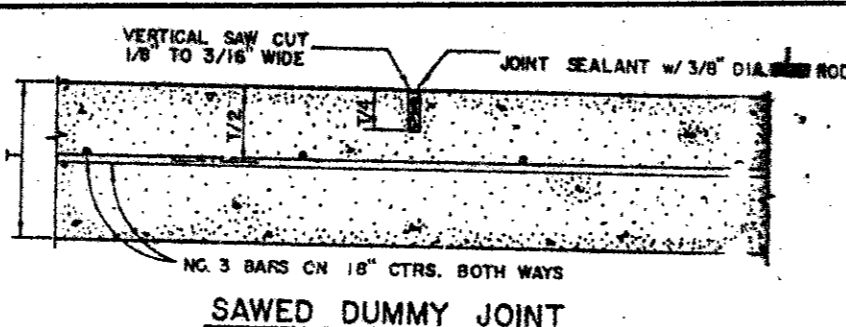


SECTION E-E

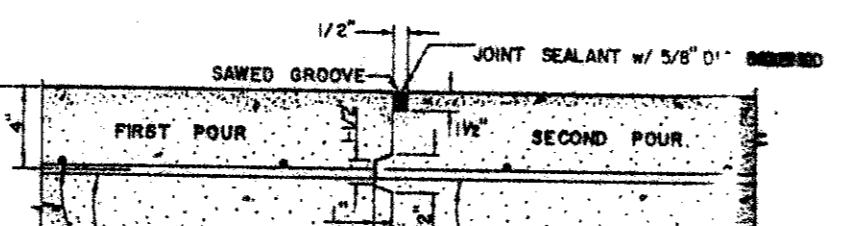


PLAN

SECTION E-E



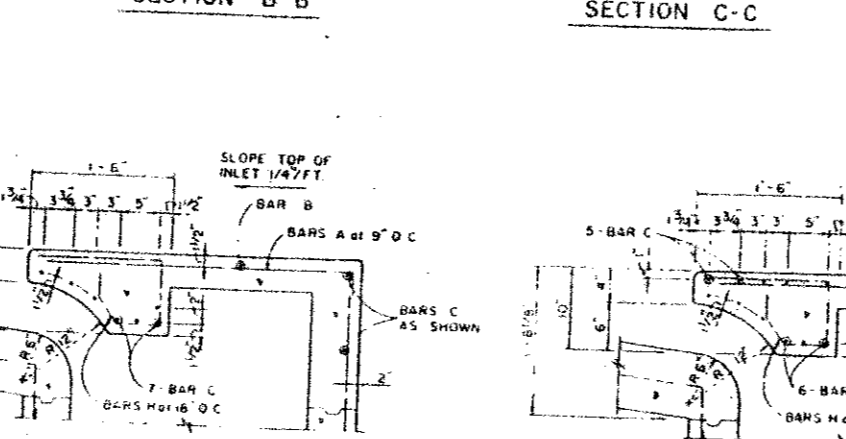
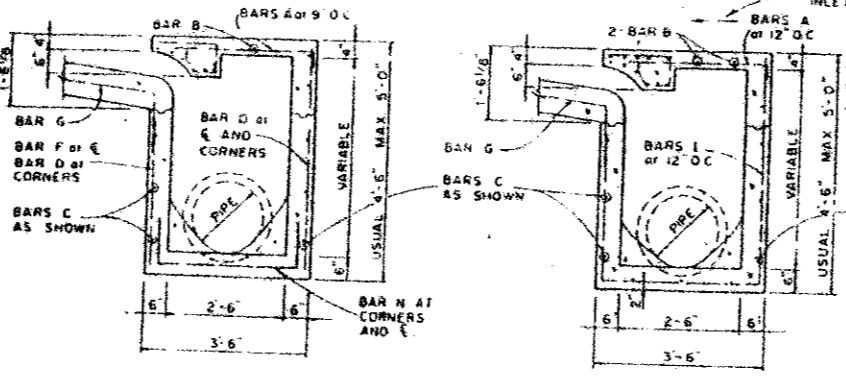
CONSTRUCTION JOINT FOR 8 INCH PAVEMENT



CONSTRUCTION JOINT FOR 6 INCH PAVEMENT

GENERAL NOTES

- GENERAL**
PAVEMENT THICKNESS FOR STREETS SHALL BE AS SPECIFIED BELOW IN SPECIAL NOTES.
- STANDARD SPECIFICATIONS**
REINFORCED CONCRETE PAVEMENTS
1. ALL CURBS SHALL BE PLACED INTEGRAL WITH PAVEMENT.
2. CURBS SHALL MEET THE SAME COMPRESSIVE STRENGTH AS SPECIFIED FOR THE CONCRETE PAVEMENT.
3. DETAIL AND ARRANGEMENT OF JOINTS, ALL TYPES, SHALL BE AS SHOWN ON THE STANDARD CONSTRUCTION DETAILS, AS APPROVED BY ENGINEER.
4. BAR LAPS SHALL BE 30 DIAMETERS.
- BAR CHAIRS OR AN APPROVED SUPPORTING DEVICE SHALL BE FURNISHED.**

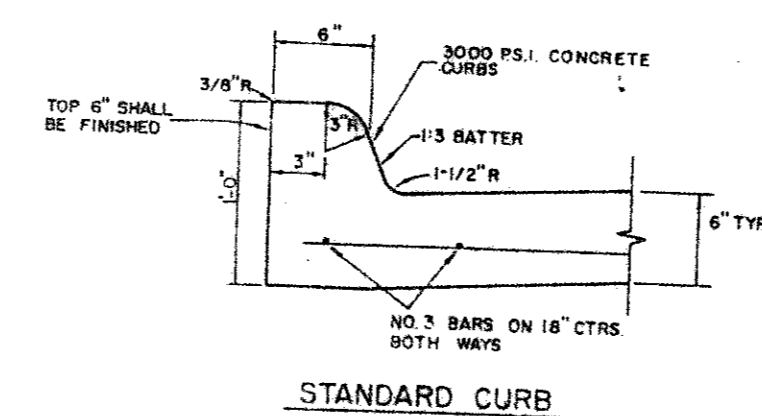


SECTION C-C

SECTION C-C

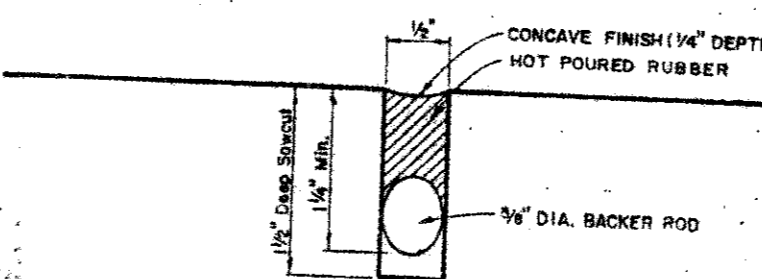
4, 6, AND 8 FOOT INLETS

10, 12, AND 14 FOOT INLETS



REINFORCED CONCRETE PAVEMENT

- ALL REINFORCING BARS SHALL BE NO. 3 TRANSVERSE BARS TO BE SPACED ON 1'-6" CENTERS; LONGITUDINAL BARS TO BE SPACED ON 1'-6" EXCEPT UNIMPROVED STREETS - PROVIDE 4" DELT - SEE YELLOW & BUTTON P-17-Y PATTERNS TO BE ESTABLISHED BY ENGINEER. SEE DETAIL SHEET
- SAWED LONGITUDINAL DUMMY JOINT
 - CONSTRUCTION JOINT (FULL WIDTH P.V.M.T IS ALLOWED WHERE APPROVED BY ENGINEER)
 - FINISH SHALL BE TRANSVERSE WITH TRAFFIC LANES AND SHALL BE STEEL TINED BROOM FINISH.

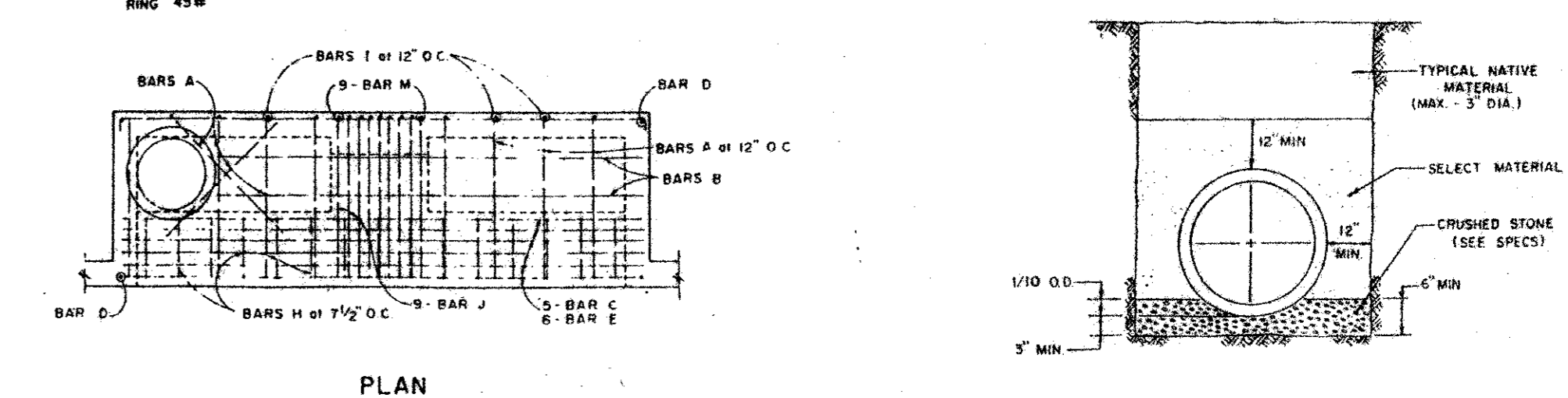
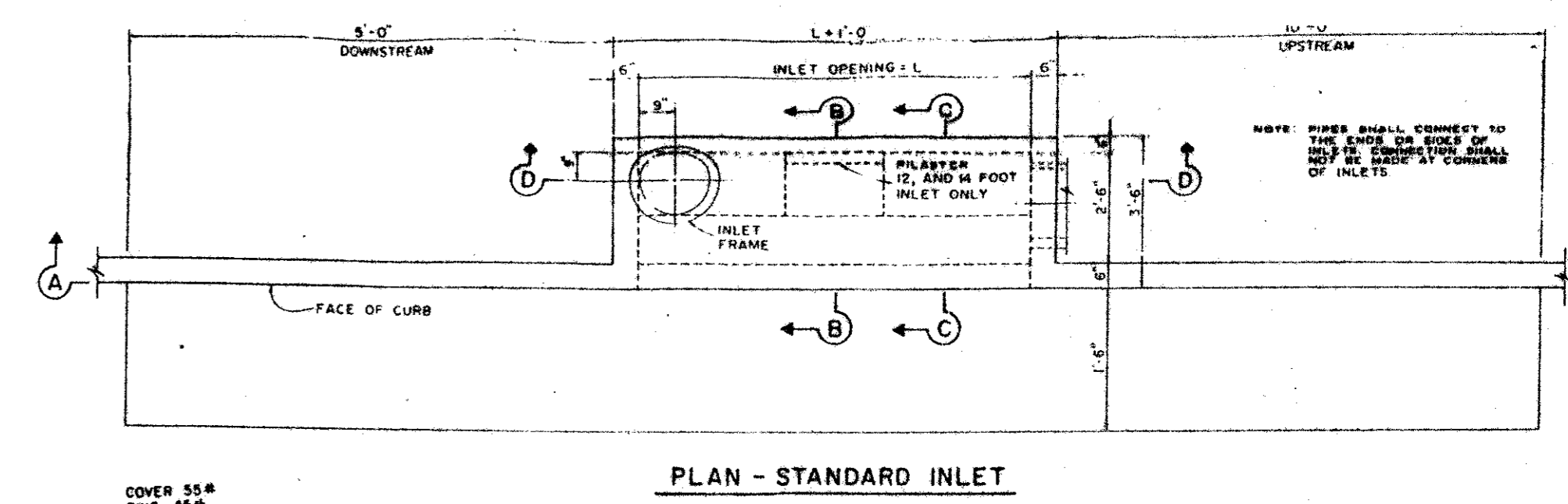
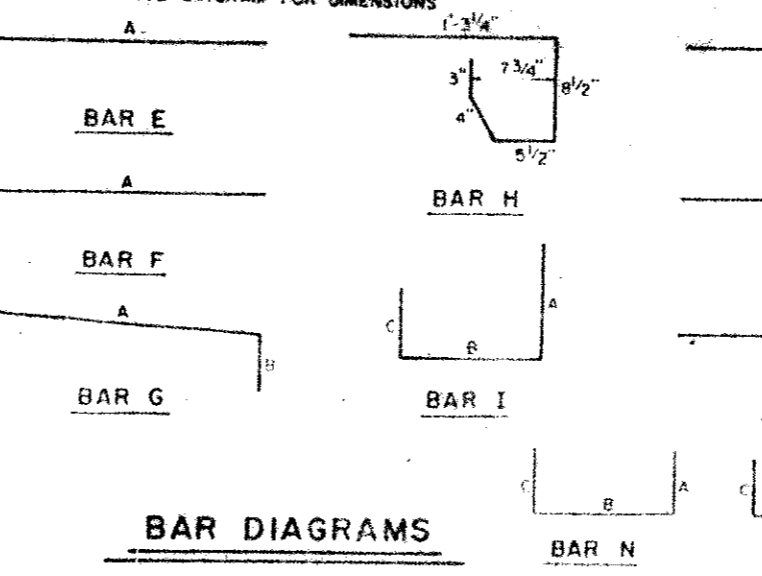


TYPICAL JOINT DETAIL

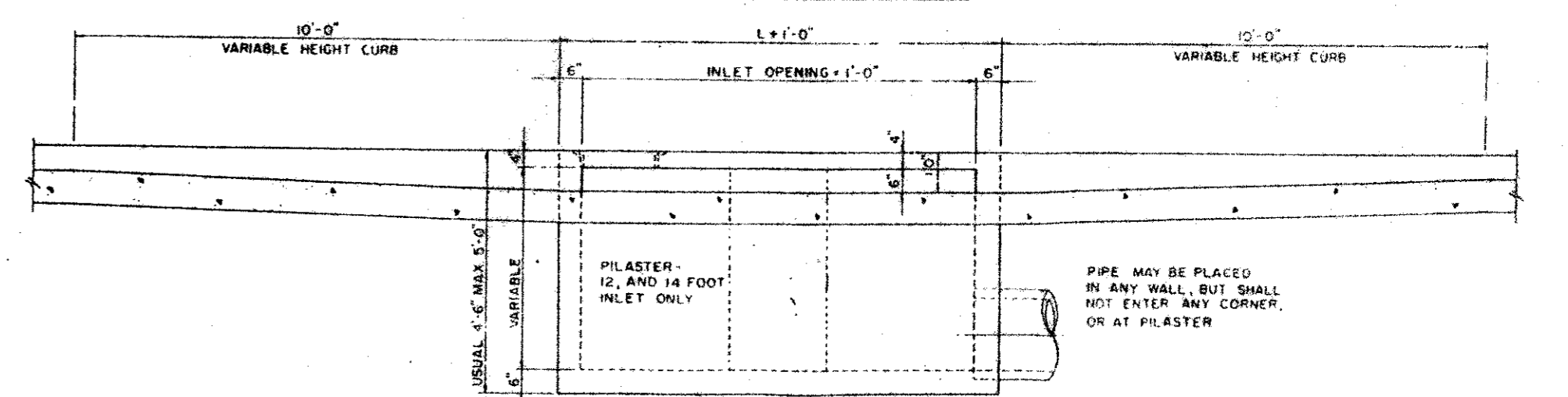
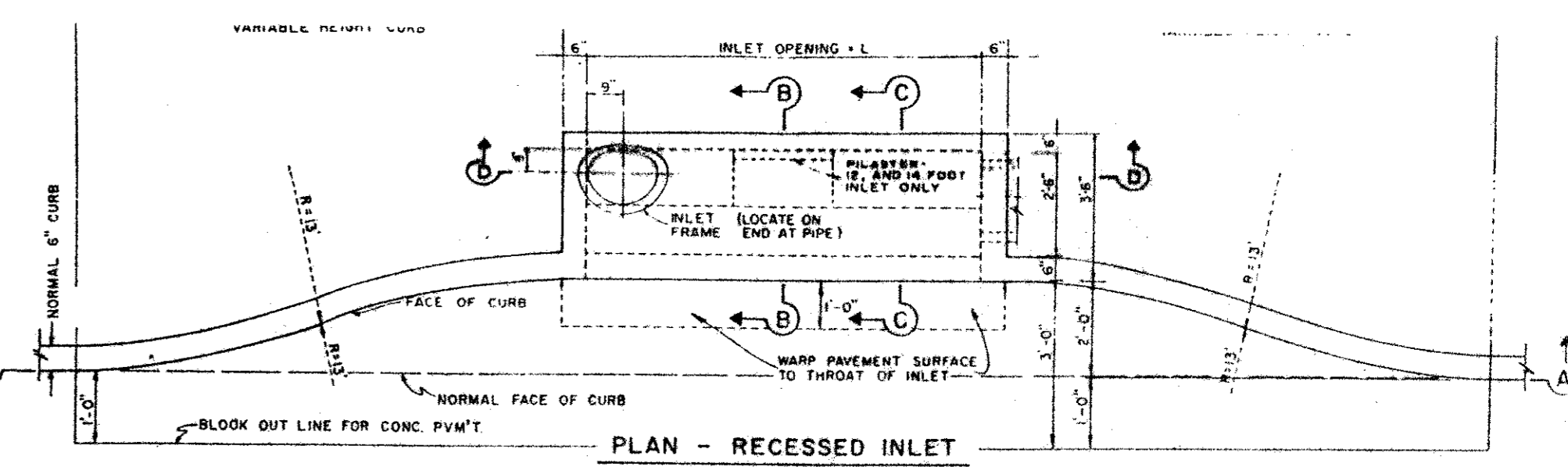
REINFORCING STEEL SCHEDULE

DIMENSIONS SHOWN ARE FOR UNIMPROVED SELECTS

INLET	BAR TYPE	BAR DIA. (1/2" IN)	REG'D	A	B	C
4	A	3	6	3'-2"	2'	2'
	B	3	9	6'-0"		
	C	4	15	4'-8"		
	D	4	9	4'-8"		
	E	3	5	2'-0"		
	F	4	9	3'-2"		
	G	3	5	2'-0"		
	H	3	8	4'-8"		
	I	3	9	3'-2"		
	J	4	15	6'-0"		
	K	3	12	3'-2"		
	L	4	16	10'-0"		
	M	3	5	2'-0"		
	N	3	5	3'-2"		
	O	4	15	6'-0"		
	P	4	9	6'-0"		
	Q	3	5	2'-0"		
	R	3	8	4'-8"		
	S	3	15	3'-2"		
	T	4	8	4'-8"		
	U	3	12	3'-2"		
	V	3	2	10'-0"		
	W	4	16	10'-0"		
	X	4	4	4'-8"		
	Y	3	8	4'-8"		
	Z	3	9	3'-2"		
	AA	4	5	2'-3"		
	AB	5	9	4'-3"		
	AC	5	9	4'-3"		
	AD	4	14	3'-2"		
	AE	4	16	14'-0"		
	AF	4	4	4'-8"		
	AG	3	5	2'-0"		
	AH	3	21	4'-8"		
	AI	3	12	4'-8"		
	AJ	4	5	2'-3"		
	AK	3	9	3'-2"		
	AL	5	9	4'-3"		
	AM	5	9	4'-3"		



SECTION A-A - RECESSED AND STANDARD INLETS



SECTION A-A - RECESSED AND STANDARD INLETS

4, 6, 8, 10, 12, AND 14 FOOT INLETS

TOWN OF ADDISON
PAVING, DRAINAGE AND MISC.
GENERAL NOTES
CELESTIAL PLACE
ADDISON / DALLAS, TEXAS

FOR :
ALLEGIANCE GROUP, INC.
8080 N. CENTRAL EXPY.
DALLAS, TEXAS 75206

BY :
DAL-TECH ENGINEERING INC
11020 AUDELIA RD., SUITE C207
DALLAS, TEXAS 75342
PH. (214)553-5500