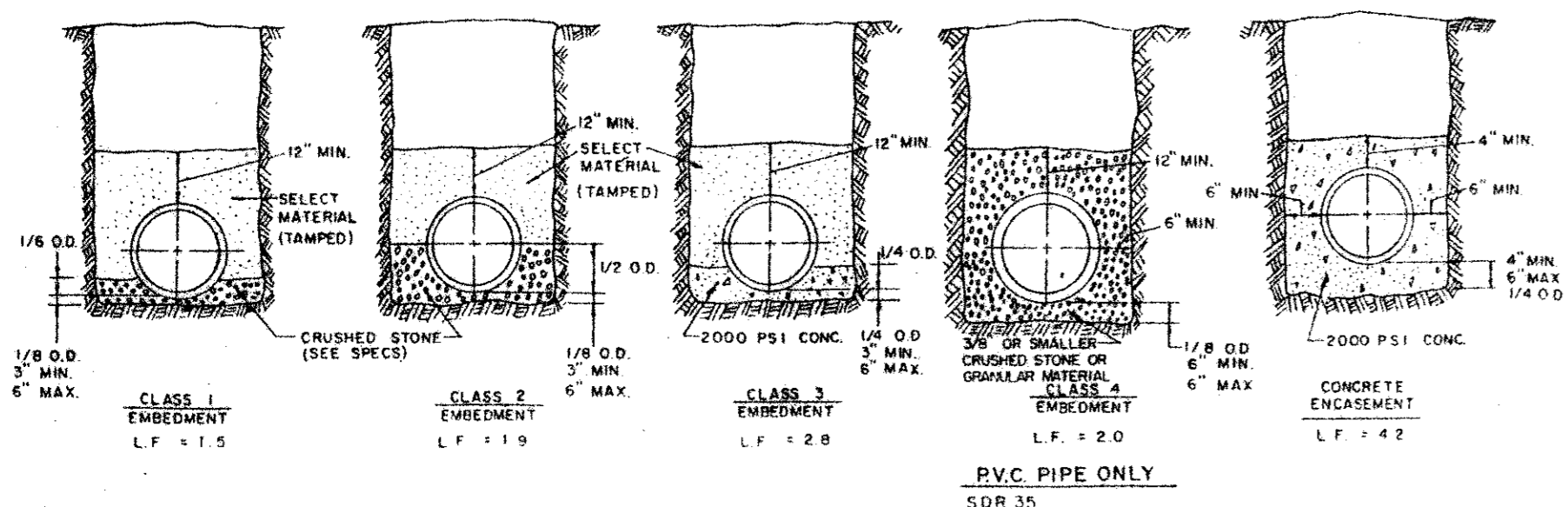


**SANITARY SEWER**

TYPICAL NATIVE MATERIAL COMPACTED TO:  
95% OPTIMUM MOISTURE 0 TO +3% UNDER FLOVEMENT  
95% OPTIMUM MOISTURE 0 TO +3% OUTSIDE CURB LINES  
SETTING IS NOT ALLOWED  
BACKFILL TO BE COMPACTED IN 6" LIFTS  
TYPICAL NATIVE MATERIAL (MAX 3" DIA)

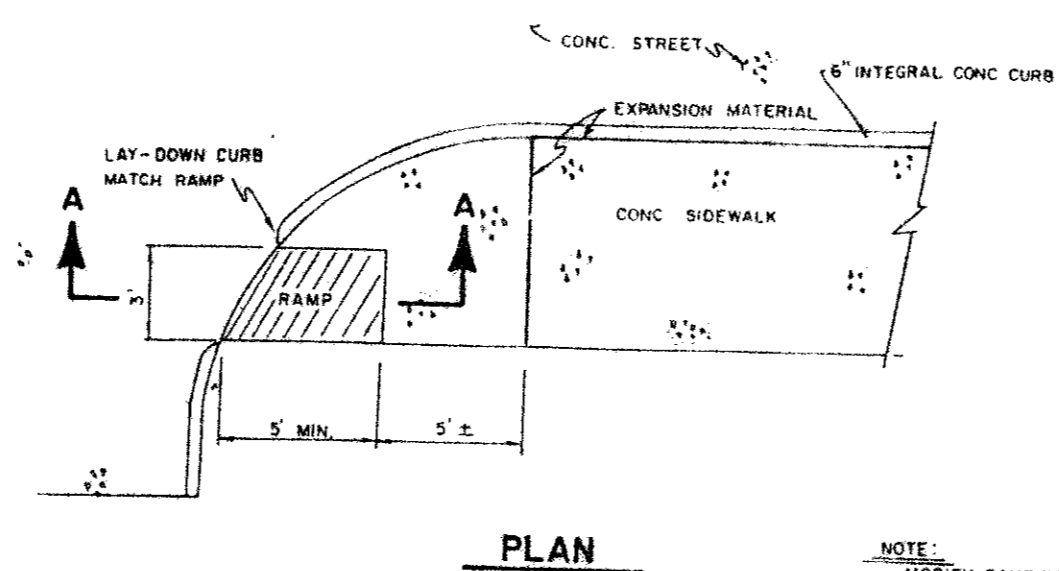


**EMBEDMENT DETAILS FOR SANITARY SEWER**

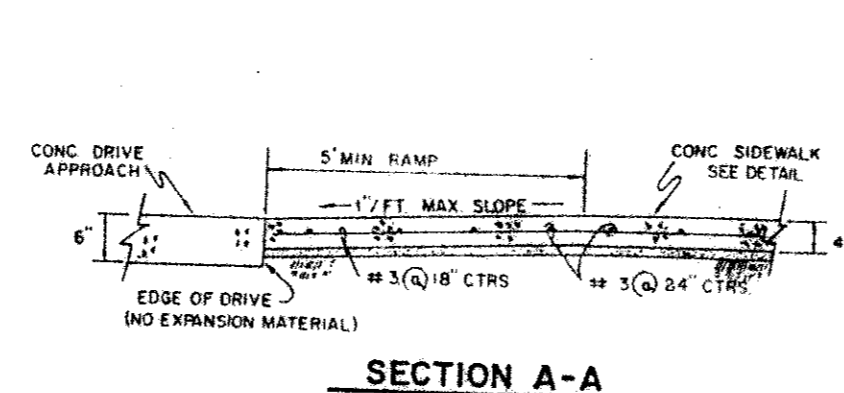
TABLE OF QUANTITIES OF 2000 PSI CONCRETE, GRAVEL OR CRUSHED STONE IN CUBIC YARDS PER 100 LINEAR FEET FOR EACH CLASS EMBEDMENT

TABLE OF QUANTITIES PER 100 LINEAR FEET REINFORCED CONCRETE PIPE							
SIZE OF PIPE IN INCHES I.D.	O.D. OF PIPE IN INCHES	TRENCH WIDTH IN INCHES	TRENCH WIDTH IN FEET	CLASS 1 EMBEDMENT CRUSHED STONE	CLASS 2 EMBEDMENT CRUSHED STONE	CLASS 3 EMBEDMENT CONCRETE	CONCRETE ENCASEMENT
12	16.00	32	2.67	4.1	6.5	4.8	15.8
15	19.50	36	3.00	4.8	7.8	6.4	19.2
18	23.00	39	3.25	5.7	9.2	8.2	21.2
21	26.50	43	3.58	6.9	11.0	10.2	24.9
24	30.00	46	3.83	8.3	13.1	12.4	28.7
27	33.50	51	4.25	10.3	16.1	14.4	32.8
30	37.00	57	4.75	12.7	20.1	17.0	34.9
33	40.50	62	5.17	15.1	23.8	19.3	39.2
36	44.00	67	5.58	18.0	28.6	22.1	43.8

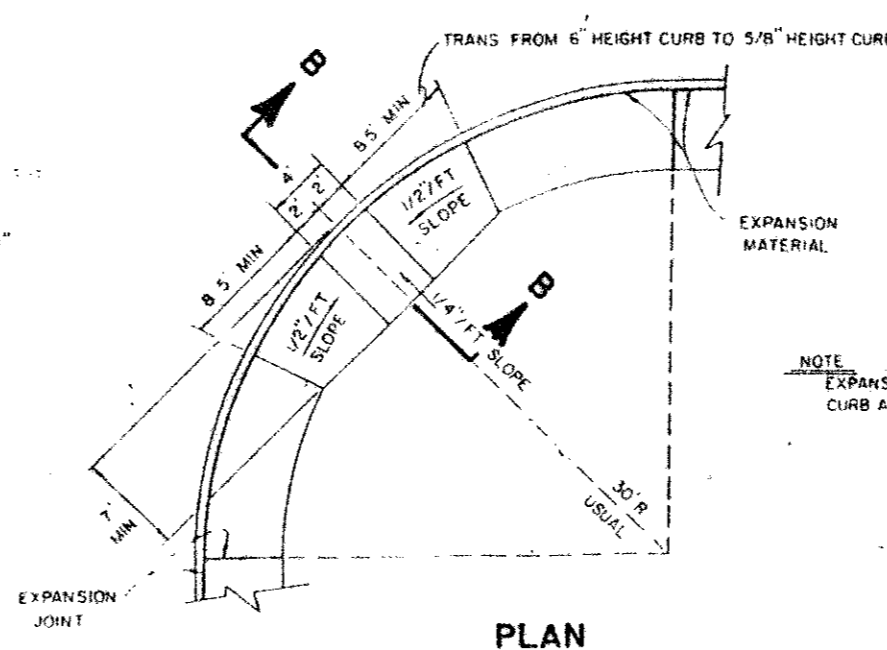
TABLE OF QUANTITIES PER 100 LINEAR FEET PVC PIPE (IN CUBIC YARDS)					
SIZE OF PIPE IN INCHES	O.D. OF PIPE IN INCHES	TRENCH WIDTH IN INCHES	TRENCH WIDTH IN FEET	CLASS 4 EMBEDMENT CRUSHED STONE	CONCRETE ENCASEMENT
6	5.78	24	2.00	8.0	11.7
8	8.16	24	2.00	8.7	12.4
10	10.20	26	2.16	10.2	14.2
12	12.24	28	2.33	11.7	15.9
16	15.30	31	2.61	14.0	18.8
24	21.36	36	3.0	17.0	23.8
30	30.00	42	3.5	20.0	28.6



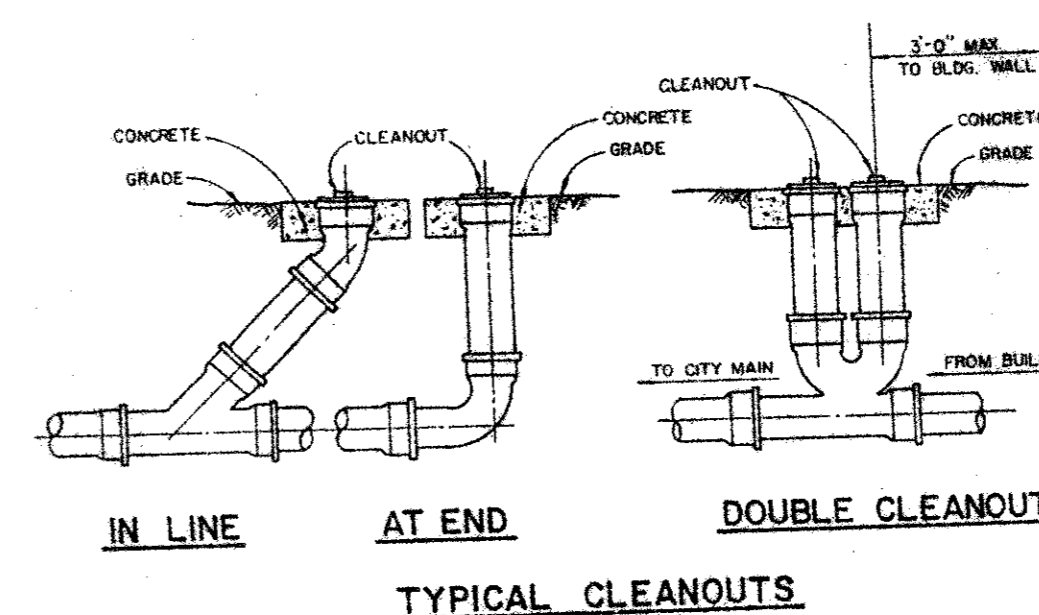
**SECTION B-B**



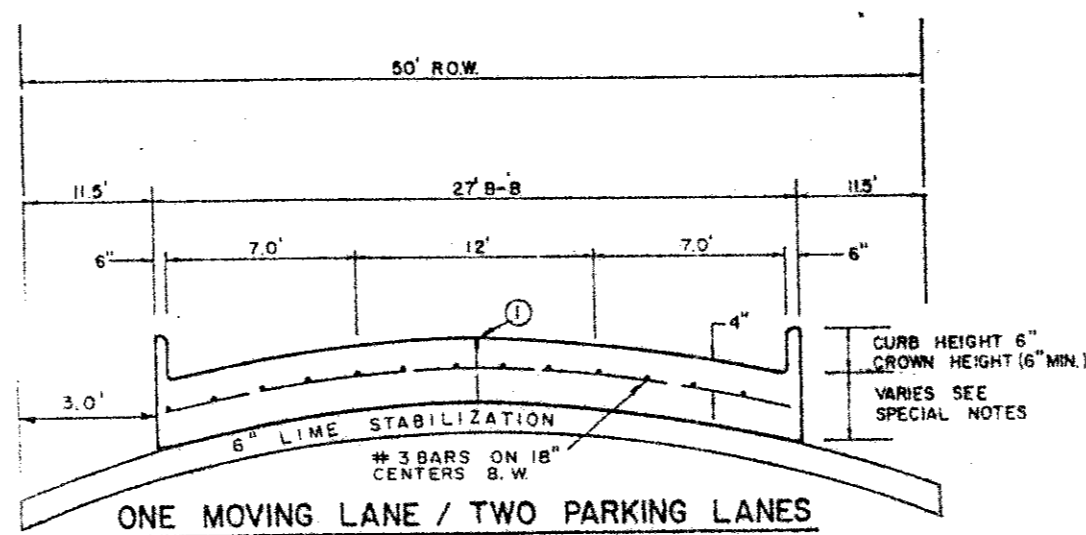
**SECTION A-A**



**PLAN**



**TYPICAL CLEANOUTS**



**LOCAL STREET**

\* OPTIMIZE LIME CONTENT BASED ON A LIME/CEMENT RATIO PH SHOULD BE APPROX. 12.43. TEST SHALL BE CONDUCTED BY A QUALIFIED GEOTECHNICAL FIRM PROVIDED BY THE DEVELOPER. TEST RESULTS SHALL BE PROVIDED TO THE CITY. SEPARATE TEST ARE REQUIRED WHEN SUBGRADE CONDITIONS CHANGE.

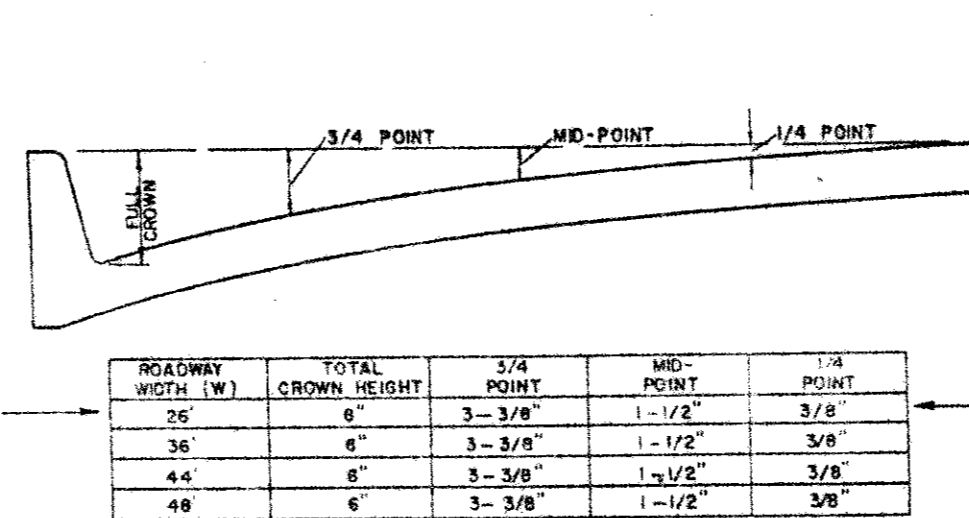
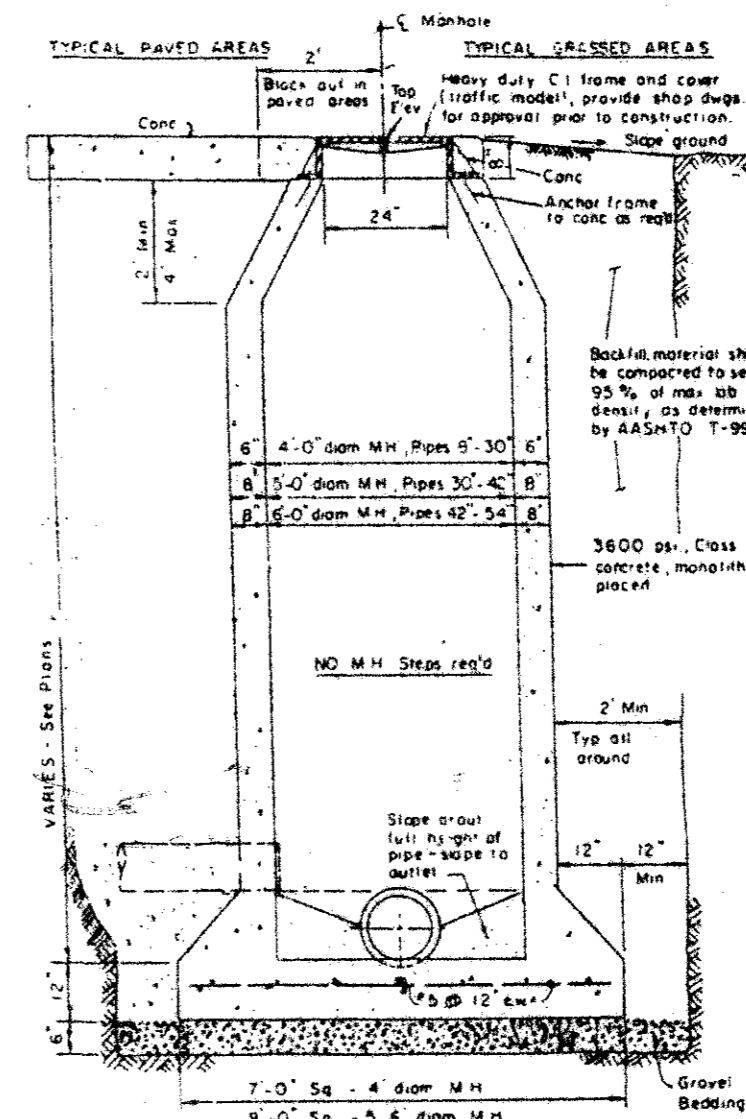
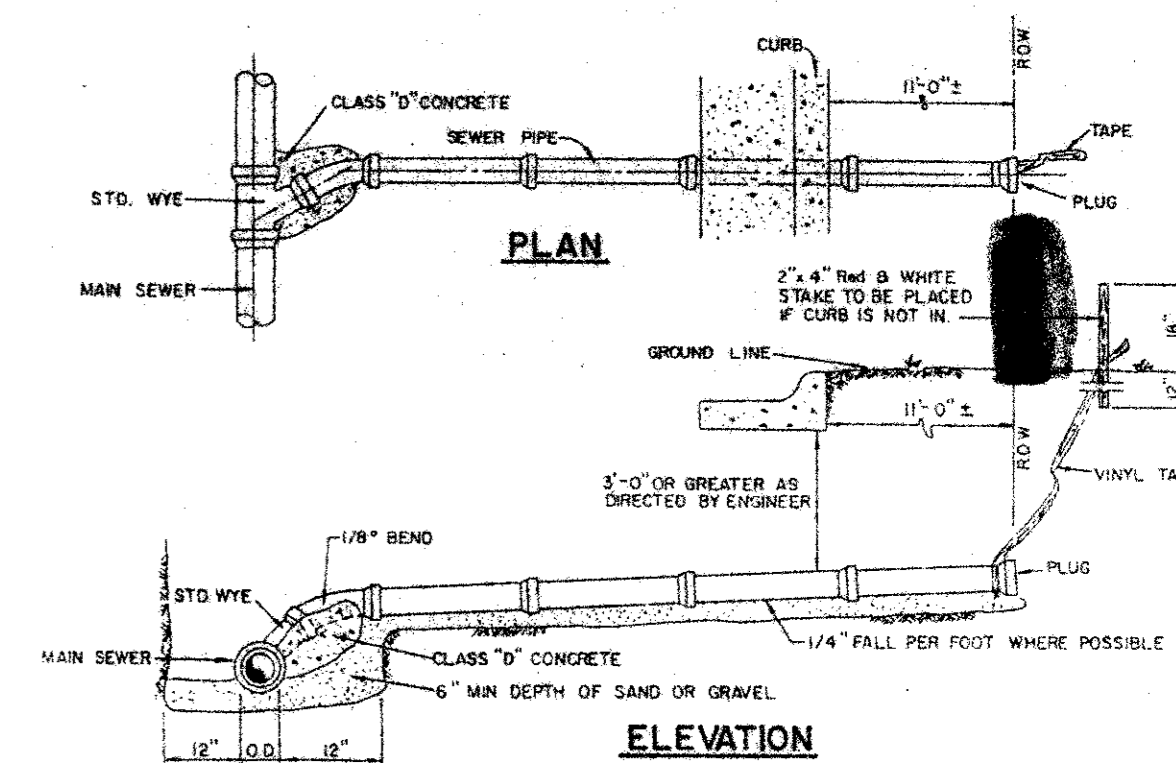


TABLE OF CROWN HEIGHTS AND ORDINATES FOR VARIOUS PARABOLIC SECTIONS

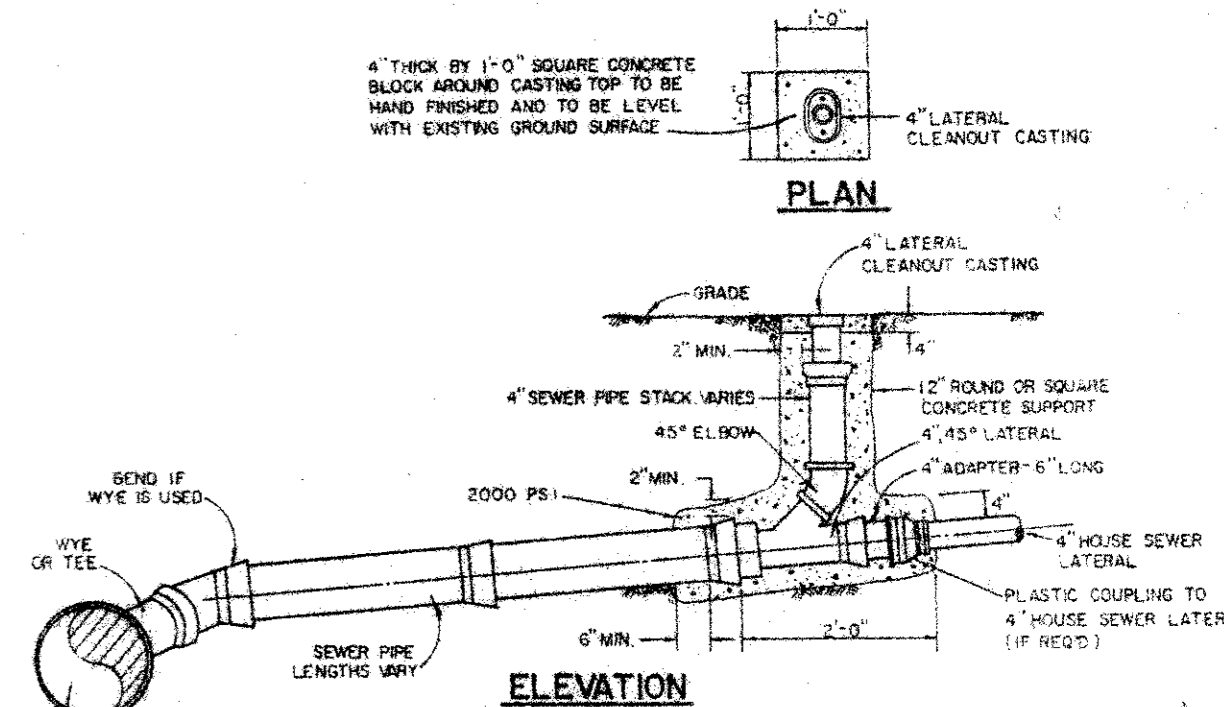
ROADWAY WIDTH (W)	TOTAL CROWN HEIGHT	3/4 POINT	MID-POINT	1/4 POINT
26	6"	3-3/8"	1-1/2"	3/8"
36	6"	3-3/8"	1-1/2"	3/8"
46	6"	3-3/8"	1-1/2"	3/8"
48	6"	3-3/8"	1-1/2"	3/8"



CAST IN PLACE MANHOLE WHERE DROP M.H. IS REQUIRED, USE INSIDE DROP CONNECTION AS PER TOWN OF ADDISON STANDARDS.



**SANITARY SEWER SERVICE CONNECTION**



ALL PVC SANITARY SEWER PIPE TO BE SDR 35 WITH INTEGRAL BELL. IT SHALL BE THE RESPONSIBILITY OF THE CONTRACTOR TO FIELD LOCATE HORIZONTALLY EACH 4' SERVICE IN RELATION TO THE SANITARY SEWER STATIONING FIELD TIES ARE TO BE INCLUDED AND RECORDED ON ALLOWED SANITARY SEWER TIE. THIS TIE, WHEN GIVEN IN COLOR IS TO BE ATTACHED TO THE 4' SERVICE AT THE ROW LINE AND BROUGHT TO THE SURFACE TO BE USED AS A PERMANENT MARKER.

**TOWN OF ADDISON**  
PAVING AND DRAINAGE, UTILITIES  
STANDARD DETAILS  
**CELESTIAL PLACE**  
ADDISON / DALLAS, TEXAS

FOR :  
**ALLEGIANCE GROUP, INC.**  
8080 N. CENTRAL EXPWY.  
DALLAS, TEXAS 75206

BY :  
**DAL-TECH ENGINEERING INC**  
11020 AUDELIA RD., SUITE C207  
DALLAS, TEXAS 75342  
PH. (214)553-5500