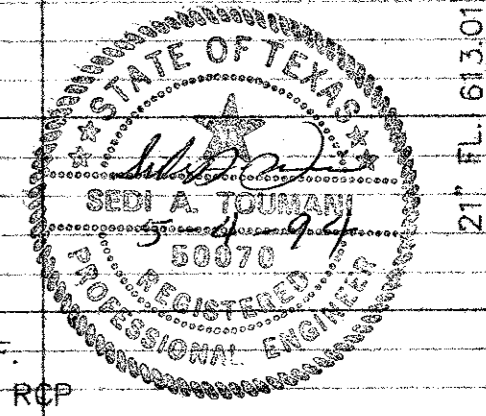
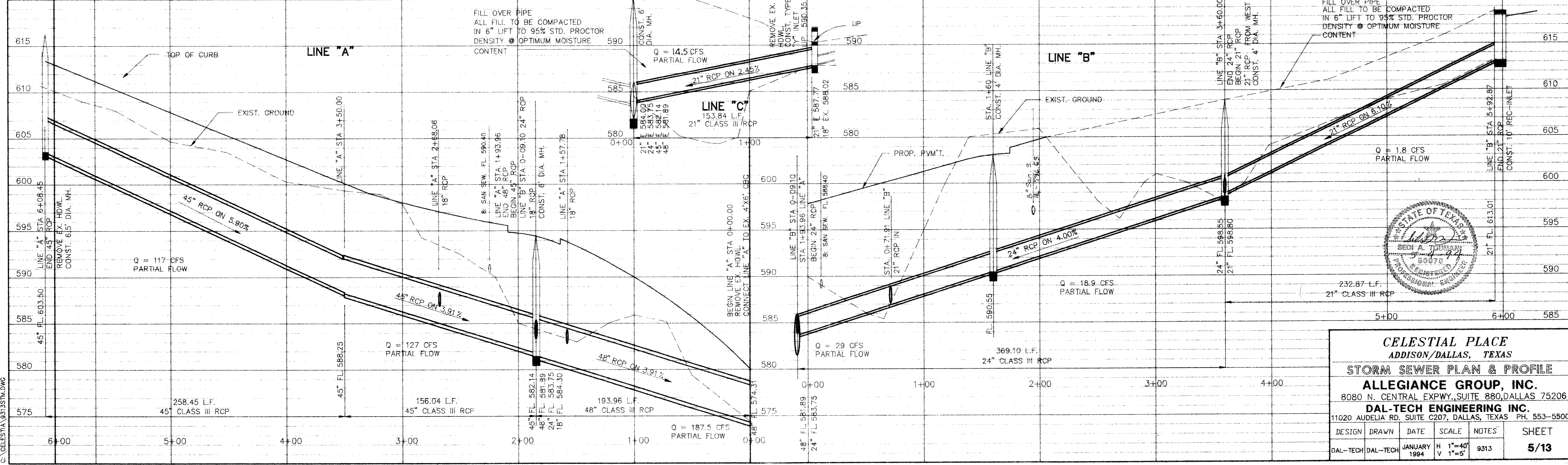
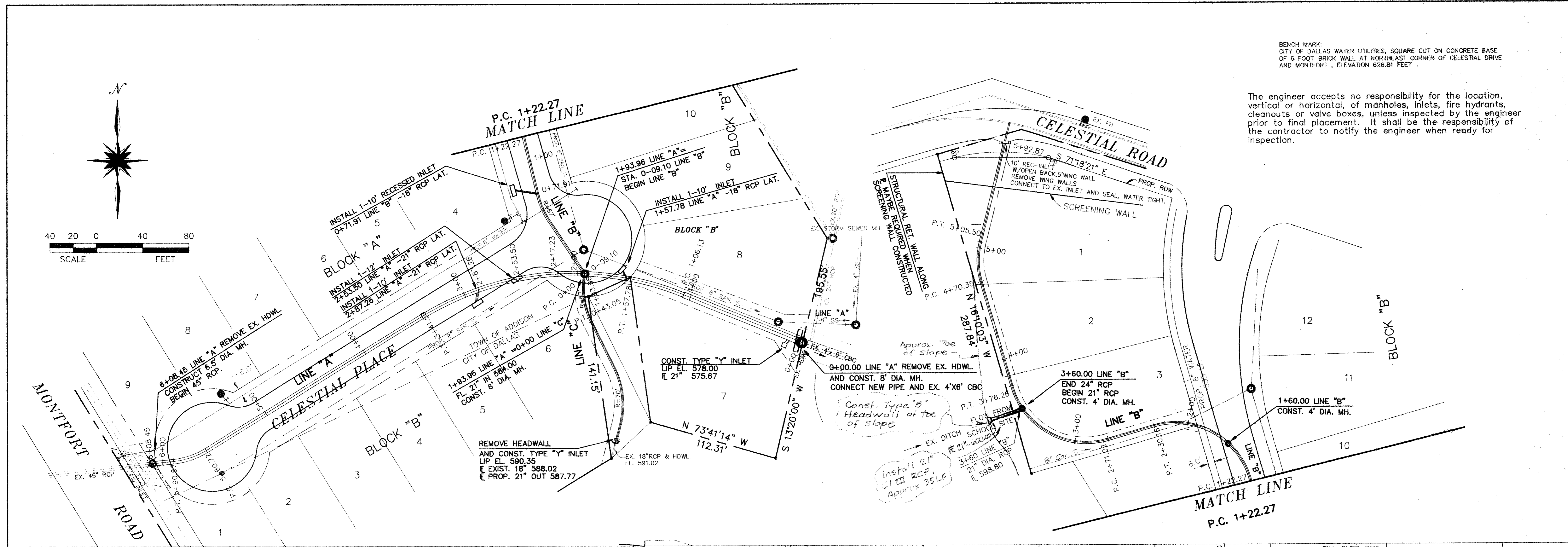


BENCH MARK:
CITY OF DALLAS WATER UTILITIES, SQUARE CUT ON CONCRETE BASE
OF 6 FOOT BRICK WALL AT NORTHEAST CORNER OF CELESTIAL DRIVE
AND MONTFORT, ELEVATION 626.81 FEET.

The engineer accepts no responsibility for the location, vertical or horizontal, of manholes, inlets, fire hydrants, cleanouts or valve boxes, unless inspected by the engineer prior to final placement. It shall be the responsibility of the contractor to notify the engineer when ready for inspection.



| | | | | | |
|----------------------------------------------------------------------------------------------|----------|--------------|---------------------|-------|-------|
| CELESTIAL PLACE ADDISON/DALLAS, TEXAS | | | | | |
| STORM SEWER PLAN & PROFILE | | | | | |
| ALLEGIANCE GROUP, INC. 8080 N. CENTRAL EXPWY., SUITE 880, DALLAS 75206 | | | | | |
| DAL-TECH ENGINEERING INC. 11020 AUDELIA RD. SUITE C207, DALLAS, TEXAS PH. 553-5500 | | | | | |
| DESIGN | DRAWN | DATE | SCALE | NOTES | SHEET |
| DAL-TECH | DAL-TECH | JANUARY 1994 | H 1"=40' V 1"=6' | 9313 | 5/13 |

C:\CELESTIA\9313STM.DWG