

- Sta. 0+02 Plug End Of 8" PVC $\Delta=15^{\circ}00'$ Rt.
- Sta. 0+39 Const. Std. 4" Dia. M.H. w/4" Lot. N. $\Delta=08^{\circ}15'$ Rt.
- Sta. 1+71 Const. Std. 4" Dia. M.H. $\Delta=22^{\circ}30'$ Lt.
- Sta. 2+45 Const. Std. 4" Dia. M.H.
- Sta. 3+87 Const. Std. 4" Dia. M.H. $\Delta=90^{\circ}$ Rt.
- Sta. 4+26 Connect To Exist. M.H. Plug Exist. Stubout.

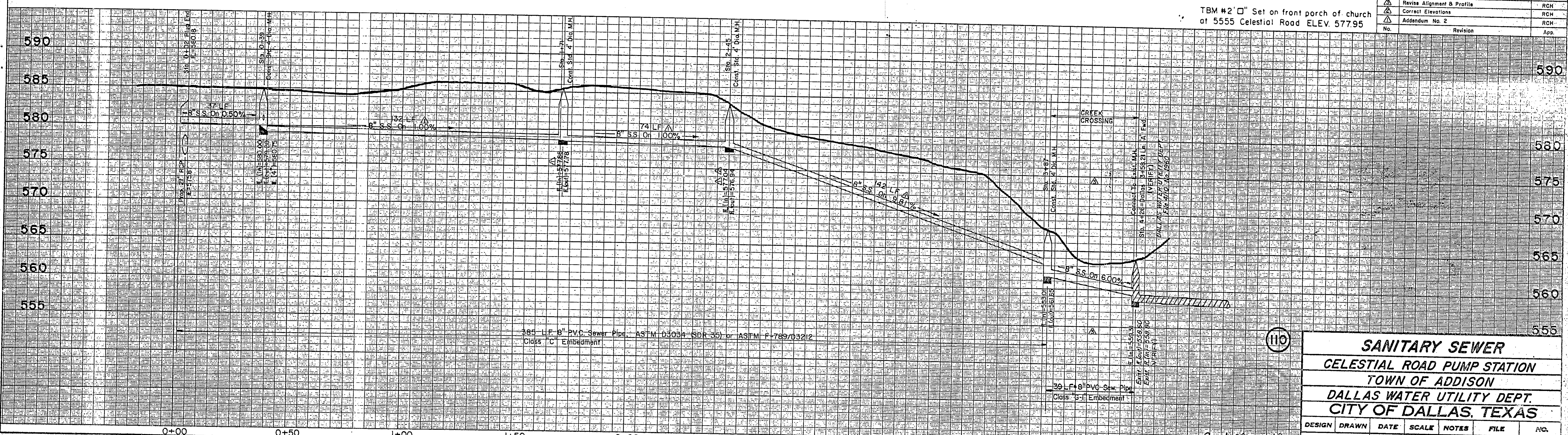
Bk. B/8166

Benchmarks:

TBM #1 "□" Set on N.E. corner concrete water valve vault located 70' ± north of NW property corner. ELEV. 608.44

TBM #2 "□" Set on front porch of church at 5555 Celestial Road ELEV. 577.95

No.	Revision	App.
1	Add Embedment Note B Sht. No., Delete MH Option	RCH
2	Revise Alignment & Profile	RCH
3	Correct Elevations	RCH
4	Addendum No. 2	RCH



110

SANITARY SEWER
CELESTIAL ROAD PUMP STATION
TOWN OF ADDISON
DALLAS WATER UTILITY DEPT.
CITY OF DALLAS, TEXAS

DESIGN	DRAWN	DATE	SCALE	NOTES	FILE	NO.
GINN, INC.	Dallas, TX	JAN 15, 87	H1=20'	RCH	4110	1960

2-14-87