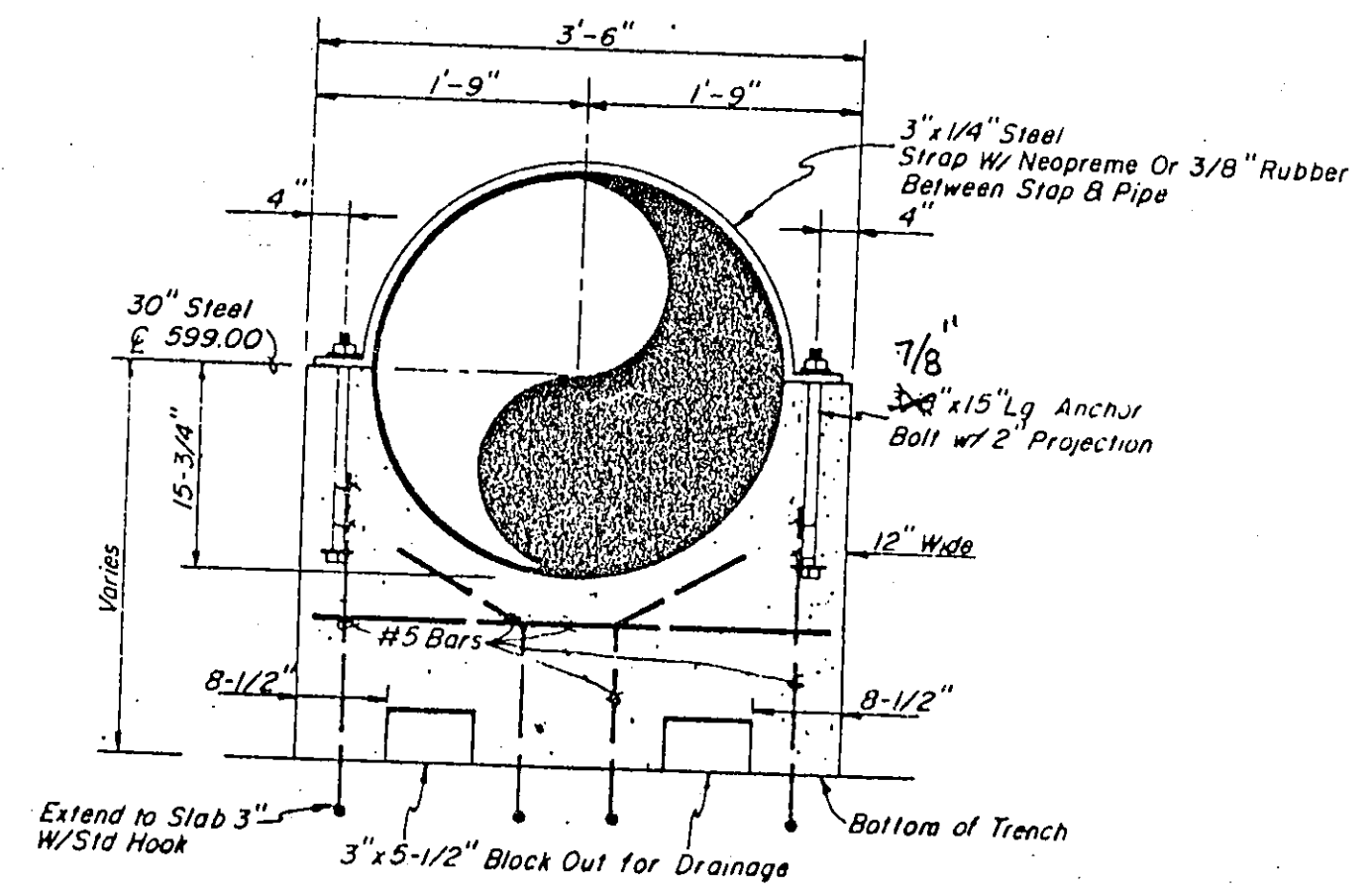


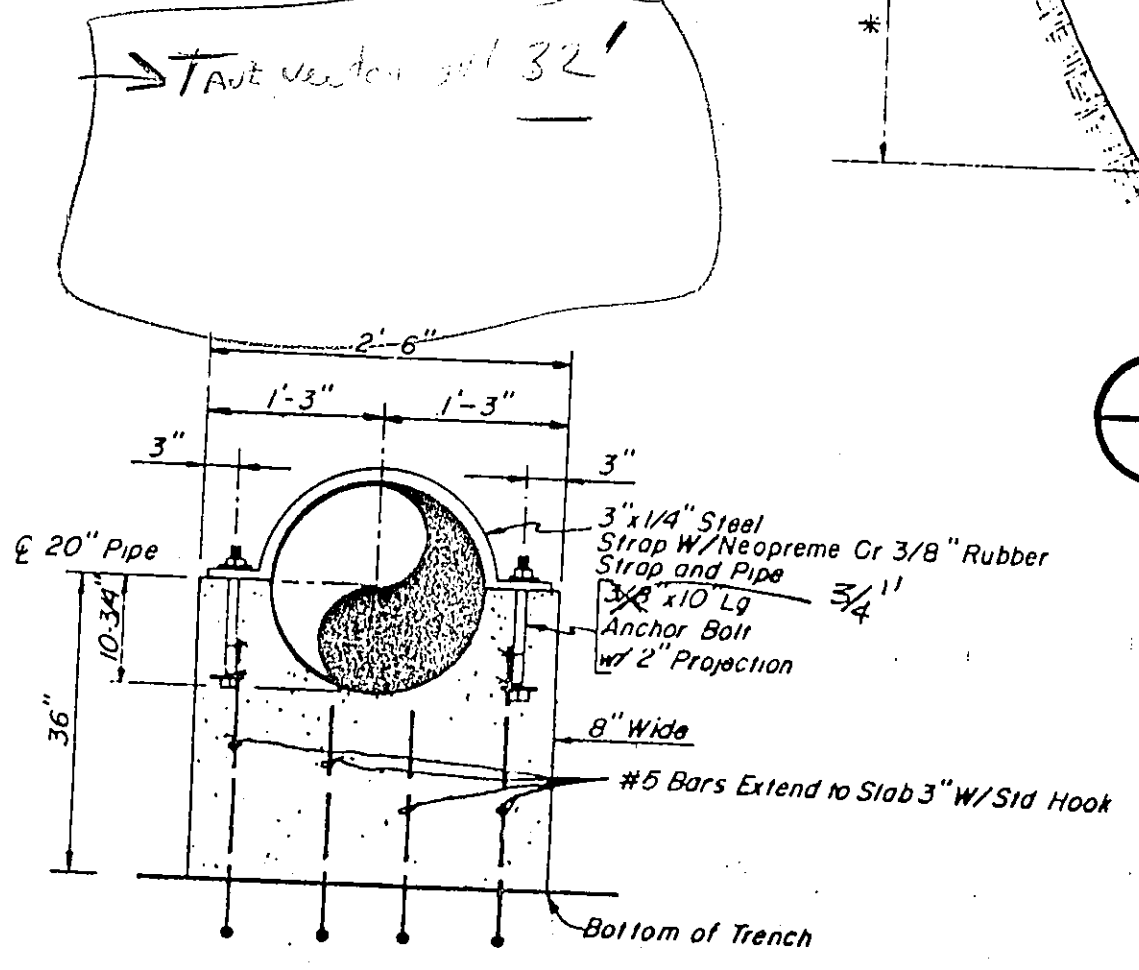
2 SECTION
1/2" = 1'-0"

PIPING PLAN
1/8" = 1'-0"

- NOTE:
- FOR STRUCTURAL DETAILS OF PIPE CHANNEL SEE SHT. S-5
 - PS DENOTES PIPE SUPPORT
 - SEE A-1 FOR BUILDING DIMENSIONS
 - CHLORINE ROOM SHALL BE PIPED FOR FUTURE CHLORINE EQUIPMENT. EXTEND PIPE MIN. 2' ABOVE FLOOR



PIPE SUPPORT - 30" PIPE
NTS



PIPE SUPPORT - 20" PIPE
NTS

1 SECTION
1/4" = 1'-0"

597 HWL
574.42 FF
GSR
HWL = 622.92

No.	Revision	By	Date
TOWN OF ADDISON DALLAS COUNTY, TEXAS CELESTIAL ROAD PUMP STATION			
PIPING PLAN			
GINN, INC. Consulting Engineers Dallas, Texas			
Designed - RCH	Drawn - GAP	Date - JAN, 1987	Job No. - 217

Randall C. Held
2-19-87