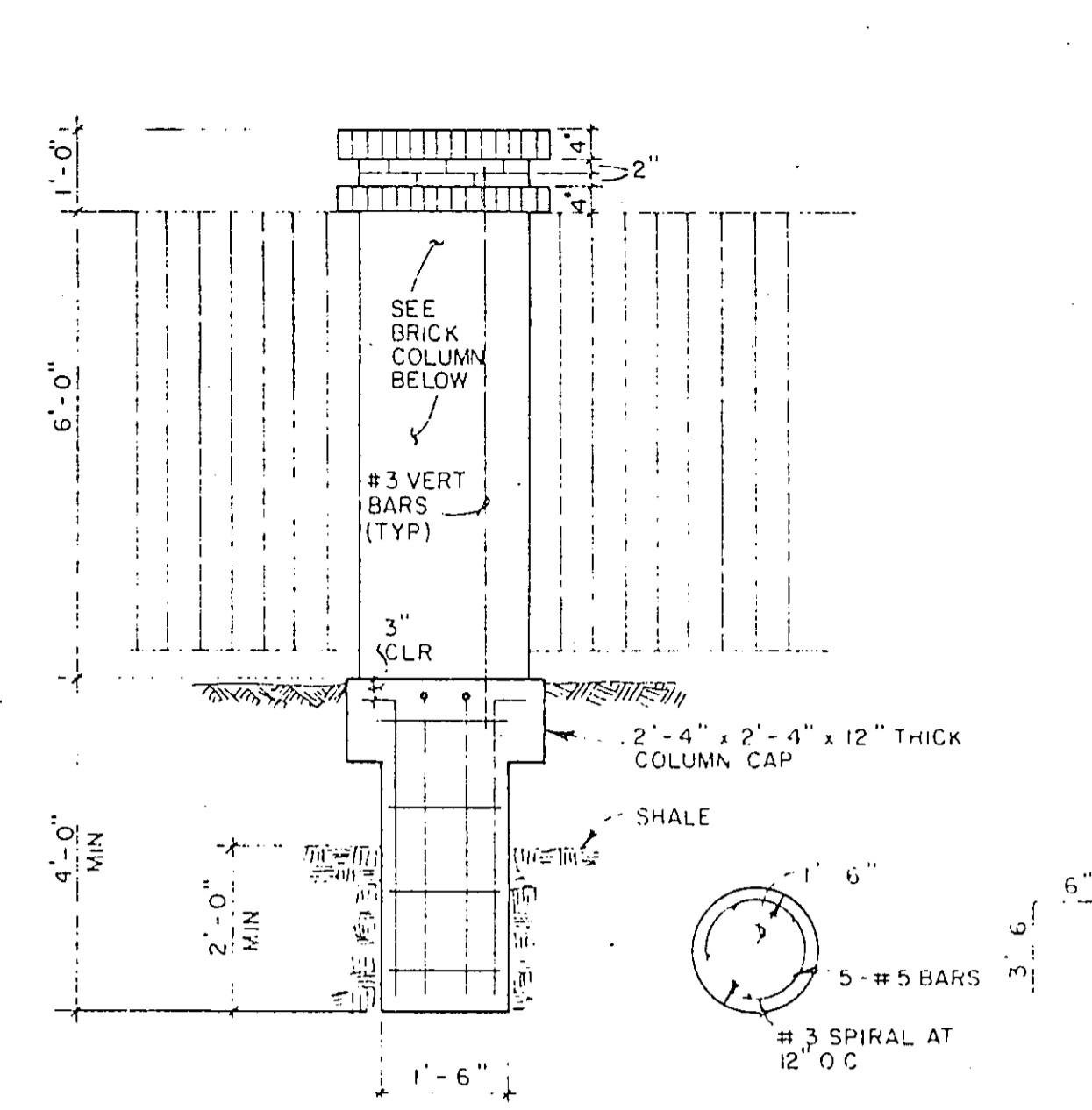
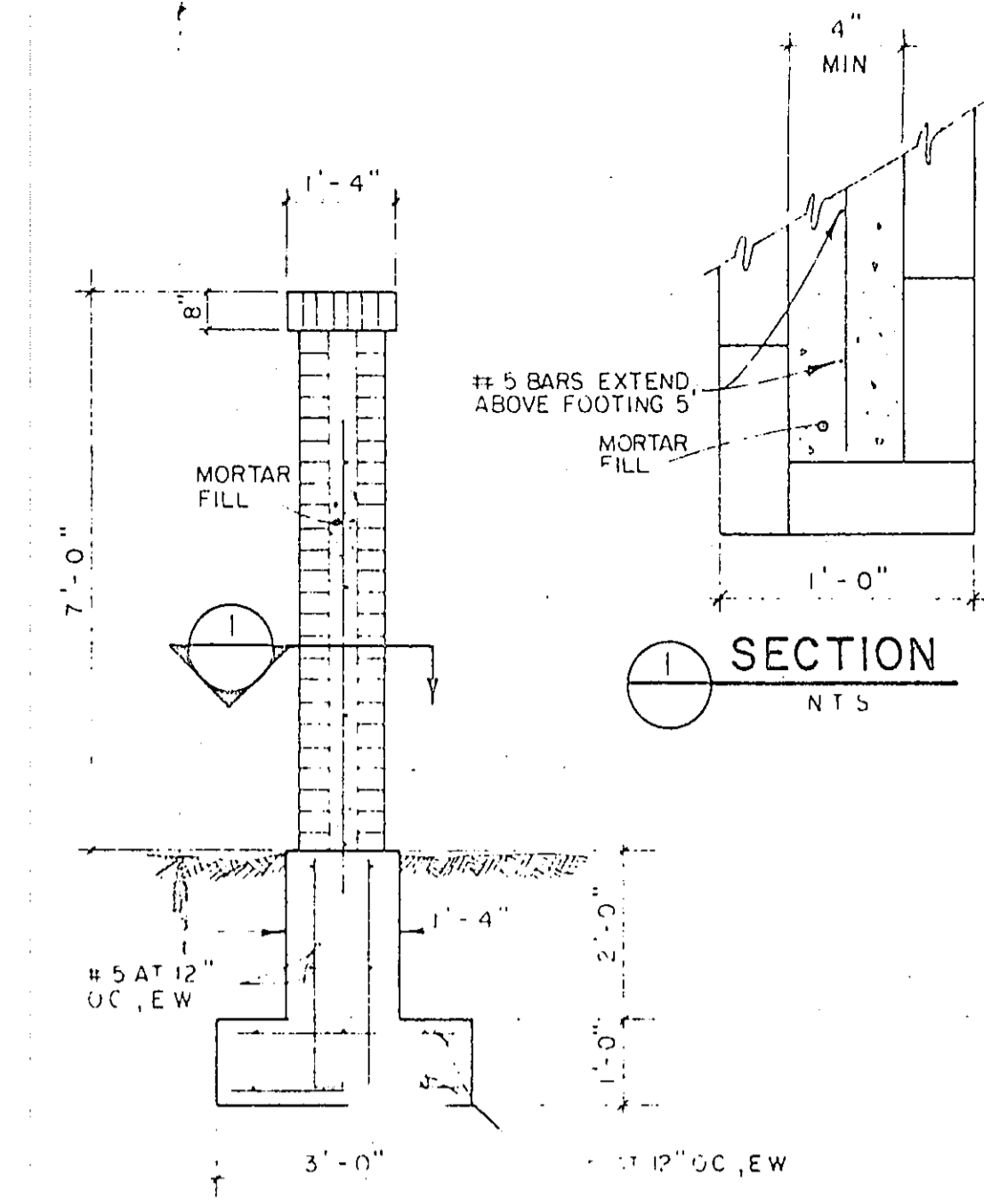


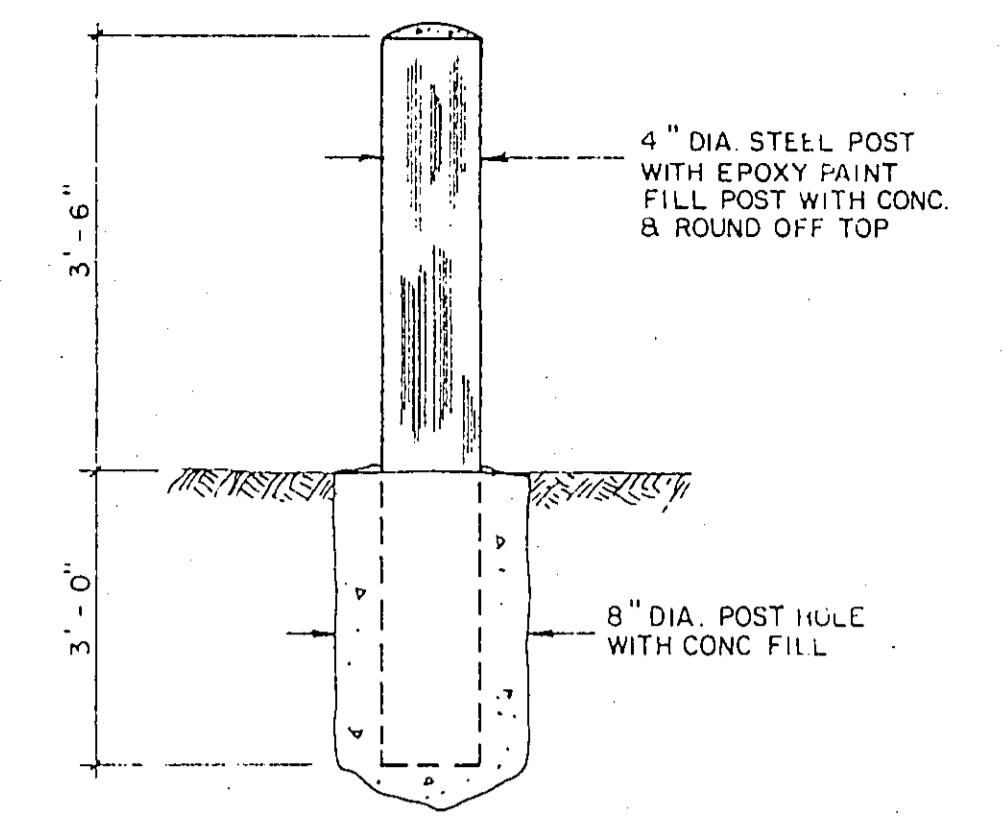
24" VALVE VAULT
SCALE - 1/2" = 1'-0"



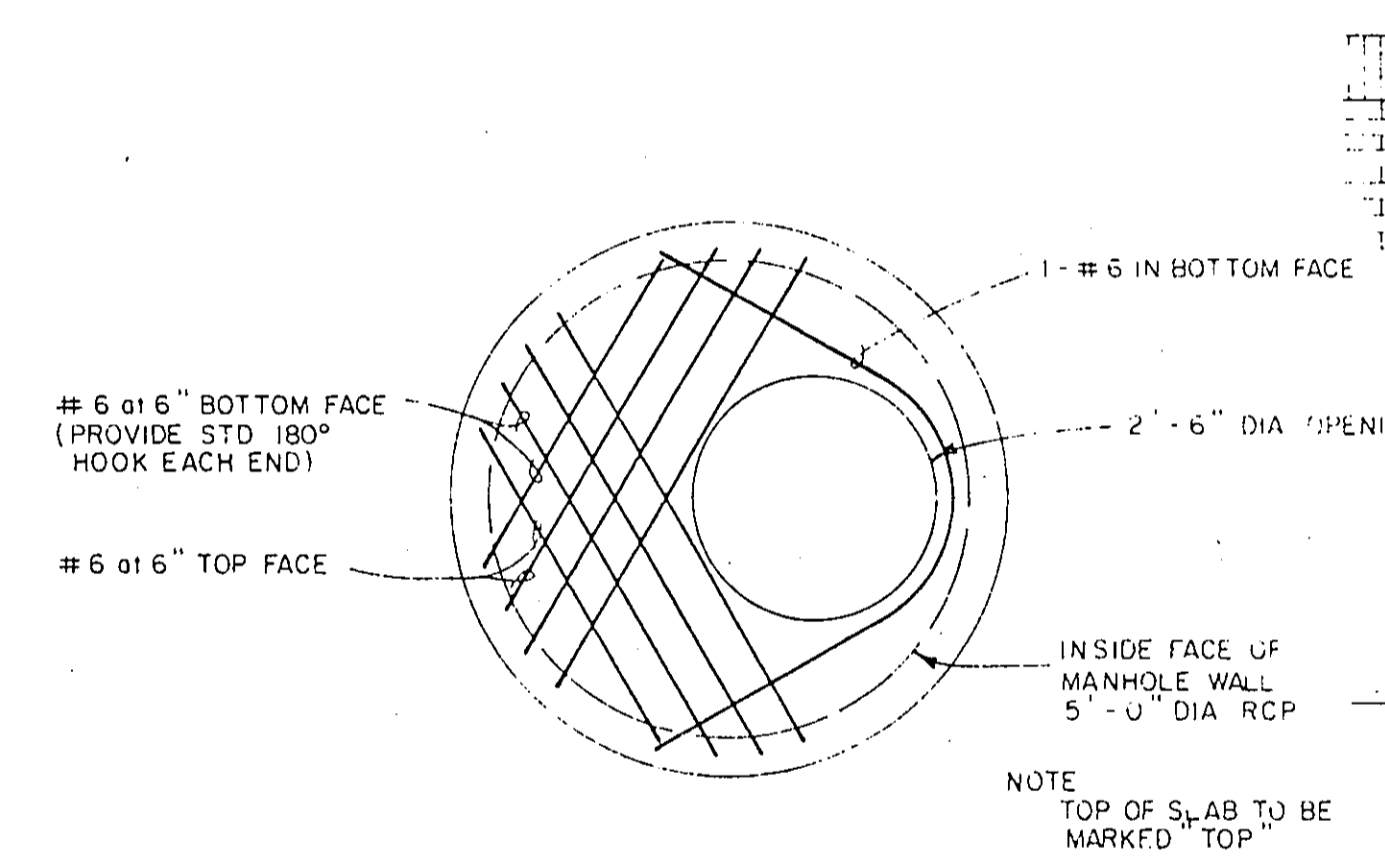
BRICK COLUMN FOOTING
SCALE - 1/2" = 1'-0"



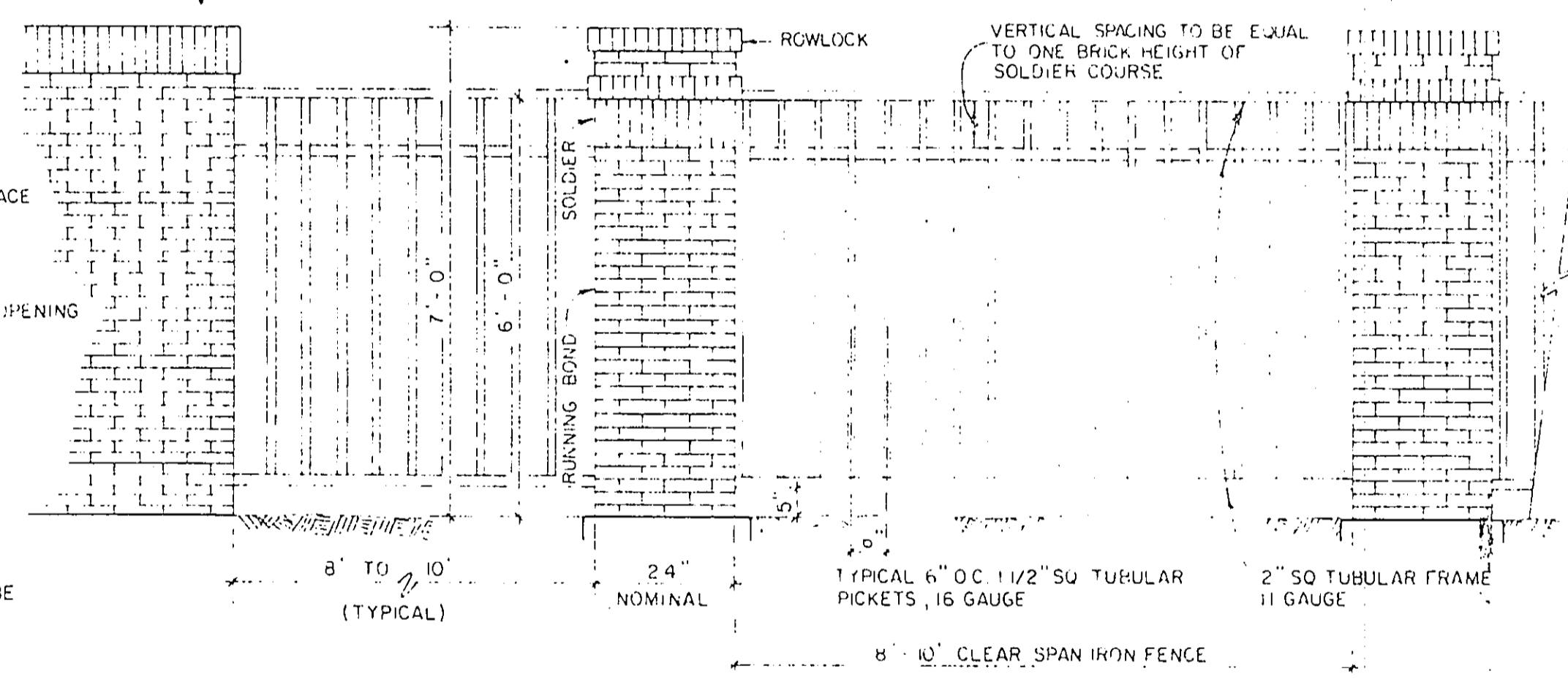
BRICK WALL FOOTING
SCALE - 1/2" = 1'-0"



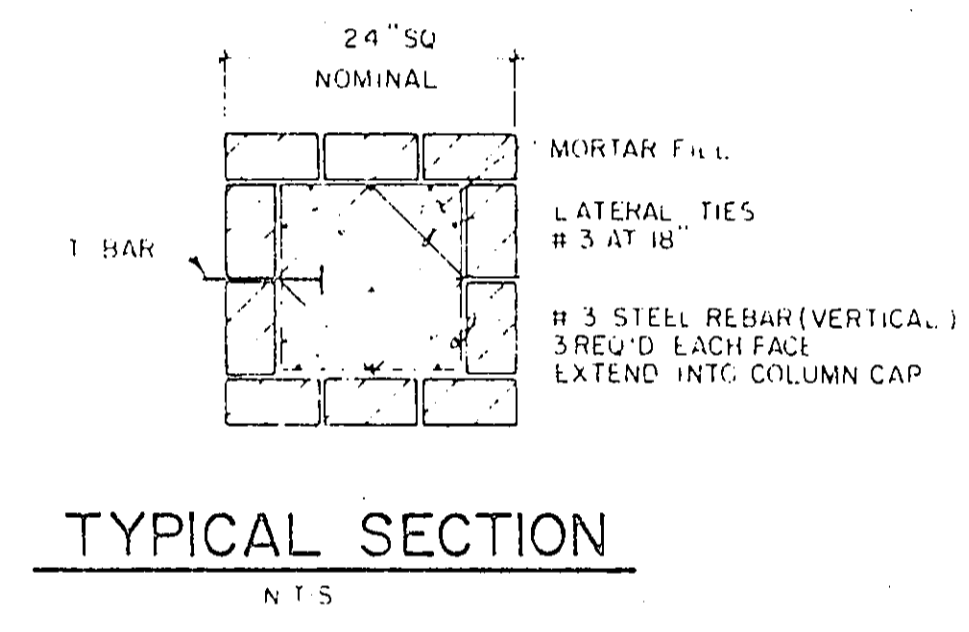
BOLLARD DETAIL
N.T.S.



TOP SLAB REINFORCING PLAN
SCALE - 1/2" = 1'-0"

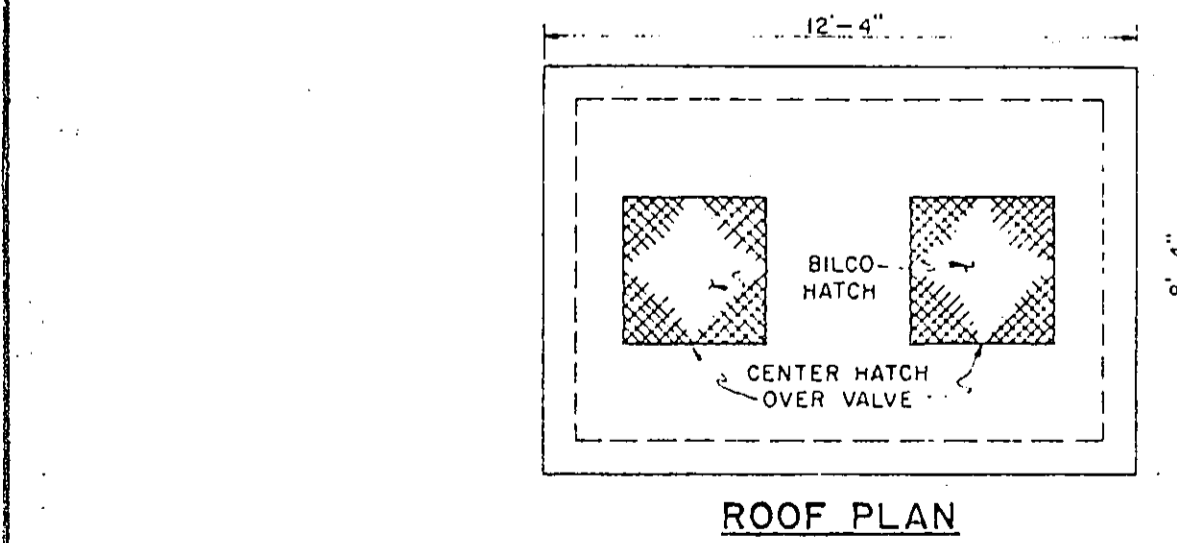


REINFORCED BRICK COLUMNS & IRON FENCE
SCALE - 1/2" = 1'-0"
TYPICAL ELEVATION

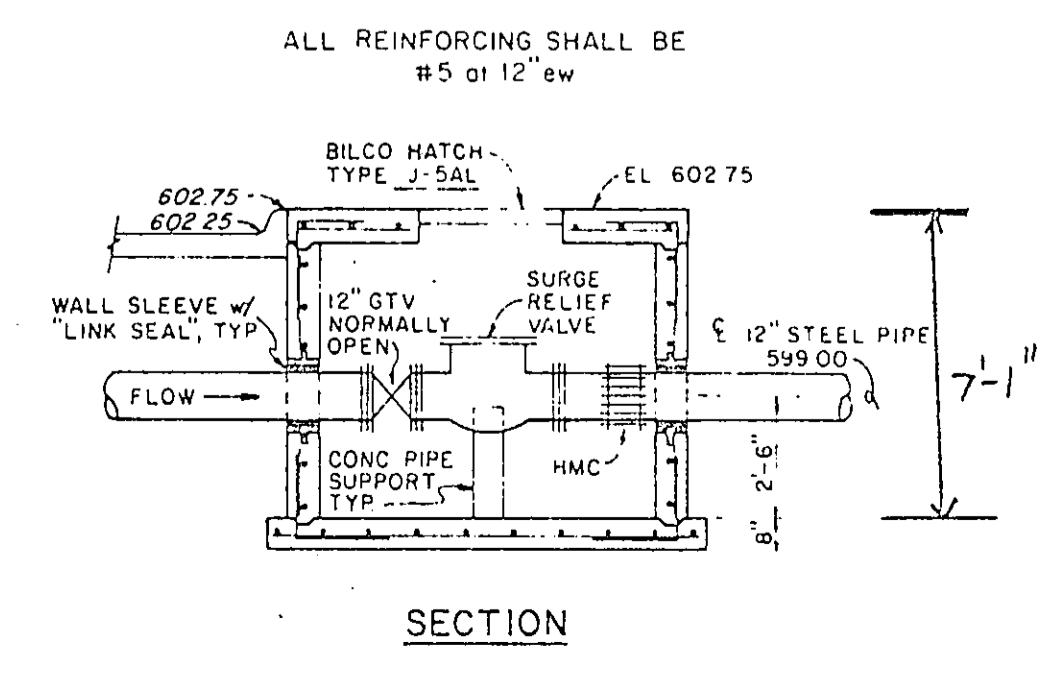
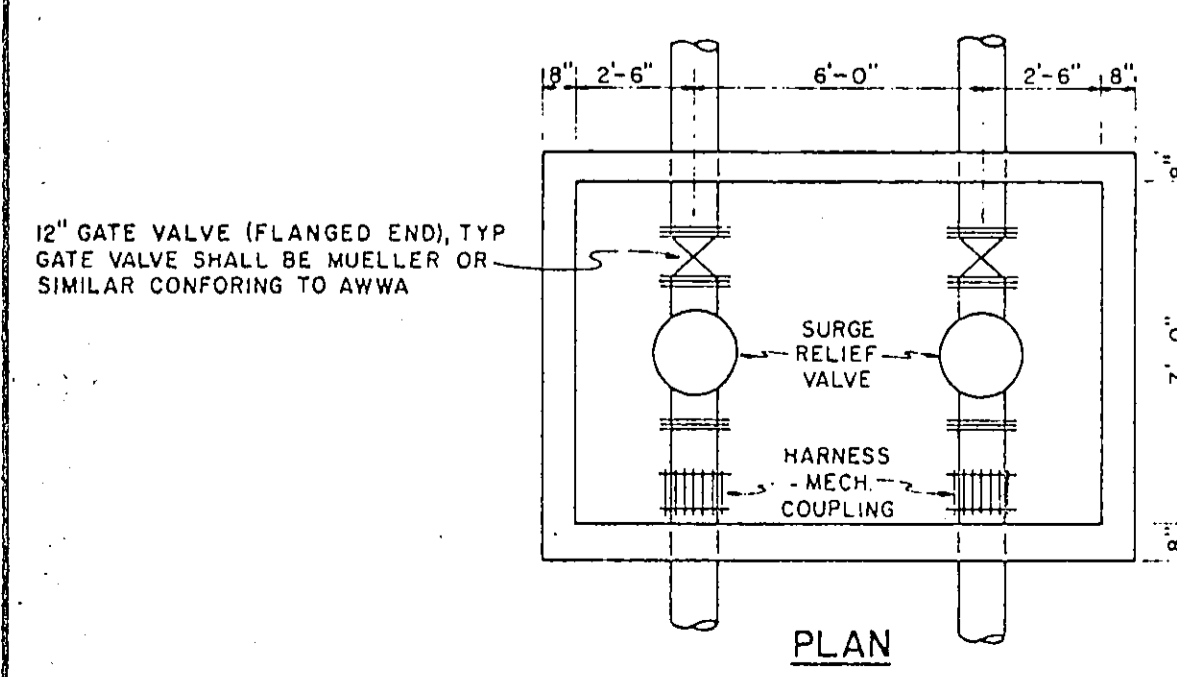


TYPICAL SECTION
N.T.S.

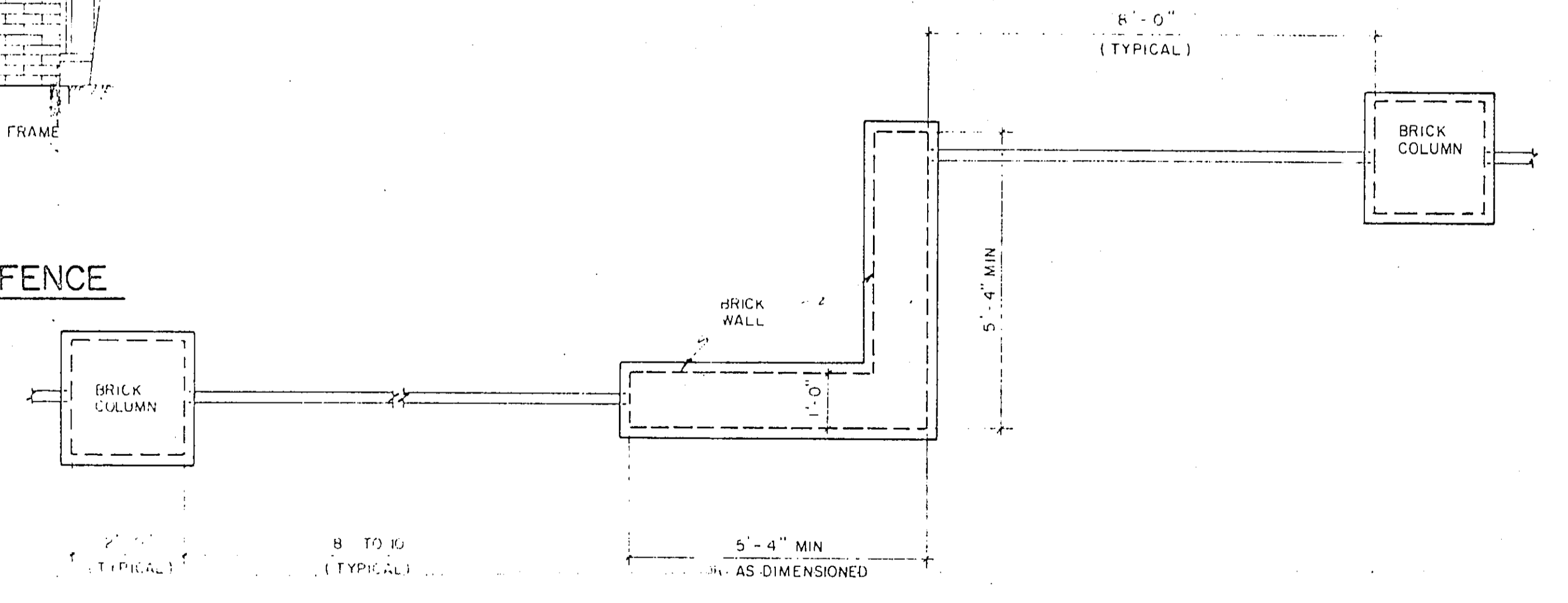
- GENERAL NOTES - IRON GATES
- The entrance and exit gates shall be motor operated and shall be designed to match the iron fence along the front of the property as shown on the plans.
 - The entrance gate and hardware shall span a 24'-0" opening between the brick walls. The exit gate and hardware shall span a 18'-0" opening between two brick columns.
 - The entrance gate shall be operated from a nine button digital keyboard mounted on a post located on the left-hand side of the drive. The keyboard shall allow for a 4-number code which can be changed by Owner. The gate shall remain open until the entering vehicle passes over a loop detector located south of the gate.
 - The exit gate shall open automatically when a vehicle drives over a loop detector located inside the fence area. The gate shall close automatically after the exiting vehicle passes over a loop detector located outside the gate.
 - The Contractor shall submit shop drawings on the gates, gate operators, security code system, and loop detectors.



SURGE RELIEF VALVE VAULT
SCALE - 1/4" = 1'-0"



- NOTES:
- Dimensions: All nominal
 - Brick: To match brick of pump station.
 - Mortar: Type 'N', struck joints Not to exceed 1/2".
 - Iron: Must have full depth welds. All weld spots ground smooth. 2 shop coats galvanized primer. 2 coats semigloss - Addison Brown.
 - Bids: Iron & brick fencing to be bid from site layout sheet.
 - 'T' Bar Connectors:
 - The iron contractor shall furnish 2 (two) Tbars per side of iron sections to brick contractor.
 - Locations to be field adjusted and coordinated by both iron and brick contractors and approved by Engineer and Town of Addison Landscape Architect.
 - Elevation Changes: All fencing elevation changes shall occur at fence and column connections. Final locations to be approved by Engineer and Town of Addison Landscape Architect.



TYPICAL PLAN AT TURNS
SCALE - 1/2" = 1'-0"

Addendum #1		RCH	3/19/87
No	Revision	By	Date
TOWN OF ADDISON DALLAS COUNTY, TEXAS			
CELESTIAL ROAD PUMPING STATION			
MISC. DETAILS - SITE WORK			
GINN, INC. Consulting Engineers Dallas, Texas			
Designed - RCH	Drawn - BS	Date - JAN., 1987	Job No - 217
Approved - HWG	Checked - GAF	Scale - AS SHOWN	Sheet - C-11

Randall C. Hill
2-19-87