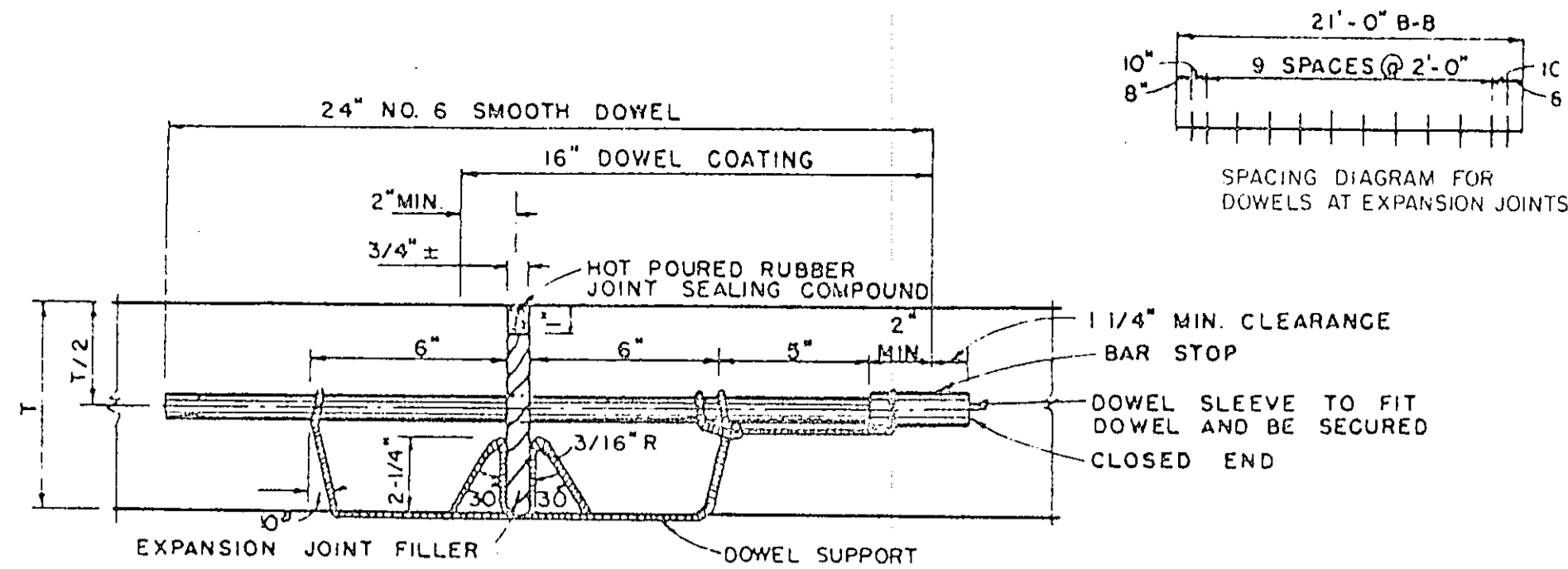


PAVEMENT BARS TO BE BENT DOWN INTO HEADER. HEADER AND PAVEMENT TO BE MONOLITHIC.

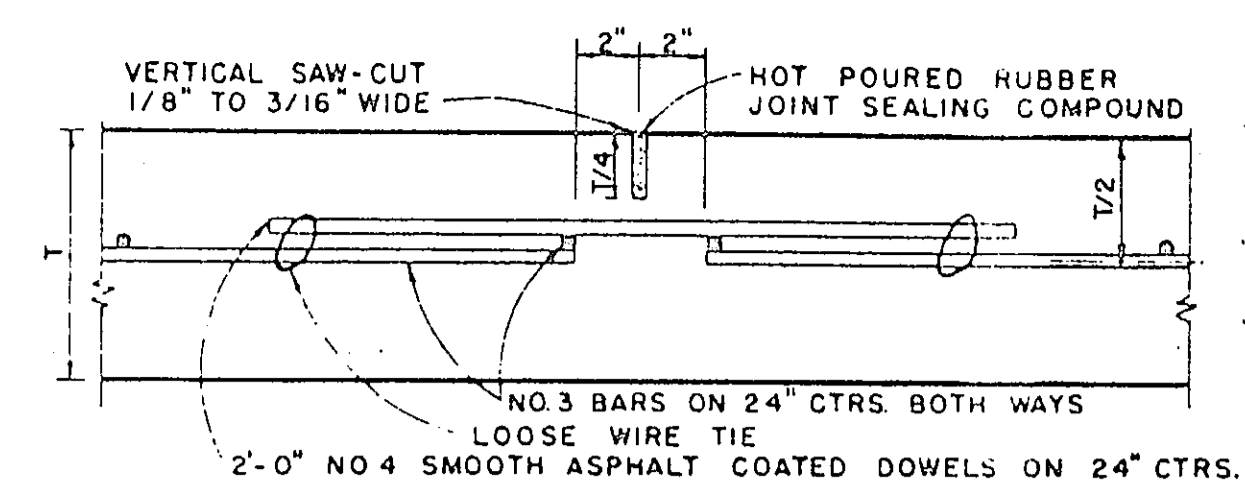
STREET HEADER

N.T.S.



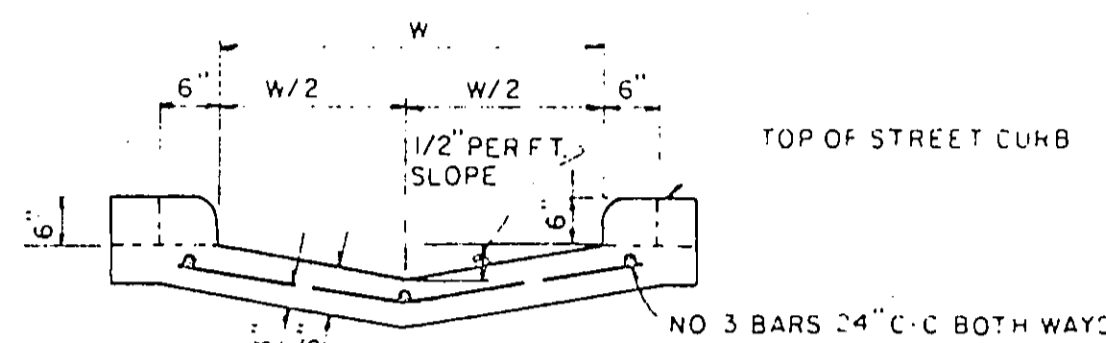
TRANSVERSE EXPANSION JOINT

IDENTICAL FOR STREETS & ALLEYS
N.T.S.

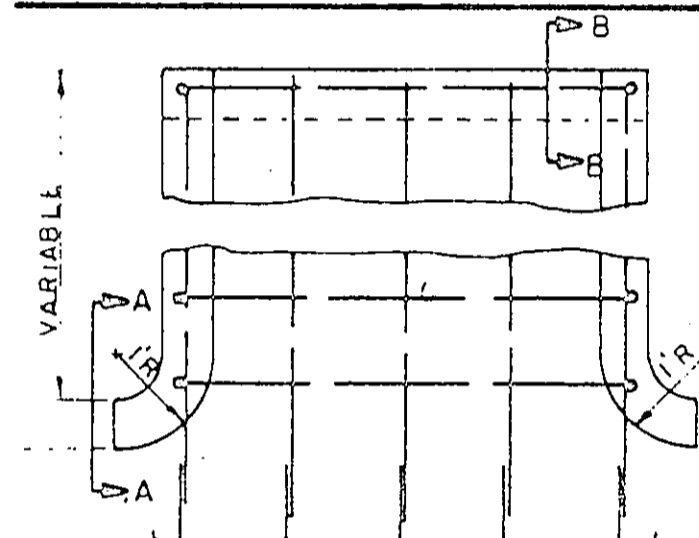
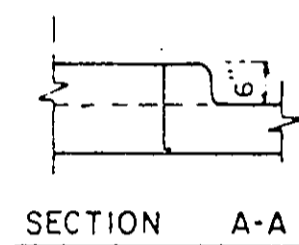


TRANSVERSE CONTRACTION JOINT

IDENTICAL FOR STREETS AND ALLEYS EXCEPT ALLEY LONGITUDINAL REINFORCING BARS.
N.T.S.



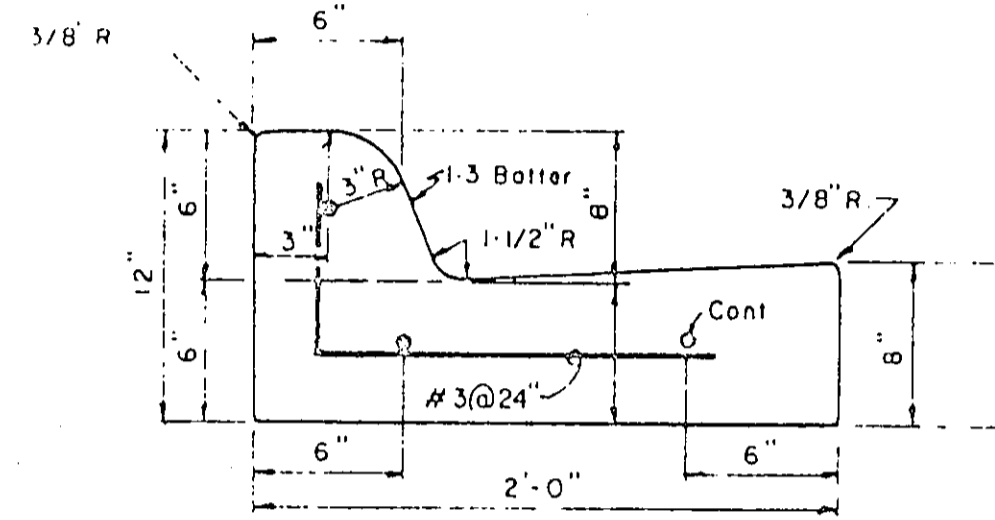
SECTION AT CURB FACE



PLAN

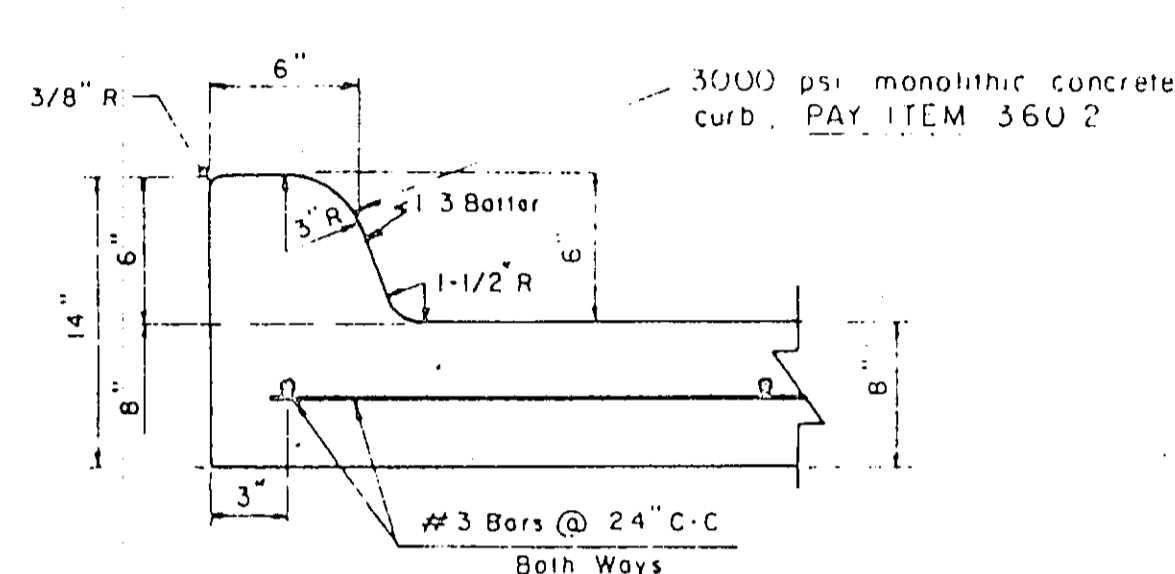
FLUME

N.T.S.



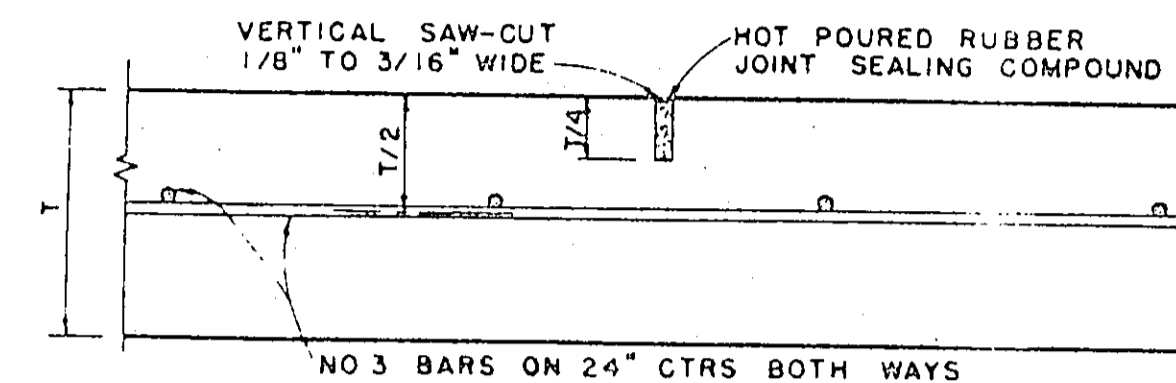
SEPARATE CURB & GUTTER

REINFORCEMENT SHALL BE NO. 3 BARS
N.T.S.



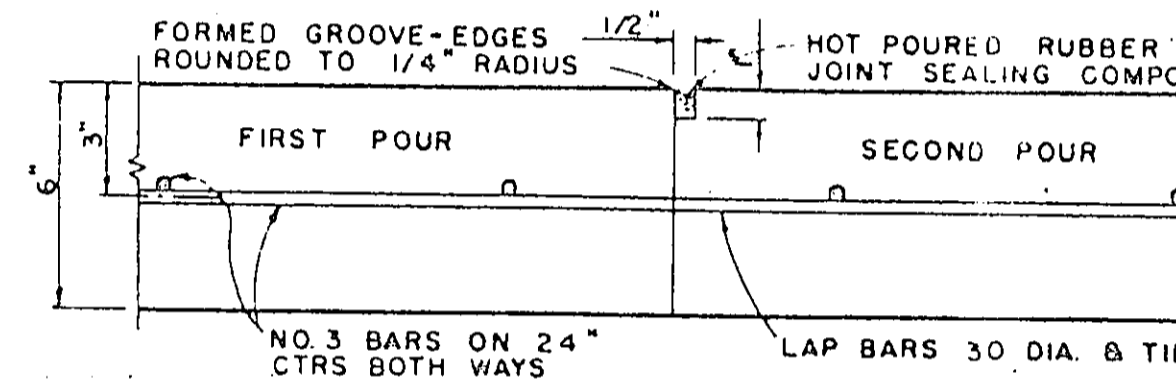
6" INTEGRAL CURB & GUTTER DETAIL

N.T.S.



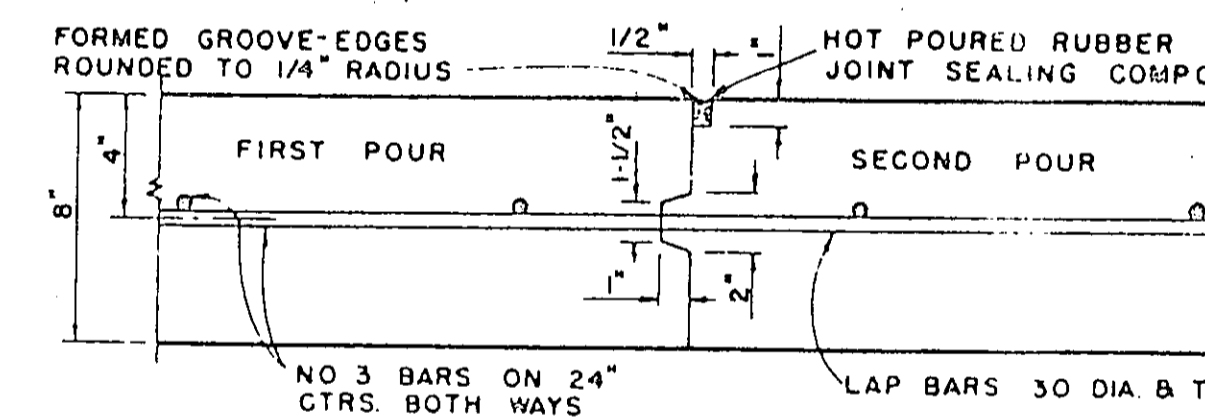
SAWED DUMMY JOINT

IDENTICAL FOR STREETS AND ALLEYS EXCEPT ALLEY LONGITUDINAL REINFORCEMENT BARS
N.T.S.



CONSTRUCTION JOINT

FOR 6" THICKNESS PAVEMENT OR BASE
IDENTICAL FOR STREETS AND ALLEYS EXCEPT ALLEY LONGITUDINAL REINFORCEMENT BARS
N.T.S.



CONSTRUCTION JOINT

FOR 8" THICKNESS PAVEMENT OR BASE
N.T.S.

Randall C. Hood
2-19-87

No.	Revision	By	Date
TOWN OF ADDISON DALLAS COUNTY, TEXAS			
CELESTIAL ROAD PUMP STATION			
MISC. DETAILS - PAVING			
GINN, INC. Consulting Engineers, Dallas, Texas			
Designed - R.C.H.	Drawn - B.S.	Date - JAN., 1987	Job No. - 217
Approved - HWG	Checked - G.A.F.	Scale - AS SHOWN	Sheet - CB