

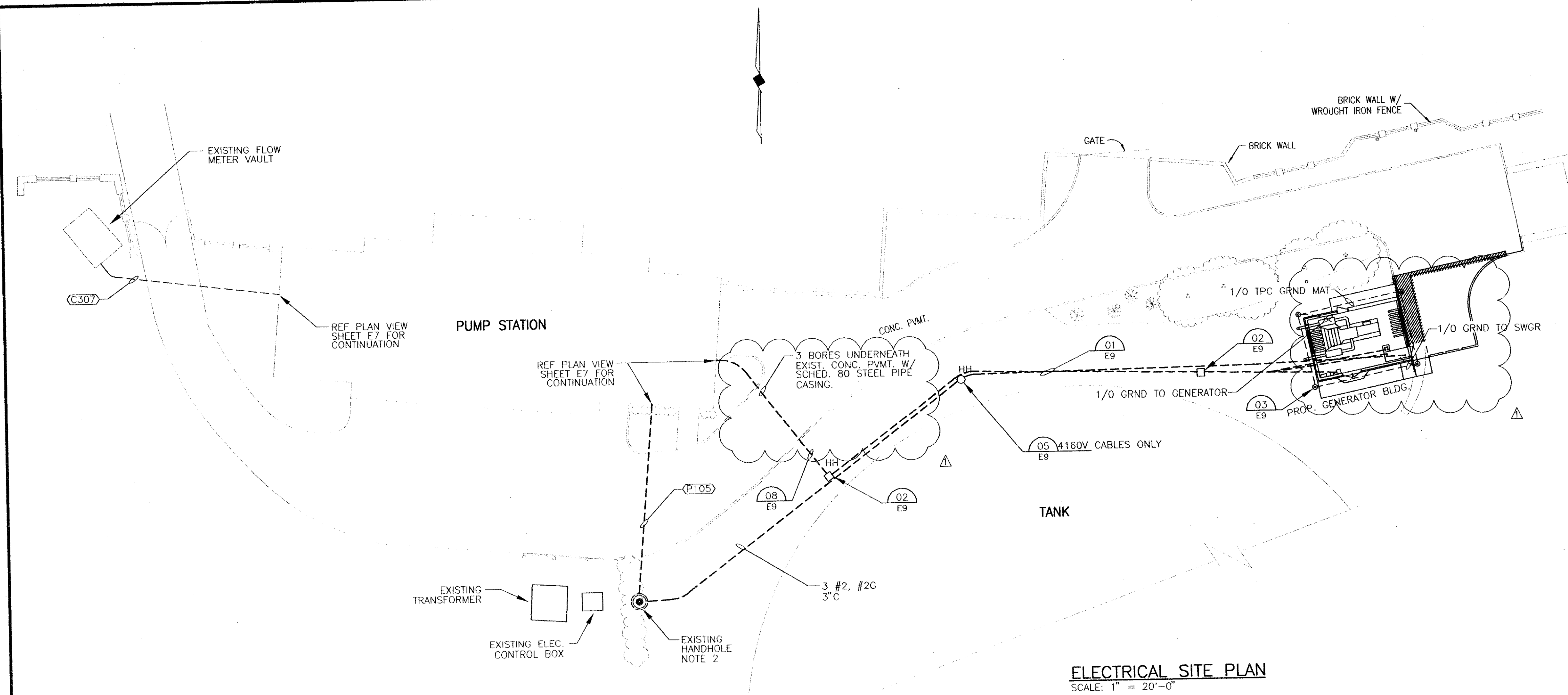
ELECTRICAL SITE & PLAN LEGEND

- EXPOSED CONDUIT RUN
- - - - CONCEALED OR UNDERGROUND CONDUIT RUN
- - - - ABOVE CEILING CONDUIT RUN
- (T122) CONDUIT AND CABLE TAG NUMBER
- (LH) WALL MOUNTED LIGHT FIXTURE
- (LE) EMERGENCY LIGHT FIXTURE LETTER DENOTES TYPE OF FIXTURE
- (S) SPST SWITCH
- (TH) WALL MOUNTED THERMOSTAT
- (D)G WP DUPLEX RECEPTACLE AND GFCI DEVICE MOUNTED IN WEATHERPROOF BOX WITH WEATHERPROOF COVERS
- (GR) GROUND ROD W/ TEST WELL
- +— CONDUIT TEE FITTING
- +— CONDUIT FITTING LB, LR, ETC.
- +— CROSS CONDUIT FITTING

ELECTRICAL ABBREVIATIONS

| | | | |
|------|-------------------------------|---------|-------------------------|
| AFF | ABOVE FINISHED FLOOR | MTD | MOUNTED |
| AL | ALUMINUM | NC | NORMALLY CLOSED |
| BKR | BREAKER | NO | NORMALLY OPEN |
| BLDG | BUILDING | OC | ON CENTER |
| CKT | CIRCUIT | PNL | PANEL |
| CONC | CONCRETE | PMT | PAD MOUNTED TRANSFORMER |
| C | CONDUIT | PRI | PRIMARY |
| CPT | CONTROL POWER TRANSFORMER | PVC | POLYVINYL CHLORIDE |
| CT | CURRENT TRANSFORMER | PT | POTENTIAL TRANSFORMER |
| CU | COPPER | S | SPST SWITCH |
| EC | EMPTY CONDUIT | SC | SURGE CAPACITOR |
| EGC | EQUIPMENT GROUNDING CONDUCTOR | S/N | SOLID NEUTRAL |
| FDR | FEEDER | STN/STL | STAINLESS STEEL |
| G | GROUND | SW | SWITCH |
| GND | GROUND, GROUNDING, GROUNDED | SWGR | SWITCHGEAR |
| GFP | GROUND FAULT PROTECTION | SZ | SIZE |
| GRS | GALVANIZED RIGID STEEL | TYP | TYPICAL |
| HDG | HOT DIPPED GALVANIZED | TUE | TU ELECTRIC |
| HOA | HAND/OFF/AUTO | UG | UNDERGROUND |
| HH | HANDHOLE | WP | WEATHER PROOF |
| LA | LIGHTNING ARRESTER | XFMR | TRANSFORMER |
| LT | LIGHT | | |
| LTG | LIGHTING | | |
| MB | MAIN BREAKER | | |

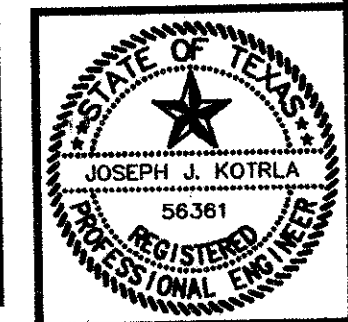
- NOTES:
1. ALL UNDERGROUND CONDUIT RUNS SHALL BE CONCRETE ENCASED.
 2. FURNISH AND INSTALL 3/4"x10" COPPERCLAD STEEL GROUND ROD IN EXISTING HANDHOLE. BOND #1/0G WIRE IN DUCTBANK THERETO.
 3. INSTRUMENTATION CONDUITS SHALL BE RUN THROUGH HH IN CONDUIT. INSTALL "C" PULLING FITTING IN HANDHOLE.



ELECTRICAL SITE PLAN
SCALE: 1" = 20'-0"

VERIFY SCALE
0 1
Bar is one inch on original drawing. If not one inch on this sheet, adjust scale.

THESE DOCUMENTS ARE FOR BIDDING, CONSTRUCTION, AND PERMIT PURPOSES.
Shimek, Jacobs & Finklea
DATE: 2-10-98



| | | | |
|--|---------|------------|-------------------------|
| NO. | 2-10-98 | ADDENDUM 2 | JJK |
| DATE | | REVISION | BY |
| TOWN OF ADDISON, TEXAS | | | |
| CELESTIAL ROAD PUMP STATION ADDITIONS | | | |
| ELECTRICAL SITE PLAN | | | |
| SHIMEK, JACOBS & FINKLEA, L.L.P. | | | |
| CONSULTING ENGINEERS Dallas, Texas | | | |
| DESIGNED BY: | J.J.K. | PROJECT: | 97 180 |
| DRAWN BY: | C.C.C. | DATE: | JANUARY, 1998 |
| | | | SHEET NO. 6 OF 6 SHEETS |

These plans and related specifications were prepared for construction of this specific project only. Reuse of these documents is not permitted without written authorization of Shimek, Jacobs & Finklea, L.L.P.