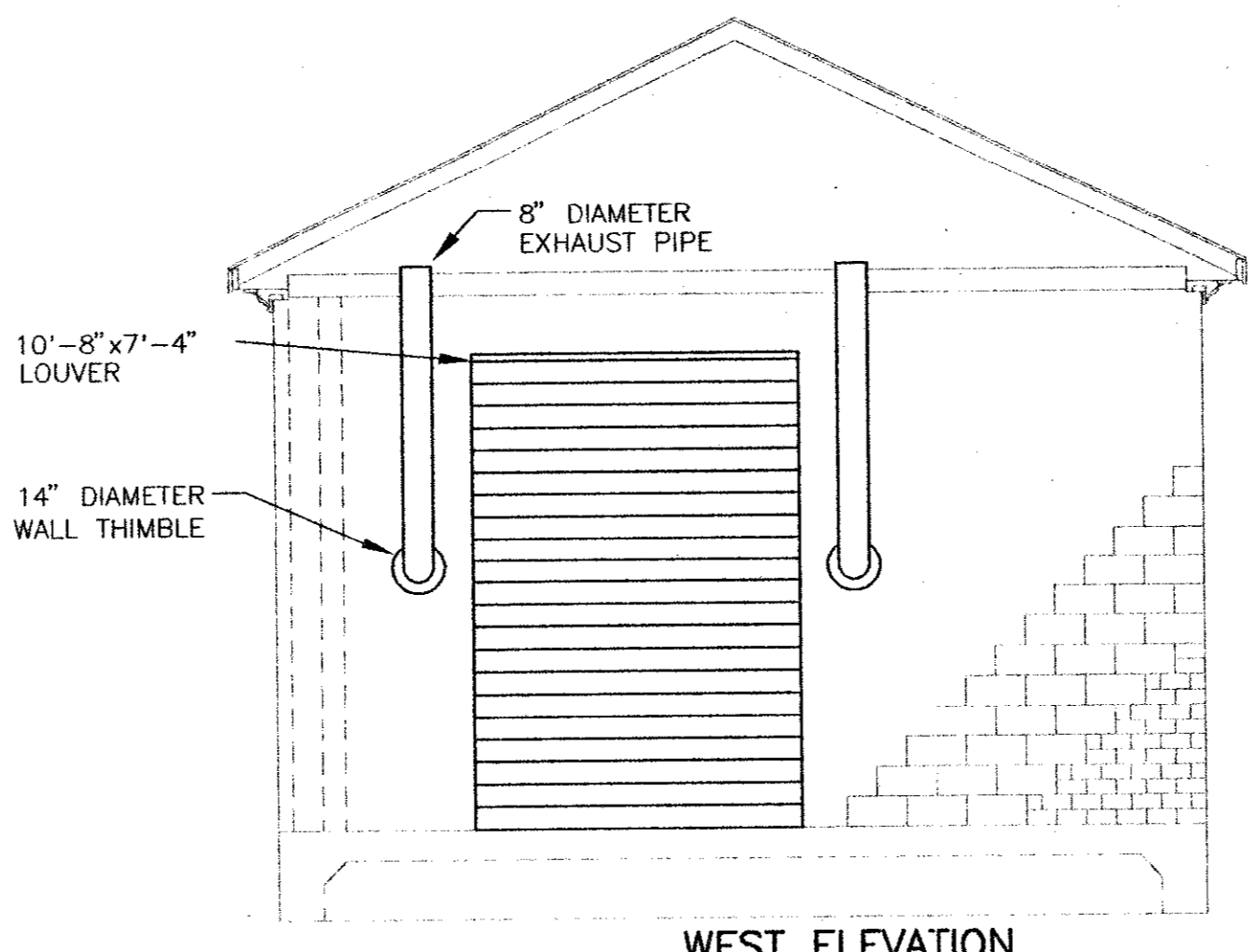
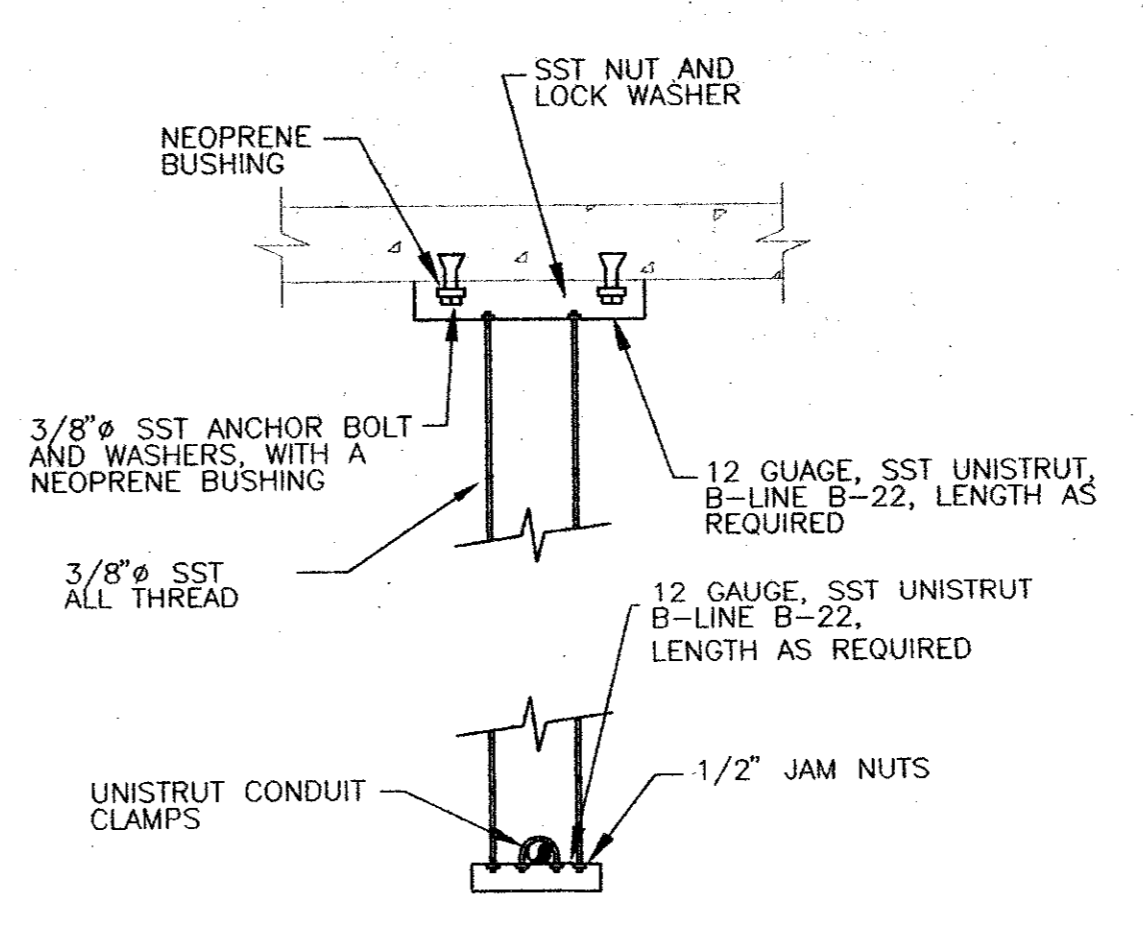


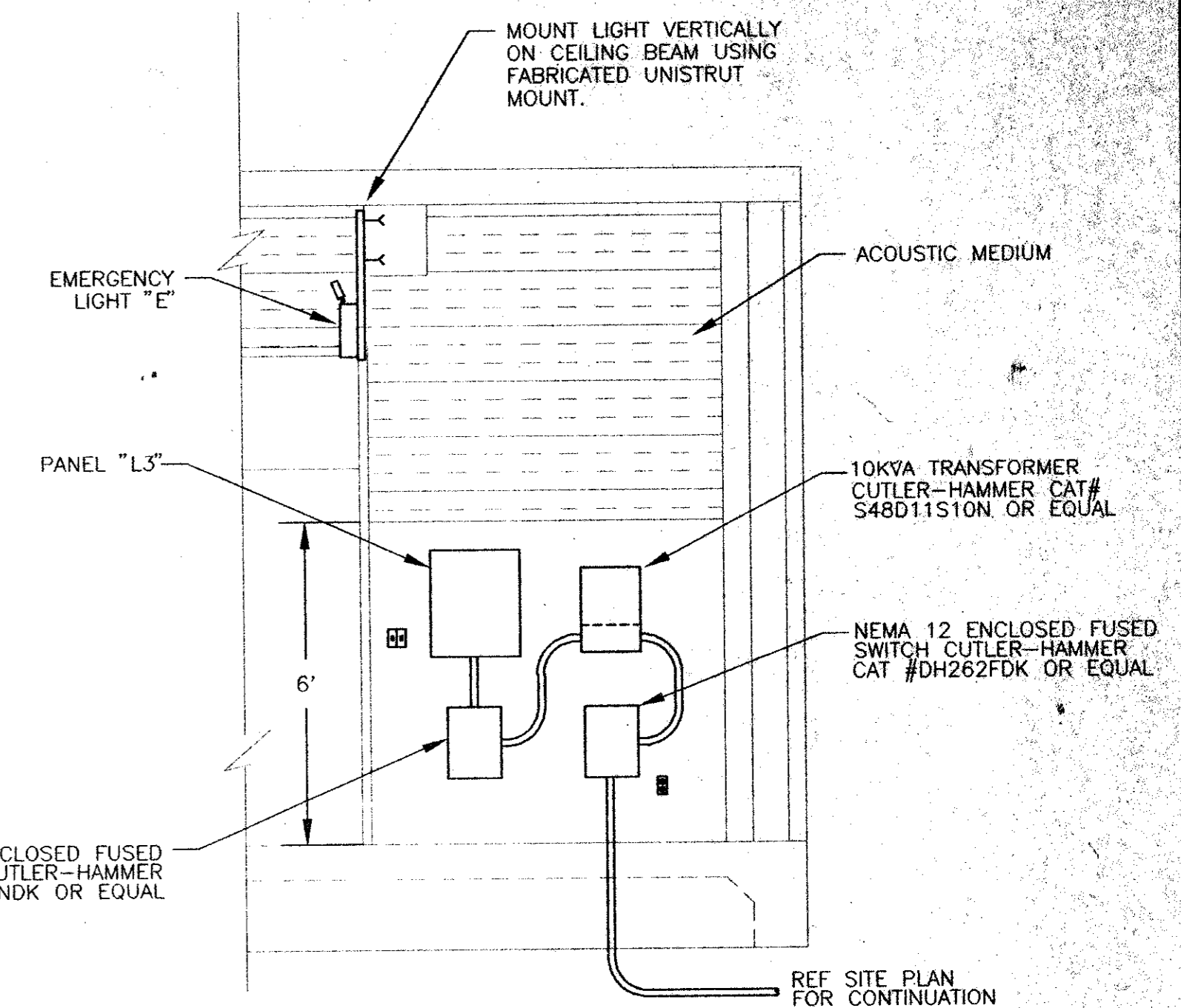
SOUTH ELEVATION
SCALE: 1/4"=1'-0"



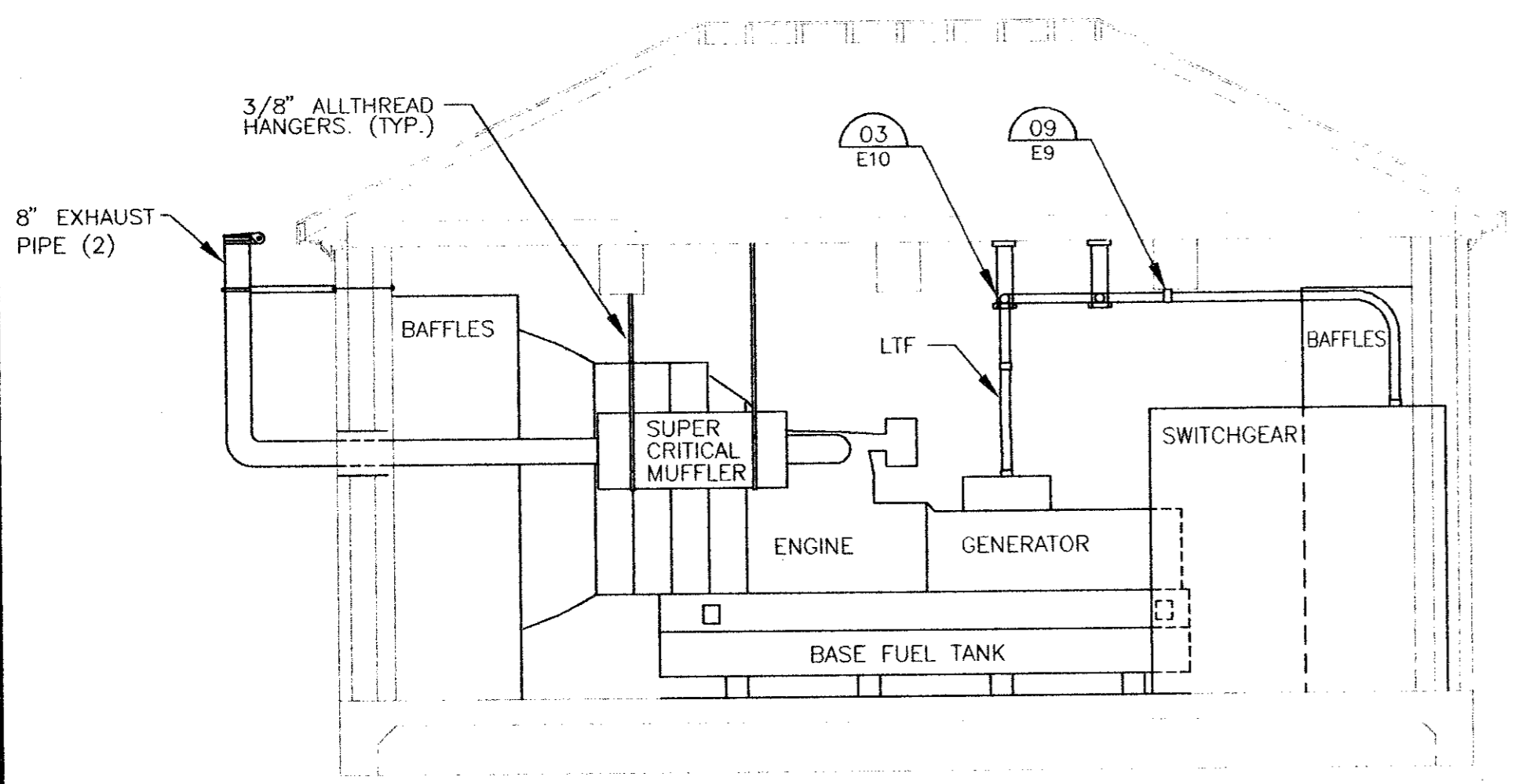
WEST ELEVATION
SCALE: 1/4"=1'-0"



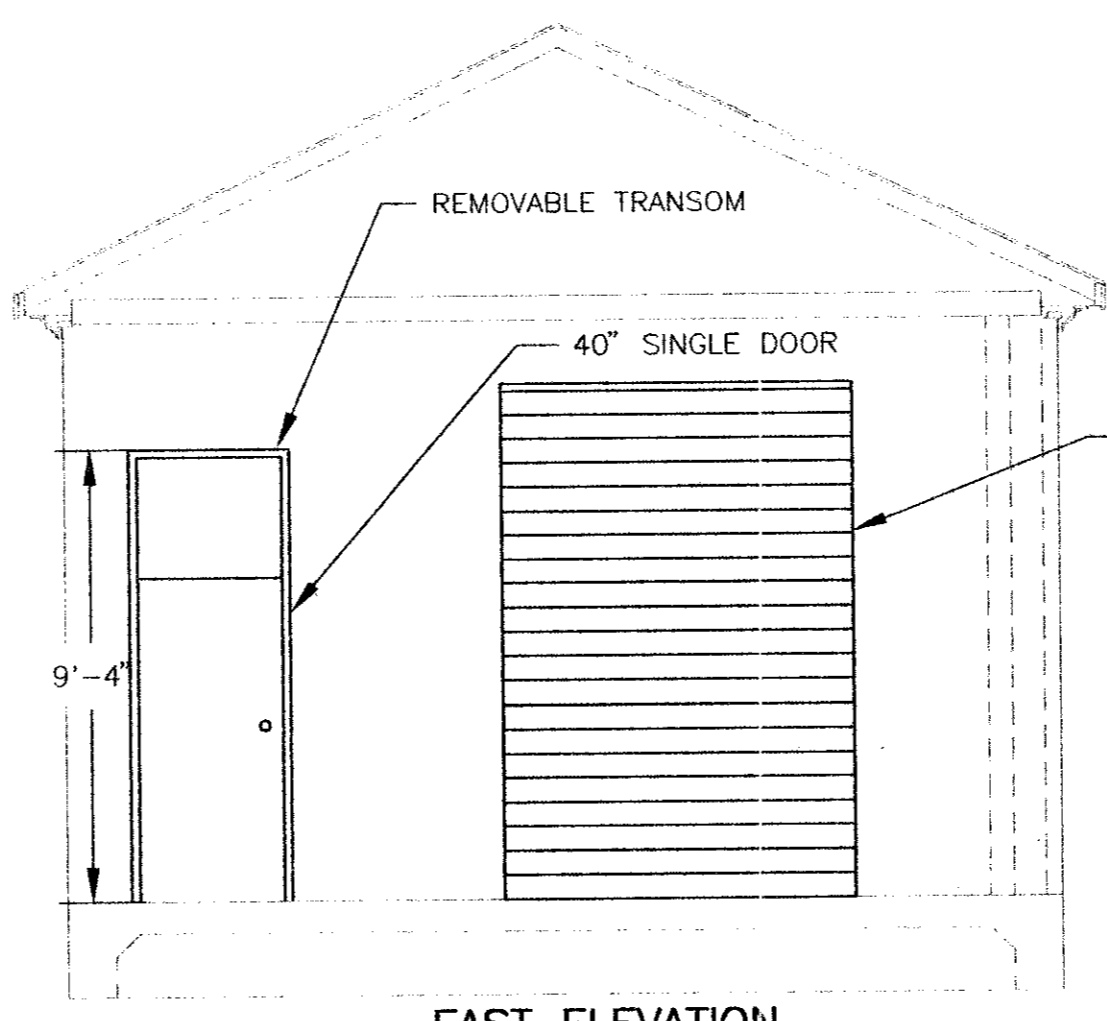
03 CONDUIT TRAPEZE SUPPORT
NOT TO SCALE



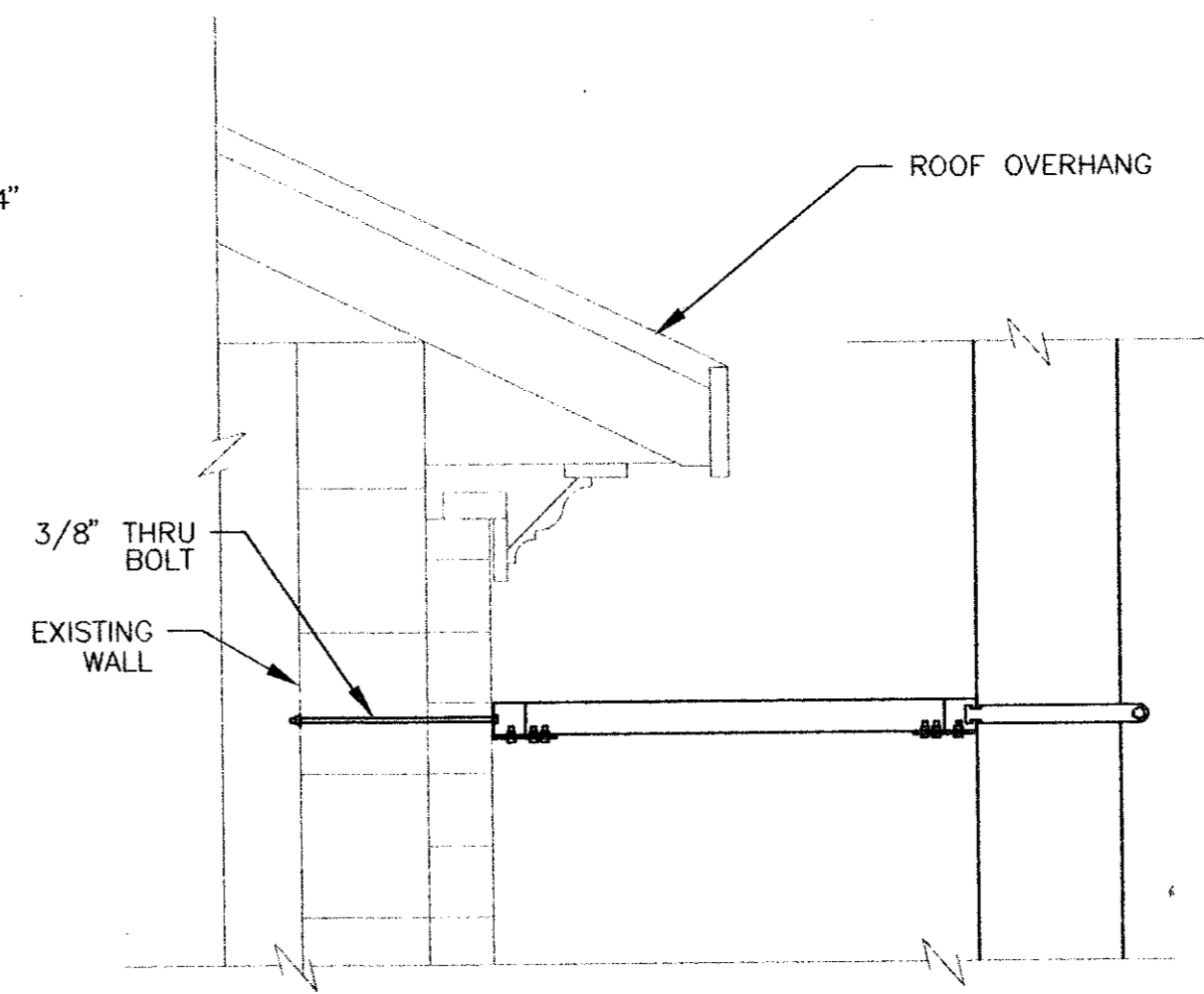
01 ELEVATION
SCALE: 3/8"=1'-0"



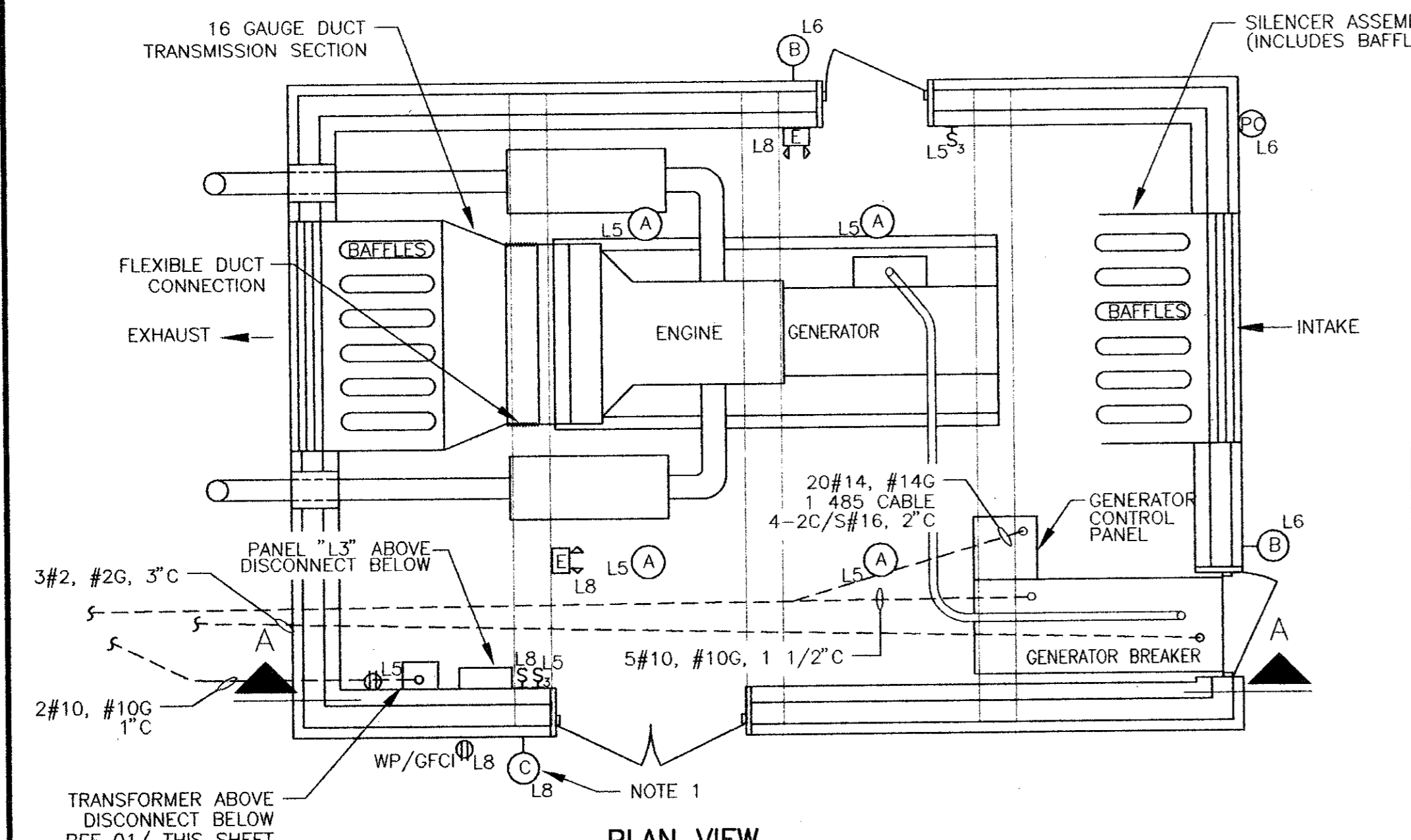
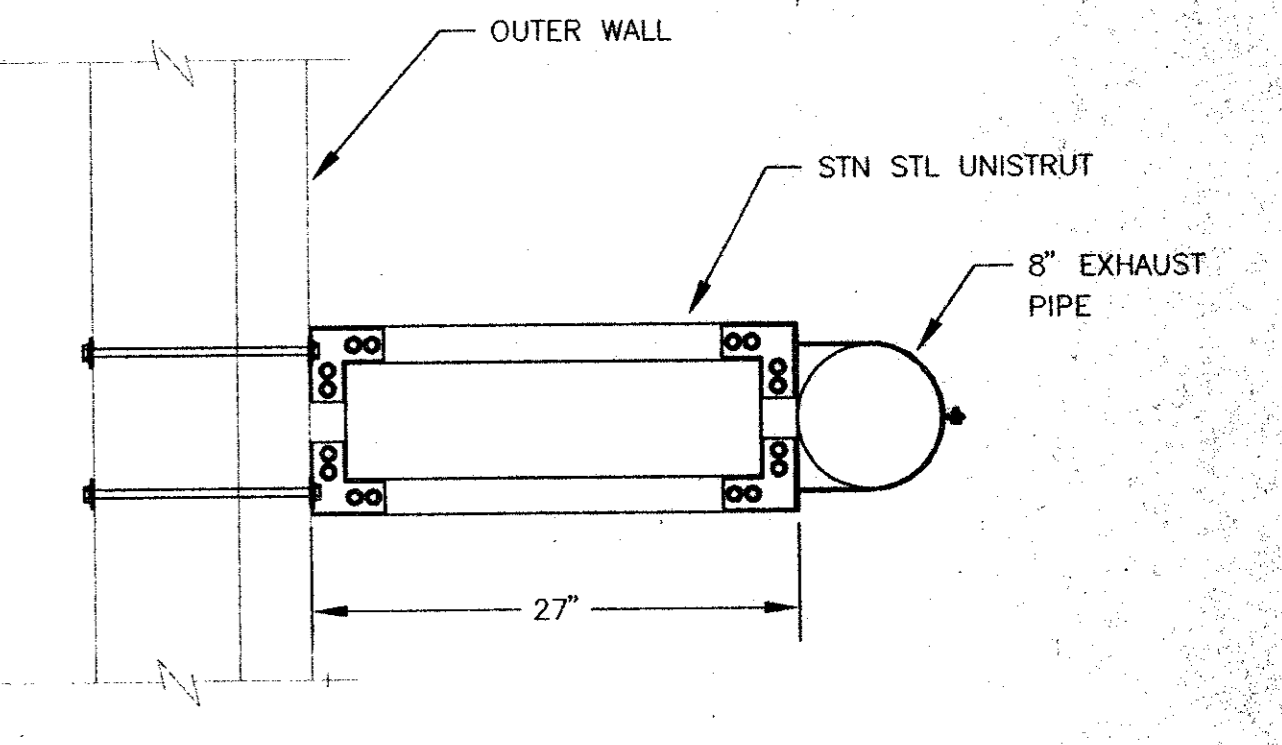
SECTION A-A
SCALE: 1/4"=1'-0"



EAST ELEVATION
SCALE: 1/4"=1'-0"



02 EXHAUST PIPE SUPPORT BRACKET
NOT TO SCALE



PLAN VIEW GENERATOR
SCALE: 1/4"=1'-0"

- NOTES:**
1. PROVIDE A PHOTOCELL MOUNTED 10' AFF FLUSH WITH WALL. THE PHOTOCELL SHALL BE CROUSE-HINDS #D2520 MOUNTED IN A FLUSH MOUNTED MASONRY BOX.
 2. A NUMBER BESIDE A CIRCUIT OUTLET INDICATES A PANELBOARD BRANCH CIRCUIT CONNECTOR. WHERE CONDUIT AND WIRE HAVE NOT BEEN SHOWN, THE CONTRACTOR SHALL FURNISH AND INSTALL WIRE AND CONDUIT AS REQUIRED AND MATERIALS AND INSTALLATION SHALL BE PER THE SPECIFICATIONS. CONDUIT SHALL BE CODE SIZED PER THE NEC, 3/4" MINIMUM, MINIMUM SIZE WIRE #12 UNLESS OTHERWISE NOTED.
 3. INSULATE MUFFLERS AND INTERIOR EXHAUST PIPING.
 4. 100W 20,000HR LAMP (#100A/IF/20M) BY SUPREME LIGHTING (800-922-6693) IS AVAILABLE FROM LIGHT BULB SOLUTIONS (214-651-9386).

PANEL "L-3" 240/120VAC 1Ø 100A MLO NEMA 12

WIRE	LOAD SERVED	BRKR	CKT	CKT	BRKR	LOAD SERVED	WIRE
2#12 #12G	CONTROL PNL/SPACE HTR	20/1	1	2	30/2	WATER JACKET FOR GEN	2#8 #8G
2#12 #12G	BATTERY CHGR FOR GEN	15/1	3	4			
2#12 #12G	INTERIOR LIGHTS	15/1	5	6	20/1	OUTDOOR LIGHTING	2#12 #12G
2#12 #12G	GENERATOR HEATER	20/2	7	8	20/1	OUTDOOR LTG/EMERGENCY	2#12 #12G
	SPARE	20/1	11	9	10	20/1	SPARE
	SPARE	20/1	13	12			
			15	14			
			17	16			
				18			

NEUTRAL GROUND

- NOTES:**
1. FURNISH AND INSTALL CUTLER-HAMMER BOX #YS204 WITH TRIM #LT204 OR EQUAL.
 2. RUN ALL CIRCUITS FOR THE GENERATOR IN ONE 1 1/2" C.

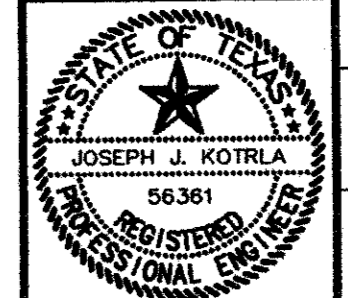
LIGHT FIXTURE SCHEDULE

MARK	DESCRIPTION	VOLTS	LAMPS	MANUFACTURER	CATALOG NUMBER	COMMENTS
A	INTERIOR LIGHT	120	175W MH	HOLOPHANE	BA17DMH12PUF1	
B	WALL MOUNT	120	100W	SUPREME	100A/IF/20M	
C	WALL MOUNT	120	100W MV	HOLOPHANE	WL2K100MV12B7F1	PROVIDE PHOTOCELL
E	EMGCY LT, SEALED BATTERY	12	50W TUN	HOLOPHANE	DM6C50TNS2F1	

These plans and related specifications were prepared for construction of this specific project only. Reuse of these documents is not permitted without written authorization of Shimek, Jacobs & Finklea, L.L.P.

VERIFY SCALE
Bar is one inch on original drawing. If not one inch on this sheet, adjust scale.

THESE DOCUMENTS ARE FOR BIDDING, CONSTRUCTION, AND PERMIT PURPOSES.
DATE: 2-10-98



E10

2-10-98 ADDENDUM 2 JJK
NO. DATE REVISION BY

TOWN OF ADDISON, TEXAS

**CELESTIAL ROAD PUMP STATION ADDITIONS
GENERATOR BUILDING**

SHIMEK, JACOBS & FINKLEA, L.L.P.
CONSULTING ENGINEERS
Dallas, Texas

DESIGNED BY: J.J.K. PROJECT: 97 180 SHEET NO. 15
DRAWN BY: C.C.C. DATE: JANUARY, 1998 OF SHEETS