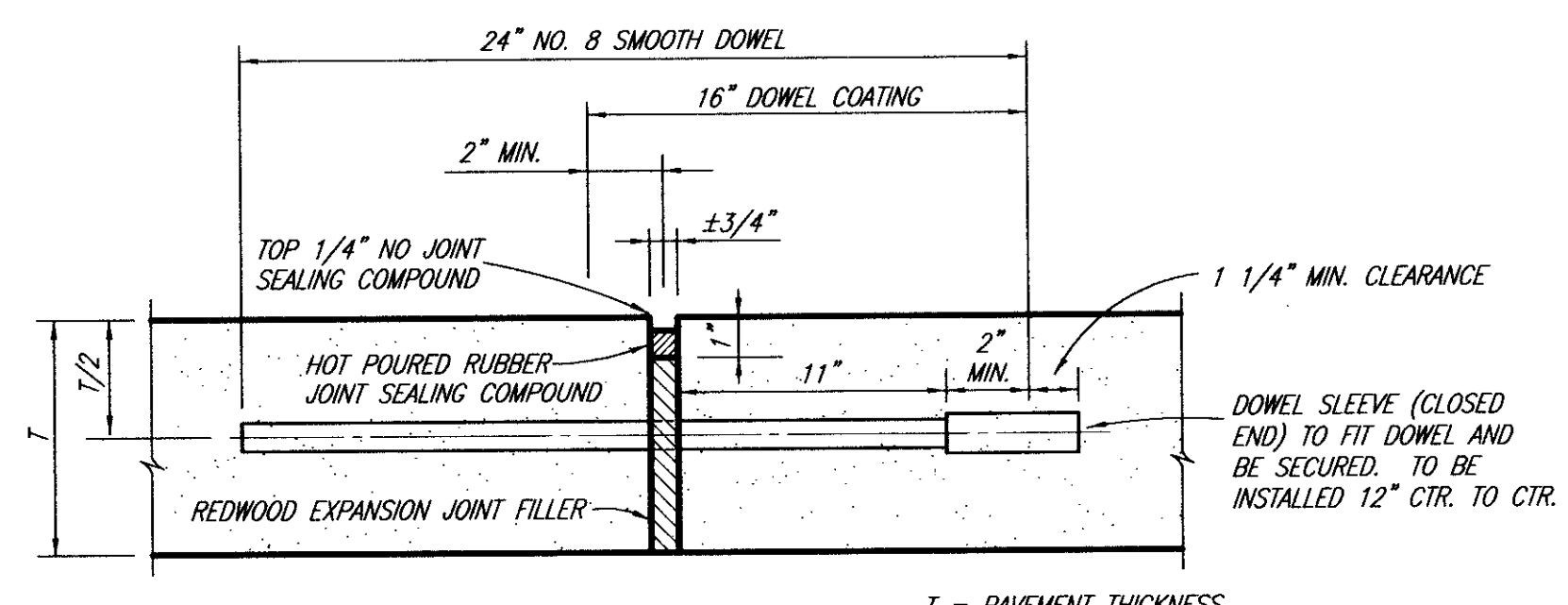
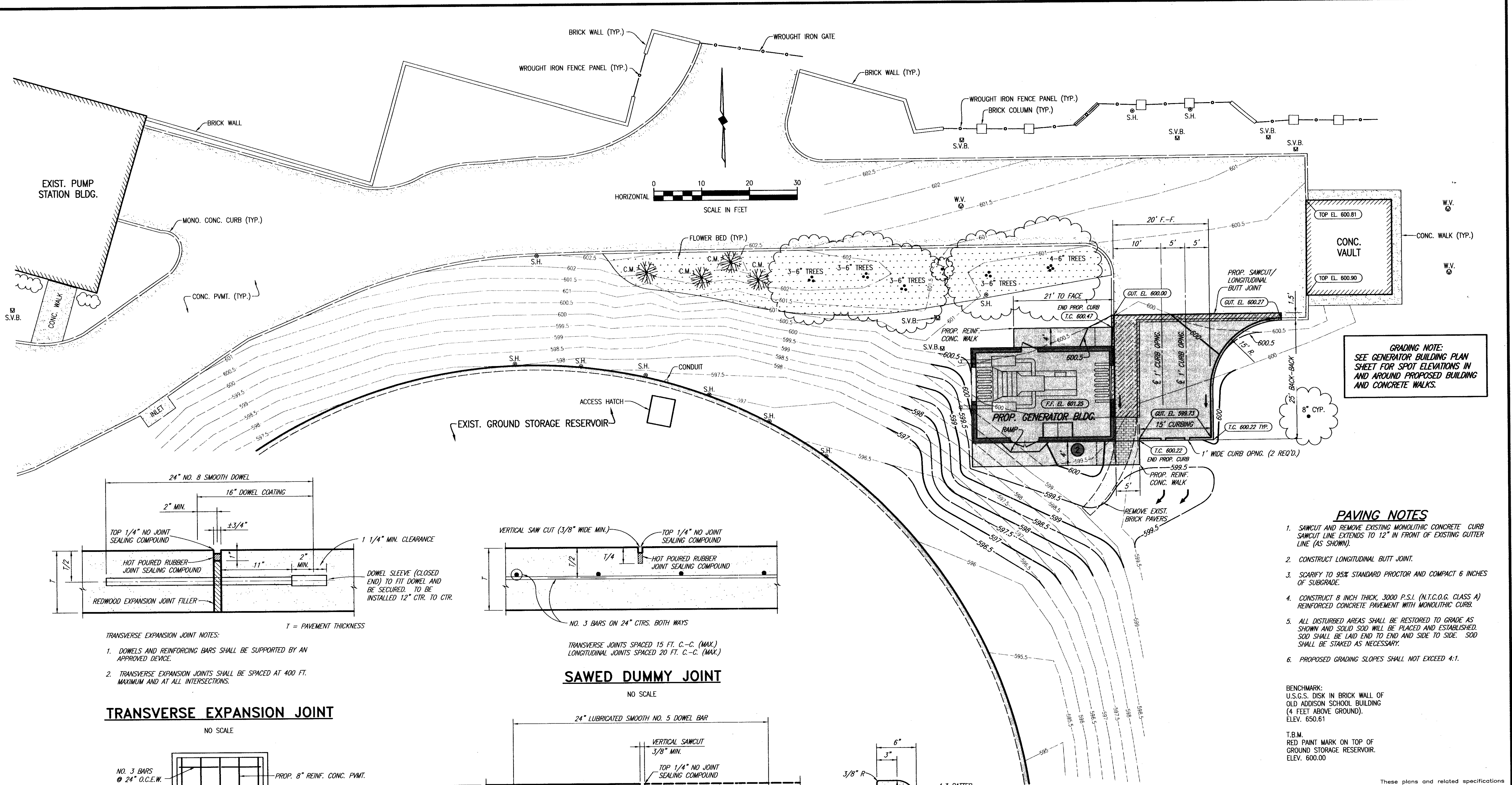
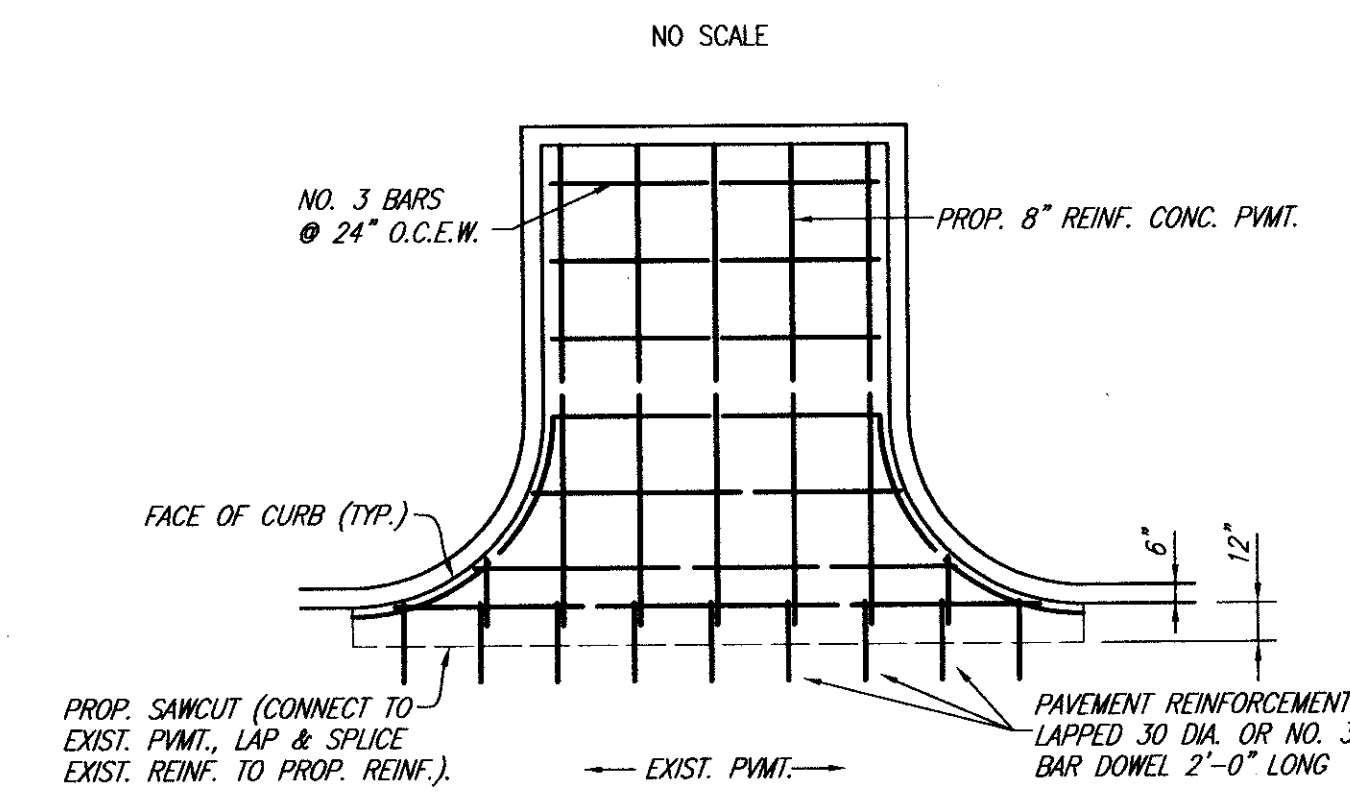


REVISIONS: 01/31/98 GAD 97180-04.DWG SCALE: 1"=10'
 BLOCKS: EXPAT, DRIVE, MONOCURB, BUTTJT, DUMMYJT

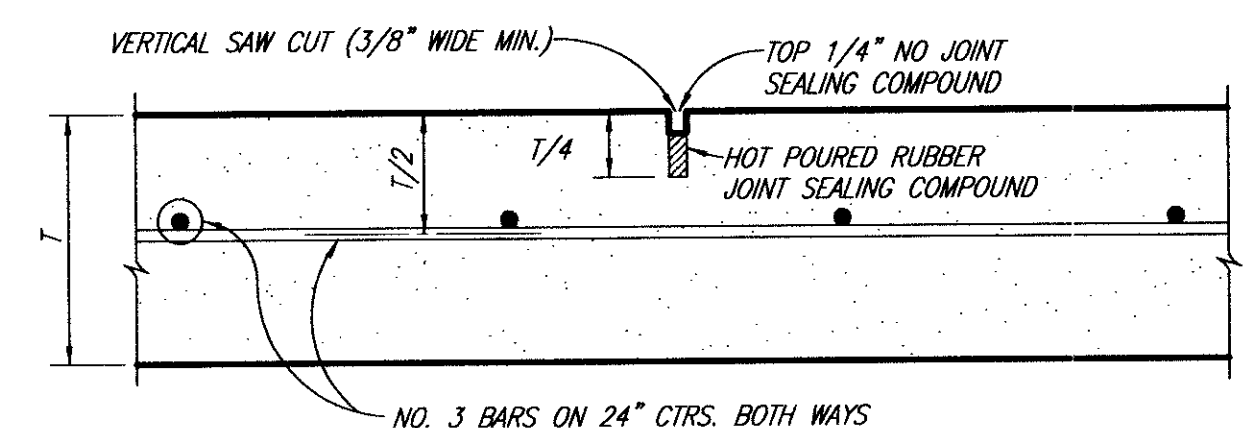


- TRANSVERSE EXPANSION JOINT NOTES:**
1. DOWELS AND REINFORCING BARS SHALL BE SUPPORTED BY AN APPROVED DEVICE.
 2. TRANSVERSE EXPANSION JOINTS SHALL BE SPACED AT 400 FT. MAXIMUM AND AT ALL INTERSECTIONS.

TRANSVERSE EXPANSION JOINT

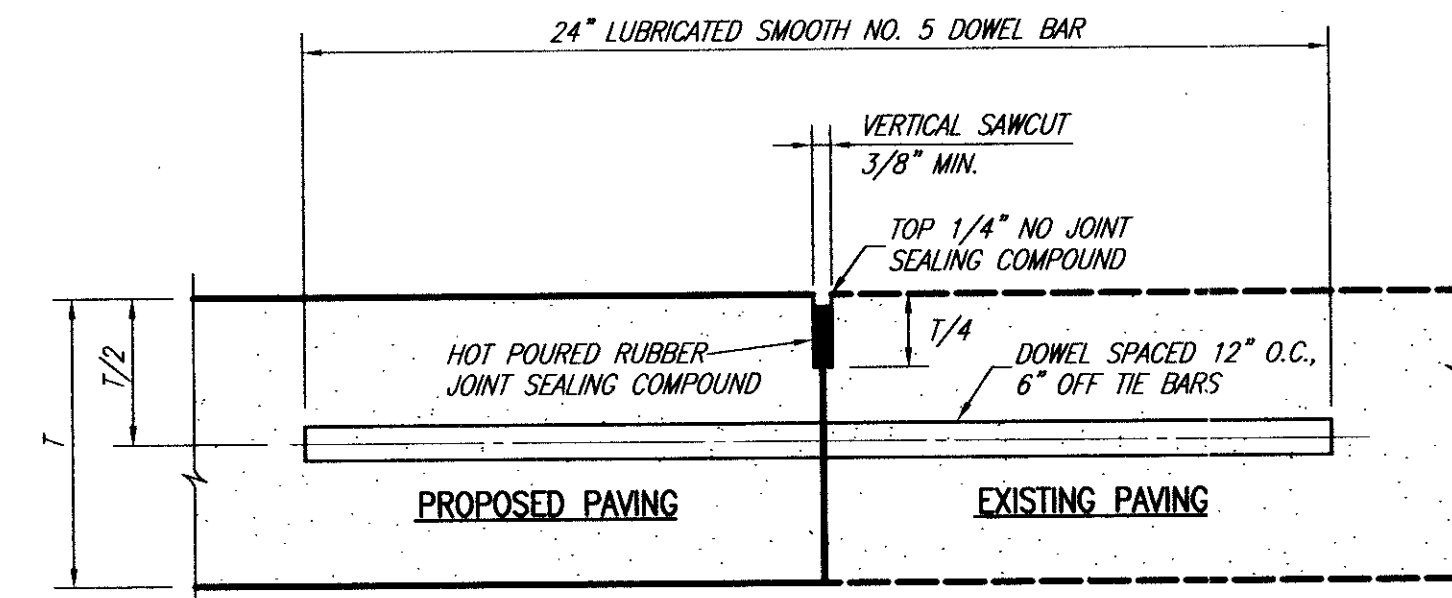


TYPICAL PAVEMENT REINFORCING PLAN



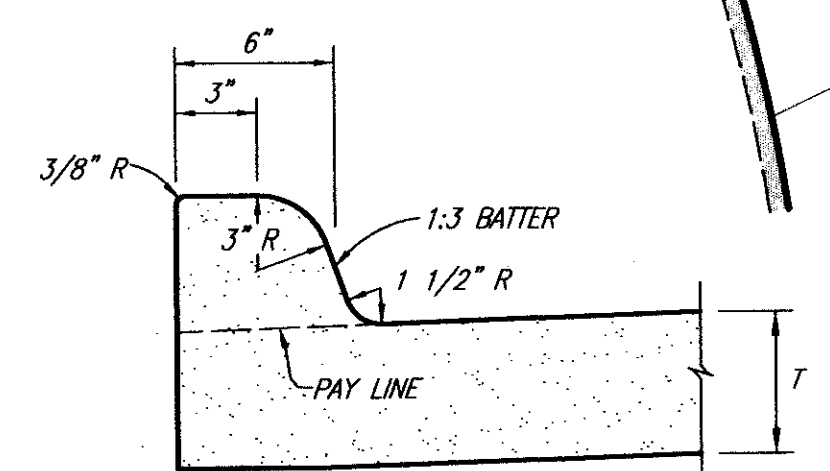
SAWED DUMMY JOINT

NO SCALE



LONGITUDINAL BUTT JOINT

NOT TO SCALE



INTEGRAL CURB

NO SCALE

- PAVING NOTES**
1. SAWCUT AND REMOVE EXISTING MONOLITHIC CONCRETE CURB SAWCUT LINE EXTENDS TO 12" IN FRONT OF EXISTING GUTTER LINE (AS SHOWN).
 2. CONSTRUCT LONGITUDINAL BUTT JOINT.
 3. SCARIFY TO 95% STANDARD PROCTOR AND COMPACT 6 INCHES OF SUBGRADE.
 4. CONSTRUCT 8 INCH THICK, 3000 P.S.I. (N.T.C.O.G. CLASS A) REINFORCED CONCRETE PAVEMENT WITH MONOLITHIC CURB.
 5. ALL DISTURBED AREAS SHALL BE RESTORED TO GRADE AS SHOWN AND SOLID SOD WILL BE PLACED AND ESTABLISHED. SOD SHALL BE LAID END TO END AND SIDE TO SIDE. SOD SHALL BE STAKED AS NECESSARY.
 6. PROPOSED GRADING SLOPES SHALL NOT EXCEED 4:1.

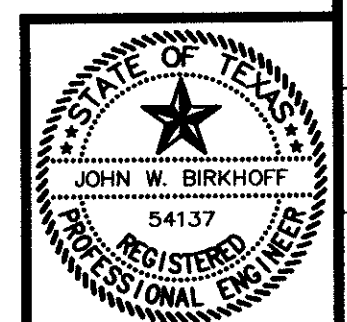
BENCHMARK:
 U.S.G.S. DISK IN BRICK WALL OF
 OLD ADDISON SCHOOL BUILDING
 (4 FEET ABOVE GROUND).
 ELEV. 650.61

T.B.M.
 RED PAINT MARK ON TOP OF
 GROUND STORAGE RESERVOIR.
 ELEV. 600.00

These plans and related specifications were prepared for construction of this specific project only. Reuse of these documents is not permitted without written authorization of Shimek, Jacobs & Finklea, L.L.P.

THESE DOCUMENTS ARE FOR BIDDING, CONSTRUCTION, AND PERMIT PURPOSES.

John W. Birkhoff
 DATE: 2/11/98



TOWN OF ADDISON, TEXAS

**CELESTIAL ROAD PUMP STATION ADDITIONS
 PAVING IMPROVEMENTS**

SHIMEK, JACOBS & FINKLEA, L.L.P.
 CONSULTING ENGINEERS
 Dallas, Texas

DESIGNED BY: J.W.B.	PROJECT: 97 180	SHEET NO. 4A
DRAWN BY: E.W.H.	DATE: JANUARY 1998	OF 14 SHEETS