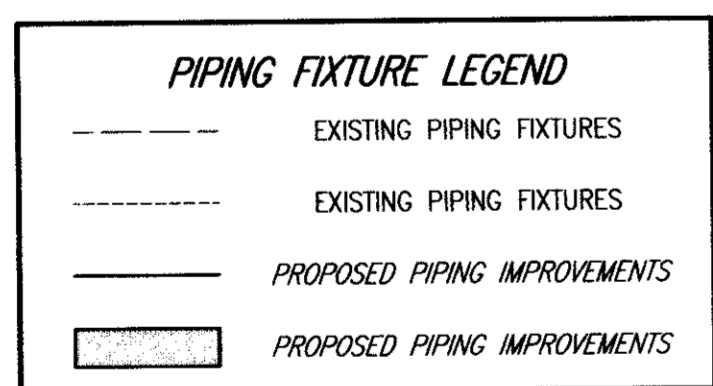


**PIPING FIXTURE LEGEND**

LETTER	PIPE	JOINT	DESCRIPTION
A	-	-	CONNECT TO EXISTING 20" PIPING
B	-	-	REMOVE EXISTING 20" BLIND FLANGE
C	-	-	PUMP BASE PLATE (SEE NOTE 2)
D	-	-	OMITTED
E	STEEL	FLG.	20"x12" FABRICATED 90° REDUCING BEND
F	STEEL	FLG.-P.E.	12" PIPE SPOOL
G	-	-	THRUST HARNESS ASSEMBLY (SEE DETAIL)
H	-	-	PRESSURE GAUGE ASSEMBLY (SEE DETAIL)
I	-	-	12" BUTTERFLY VALVE (SEE NOTE 3)
J	STEEL	FLG.	12"x4" TEE
K	STEEL	FLG.	4" BLIND FLANGE W/ 2" FLANGED NIPPLE
L	-	-	2" GATE VALVE
M	-	-	2" AIR + VACUUM RELEASE VALVE
N	-	-	12" DISCHARGE VERTICAL TURBINE PUMP W/ MOTOR
O	-	-	VERTICAL TURBINE PUMP IMPELLER
P	-	-	SADDLE-TYPE PIPE SUPPORT



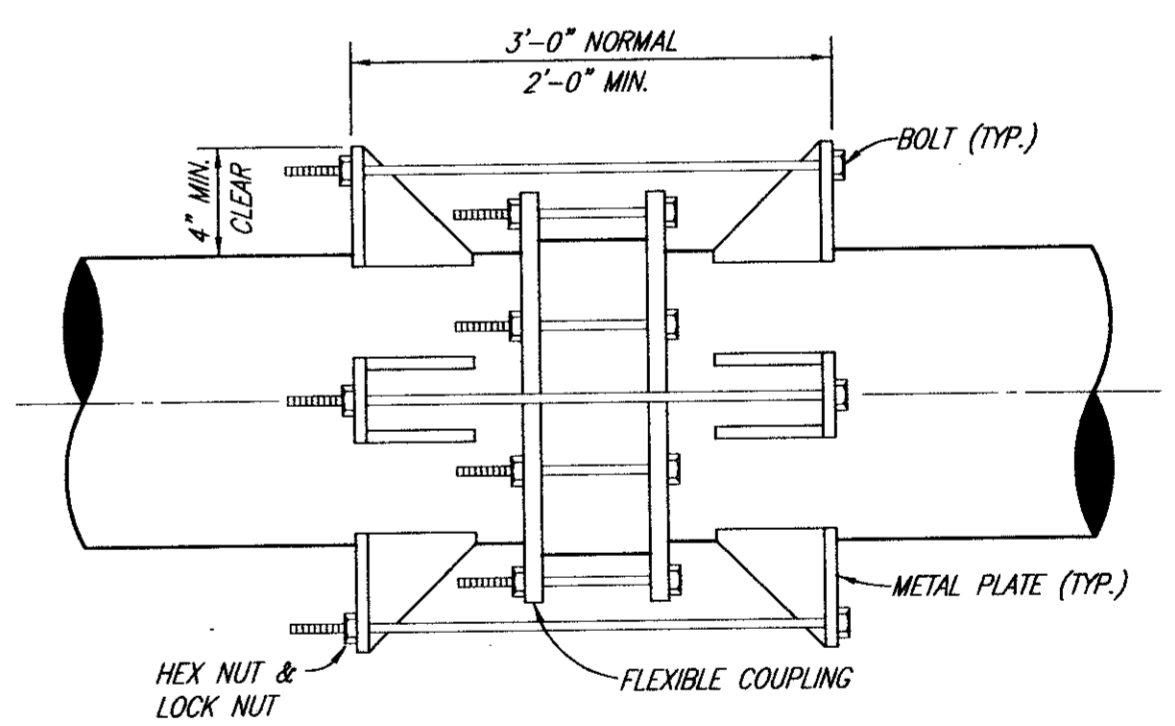
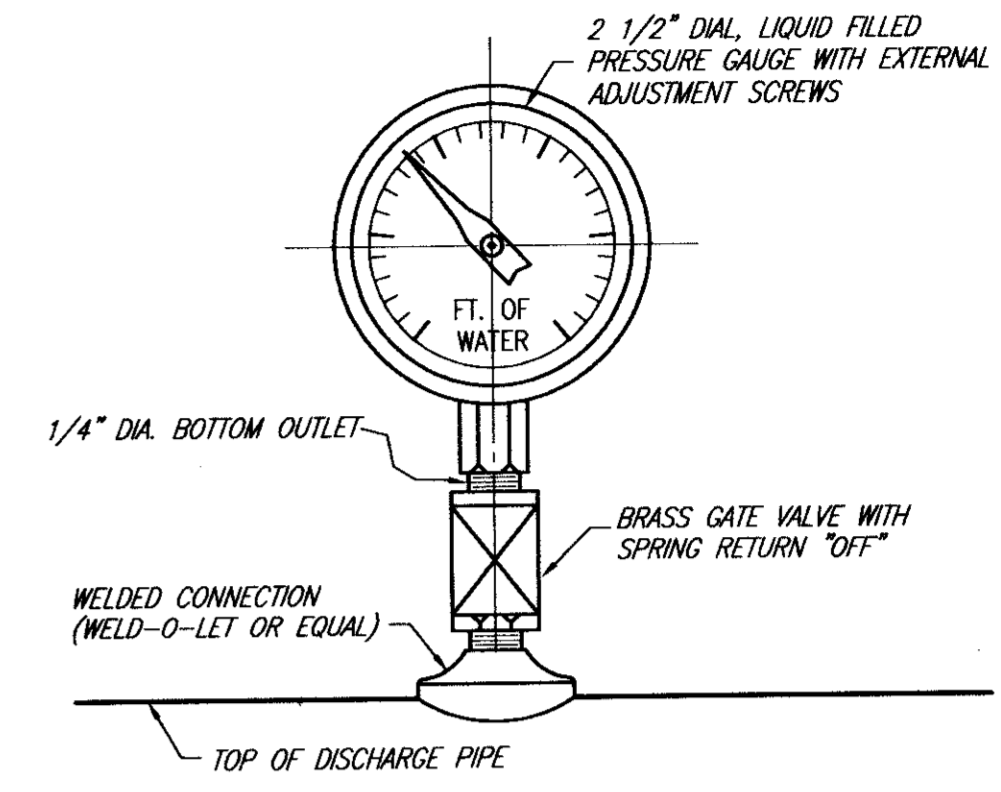
BENCHMARK:  
U.S.G.S. DISK IN BRICK WALL OF  
OLD ADDISON SCHOOL BUILDING  
(4 FEET ABOVE GROUND).  
ELEV. 650.61

T.B.M.  
RED PAINT MARK ON TOP OF  
GROUND STORAGE RESERVOIR.  
ELEV. 600.00

**PIPING SECTION B-B**  
PROPOSED PUMP 4 - MIN. 2.8 M.G.D. ▲  
COLUMN LENGTH: 37.90 FEET  
FROM DISCHARGE CENTERLINE  
SCALE: 1/4" = 1'-0"

**GENERAL NOTES**

- CONTRACTOR SHALL FIELD VERIFY ALL DIMENSIONS PRIOR TO COMMENCING CONSTRUCTION.
- CONTRACTOR SHALL FURNISH & INSTALL NECESSARY PUMP BASE PLATE TO SUPPORT PUMP AND TO ATTAIN PROPER DISCHARGE HEADER CENTERLINE ELEVATION. FINISHED PUMP AND BASE PLATE SHALL BE WATERTIGHT AND NOT ALLOW ANY SEEPAGE INTO SUCTION HEADER WELL.
- PROPOSED BUTTERFLY VALVES SHALL BE MOUNTED ON A SADDLE TYPE PIPE SUPPORT.
- PRESSURE GAUGES SHALL BE 2 1/2" FACE DIAMETER, BE LIQUID FILLED, AND HAVE EXTERNAL ADJUSTMENT SCREWS FOR CALIBRATION. GAUGES SHALL BE MOUNTED TO GATE VALVE, WHICH THEN IS CONNECTED TO DISCHARGE HEADER PIPE.
- ALL DRAINS FROM SUMP PUMP, PUMP CONTROL VALVE AND AIR RELEASE VALVE SHALL BE RUN INTO EXISTING FLOOR DRAINS. DRAIN LINES SHALL BE SCHEDULE 40 P.V.C. PIPE, 2" MIN. DIAMETER AND SHALL BE SECURELY ATTACHED.
- PIPING AND FITTINGS SHALL BE STEEL OR DUCTILE IRON PIPE. ALL PIPE SHALL BE CEMENT MORTAR LINED. WORKING PRESSURE IS 120 p.s.i.
  - A. STEEL PIPE AND FITTINGS SHALL BE IN ACCORDANCE WITH THE FOLLOWING A.W.W.A. STANDARDS:  
C-200  
C-205  
C-206  
C-207  
C-208  
M-11
  - B. DUCTILE IRON PIPE AND FITTINGS SHALL BE IN ACCORDANCE WITH THE FOLLOWING A.W.W.A. STANDARDS:  
C-151  
C-150  
C-115  
C-111  
C-110  
C-105  
C-104
  - C. ALL PIPING AND FITTINGS SHALL BE FROM A SINGLE MANUFACTURER.
  - D. PIPING SHALL HAVE FLANGED ENDS, EXCEPT AT THRUST HARNESS.
- REMOVABLE SKYLIGHTS MAY BE USED TO INSTALL PUMPS AND MOTORS. IF USED, THE CONTRACTOR SHALL REPLACE ALL FLASHING AND MAKE UNITS WATERTIGHT. AFTER INSTALLATION OF THE SKYLIGHTS, A WATER HOSE SHALL BE TAKEN TO THE ROOF TO CHECK INITIAL WATERTIGHTNESS OF INSTALLATION.



These plans and related specifications were prepared for construction of this specific project only. Reuse of these documents is not permitted without written authorization of Shimek, Jacobs & Finklea, L.L.P.

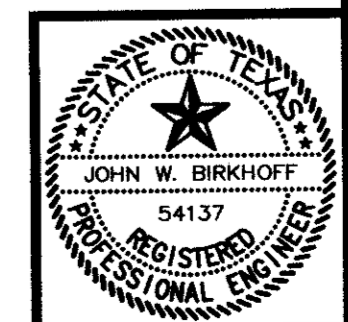
**TOWN OF ADDISON, TEXAS**

CELESTIAL ROAD PUMP STATION ADDITIONS  
**PIPING SECTION B-B**

**SHIMEK, JACOBS & FINKLEA, L.L.P.**  
CONSULTING ENGINEERS  
Dallas, Texas

DESIGNED BY: J.W.B. PROJECT: 97 180 SHEET NO. 3a  
DRAWN BY: E.W.H. DATE: JANUARY 1998 OF 14 SHEETS

THESE DOCUMENTS ARE FOR BIDDING, CONSTRUCTION, AND PERMIT PURPOSES.  
DATE: 2/11/98



REVISION 02/12/98 GAD 97180-03.DWG SCALE: 1/4"=1'-0" BLOCKS: GENNOTES, LEG-PIPE, PRGAUGE, THWELD