

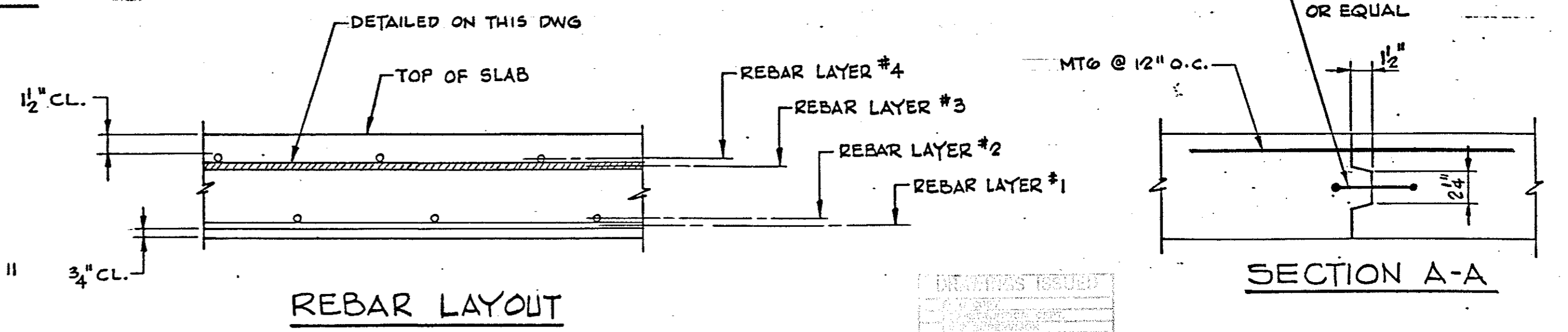
**ROOF SLAB GRID SCHEDULE (LAYER NO. 3)**

BUNDLE MK	REINR. PER BUNDLE NO.	SIZE	LENGTH	NO. OF TOTAL BUNDLES	NO. OF BARS	ORDER	BAR WEIGHT			LOCATION	SKETCH
							#5	#4	#3		
CT2A	3	#5	14'-0"	14	42	45	657			LINE D & END BAYS LINE 1, 8, A & J	
CT5	10	#5	14'-0"	45	450	460	6717			INTERIOR BAYS	
CT6	9	#5	10'-4"	53	477	490	5279			INTERIOR BAYS & END BAYS OF 1, 2, A & J	
CT10	3	#5	20'-11"	11	33	35	764			LINE G, ID & 8D	
CT11	20	#5	14'-0"	4	80	84	1227			END BAY OF B & H @ 45°	
CT12	9	#5	14'-0"	8	72	76	1110			END BAYS OF LINE 1, 2, A & J	
CT13	8	#5	14'-0"	12	96	100	1460			LINE A, J, 1 & 2 INTERIOR BAYS	
CT14	8	#5	10'-4"	12	96	100	1078			LINE A, J, 1 & 2 INTERIOR BAYS	
MT2	11	#4	11'-1"	78	858	875	6476			INTERIOR BAYS	
MT5	3	#4	19'-6"	14	42	44	573			LINE G & LINE D ONLY	
MT6	260	#4	4'-0"	1	260	270	721			AT CONSTRUCTION JOINT	
MT7	136	#4	30'-0"	1	136	140	2806			CONT. CIRC. REINF.	
<b>TOTAL WEIGHT</b>							18292	10576			

**PART ROOF FRAMING PLAN**

- NOTES:**
- REINFORCING STEEL TO CONFORM TO ASTM A615, GRADE 60.
  - FOR HATCH, VENT & SONIC LEVEL TRANSMITTER DETAILS & ADD'L REINF. SEE DWG TEX. 83-007-12
  - FOR INLET PIPE SEE DWG TEX. 83-007-6
  - FOR TYP MIDDLE STRIP & COLUMN SECTIONS SEE DWG TEX. 83-007-12
  - REINFORCING BARS DETAILED ON THIS DWG ARE FOR LAYER #3 (SEE REBAR LAYOUT, THIS DWG)
  - FOR OTHER LAYERS SEE DWGS TEX. 83-007-8, -9 & 11
  - REINF. MARKED WITH SUFFIX "A" TO BE PLACED NEAR THE COLUMN.
  - MK CT1, CT3, CT4, CT7, CT8 & CT9 NOT USED  
MK MT1, MT3 & MT4 NOT USED

- FORMWORK NOTES:**
- FORMWORK DESIGN AND RESHORING SHALL BE IN ACCORDANCE WITH ACI 347, LATEST EDITION.
  - FORMS TO REMAIN UNTIL SLAB REACHES DESIGN STRENGTH BUT NOT LESS THAN 7 DAYS UNLESS RESHORING IS USED.
  - SLAB BETWEEN CONSTRUCTION JOINT AND COLUMNS IS NOT DESIGNED FOR CANTILEVER ACTION. FORMWORK IN THIS AREA MUST REMAIN UNTIL ADJACENT SLAB IS CAST AND HAS ACHIEVED FULL STRENGTH.



**REVISIONS**

NO.	DATE	DESCRIPTION	BY	CKD

**PRELOAD**

839 STEWART AVENUE, GARDEN CITY, NEW YORK, 11530

THIS DRAWING IS THE PROPERTY OF THE PRELOAD COMPANY, INC. AND/OR PRELOAD TECHNOLOGY, INC. AND IS SUBJECT TO RETURN ON DEMAND. IT CONTAINS FEATURES OF DESIGN WHICH ARE FULLY COVERED BY PATENTS AND PATENTS PENDING AND COPYRIGHTS. IT IS SUBMITTED FOR USE ONLY IN CONNECTION WITH PROPOSALS OR CONTRACTS OF PRELOAD OR ITS LICENSEES, UPON THE EXPRESS CONDITION THAT IT MAY NOT BE USED ON ANY OTHER DIFFERENT PROJECTS WITHOUT PRIOR APPROVAL OF PRELOAD.

**WORKING DRAWING**

ONE G.O.M.G. GROUND STORAGE RESERVOIR  
 ADDISON, TEXAS  
 ROOF SLAB REINFORCING  
 LAYER NO. 3

DRAWN: E	SCALE:	CONTRACT NUMBER: 86 PE 004
DESIGNED: RAO	APPROVED:	DRAWING NUMBER: 83-007-10
CHECKED: FP	DATE: 4/24/86	