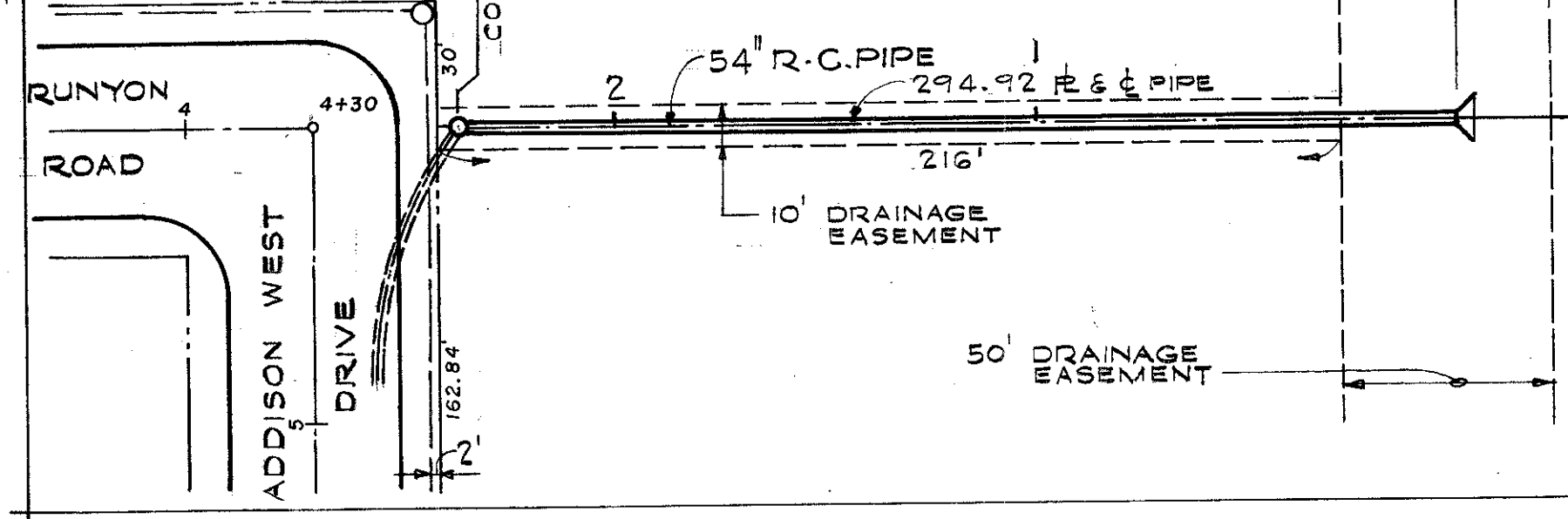
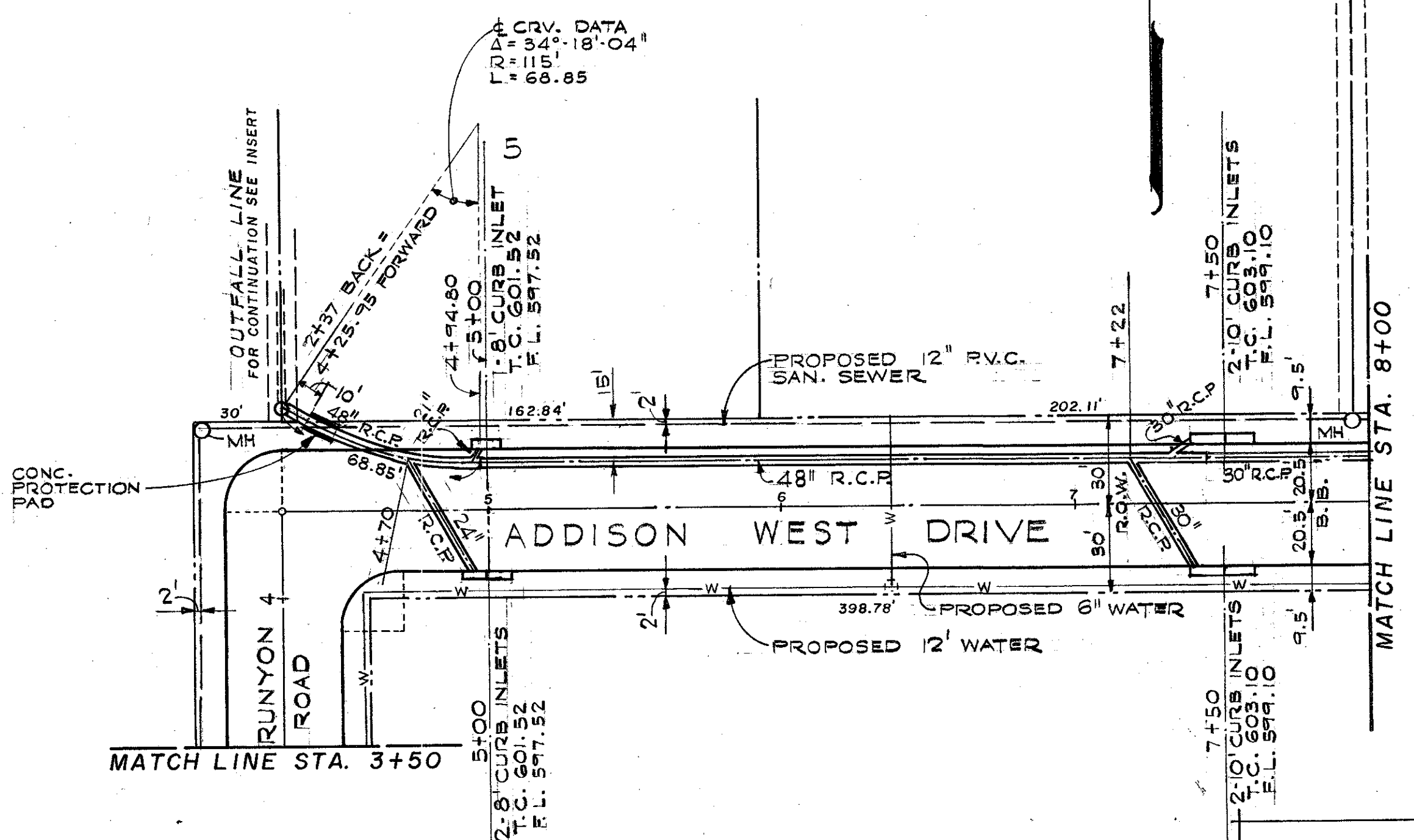
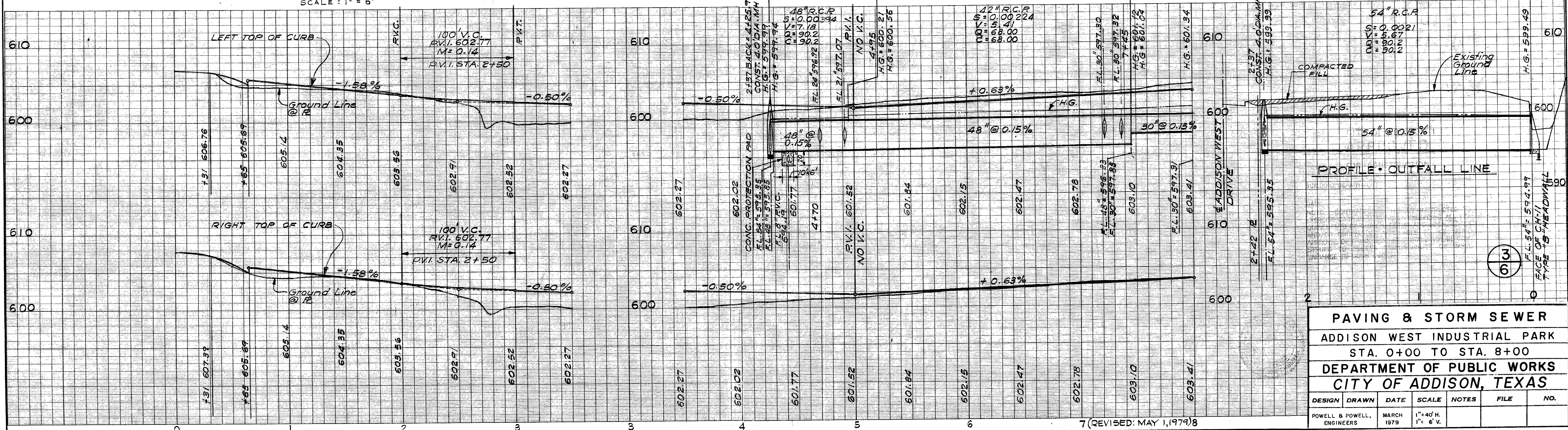


TYPICAL PAVING SECTION
 SCALE: 1" = 6'



INSERT
 OUTFALL LINE
 SCALE: 1" = 40'



PAVING & STORM SEWER
 ADDISON WEST INDUSTRIAL PARK
 STA. 0+00 TO STA. 8+00
 DEPARTMENT OF PUBLIC WORKS
 CITY OF ADDISON, TEXAS

DESIGN	DRAWN	DATE	SCALE	NOTES	FILE	NO.
POWELL & POWELL, ENGINEERS		MARCH 1979	1" = 40' H. 1" = 6' V.			

3
 6