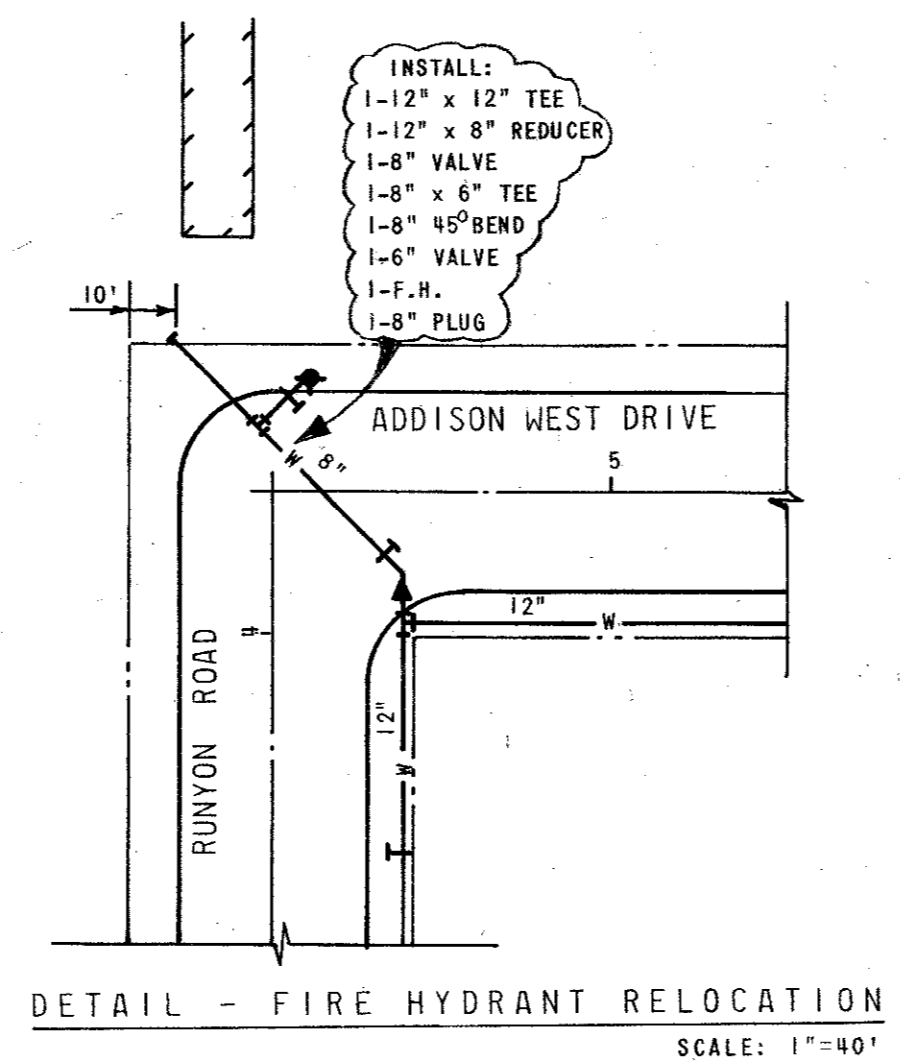
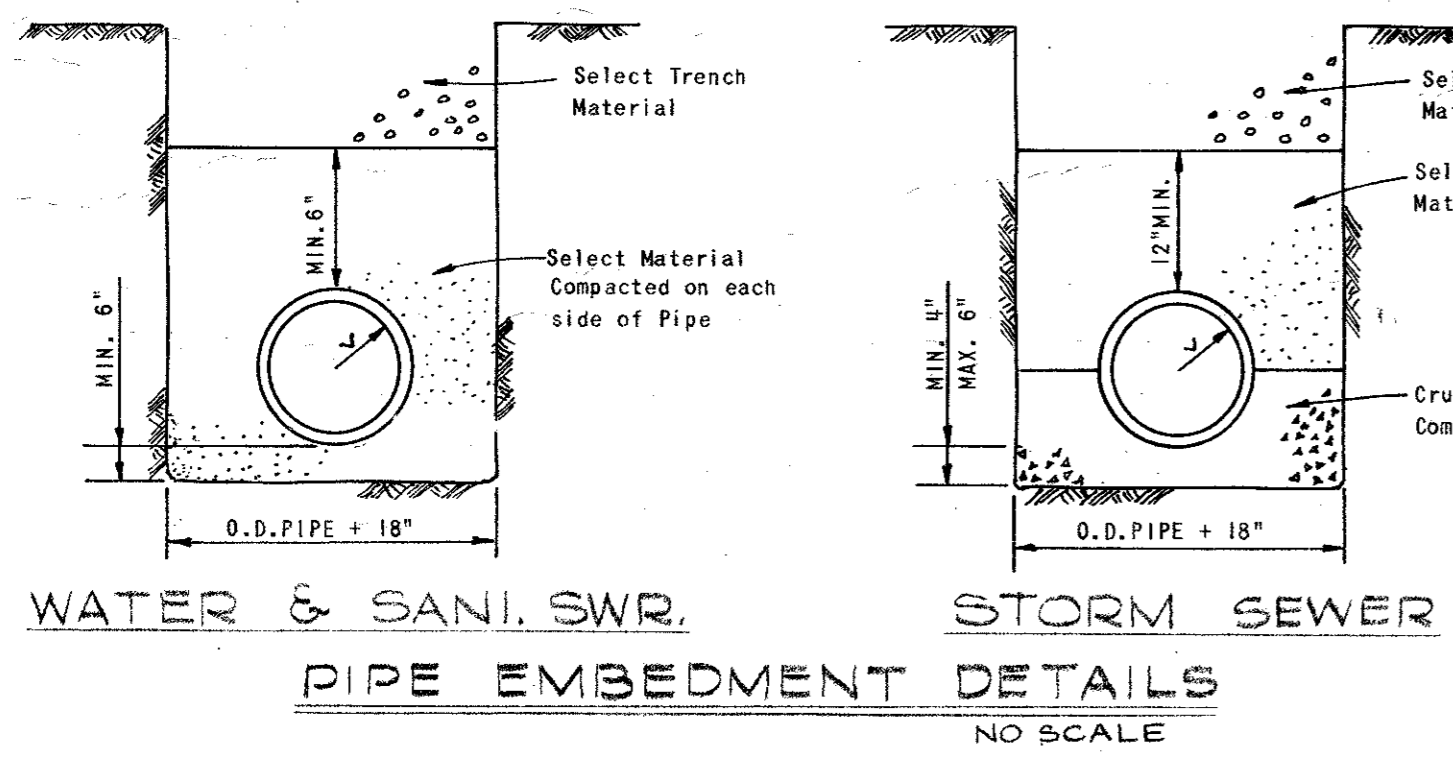
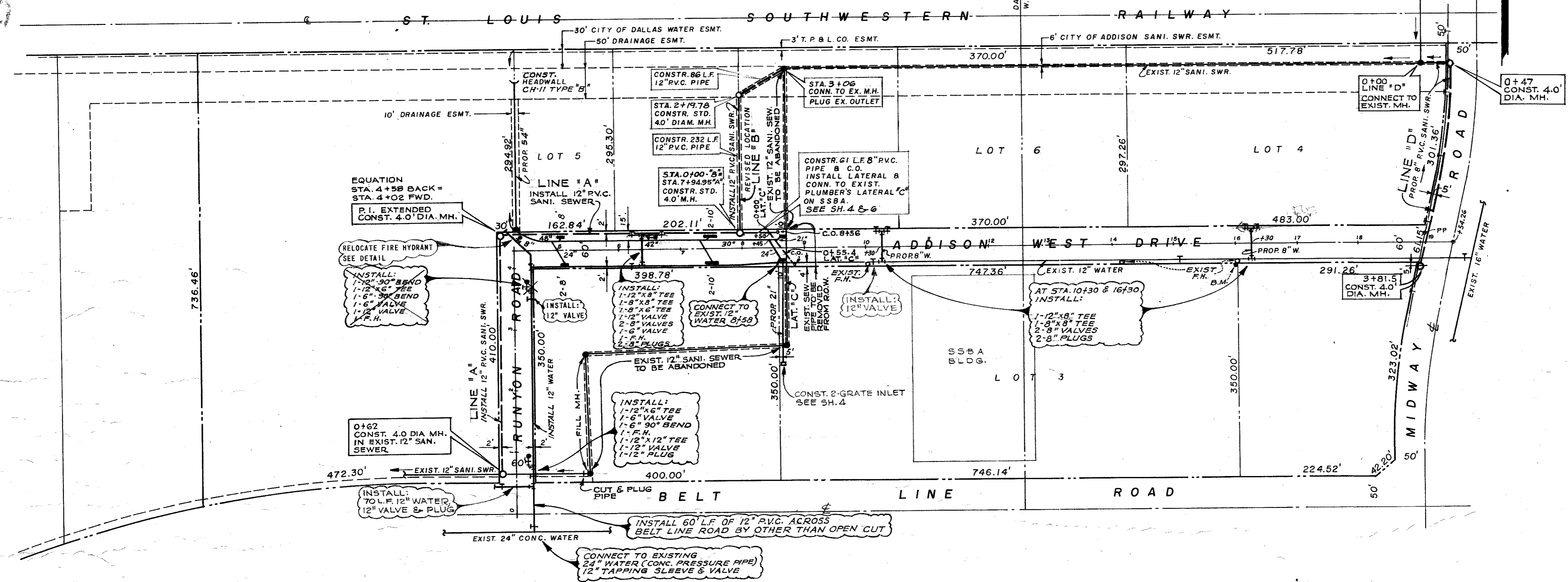


132-1

DAVID MYERS SURVEY - ABST. NO. 923
W. H. WITT SURVEY - ABST. NO. 1609



BENCH MARK: TOP OF CURB NORTHEAST CORNER OF CONCRETE PARKING LOT.
ON SSBA PROPERTY. ELEV. 615.74.

5
6

SUBDIVISION: ADDISON WEST INDUSTRIAL PARK

DESIGNED: Powell & Powell, Engineers Date: _____

R.O.W. APPROVED: _____ Date: _____

ENGINEER OF DESIGN: Water Utilities Department Date: _____

CONTRACT NO. _____

REVISED JUNE 6, 1979 TO SHOW RELOCATION
OF FIRE HYDRANT.
REVISED: MAY 1, 1979

CITY OF ADDISON, TEXAS
ADDISON WEST INDUSTRIAL PARK
WATER - SANITARY SEWER
WATER UTILITIES DEPARTMENT

SCALE: 1"=100'

POWELL & POWELL, ENGINEERS
430 ONE LEMMON PARK NORTH
DALLAS, TEXAS
DWG. NO. S-641.3

FEBRUARY, 1979
DALLAS, TEXAS
2908-79-1-1.1