

STREET TYPE	STREET WIDTH (W)	A	B	ROW WIDTH	P
COLLECTOR	36'	8'	10'	60'	11.5'
COLLECTOR	40'	8' OR 10'	10' OR 12'	60'	9.5'
COLLECTOR	44'	11'	11'	65'	10.0'

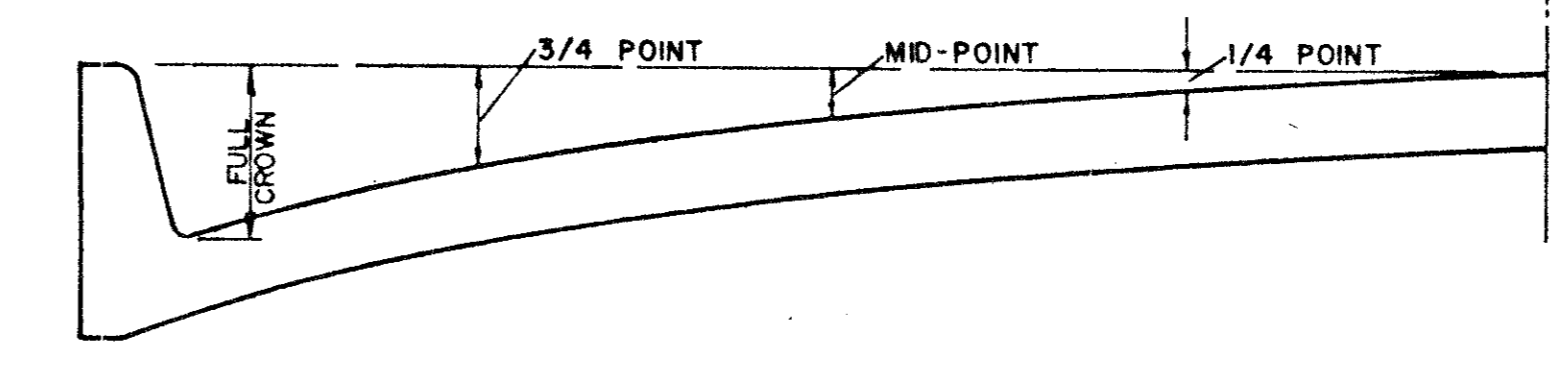
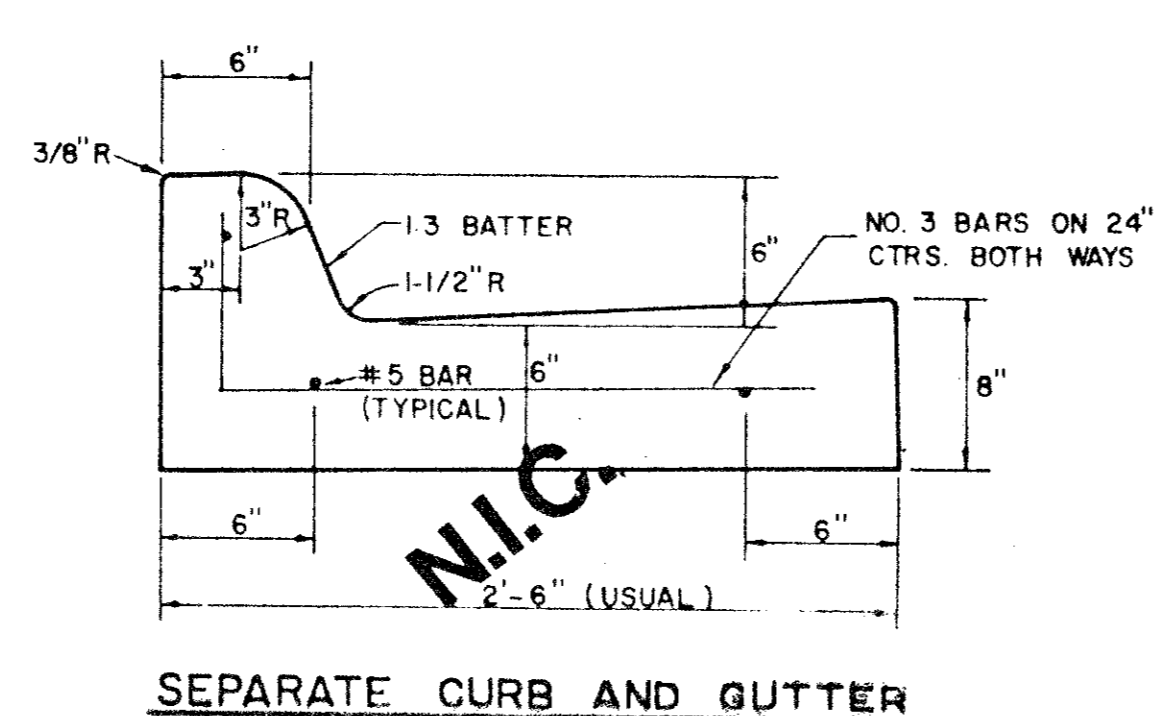
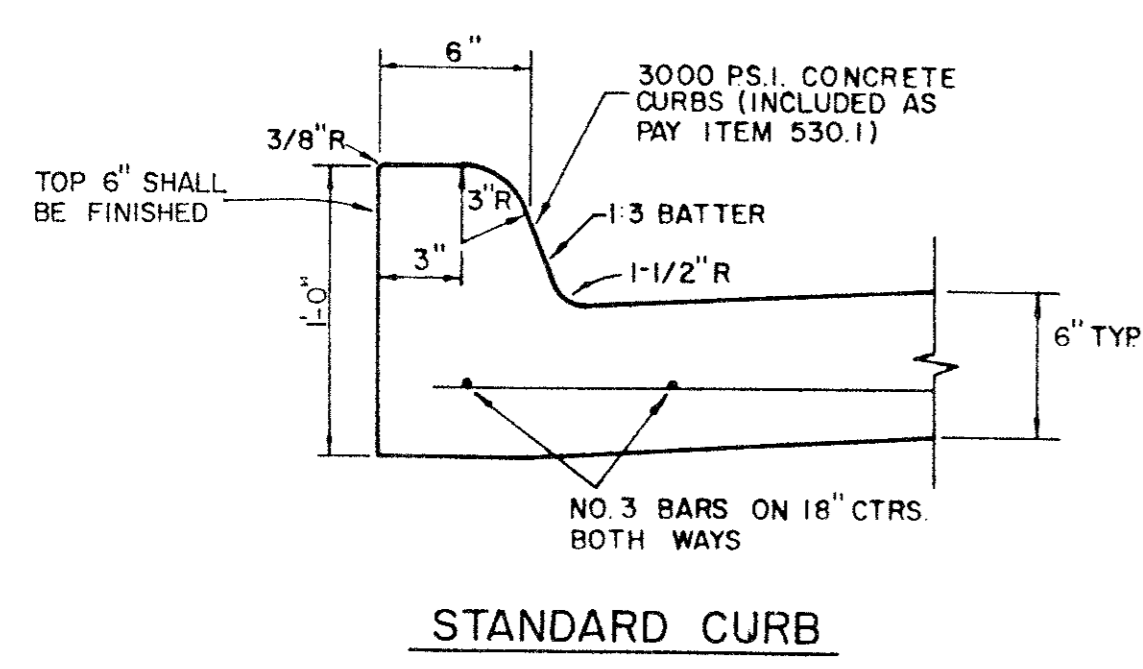
COLLECTOR STREET

LOCAL STREET

REINFORCED CONCRETE PAVEMENT

ALL REINFORCING BARS SHALL BE NO. 3 TRANSVERSE BARS TO BE SPACED ON 1'-6" CENTERS, LONGITUDINAL BARS TO BE SPACED ON 1'-6" EXCEPT WHERE NOTED.
 UNDIVIDED STREETS—PROVIDE 4" DBL-REF YELLOW & BUTTON P-117-Y PATTERNS TO BE ESTABLISHED BY ENGINEER-SEE DETAIL SHEET
 ① SAWED LONGITUDINAL DUMMY JOINT.
 ② CONSTRUCTION JOINT (FULL WIDTH PAVMT IS ALLOWED WHERE APPROVED BY ENGINEER.
 ③ FINISH SHALL BE TRANSVERSE WITH TRAFFIC LANES AND SHALL BE STEEL TINED BROOM FINISH.

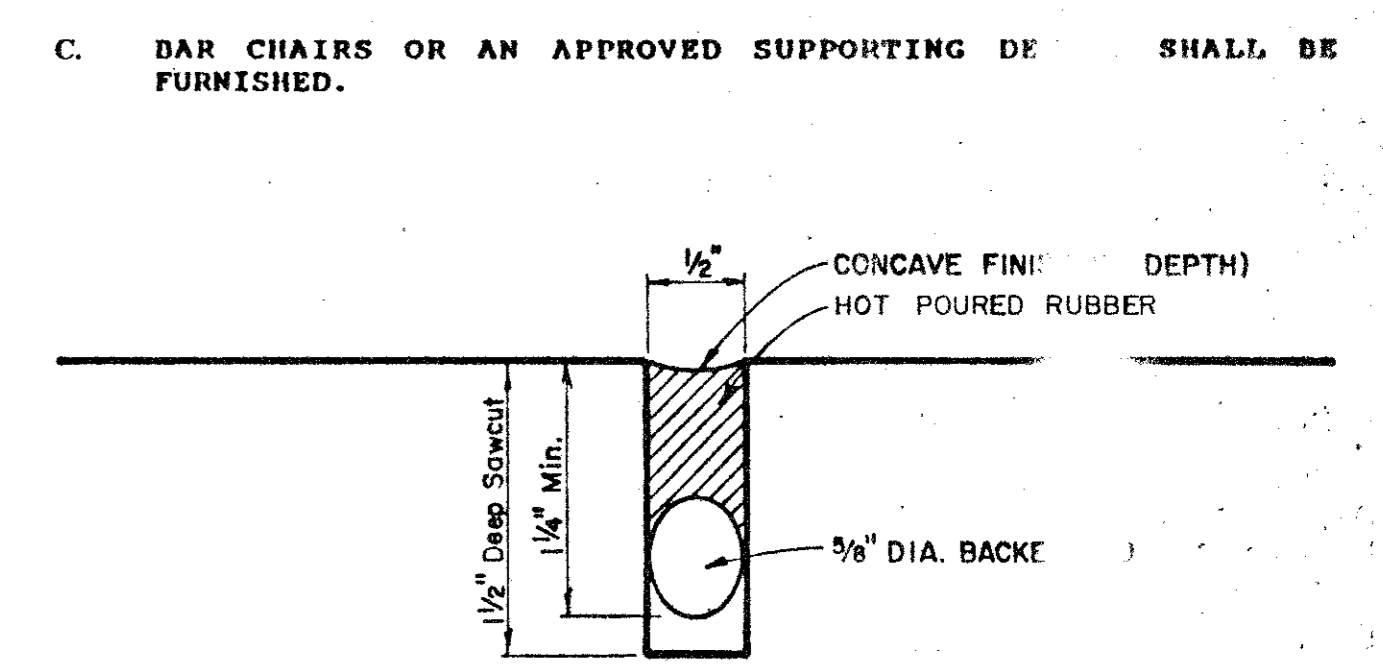
AS BUILTS
 I CERTIFY THIS PROJECT WAS CONSTRUCTED IN GENERAL CONFORMANCE WITH THESE CONSTRUCTION PLANS AND WILL FUNCTION AS DESIGNED.



ROADWAY WIDTH (W)	TOTAL CROWN HEIGHT	3/4 POINT	MID-POINT	1/4 POINT
26'	6"	3-3/8"	1-1/2"	3/8"
36'	6"	3-3/8"	1-1/2"	3/8"
44'	6"	3-3/8"	1-1/2"	3/8"
48'	6"	3-3/8"	1-1/2"	3/8"

TABLE OF CROWN HEIGHTS AND ORDINATES FOR VARIOUS PARABOLIC SECTIONS

- GENERAL NOTES**
- GENERAL PAVEMENT THICKNESS FOR STREETS SHOWN ON THIS SHEET IS IN SPECIAL NOTES.
 - STANDARD SPECIFICATIONS REINFORCED CONCRETE PAVEMENTS
 - ALL CURBS SHALL BE PLACED AT THE SAME TIME WITH THE PAVEMENT.
 - CURBS SHALL MEET THE SAME CONCRETE SPECIFICATIONS AS SPECIFIED FOR THE CONCRETE PAVEMENT.
 - DETAIL AND ARRANGEMENT OF JOINTS, ALL JOINTS SHALL BE AS SHOWN ON THE STANDARD CONSTRUCTION PLANS APPROVED BY ENGINEER.
 - BAR LAPS SHALL BE 30 DIAMETERS.



TYPICAL JOINT DETAIL

TOWN OF ADDISON, TEXAS
 DEPARTMENT OF ENGINEERING

STANDARD CONSTRUCTION DETAILS

STREET CROWNS & JOINTS

Designed - _____ Drawn - _____ Date - AUGUST, 1991 Job No. - 90025-4
 Approved - _____ Checked - _____ Scale - _____ Sheet D-1 OF _____

