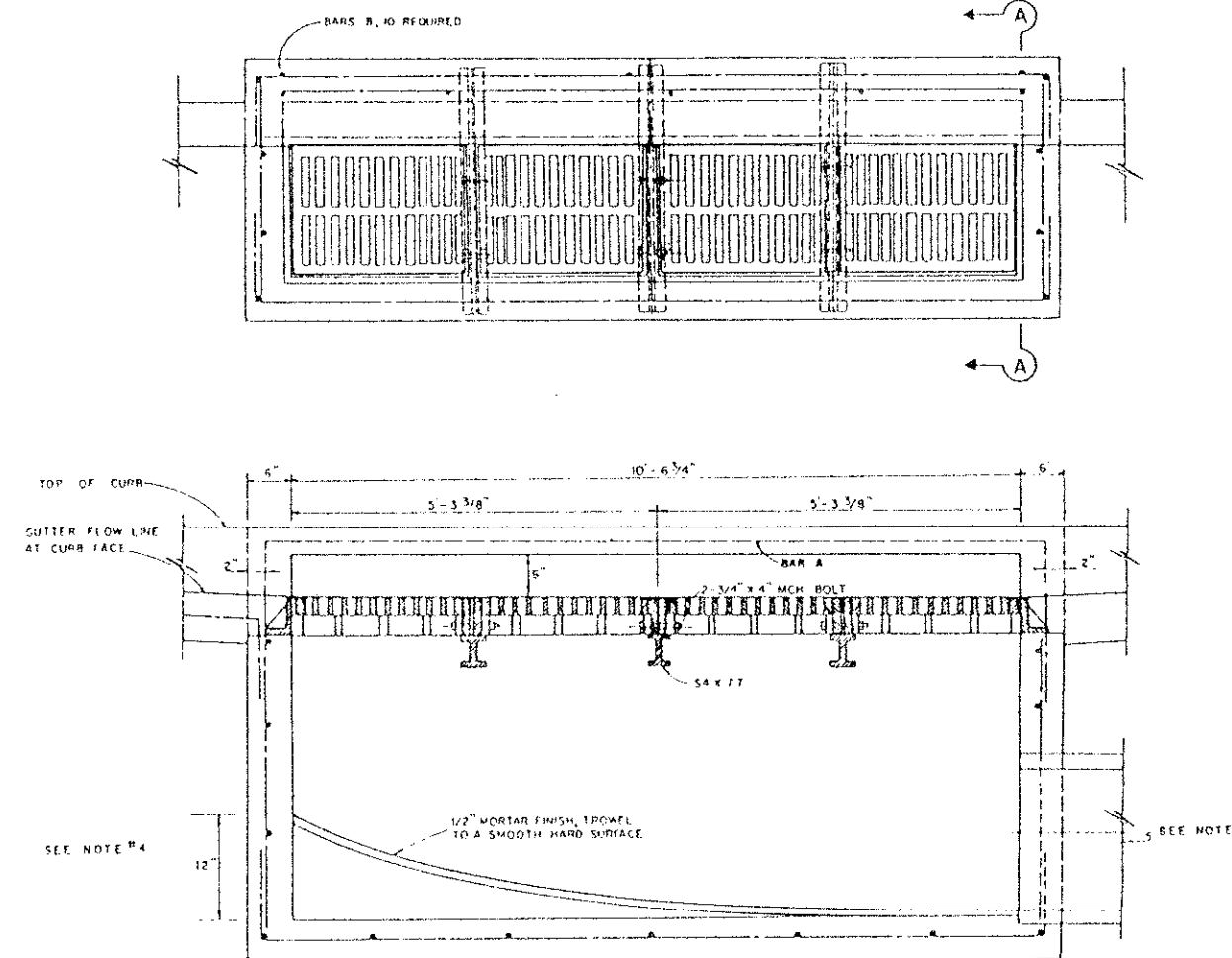
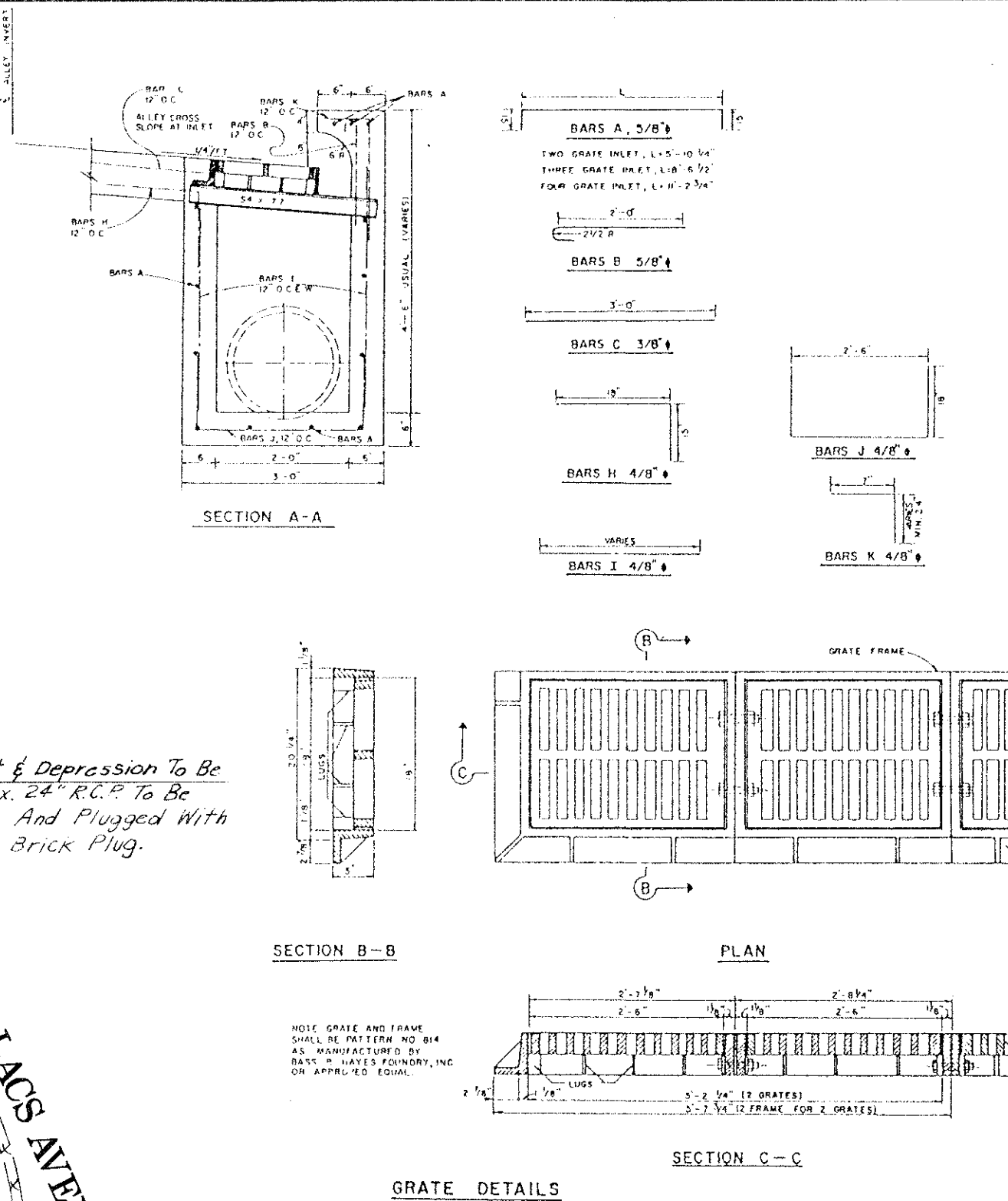
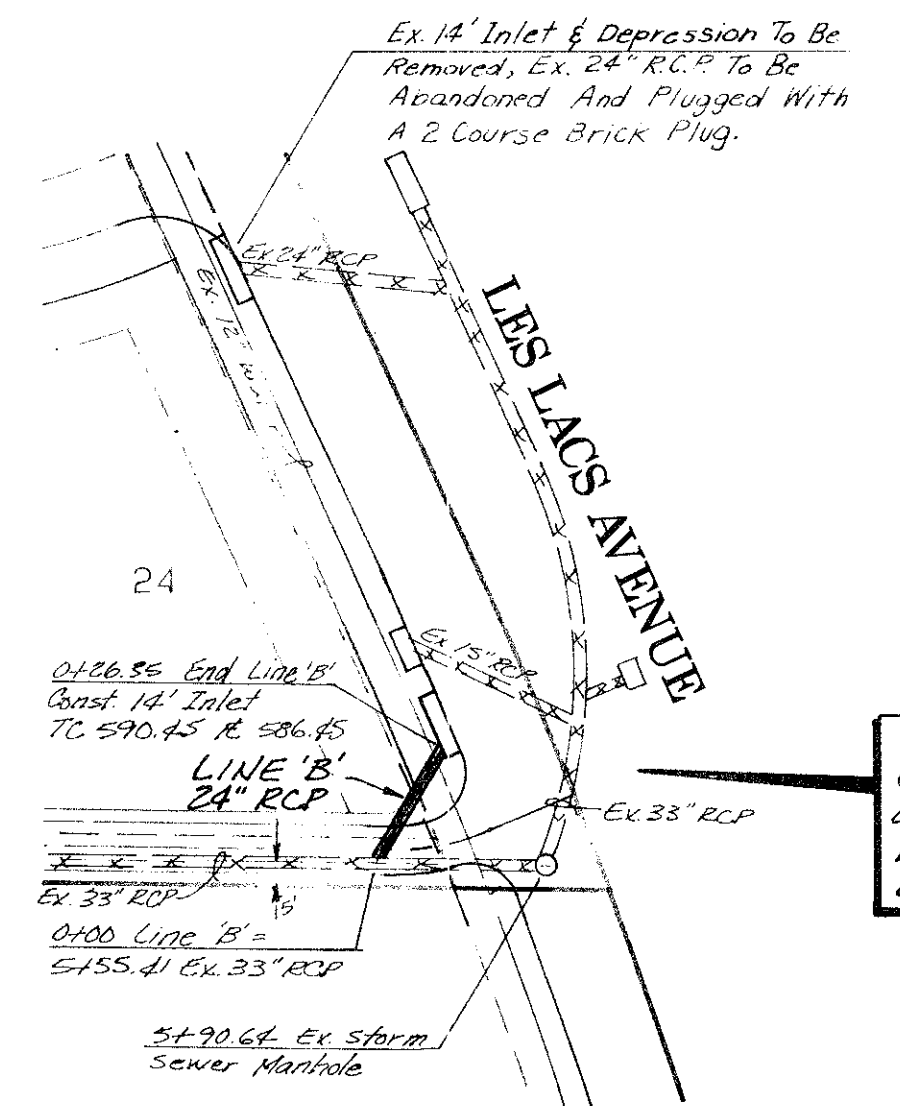
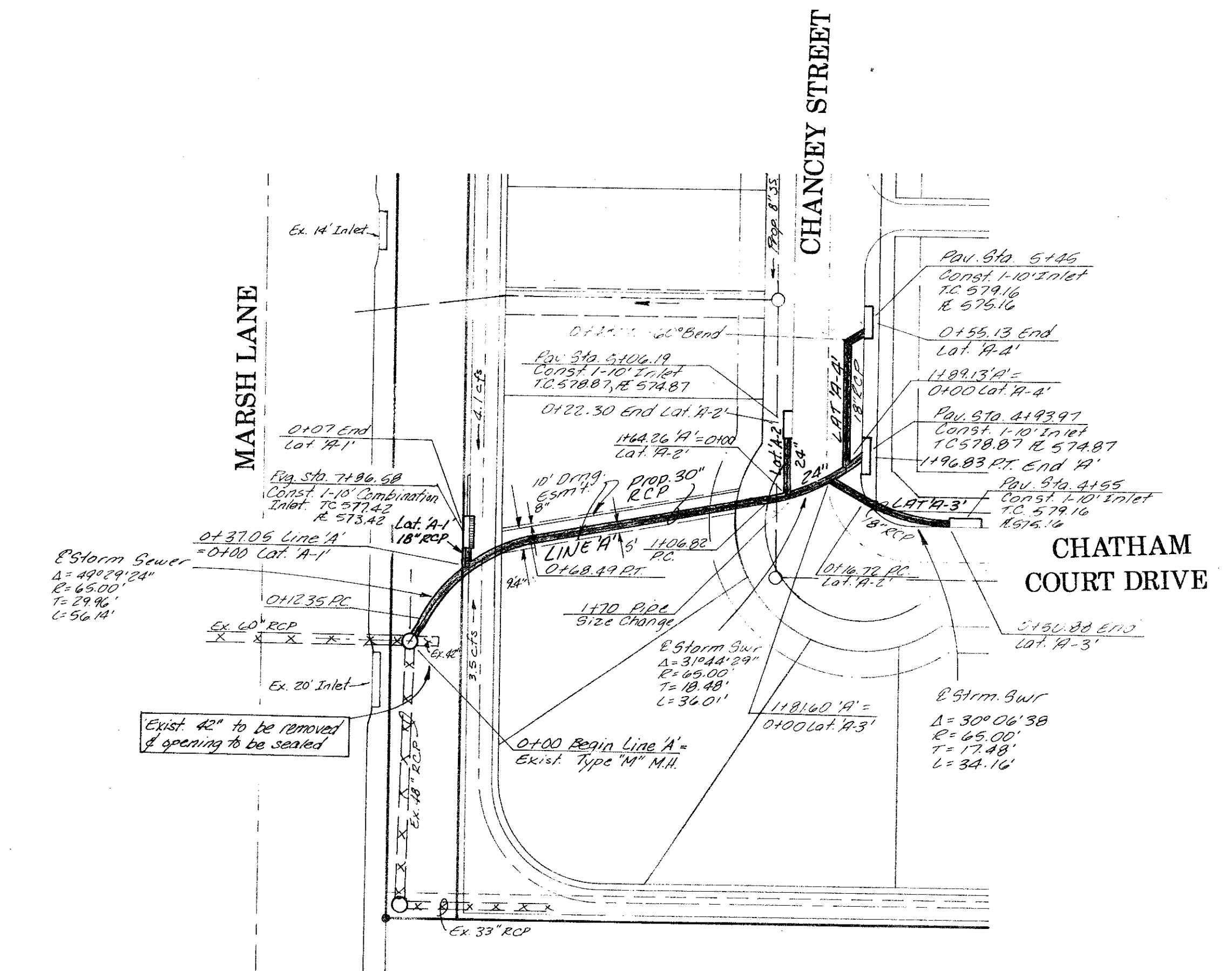
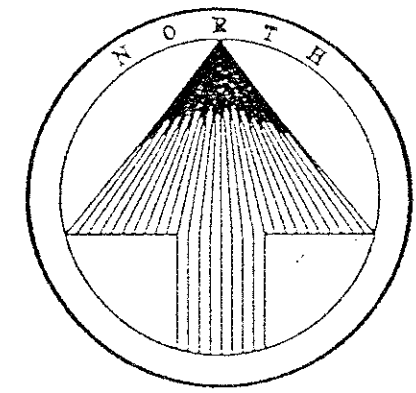


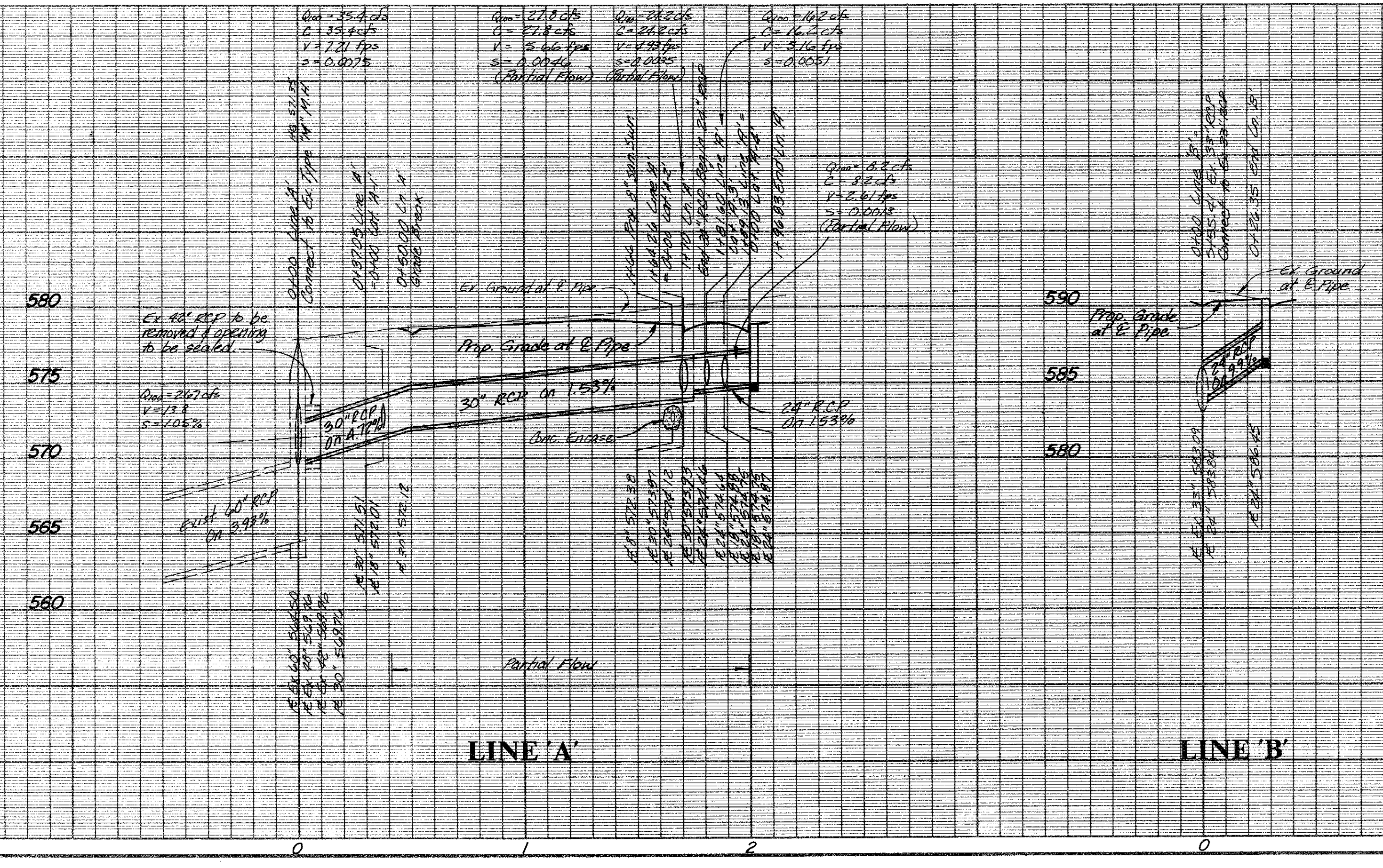
Revisions	Date	Description	Drawn By	Checked By



NOTES:
 1. COORDINATE POINTS TO BE SET BY ALL CONTRACTORS.
 2. ALL MANHOLES AND INLETS TO BE SET TO THE SAME ELEVATION UNLESS OTHERWISE NOTED OTHERWISE.
 3. THIS WORK IS TO BE DONE IN ACCORDANCE WITH THE LATEST EDITIONS OF THE TEXAS STANDARD SPECIFICATIONS FOR HIGHWAY CONSTRUCTION.
 4. THIS WORK IS TO BE DONE IN ACCORDANCE WITH THE LATEST EDITIONS OF THE TEXAS STANDARD SPECIFICATIONS FOR HIGHWAY CONSTRUCTION.

CAUTION!
 Contractor shall verify actual location of 12" water before installation of storm sewer.

BENCHMARKS:
 Square cut on N.W. corner of footing of T.U. Electric tower No. 12N-3W-T288 near Addison Fire Station No. 2. Elev. 605.20
 Square cut on top of curb of east median nose in the centerline of Beltway Drive at Les Lacs Avenue. Elev. 594.42
 Square cut on centerline of 14" inlet at the N.E. corner of the intersection of Beltway Drive and Marsh Lane. Elev. 585.20

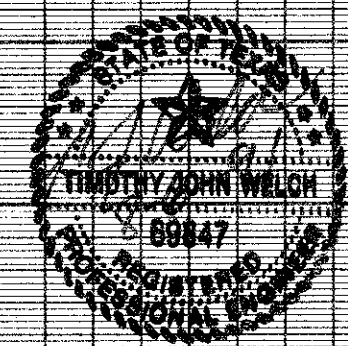


AS BUILT
 I CERTIFY THIS PROJECT WAS CONSTRUCTED IN GENERAL CONFORMANCE WITH THESE CONSTRUCTION PLANS AND WILL FUNCTION AS DESIGNED.

STORM SEWER PLAN & PROFILES
CHATHAM COURT
 TOWN OF ADDISON, TEXAS

THE NELSON CORPORATION
 LAND PLANNING • ENGINEERING • SURVEYING
 5999 SUMMERSIDE DRIVE • SUITE 202 • DALLAS, TEXAS 75252 • (214) 380-2605

DESIGN	DRAWN	DATE	SCALE	FILE	SHEET NO.
TNC	TNC	AUG, 1991	1"=40' H 1"=6' V	90025-4	DR-1



ARCHIVE SURFACES N02220