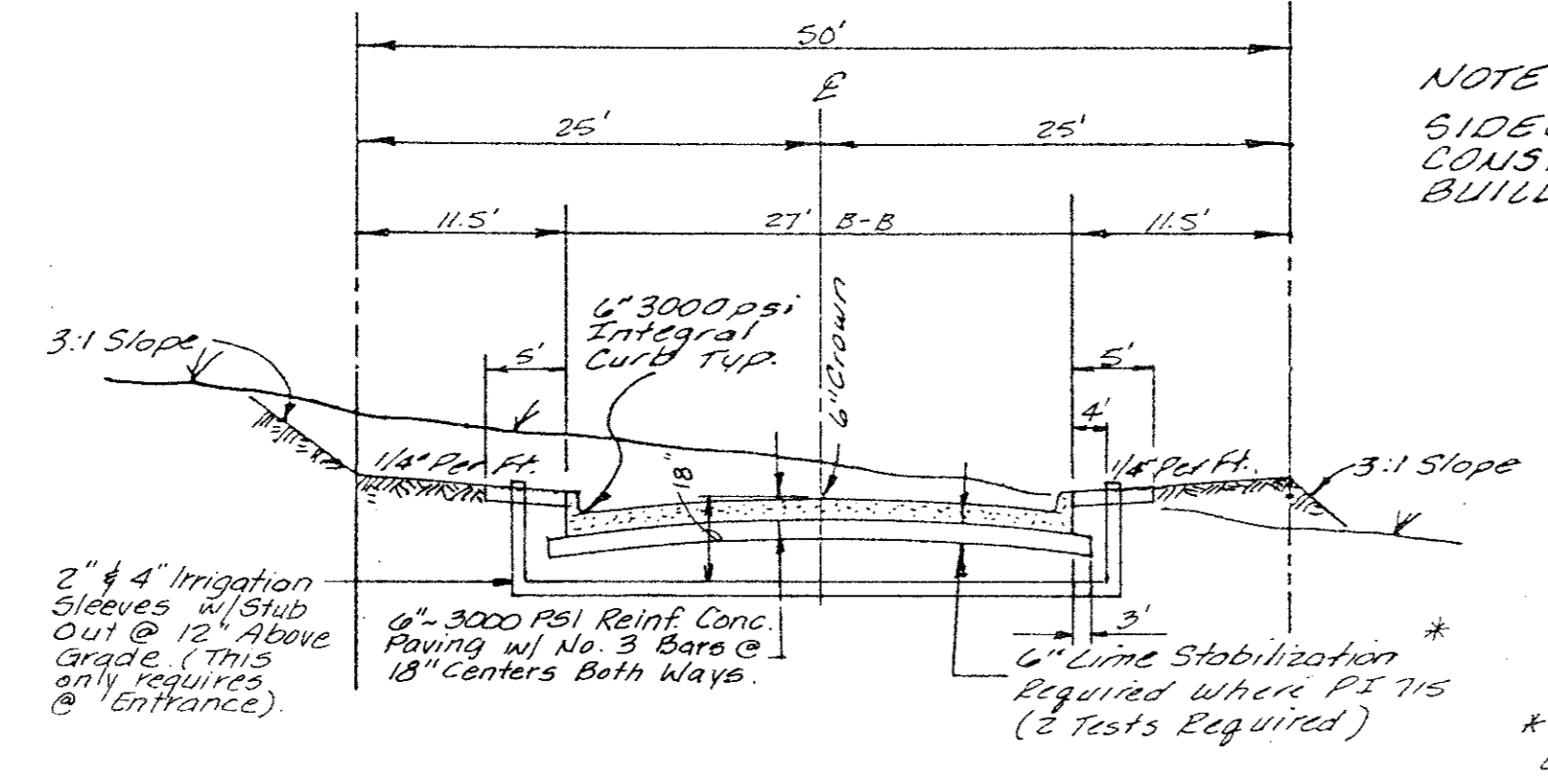
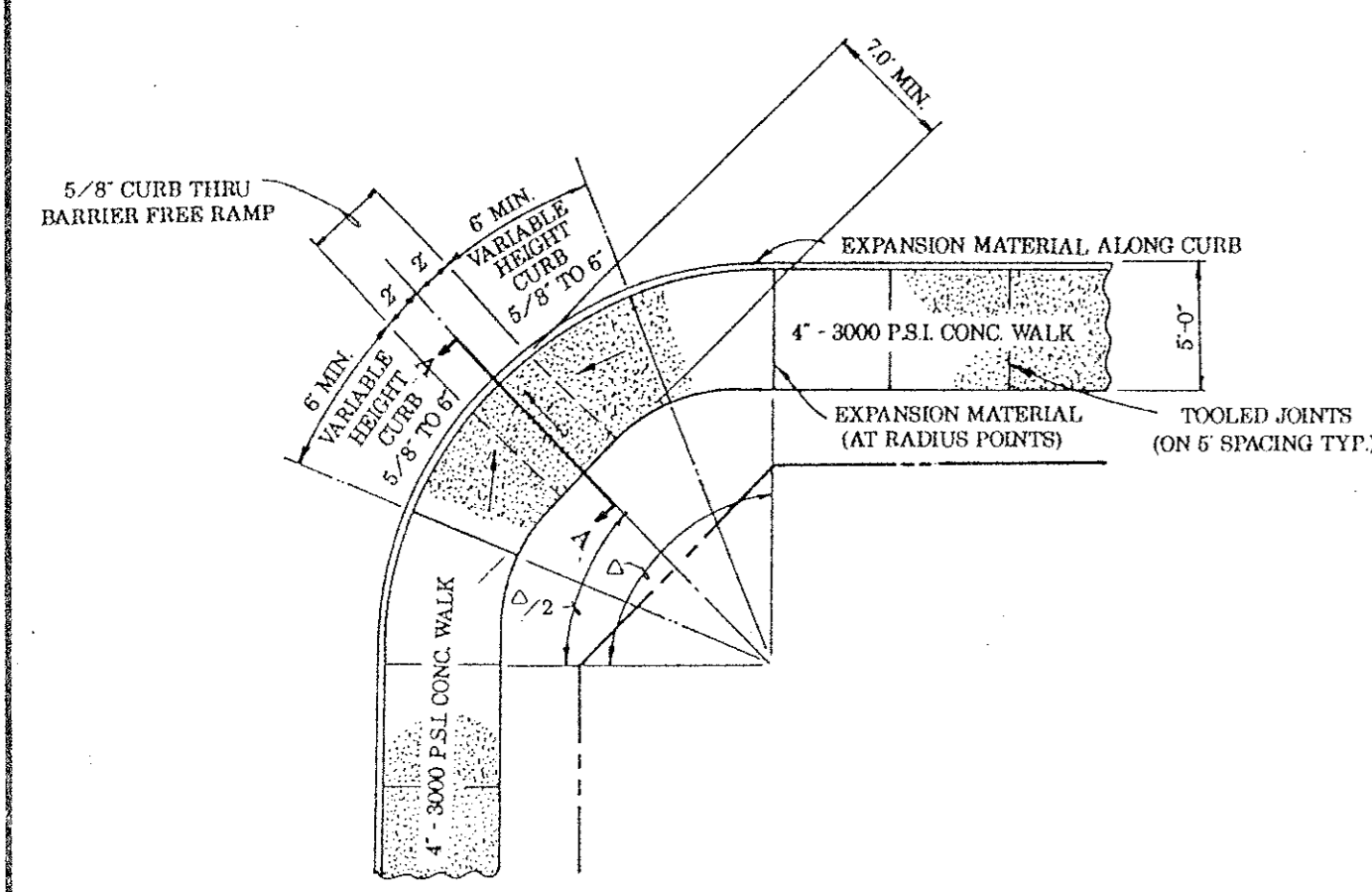
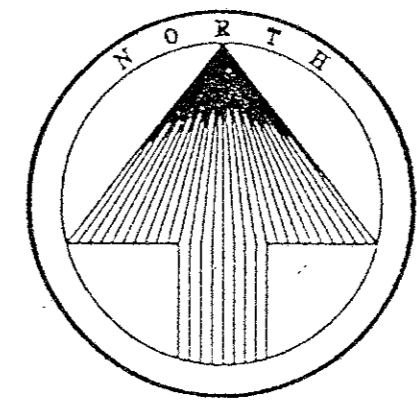
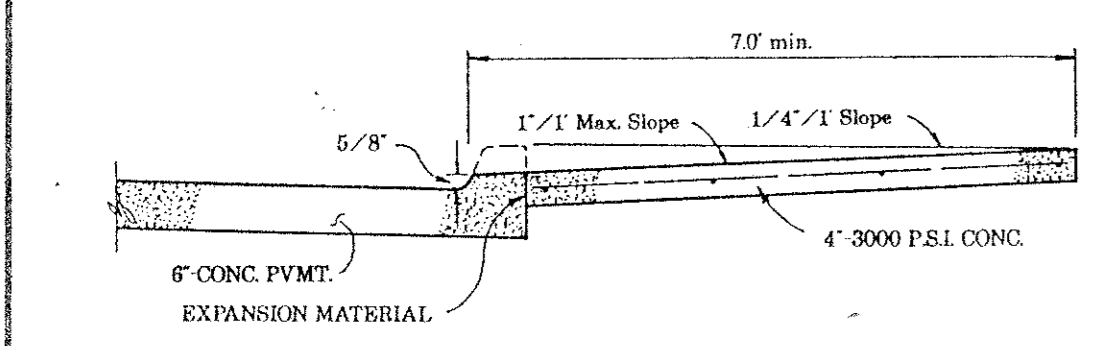


Revisions	Date	Description	Drawn By	Checked By

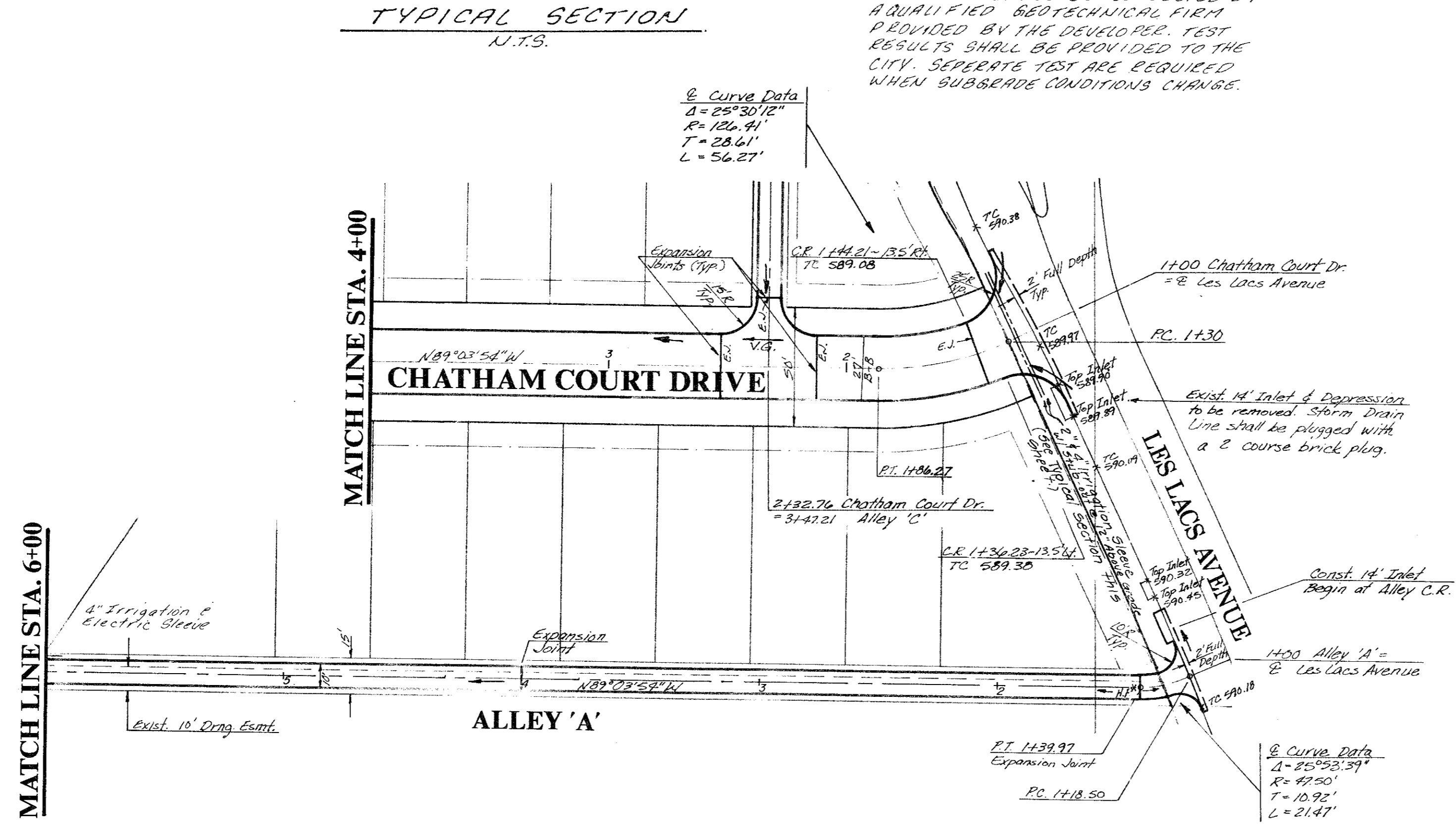


* OPTIMIZE LIME CONTENT BASED ON A LIME/PA CURVE WHICH SHOULD BE APPROX 12.43. TEST SHALL BE CONDUCTED BY A QUALIFIED GEOTECHNICAL FIRM PROVIDED BY THE DEVELOPER. TEST RESULTS SHALL BE PROVIDED TO THE CITY. SEPERATE TEST ARE REQUIRED WHEN SUBGRADE CONDITIONS CHANGE.



SECTION "A - A"

BARRIER FREE RAMP DETAIL
(WALK ABUTTING CURB)



PAVING GENERAL NOTES:

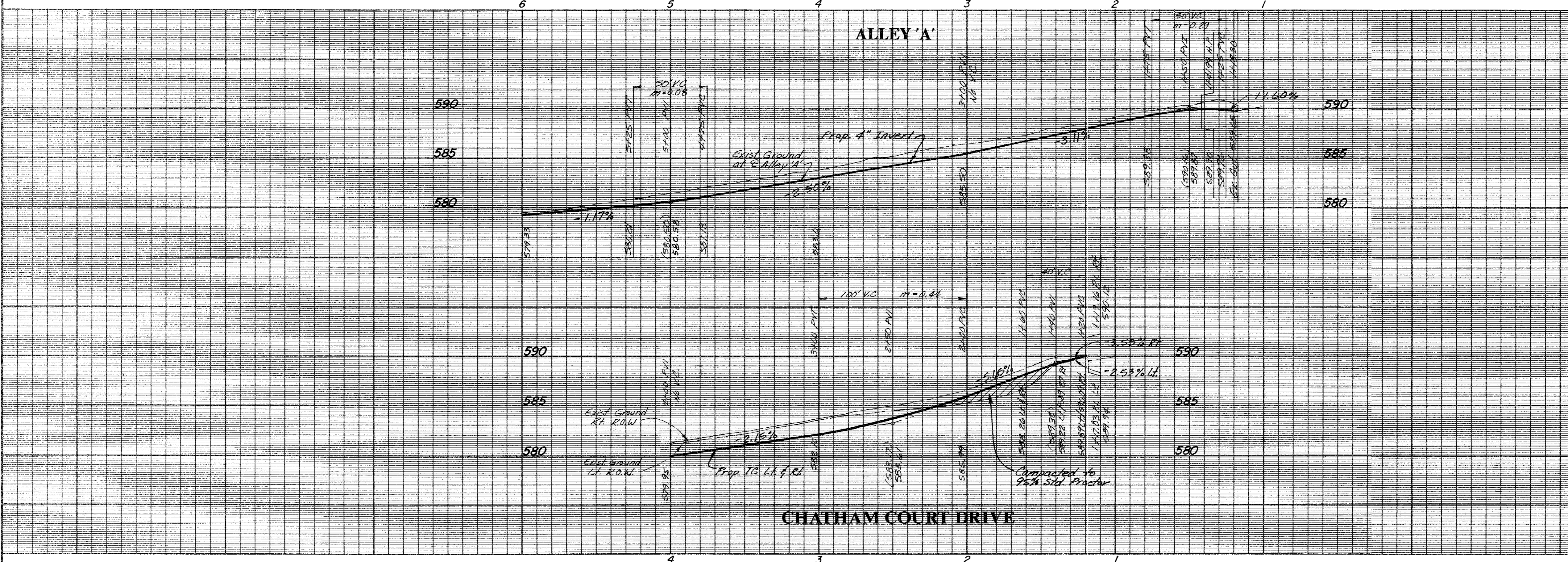
- Contraction Joints: Transverse contraction joints shall be sawed joints perpendicular to the centerline and surface of the pavement. Where sawed joints are used, contraction joints at 20-foot intervals shall be sawed as soon as sawing can be accomplished without damage to the pavement.
- Expansion Joints: Transverse expansion joints shall be formed perpendicular to the centerline and surface of the pavement and shall be constructed as shown on the plans.

PAVING GENERAL NOTES:

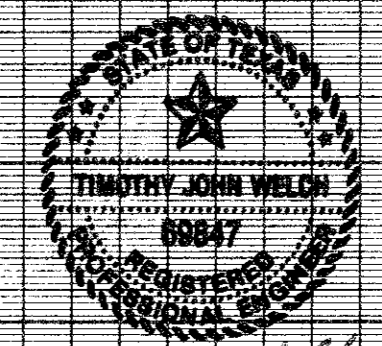
- Unless otherwise noted all material and construction shall conform to applicable specifications of the Town of Addison with amendments - The North Central Texas Council of Governments "Standard Specifications for Public Works Construction", Parts I and II, latest edition.
- All curb dimensions are to back of curb.
- Pavement reinforcing will be grade 60.
- All on-site concrete pavement will be 6" thick and have a minimum strength of 3000 PSI at 28 days.
- Construct a barrier-free curb and ramp at all intersections. See Sheet P-1 for details.
- The Contractor will be responsible for field verifying the location of all existing utilities prior to his operations.
- Hydrated lime will be applied as a slurry.
- No flyash is allowed.

BENCHMARKS:

- Square cut on N.W. corner of footing of T.U. Electric tower No. 12N-3W-T288 near Addison Fire Station No. 2. Elev. 605.20
- Square cut on top of curb of east median nose in the centerline of Beltway Drive at Les Lacs Avenue. Elev. 594.42
- Square cut on centerline of 14' inlet at the N.E. corner of the intersection of Beltway Drive and Marsh Lane. Elev. 585.20



AS BUILTS
I CERTIFY THIS PROJECT WAS CONSTRUCTED IN GENERAL CONFORMANCE WITH THESE CONSTRUCTION PLANS AND WILL FUNCTION AS DESIGNED.



PAVING PLAN & PROFILE
CHATHAM COURT
TOWN OF ADDISON, TEXAS

THE NELSON CORPORATION
LAND PLANNING • ENGINEERING • SURVEYING
5999 SUMMERSIDE DRIVE • SUITE 202 • DALLAS, TEXAS 75252 • (214) 380-2605

DESIGN	DRAWN	DATE	SCALE	FILE	SHEET NO.
TNC	TNC	AUG, 1991	1"=40'H 1"=6'V	90025-4	P-1