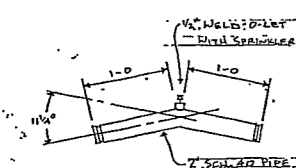
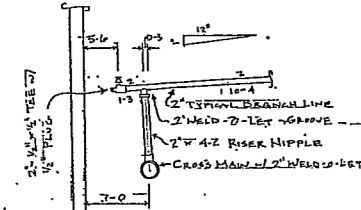


RISER DETAIL
SCALE: 3/8" = 1'-0"

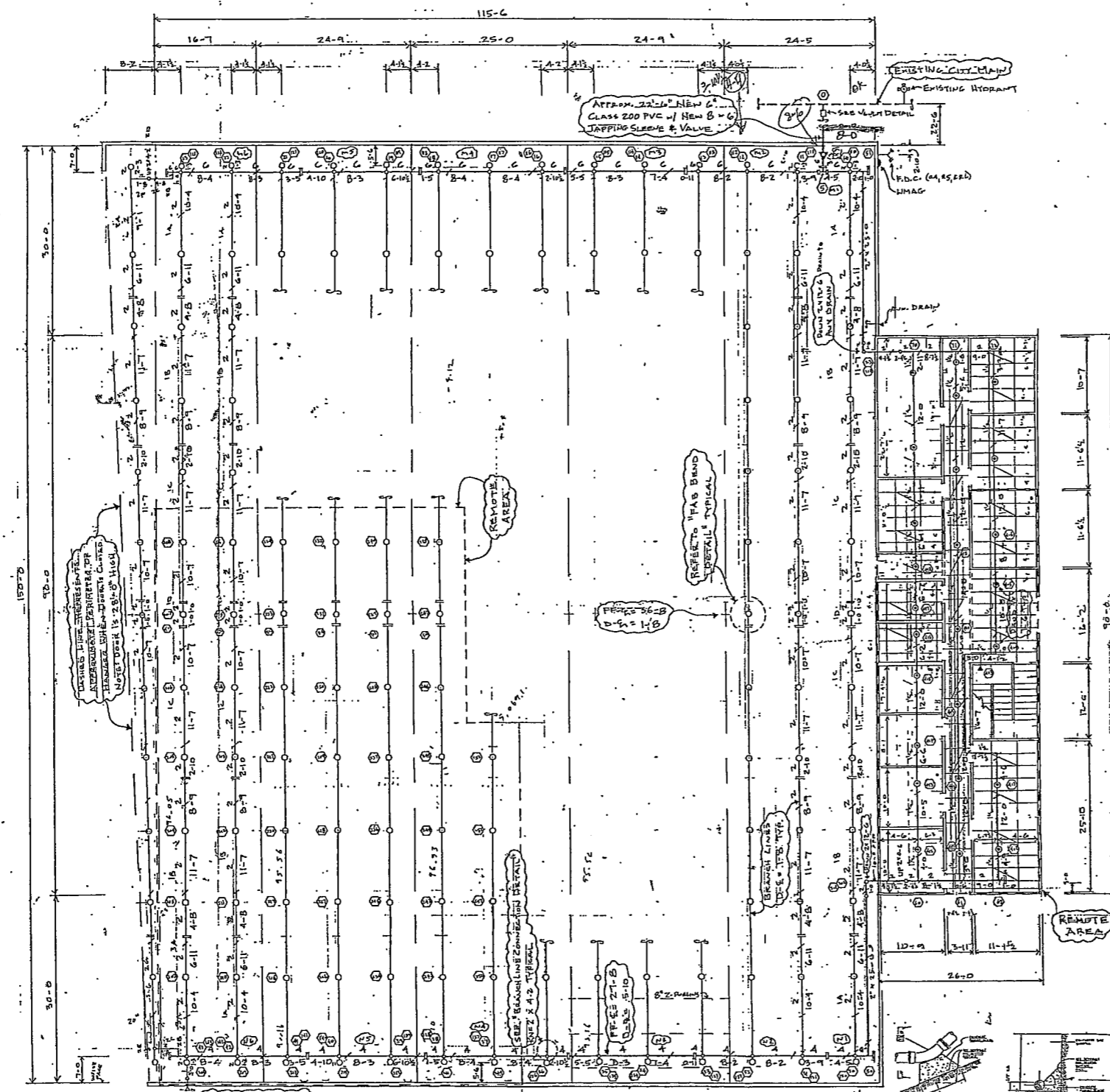
- RISER SCHEDULE**
- 1. 1/2" COUPLING
 - 2. 2-1/2" BUTTERFLY VALVE w/ TAMPER
 - 3. 2" STAR 530 ALARM CHECK VALVE w/ TRIM
 - 4. 2" POTTER PADDLE-TYPE FLOW SWITCH
 - 5. 2" VALVE TIT CHECK VALVE
 - 6. 2" DRAIN w/ 1/2" BUSHING TO 1/2" BALL DRIP
 - 7. OVER 2" x 1-1/2" JTG GALVANIZED (G.T.), T.A.
 - 8. 2-1/2" ROVER BRASS F.D.C.



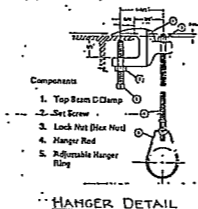
FAB BEND DETAIL
N.T.S.



BRANCHLINE CONNECTION DETAIL
N.T.S.

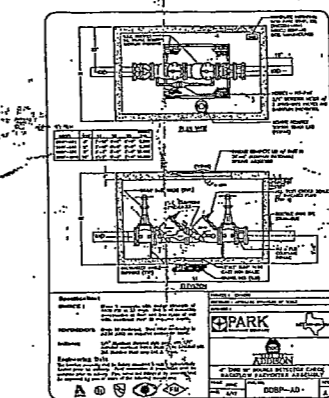


- 1. 1/2" STAR 530 BRASS UPRIGHT
- 2. 3/4" DRIFTS w/ 1/2" N.P.T. K=5, B
- 3. 1/2" STAR 530 SEMI-RECESSED CHROME PENDENT
- 4. 1/2" DRIFTS w/ 1/2" N.P.T. K=5, B
- 5. 1/2" STAR 530 CHROME SIDEWALL
- 6. 1/2" DRIFTS w/ 1/2" N.P.T. K=5, B

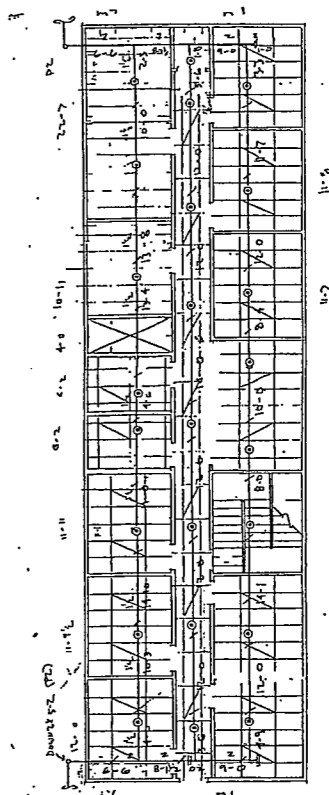


HANGER DETAIL
N.T.S.

- 1. UNDERGROUND MAINS**
- a. All piping from approximately 3 feet outside of building to be Polypropylene (PPC) Class 200, as manufactured by J.J. Manufacturing Company "Alpa-Brute", or CertainTeed "Vinyl Iron".
 - b. All piping 3 feet to inside of building to be Ductile Iron Class 51.
 - c. DR 14 PVC rating compatible with same inside diameter as ductile iron mechanical joint pipe and fittings.
 - d. Check to meet ASTM F437 standard for joining plastic pipe.
 - e. All fittings to be ductile iron and same nominal size and pressure rating as pipe.
 - f. Caps and plugs may be interchangeable.
 - g. All changes of direction in underground pipe to be anchored by concrete thrust blocks or pads as defined by NFPA 224.
 - h. Thrust blocks to be a minimum of 3000 psi concrete.
 - i. Underground mains to be thoroughly flushed in accordance with NFPA 213 & 214.
 - j. Minimum 3'-0" cover to finish grade for all underground piping.
 - k. Backfill for all buried pipes shall be natural on-site materials.
 - l. All pipe sizes & installation to conform to the requirements of the Fire Code.
 - m. Pipe shall be embedded in sand 6" beneath pipe, 6" between sides and 12" above pipe.
 - n. Thrust 42" Plastic Cover Cover Pipe shall be placed in Thrust 6" Fire Main.



VAULT DETAIL



SECOND FLOOR OFFICE PLAN
SCALE: 1/8" = 1'-0"

SYSTEM DESIGN CRITERIA

SYSTEM DESIGN IS BASED ON THE REQUIREMENTS OF NFPA 409 FOR GROUP II AIRCRAFT HANGAR HOUSING UNFUELED AIRCRAFT, & THE TOWN OF ADDISON. MAXIMUM DISTANCE BETWEEN HEADS IS 12'-0" (1305.5 MM) PER NFPA 409-4-2.3.

SYSTEM HAS BEEN HYDRAULICALLY CALCULATED TO PROVIDE A DENSITY OF 0.17 GPM OVER REMOTE 5,000 SF AREA PER NFPA 409-4-2.5 & NFPA 113. MINIMUM CUSHION OF 10 PSI IS REQUESTED BY THE TOWN OF ADDISON. ACTUAL CUSHION = 12.74 PSI (33.7%).

SYSTEM DEMAND @ CONNECTION TO CITY MAINS 1020 GPM @ 38.5 PSI

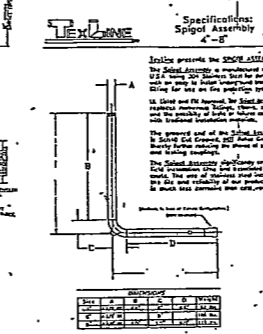
SYSTEM DEMAND @ BASE OF RISER 120.47 GPM @ 55.75 PSI

OFFICE AREA HAS BEEN HYDRAULICALLY CALCULATED TO PROVIDE A DENSITY OF 0.10 GPM OVER REMOTE 1500 SF PER NFPA 113 FOR LIGHT HAZARD.

WATERFLOW INFORMATION OBTAINED FROM THE CITY OF ADDISON BASED ON A 7-30-01 FLOW TEST:

STABILITY 55 PSI
RESISTANCE 46 PSI
PISTON 25" w/ 1/2" FLOWING
FLOW 2,280 GPM

- GENERAL NOTES**
- 1. ALL MATERIALS AND INSTALLATION TO CONFORM TO THE REQUIREMENTS OF NFPA 409 & NFPA 409.
 - 2. ALL GROOVED PIPE TO BE DRY-FLOW.
 - 3. ALL THREADED PIPE TO BE DRY-THREAD.
 - 4. ALL GROOVED FITTINGS AND COUPLERS TO BE VICTALIC OR EQUAL.
 - 5. ALL HANGERS & COMPONENTS TO COMPLY WITH NFPA 409.
 - 6. ALL PIPE AND HANGERS TO BE BLACK UNLESS NOTED GALVANIZED.



AUTOMATIC SPRINKLER OF TEXAS, INC.
P.O. BOX 582091
DUNCANVILLE, TEXAS 75138
(972) 298-2772

ADDISON EXPRESS HANGER ADDITION
ADDISON, TEXAS

SHEET NUMBER
FP-1
OF 1 SHEETS