

HANGAR SPACE - FIRST FLOOR  
 OFFICE SPACE - SECOND FLOOR  
 TOTAL

13,200 SF.  
 2,200 S.F.  
 15,400 S.F.

PARKING PROVIDED

6

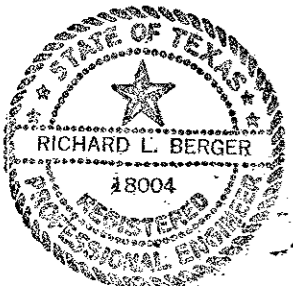
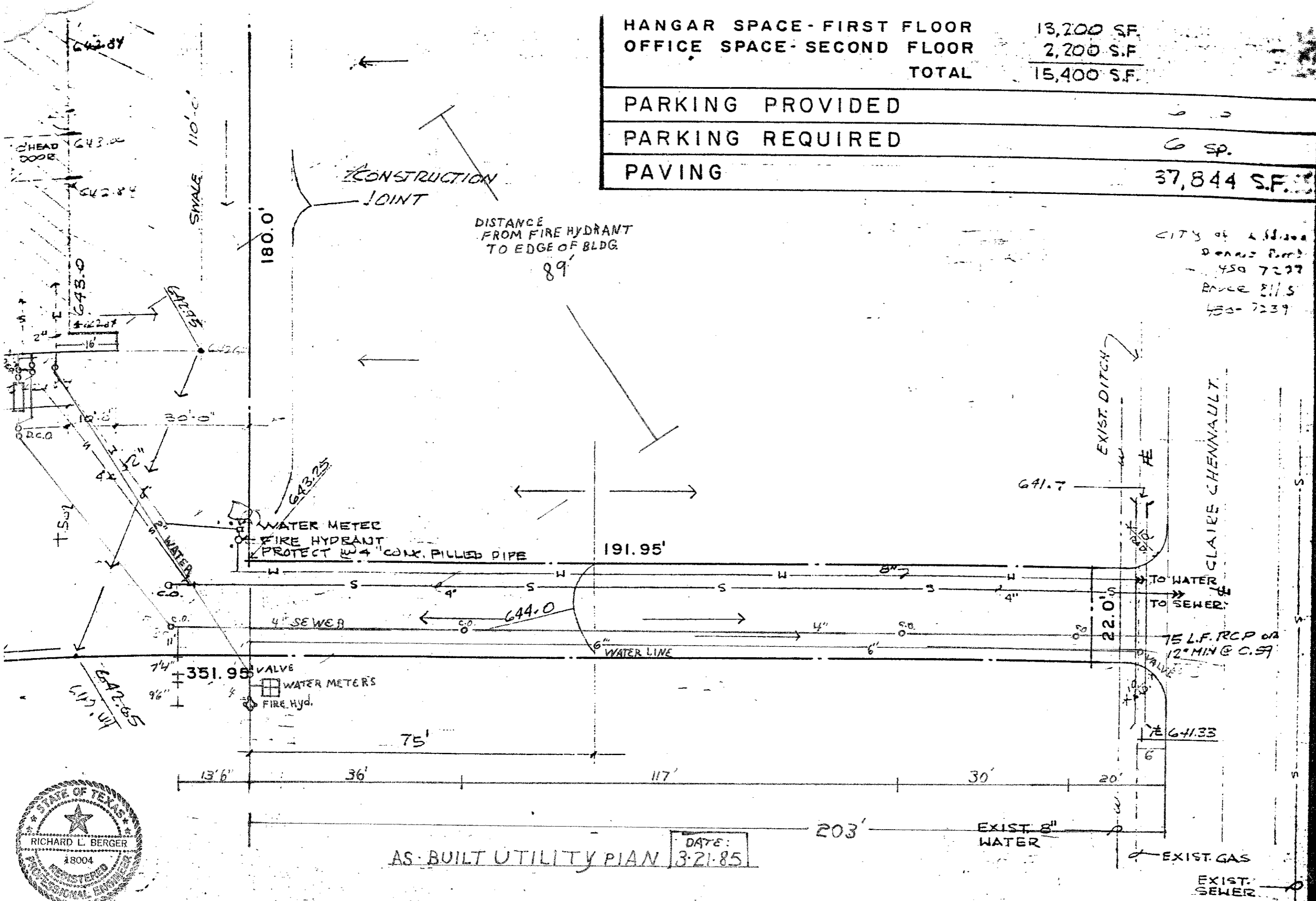
PARKING REQUIRED

6 Sp.

PAVING

37,844 S.F.

CITY of Houston  
 Dennis Ford  
 450 7237  
 Bruce Ellis  
 450-7239



AS-BUILT UTILITY PLAN DATE: 3-21-85

4575 CLAIRE CHENNAULT

SCALE: 1"=20'

JAMES H. BERGER ARCHITECTS



JOB 84105

DATE: 2-13-84

SHEET

13-1

HANGAR SPACE - FIRST FLOOR  
 OFFICE SPACE - SECOND FLOOR  
 TOTAL

13,200 SF.  
 2,200 S.F.  
 15,400 S.F.

PARKING PROVIDED

0

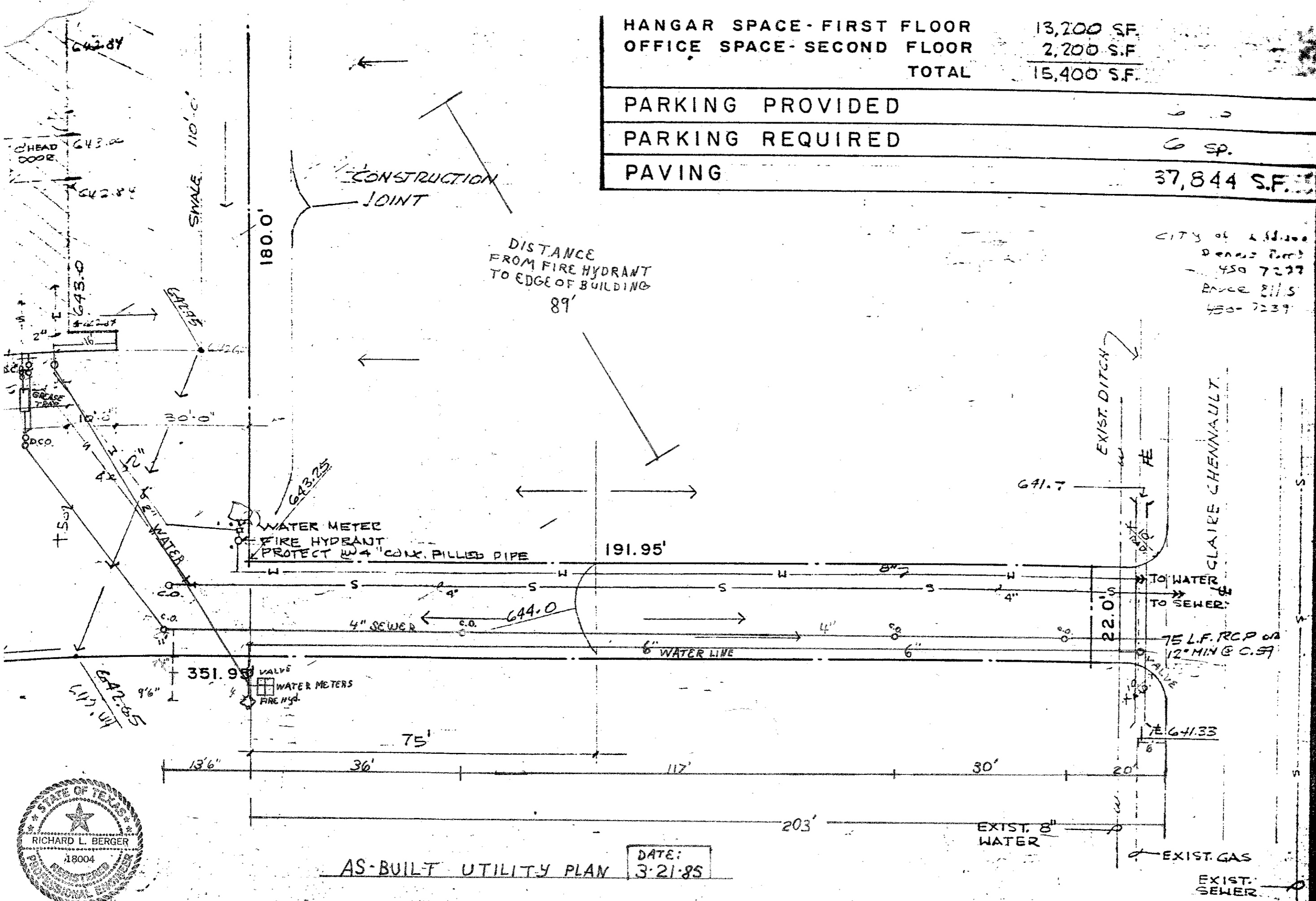
PARKING REQUIRED

6 Sp.

PAVING

37,844 S.F.

CITY of Dallas  
 Dennis Ford  
 450 7227  
 Bruce Ellis  
 450-7239



AS-BUILT UTILITY PLAN

DATE: 3-21-85

4575 CLAIRE CHENNAULT

SCALE: 1"=20'

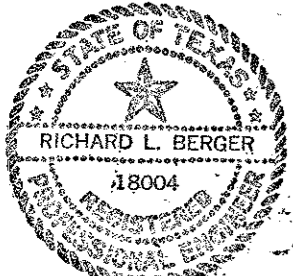
JAMES H. AR...

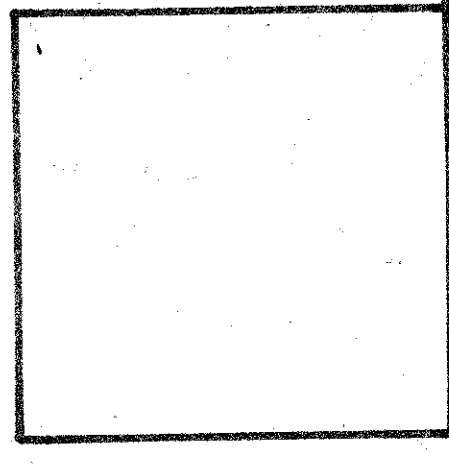
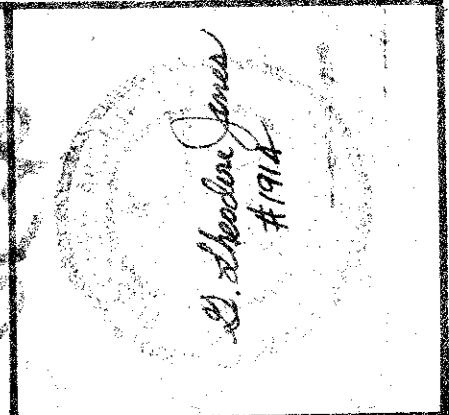


JOB 84105

DATE: 2-13-84

SHEET P-1



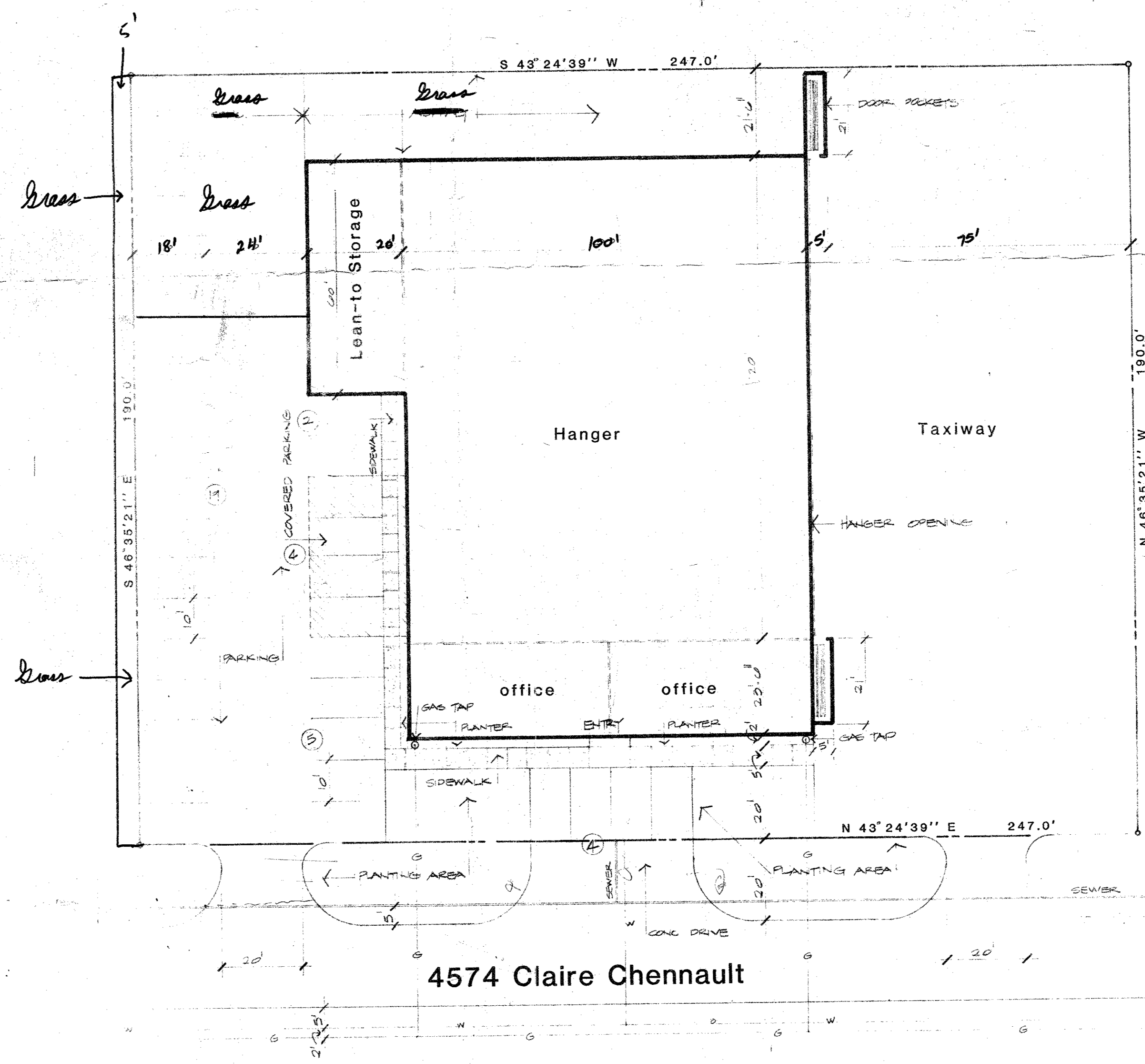
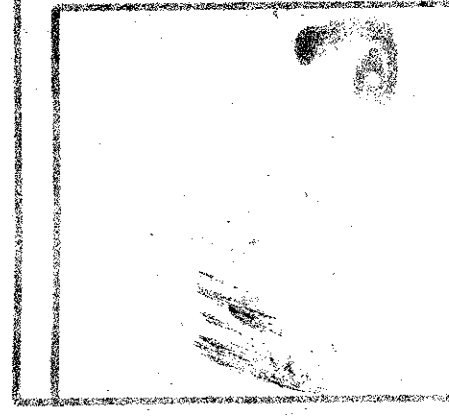


**tgma, inc.**  
 Architecture  
 Planning

2331 Gus Thomasson, Suite 123  
 Dallas, Texas 75228  
 Phone (214) 347-2440

**PHARRIS - MILLER, inc.**  
 ADDISON AIRPORT  
 Addison, Texas

JOB	100-82
DATE	MARCH 3, 1972
DRAWN	BC
CHECKED	BC



- 3" CONCRETE SLAB  
PARKING  
WALKS  
DRIVES
- 5" CONCRETE SLAB  
TAXIWAY  
HANGER  
GRADE EDGE

TABULATION  
 LAND AREA 46,121 SQ  
 1,017 AC  
 HANGER AREA 57,740  
 COVERAGE 65%

4574 Claire Chennault

SITE PLAN