

# ADDISON MUNICIPAL AIRPORT ADDISON, TEXAS

## SANITARY SEWER & WATER IMPROVEMENTS

JERRY REDDING, MAYOR

ALDERMAN

BILL SELLMAYER      TERRY ROBERTS

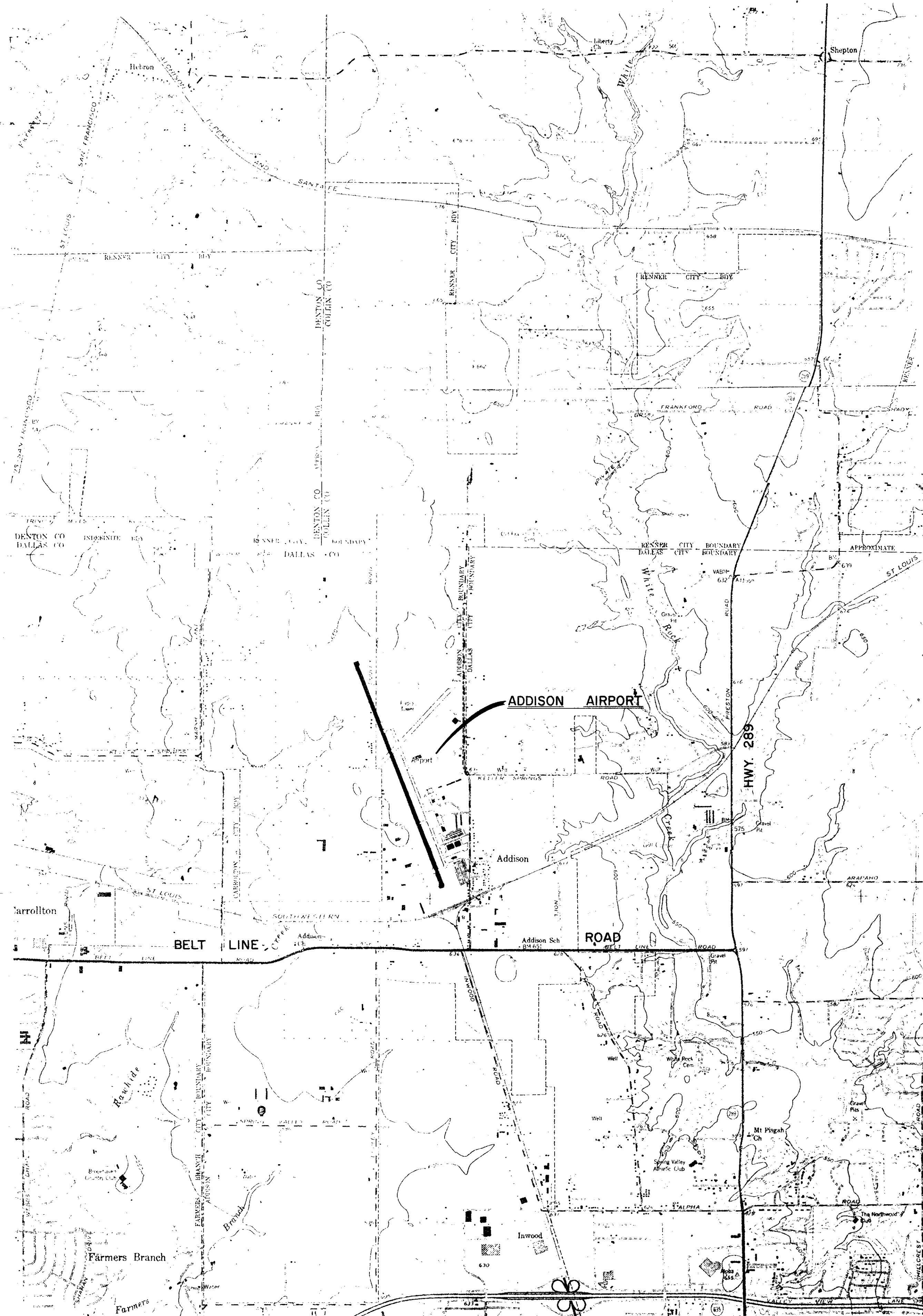
JOHN B. ALLEN      JACK DINGLER

RICHARD RODER

C. J. WEBSTER, CITY MANAGER

RALPH SEELY, DIRECTOR OF FINANCE

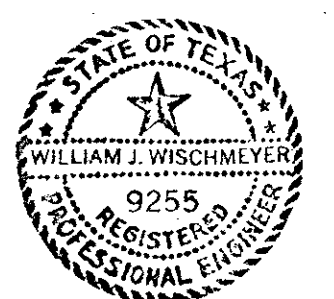
HENRY STUART, DIRECTOR OF AVIATION

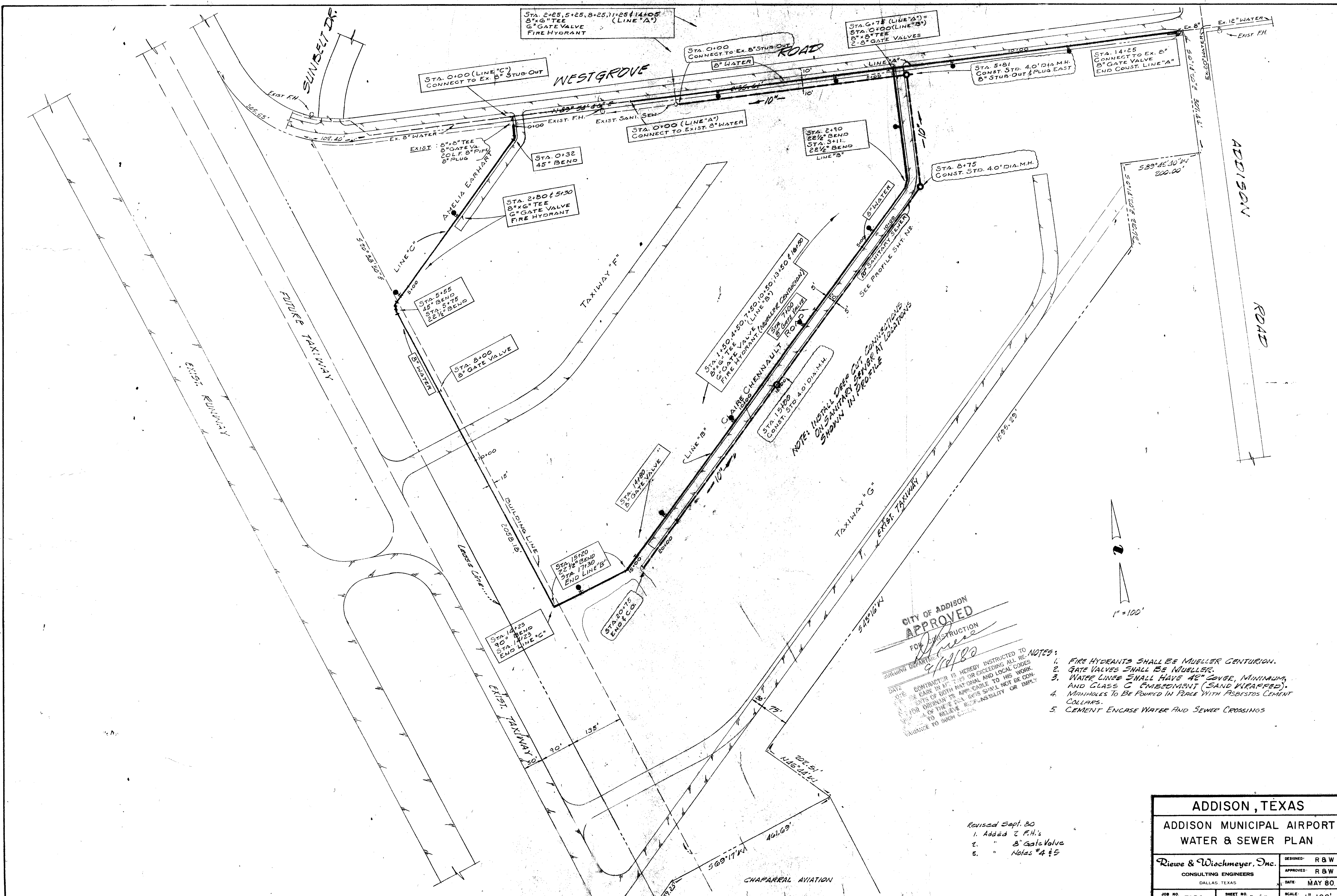


CITY OF ADDISON  
**APPROVED**  
 FOR CONSTRUCTION  
 BUILDING DEPARTMENT  
 DATE: \_\_\_\_\_  
 NOTE: CONTRACTOR IS HEREBY INSTRUCTED TO  
 EXERCISE CARE IN MEETING OR EXCEEDING ALL THE  
 REQUIREMENTS OF BOTH NATIONAL AND STATE CODES  
 AND FOR ORDINANCES APPLICABLE TO HIS WORK.  
 APPROVAL OF THESE SANITARY UNITS DOES NOT IMPLY  
 VARIANCE TO SUCH CODES.

NOTES

1. NO CONSTRUCTION TRAFFIC SHALL BE PERMITTED IN OPERATIONAL AREAS.
2. CONTRACTOR'S ACCESS ROUTES SHALL BE APPROVED BY THE ENGINEER PRIOR TO USE.
3. ALL REQUIRED BARRICADES AND INFORMATIONAL OR WARNING SIGNS SHALL BE PLACED IN A LOCATION AND MANNER APPROVED BY THE ENGINEER.
4. NO CONSTRUCTION EQUIPMENT SHALL BE PARKED IN ANY AREA EXCEPT THE PARKING AREA DESIGNATED BY THE ENGINEER.
5. ALL CONSTRUCTION EQUIPMENT AND VEHICLES SHALL BE PROVIDED WITH A FLAG PLACED SO AS TO BE READILY VISIBLE. THE FLAG SHALL BE NOT LESS THAN 3 FEET SQUARE CONSISTING OF A CHECKERED PATTERN OF INTERNATIONAL ORANGE AND WHITE SQUARES OR NOT LESS THAN 1 FOOT ON EACH SIDE.
6. IN THE EVENT OF AIRCRAFT EMERGENCY, THE CONTRACTOR SHALL PROMPTLY COMPLY WITH ANY INSTRUCTIONS ISSUED BY THE AIRPORT MANAGEMENT.
7. THE CONTRACTOR SHALL BE RESPONSIBLE FOR REPAIR OF ANY DAMAGE TO UNDERGROUND CABLES. NO DIGGING SHALL BE PERFORMED WITHOUT FIRST CONTACTING THE LOCAL FAA MAINTENANCE REPRESENTATIVE. ANY DAMAGE TO FAA CABLE OR UNDERGROUND FACILITIES SHALL BE REPAIRED IN ACCORDANCE WITH APPLICABLE FAA SPECIFICATIONS AND IN A MANNER ACCEPTABLE TO THE LOCAL FAA MAINTENANCE REPRESENTATIVE AND THE ENGINEER.





STA. 2+25, 5+25, 8+25, 11+25 & 14+05  
8"x6" TEE  
6" GATE VALVE  
FIRE HYDRANT (LINE "A")

STA. 6+75 (LINE "A")  
STA. 6+00 (LINE "B")  
8"x6" TEE  
2-8" GATE VALVES

STA. 0+00 (LINE "C")  
CONNECT TO EX. 8" STUB-OUT

STA. 0+00  
CONNECT TO EX. 8" STUB-OUT

STA. 5+81  
CONST. STD. 4.0' DIA. M.H.  
8" STUB-OUT & PLUG EAST

STA. 14+25  
CONNECT TO EX. 8"  
8" GATE VALVE  
END CONST. LINE "A"

STA. 0+00 (LINE "A")  
CONNECT TO EXIST. 8" WATER

STA. 2+90  
22 1/2" BEND  
STA. 3+11  
22 1/2" BEND  
LINE "B"

STA. 8+75  
CONST. STD. 4.0' DIA. M.H.

STA. 2+80 & 5+30  
8"x6" TEE  
6" GATE VALVE  
FIRE HYDRANT

STA. 5+55  
45" BEND  
STA. 5+75  
22 1/2" BEND

STA. 8+00  
8" GATE VALVE

STA. 1+50 & 4+50  
8"x6" TEE  
6" GATE VALVE  
FIRE HYDRANT (MULLER CENTURION)  
LINE "B"

STA. 7+00  
8" GATE VALVE  
ROAD

STA. 15+00  
CONST. STD. 4.0' DIA. M.H.

NOTE: INSTALL DEEP CUT CONNECTIONS  
ON SANITARY SEWER AT LOCATIONS  
SHOWN IN PROFILE

STA. 15+20  
22 1/2" BEND  
STA. 17+30  
END LINE "B"

STAROTS  
ENR & CO.

STA. 14+25  
90" BEND  
STA. 14+25  
END LINE "C"

CITY OF ADDISON  
APPROVED

FOR CONSTRUCTION  
9/17/80

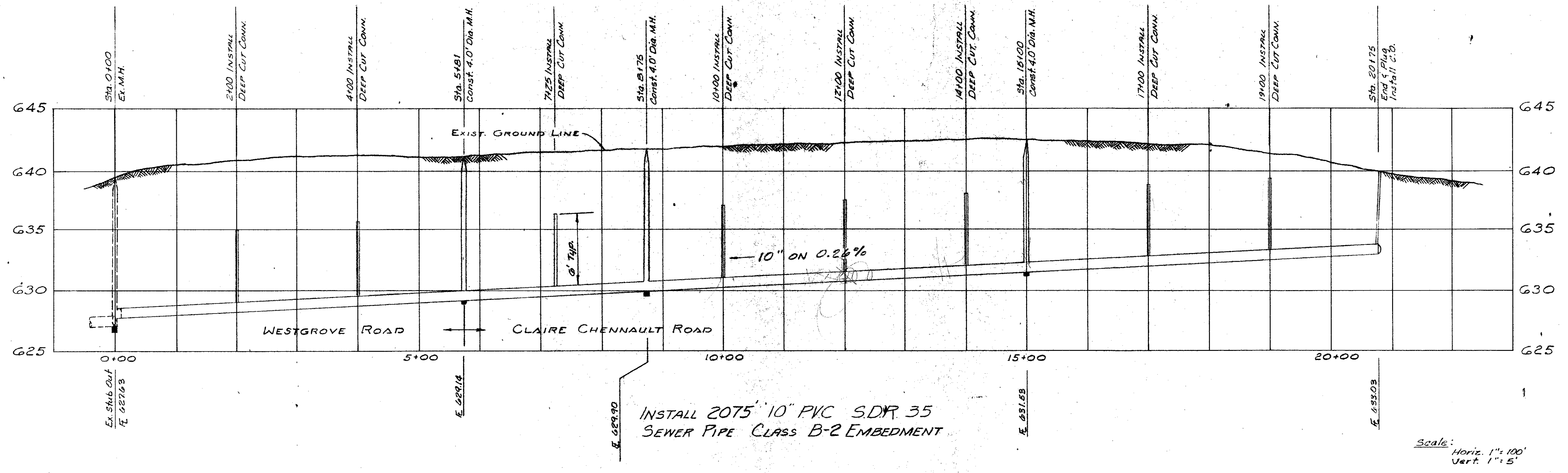
CONTRACTOR IS HEREBY INSTRUCTED TO  
BE CAREFUL IN HIS WORK AND TO OBEY ALL  
LAW ENFORCEMENT AGENCIES AND LOCAL CODES  
FOR ORDINARY IS APPLICABLE TO HIS WORK.  
ALL OF THESE SHALL NOT BE CON-  
SIDERED TO RELIEVE RESPONSIBILITY OR EMPLOY  
VARIANCE TO SUCH CODES.

- NOTES:
1. FIRE HYDRANTS SHALL BE MUELLER CENTURION.
  2. GATE VALVES SHALL BE MUELLER.
  3. WATER LINES SHALL HAVE 42" COVER, MINIMUM, AND CLASS C EMBEDEDMENT (SAND W/RAFFED).
  4. MANHOLES TO BE POURED IN PLACE WITH ASBESTOS CEMENT COLLARS.
  5. CEMENT ENCASE WATER AND SEWER CROSSINGS

Revised Sept. 80  
1. Added 2 F.H.'s  
2. " 8" Gate Valve  
5. " Notes #4 & 5

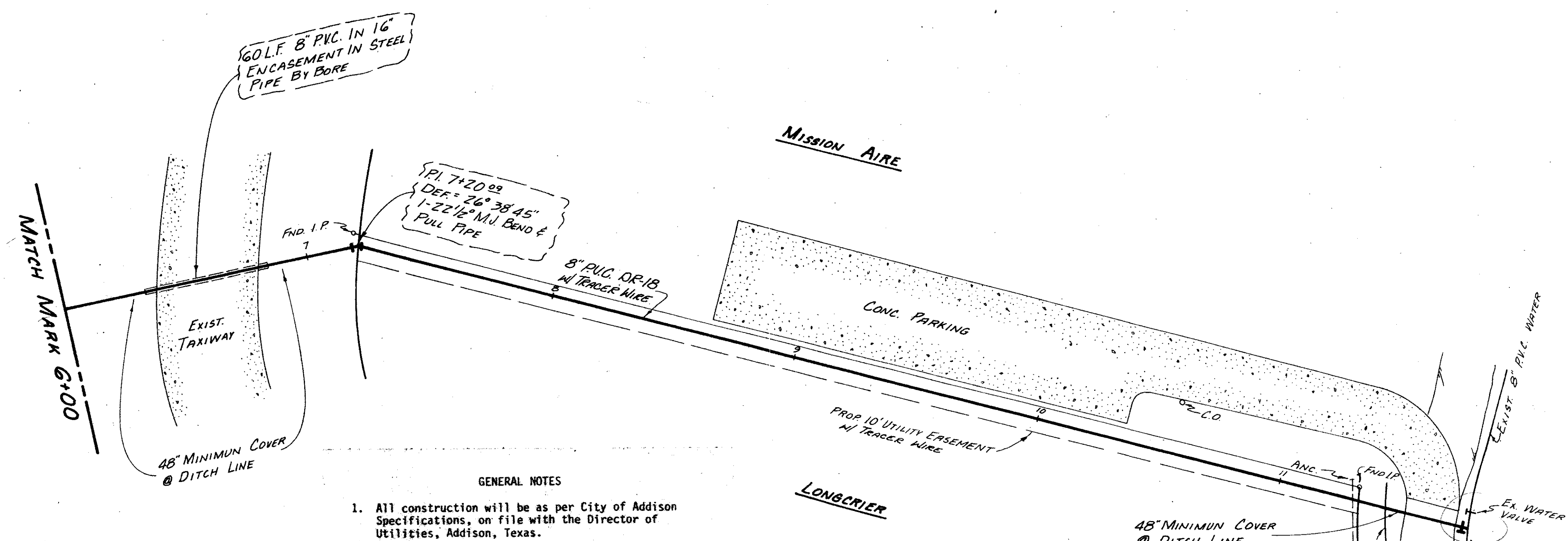
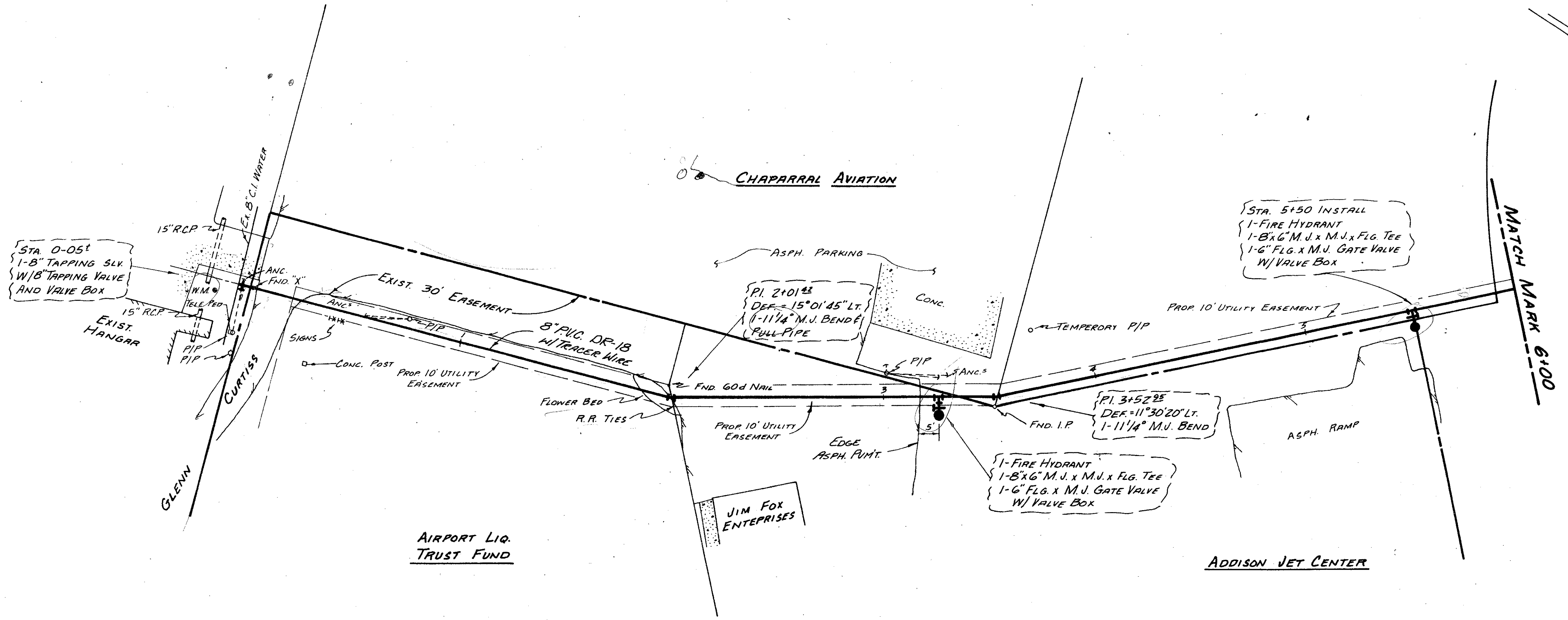
<b>ADDISON, TEXAS</b>	
<b>ADDISON MUNICIPAL AIRPORT WATER &amp; SEWER PLAN</b>	
Riewe & Wischmeyer, Inc. CONSULTING ENGINEERS DALLAS, TEXAS	DESIGNED: R & W APPROVED: R & W DATE: MAY 80
JOB NO. 7930	SHEET NO. 2013 SCALE: 1"=100'





CITY OF ADDISON  
APPROVED  
DATE: \_\_\_\_\_  
NOTE: CONTRACTOR IS HEREBY INSTRUCTED TO EXERCISE CARE IN MEETING OR EXCEEDING ALL REQUIREMENTS OF BOTH NATIONAL AND LOCAL CODES AND/OR ORDINANCES APPLICABLE TO HIS WORK. STRUED TO THESE DRAWINGS SHALL NOT BE CONSIDERED TO SUCH CODES.

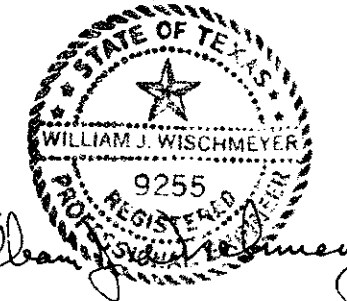
ADDISON, TEXAS	
ADDISON MUNICIPAL AIRPORT SEWER PROFILE	
Riewe & Wischmeyer, Inc. CONSULTING ENGINEERS DALLAS TEXAS	DESIGNED R & W DRAWN R & W DATE MAY 80
JOB NO. 7930	SHEET NO. 3 of 3



NOTE:  
 CONTRACTOR TO VERIFY EXACT  
 LOCATION OF ALL EXISTING UTILITIES  
 BEFORE CONSTRUCTION BEGINS.

- GENERAL NOTES
1. All construction will be as per City of Addison Specifications, on file with the Director of Utilities, Addison, Texas.
  2. Contractor is to provide 1 year maintenance bond for 10% of the completed construction amount.
  3. Encasement pipe shall have a minimum wall thickness of 3/8 inch, and conform to ASTM Spec. A.-34, Mild Steel or A-139, Grade A.
  4. Minimum cover shall be 48 inches.
  5. Fire hydrants w/valves will be furnished by City. Contractor is to provide all leads and connections necessary to place hydrants.
  6. All backfill shall be water jetted until water puddles appear on the surface and all settlement ceases.

AS-BUILT 5-5-82



<b>ADDISON MUNICIPAL AIRPORT</b>			
PROPOSED 8" WATERLINE FOR CHAPARRAL AVIATION			
Riewe & Wischmeyer, Inc. CONSULTING ENGINEERS DALLAS TEXAS		DESIGNED T.K. DRAWN S.M. DATE NOV. 1981	
JOB NO. 81-6100	SCALE 1" = 30'	SHEET NO. 1 OF 1	