

NOTE:

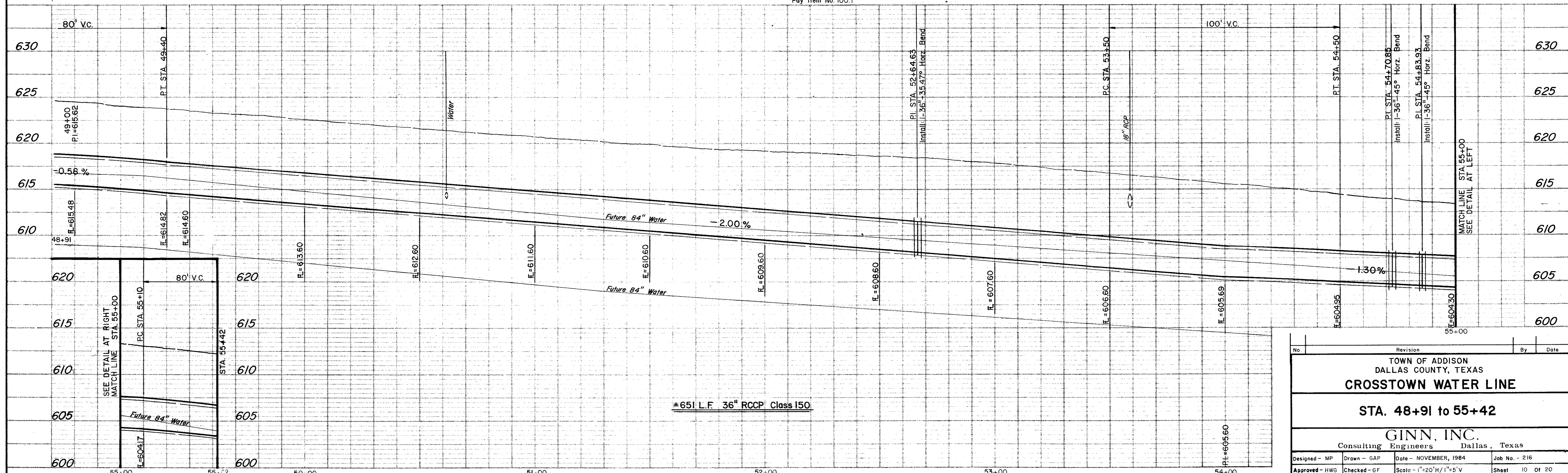
- Contractor Shall Determine The Exact Location And Depth Of The Underground Utilities Shown Prior To Construction By Contacting The Utility Companies. The Utility Elevations Shown Are Only Approximate.
- Contractor Shall Be Responsible For Any Utility Damages Resulting From Construction.
- Contractor Shall Repair Or Replace Any Damaged Utility Equal To Or Better Than The Original Condition At No Additional Compensation.

CONSTRUCTION NOTES:
(STA. 48+91 to 55+42 See Typ. Detail Sht.)

- Excavate As Required To Construct The Water Line With Appurtenances, As Shown With The Typical Detail Drawing.
- Replace With Fill Material To Match Existing Grades, As Shown With Typical Detail Drawing, Not A Separate Pay Item, Include in Pay Item No. 100.1

NOTE:
Block All Bends, Tees And Plugs As Required By Appurtenances. See Typical Detail Sheet.

B.M. "□" Plus Mark #19 At Sta. 55+28± On Celestial Rd. Elev. 614.37



No.	Revision	By	Date
TOWN OF ADDISON DALLAS COUNTY, TEXAS CROSTOWN WATER LINE			
STA. 48+91 to 55+42			
GINN, INC. Consulting Engineers Dallas, Texas			
Designed - MP	Drawn - GAP	Date - NOVEMBER, 1984	Job No. - 216
Approved - HWG	Checked - GF	Scale - 1"=20'H/1"=5'V	Sheet 10 of 20