

NOTE:

- Contractor Shall Determine The Exact Location And Depth Of The Underground Utilities Shown Prior To Construction By Contacting The Utility Companies. The Utility Elevations Shown Are Only Approximate.
- Contractor Shall Be Responsible For Any Utility Damages Resulting From Construction.
- Contractor Shall Repair Or Replace Any Damaged Utility Equal To Or Better Than The Original Condition At No Additional Compensation.

CONSTRUCTION NOTES:
(STA. 55+42 to 61+51 See Typ. Detail Sht.)

The following notes correspond by station number with the appropriate typical detail drawing.

- Excavate As Required To Construct The Water Line With Appurtenances, As Shown With The Typical Detail Drawing.
- Replace With Fill Material To Match Existing Grades, As Shown With Typical Detail Drawing, Not A Separate Pay Item Include In Pay Item No. 101.2

STATION EQUATION:

Water Line Sta. 60+37.63 =
Base Line Sta. 60+53.12

STA. 59+20 ±
Install:
1-8'x16" Conc. Box Vault
3-24" Butterfly Valves
1-24"x24" Tee

STA. 56+83
Install:
1-8'x12" Conc. Box Vault
1-36"x36" Tee
2-36" Butterfly Valves
1-36" Plug, 1-36"x24" Reducer
1-24" Butterfly Valve
See Detail Sheet 20
Pay Item No. 102.1, 104.2

STA. 58+70
SEE ADDENDUM NO. 2
Drawing Attached For
Limits Of Construction.

PI. STA. 59+45.42
Δ = 45°00'00"
Install:
1-24" 45° Horz. Bend
Complete In Place

STA. 59+35 ±
Install:
1-24"x12" Tee
1-12" Gate Valve w/ Box
Tie To Proposed 12" Water
w/ 12" Ductile Iron Pipe

PROPOSED 24" RCCP WATER
Pay Item No. 100.2

PROPOSED 24" RCCP WATER
Pay Item No. 100.2

CAUTION:
18" RCP
Do Not Disturb

PI. STA. 59+73.70
Δ = 46°24'00"
Install:
1-24" 46.40° Horz. Bend
Complete In Place
Welded Joints

PI. STA. 60+67.63
Δ = 17°30'00"
Install:
1-24" 17.5° Horz. Bend
Complete In Place
Welded Joints

Proposed 36" x 36"
Flanged Tee, By Others
Connect To Exist. 8"
AT THIS POINT.

STA. 60+48 to
STA. 60+75
1. Saw And Remove Exist. 5" Asphalt.
See Detail Sheet
2. Replace With 4" Thick Asphalt.
See Detail Sheet
Pay Item No. 101.2

Install:
1-36" 45° Horz. Bend

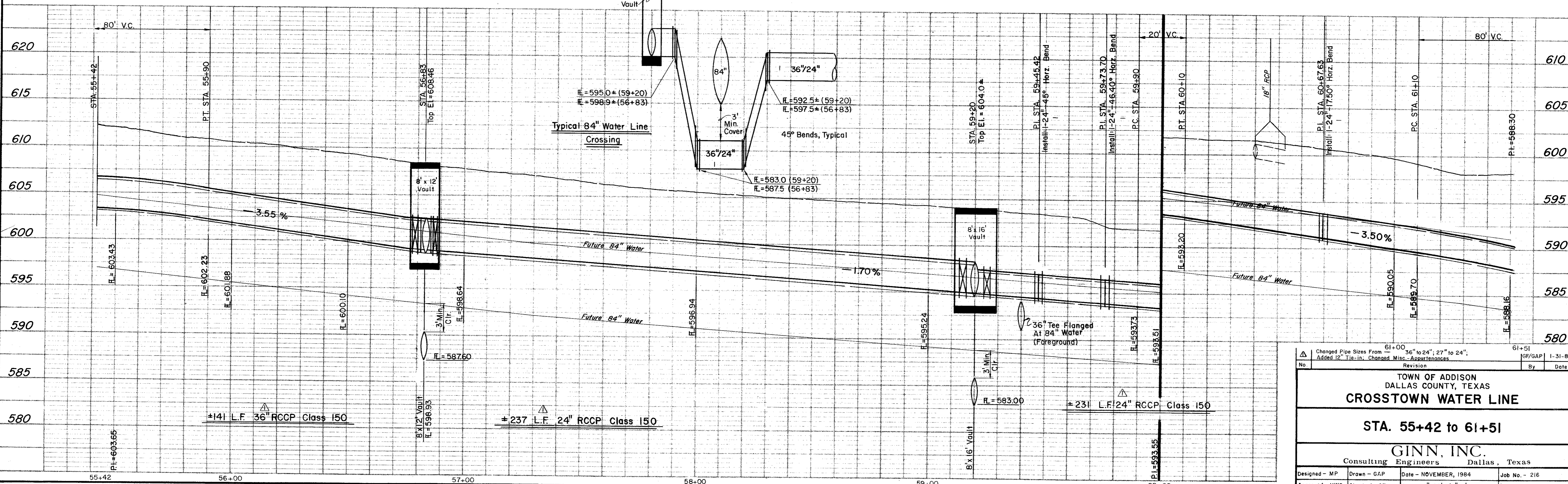
Install:
1-36" 45° Wye

Install:
1-36" Butterfly Valve
Complete In Place
Pay Item No. 102.1

NOTE:

Block All Bends, Tees And Plugs
As Required By Appurtenances.
See Typical Detail Sheet.

B.M. "□" Plus Mark #20 At Sta. 56+79 ±
On Celestial Rd. Elev. 607.32



Changed Pipe Sizes From 36" to 24", 27" to 24", Added 12" Tie-in, Changed Misc. Appurtenances		61+51
No.	Revision	By Date
TOWN OF ADDISON DALLAS COUNTY, TEXAS CROSTOWN WATER LINE		
STA. 55+42 to 61+51		
GINN, INC. Consulting Engineers Dallas, Texas		
Designed - MP	Drawn - GAP	Date - NOVEMBER, 1984
Approved - HWG	Checked - GF	Scale - 1"=20'H/1"=5'V
		Job No. - 216
		Sheet 11 OF 20