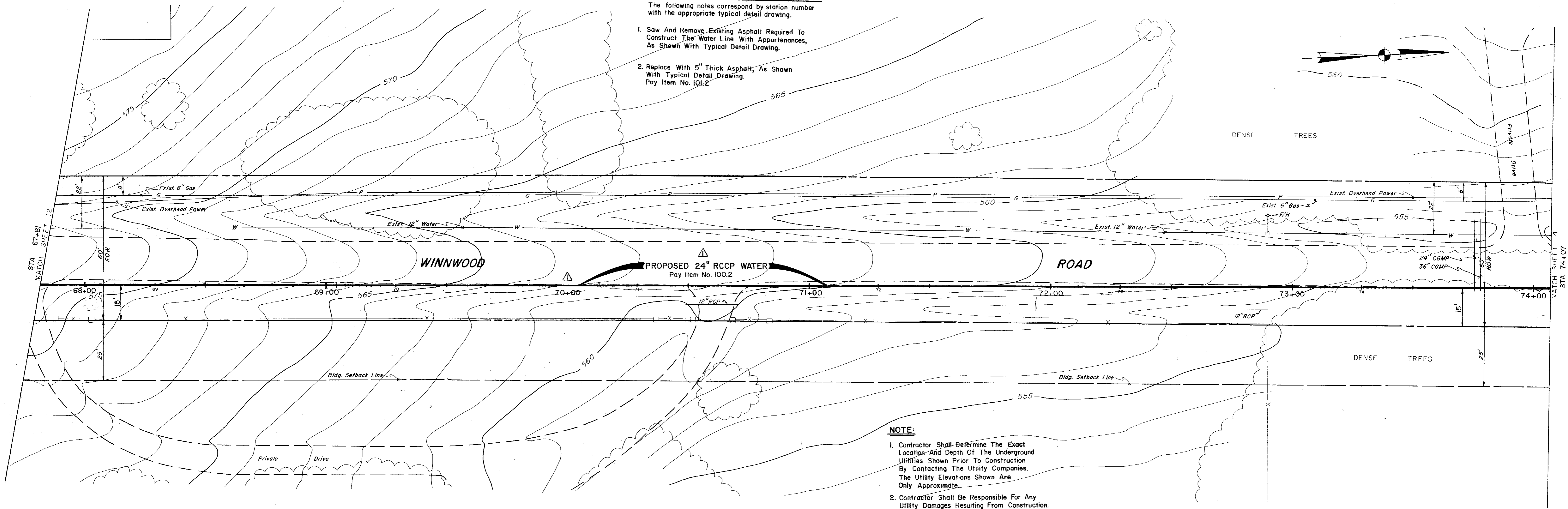
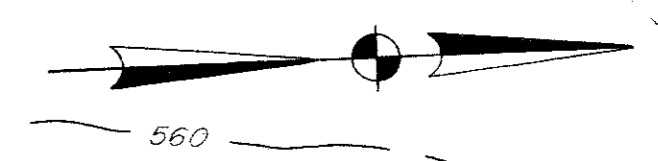


CONSTRUCTION NOTES:
(STA. 67+81 to 74+07 See Typ. Detail Sht.)

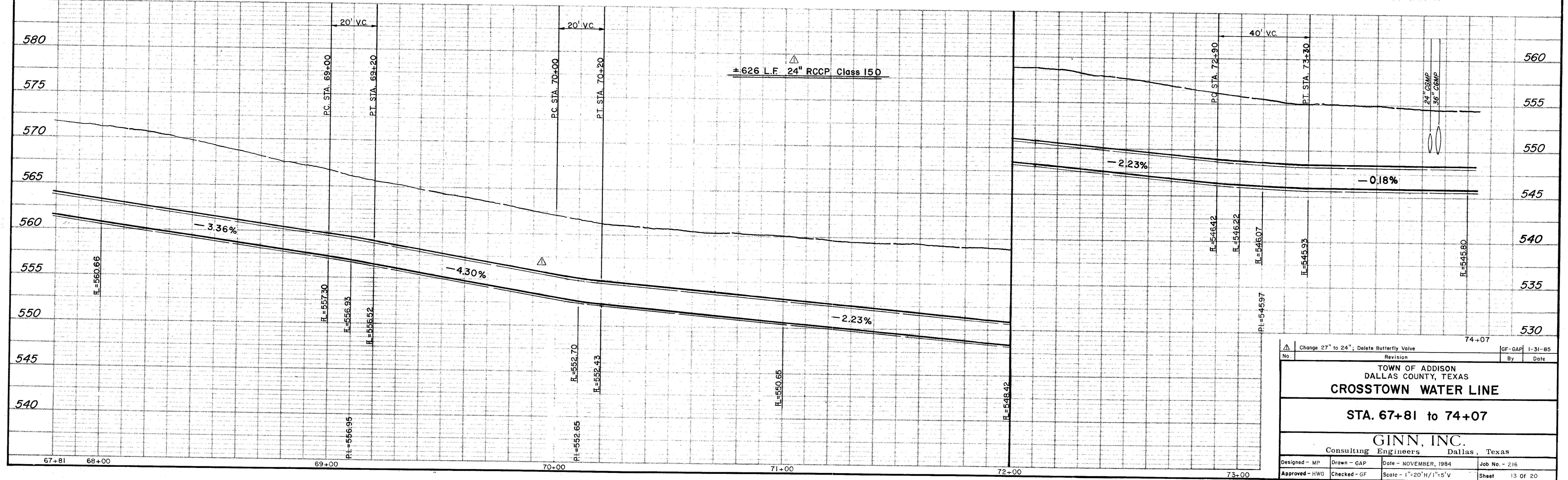
The following notes correspond by station number with the appropriate typical detail drawing.

1. Saw And Remove Existing Asphalt Required To Construct The Water Line With Appurtenances, As Shown With Typical Detail Drawing.
2. Replace With 5" Thick Asphalt, As Shown With Typical Detail Drawing. Pay Item No. 101.2



- NOTE:**
1. Contractor Shall Determine The Exact Location And Depth Of The Underground Utilities Shown Prior To Construction By Contacting The Utility Companies. The Utility Elevations Shown Are Only Approximate.
 2. Contractor Shall Be Responsible For Any Utility Damages Resulting From Construction.
 3. Contractor Shall Repair Or Replace Any Damaged Utility Equal To Or Better Than The Original Condition At No Additional Compensation.

B.M. "□" Plus Mark #26 At Sta. 71+00±
On Winnwood Rd. Elev. 559.71



| | | |
|---|--------------|------------------------|
| Change 27" to 24", Delete Butterfly Valve | | GF-GAP 1-31-85 |
| No. | Revision | By Date |
| TOWN OF ADDISON DALLAS COUNTY, TEXAS CROSSTOWN WATER LINE STA. 67+81 to 74+07 GINN, INC. Consulting Engineers Dallas, Texas | | |
| Designed - MP | Drawn - GAP | Date - NOVEMBER, 1984 |
| Approved - HWG | Checked - GF | Scale - 1"=20'H/1"=5'V |
| Job No. - 216 | | Sheet 13 of 20 |