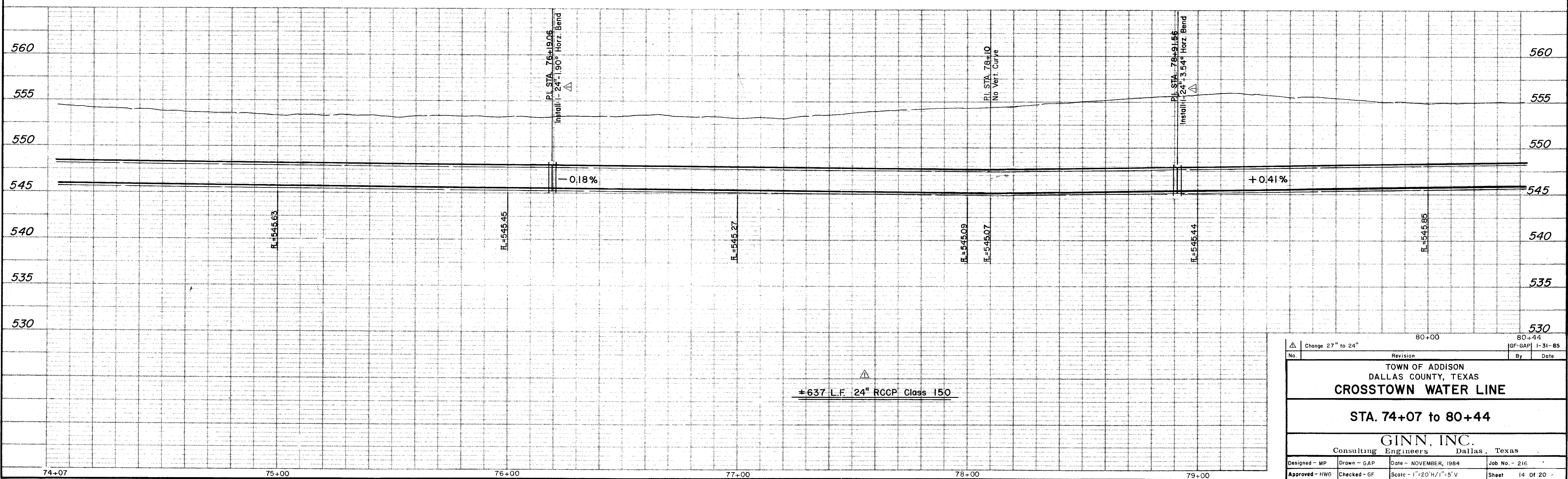


- NOTE:**
- Contractor Shall Determine The Exact Location And Depth Of The Underground Utilities Shown Prior To Construction By Contacting The Utility Companies. The Utility Elevations Shown Are Only Approximate.
 - Contractor Shall Be Responsible For Any Utility Damages Resulting From Construction.
 - Contractor Shall Repair Or Replace Any Damaged Utility Equal To Or Better Than The Original Condition At No Additional Compensation.

- CONSTRUCTION NOTES:**
(STA. 74+07 to 80+44 See Typ. Detail Sht.)
- The following notes correspond by station number with the appropriate typical detail drawing.
- Saw And Remove Existing Asphalt Required To Construct The Water Line With Appurtenances, As Shown With Typical Detail Drawing.
 - Replace With 5" Thick Asphalt, As Shown With Typical Detail Drawing. Pay Item No. 101.2

NOTE:
Block All Bends, Tees And Plugs As Required By Appurtenances. See Typical Detail Sheet.

B.M. "□" Plus Mark #26 At Sta. 71+00±
On Winnwood Rd. Elev. 559.71



Change 27" to 24"		80+00		80+44	
No.	Revision	By	Date	GF-GAP 1-31-85	
TOWN OF ADDISON DALLAS COUNTY, TEXAS CROSTOWN WATER LINE					
STA. 74+07 to 80+44					
GINN, INC. Consulting Engineers Dallas, Texas					
Designed - MP	Drawn - GAP	Date - NOVEMBER, 1984	Job No. - 216		
Approved - HWG	Checked - GF	Scale - 1"=20'H/1"=5'V	Sheet 14 OF 20		