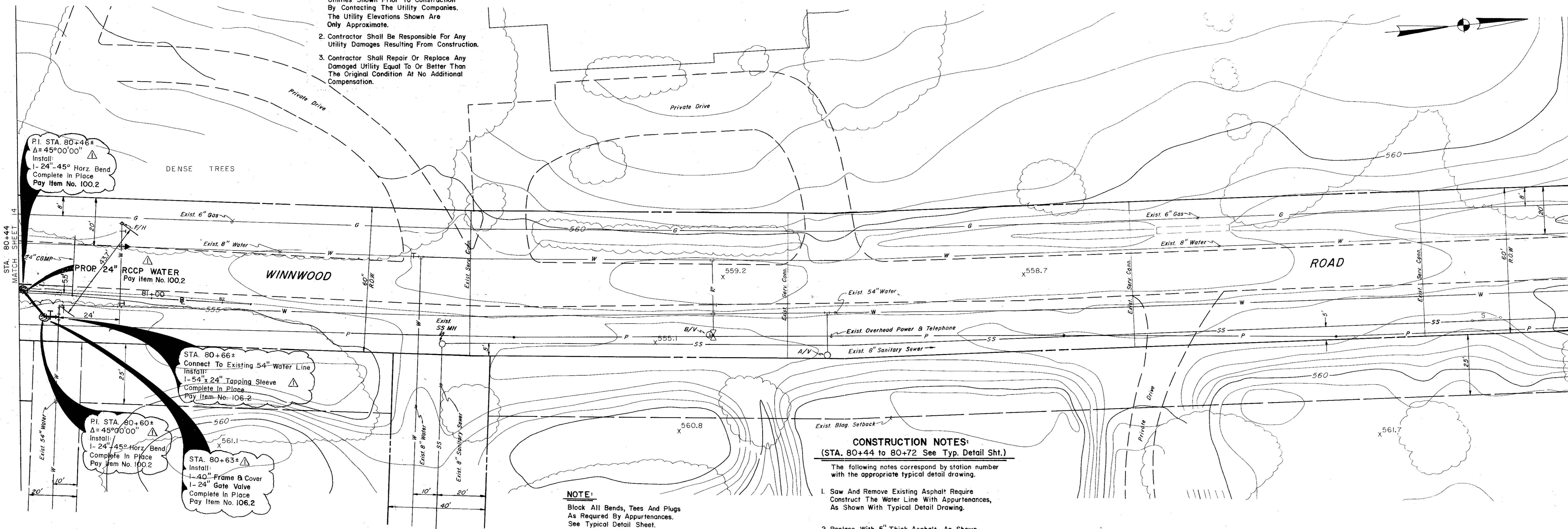


NOTE:

1. Contractor Shall Determine The Exact Location And Depth Of The Underground Utilities Shown Prior To Construction By Contacting The Utility Companies. The Utility Elevations Shown Are Only Approximate.
2. Contractor Shall Be Responsible For Any Utility Damages Resulting From Construction.
3. Contractor Shall Repair Or Replace Any Damaged Utility Equal To Or Better Than The Original Condition At No Additional Compensation.



PI STA 80+46±
Δ = 45°00'00"
Install:
1- 24" 45° Horz. Bend
Complete In Place
Pay Item No. 100.2

STA 80+66±
Connect To Existing 54" Water Line
Install:
1- 54" x 24" Tapping Sleeve
Complete In Place
Pay Item No. 106.2

PI STA 80+60±
Δ = 45°00'00"
Install:
1- 24" 45° Horz. Bend
Complete In Place
Pay Item No. 100.2

STA 80+63±
Install:
1- 40" Frame & Cover
1- 24" Gate Valve
Complete In Place
Pay Item No. 106.2

CONSTRUCTION NOTES:
(STA. 80+44 to 80+72 See Typ. Detail Sht.)

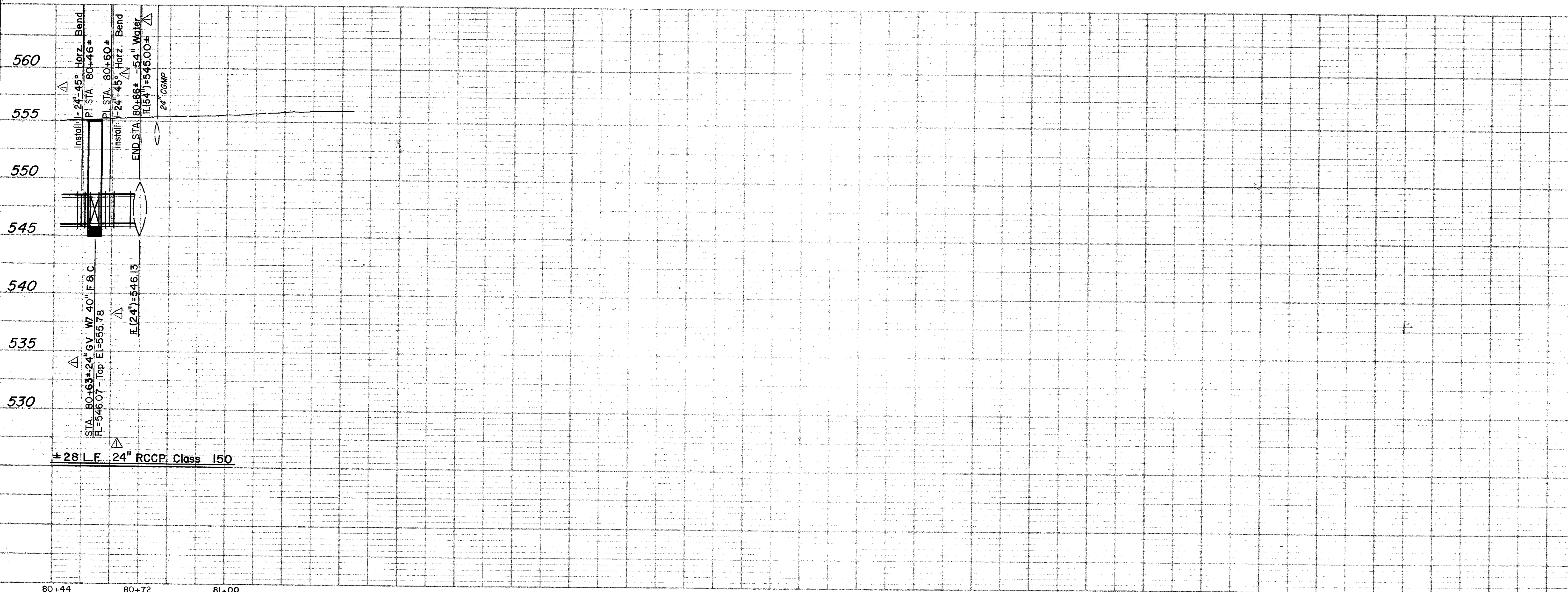
The following notes correspond by station number with the appropriate typical detail drawing.

1. Saw And Remove Existing Asphalt Require Construct The Water Line With Appurtenances, As Shown With Typical Detail Drawing.
2. Replace With 5" Thick Asphalt, As Shown With Typical Detail Drawing.
Pay Item No. 101.2

NOTE:

Block All Bends, Tees And Plugs As Required By Appurtenances. See Typical Detail Sheet.

B.M. "□" Cut In Bridge Wing On Belt Line Rd.
Elev. 563.97



No.	Change 27" to 24" - Used 45° Bends in place of 90° Bends	GF-GAP	1-31-85
Revision		By	Date
TOWN OF ADDISON DALLAS COUNTY, TEXAS CROSTOWN WATER LINE			
STA. 80+44 to 80+72			
GINN, INC. Consulting Engineers Dallas, Texas			
Designed - MP	Drawn - GAP	Date - NOVEMBER, 1984	Job No. - 216
Approved - HWG	Checked - GF	Scale - 1"=20'H/1"=5'V	Sheet 15 OF 20

80+44 80+72 81+00