

**CONSTRUCTION NOTES:**  
(STA. 1+89 to 7+87 See Typ. Detail Sht.)

- The following notes correspond by station number with the appropriate typical detail drawing.
1. Saw And Remove Existing Concrete Required To Construct The Water Line With Appurtenances, As Shown With Typical Detail Drawing. Pay Item No. 101.1
  2. Replace With 8" Thick, 3000 psi. Concrete Slab, As Shown With Typical Detail Drawing. Pay Item No. 101.1
  3. Special Care Shall Be Taken Not To Disturb The Loop Detectors. If Damaged During Construction, Repair Shall Be Made By The Contractor At No Additional Compensation. All Conduit Damaged Shall Be Repaired Or Replaced To The Engineers Satisfaction.

STA. 2+00±  
Install: 36" x 12" Tee  
±25 L.F. 12" PVC Water Line  
Tie To Existing 12" Water Line  
w/ 12" x 12" Tapping Sleeve (Mueller H-615)  
And Valve (Mueller H-667).  
Pay Item No. 106.4

Saw, Remove & Replace  
Exist. Pvm. As Required  
Pay Item No. 101.1

Lower 20 L.F.  
Exist. 8" Water Line  
Pay Item No. 106.6

Lower 15 L.F.  
Exist. 8" Water Line  
Pay Item No. 106.6

Pay Item No. 100.1  
**PROPOSED 36" RCCP WATER**

**CAUTION:**  
Water Line  
Do Not Disturb

**CAUTION:**  
Storm Sewer  
Do Not Disturb

**CAUTION:**  
Water Line  
Do Not Disturb

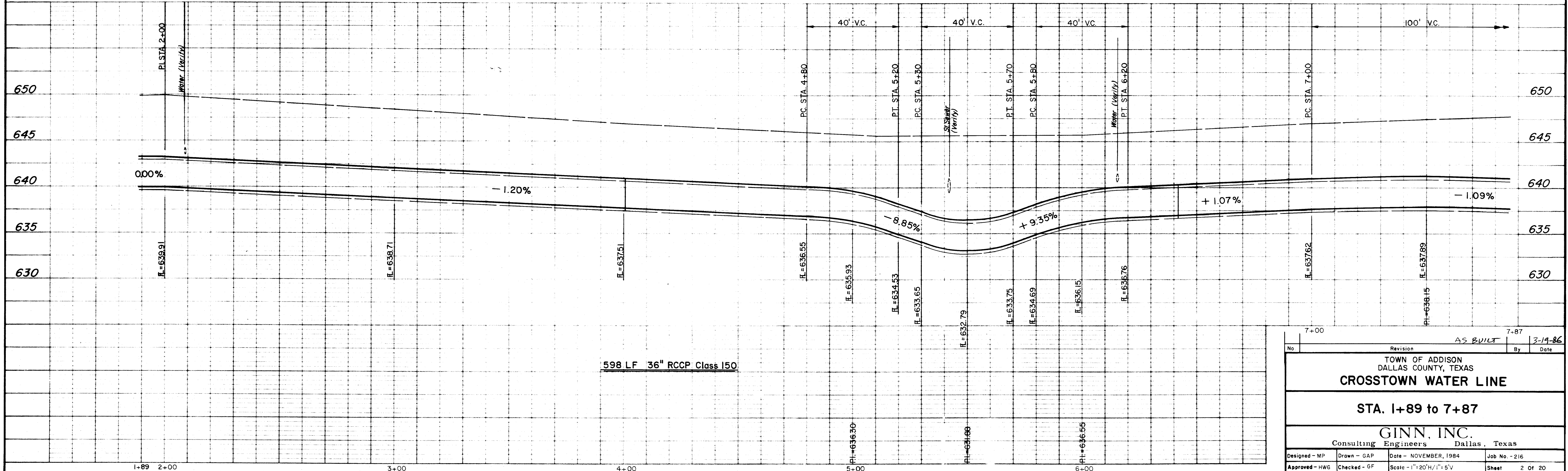
**Water Line Curve Data**  
Δ = 37°23'58"  
R = 619.38'  
L = 404.30'  
T = 209.65'

**Water Line Curve Data**  
Δ = 46°00'00"  
R = 633.61'  
L = 508.69'  
T = 268.65'

**NOTE:**

1. Contractor Shall Determine The Exact Location And Depth Of The Underground Utilities Shown Prior To Construction By Contacting The Utility Companies. The Utility Elevations Shown Are Only Approximate.
2. Contractor Shall Be Responsible For Any Utility Damages Resulting From Construction.
3. Contractor Shall Repair Or Replace Any Damaged Utility Equal To Or Better Than The Original Condition At No Additional Compensation.

B.M. "□" Cut On Top Of Curb In The Parking Lot East Of Quorum Dr. And ±105' South Belt Line Rd. Elev. 646.182



No.	Revision	AS BUILT	By	Date
<b>TOWN OF ADDISON</b> DALLAS COUNTY, TEXAS <b>CROSTOWN WATER LINE</b> <b>STA. 1+89 to 7+87</b> <b>GINN, INC.</b> Consulting Engineers Dallas, Texas				
Designed - MP	Drawn - GAP	Date - NOVEMBER, 1984	Job No. - 216	
Approved - HWG	Checked - GF	Scale - 1"=20'H/1"=5'V	Sheet 2 Of 20	