

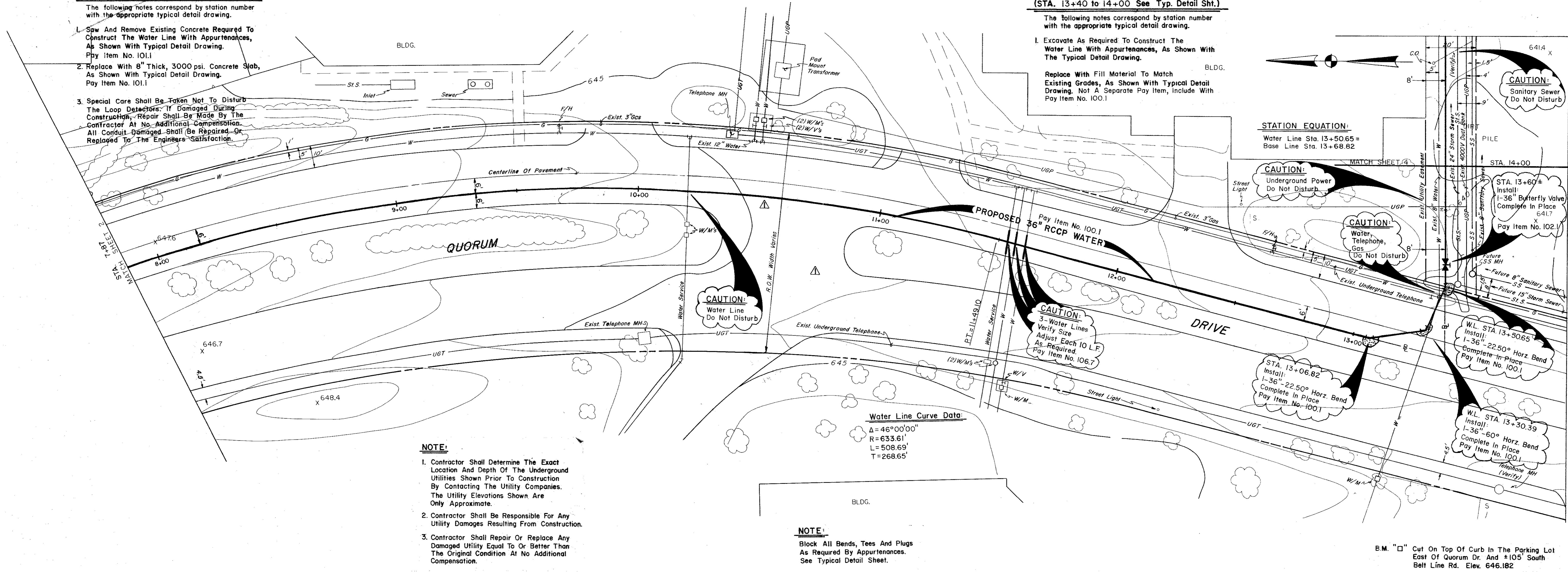
CONSTRUCTION NOTES:
(STA. 7+87 to 13+40 See Typ. Detail Sht.)

- The following notes correspond by station number with the appropriate typical detail drawing.
1. Saw And Remove Existing Concrete Required To Construct The Water Line With Appurtenances, As Shown With Typical Detail Drawing. Pay Item No. 101.1
 2. Replace With 8" Thick, 3000 psi. Concrete Slab, As Shown With Typical Detail Drawing. Pay Item No. 101.1
 3. Special Care Shall Be Taken Not To Disturb The Loop Detectors. If Damaged During Construction, Repair Shall Be Made By The Contractor At No. Additional Compensation. All Conduit Damaged Shall Be Repaired Or Replaced To The Engineers Satisfaction.

CONSTRUCTION NOTES:
(STA. 13+40 to 14+00 See Typ. Detail Sht.)

- The following notes correspond by station number with the appropriate typical detail drawing.
1. Excavate As Required To Construct The Water Line With Appurtenances, As Shown With The Typical Detail Drawing.
- Replace With Fill Material To Match Existing Grades, As Shown With Typical Detail Drawing. Not A Separate Pay Item, Include With Pay Item No. 100.1

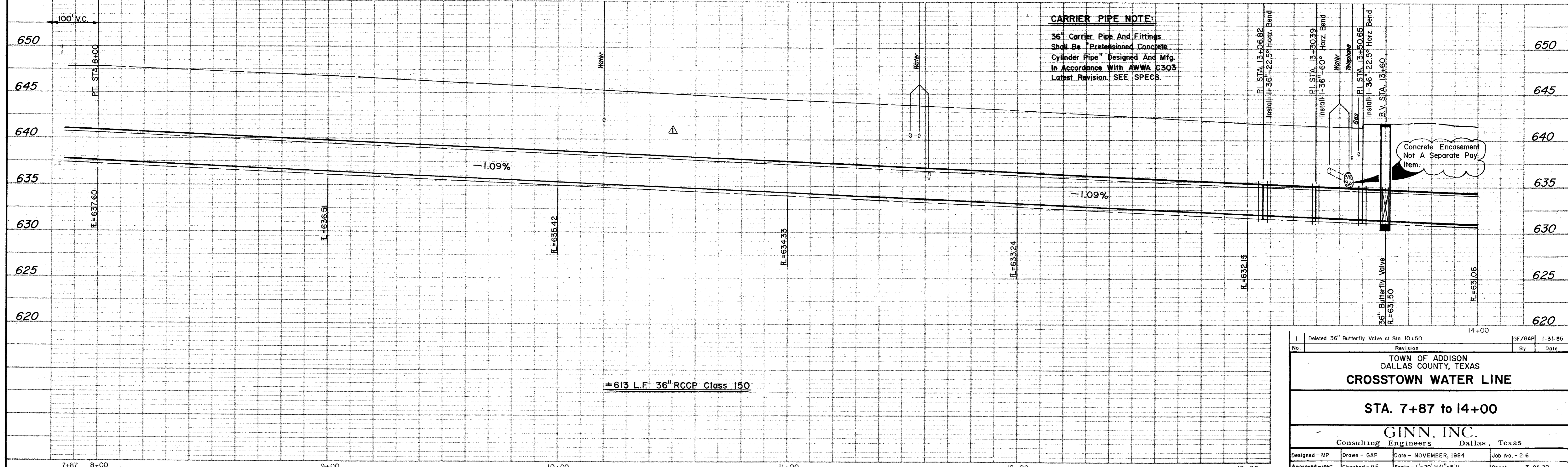
STATION EQUATION:
Water Line Sta. 13+50.65 =
Base Line Sta. 13+68.82



- NOTE:**
1. Contractor Shall Determine The Exact Location And Depth Of The Underground Utilities Shown Prior To Construction By Contacting The Utility Companies. The Utility Elevations Shown Are Only Approximate.
 2. Contractor Shall Be Responsible For Any Utility Damages Resulting From Construction.
 3. Contractor Shall Repair Or Replace Any Damaged Utility Equal To Or Better Than The Original Condition At No Additional Compensation.

NOTE:
Block All Bends, Tees And Plugs As Required By Appurtenances. See Typical Detail Sheet.

B.M. "□" Cut On Top Of Curb In The Parking Lot East Of Quorum Dr. And ±105' South Belt Line Rd. Elev. 646.182



CARRIER PIPE NOTE:
36" Carrier Pipe And Fittings Shall Be "Prestressed Concrete Cylinder Pipe" Designed And Mfg. In Accordance With AWWA C303 Latest Revision. SEE SPECS.

Deleted 36" Butterfly Valve at Sta. 10+50		GF/GAP	1-31-85
No.	Revision	By	Date
TOWN OF ADDISON DALLAS COUNTY, TEXAS CROSTOWN WATER LINE			
STA. 7+87 to 14+00			
GINN, INC. Consulting Engineers Dallas, Texas			
Designed - MP	Drawn - GAP	Date - NOVEMBER, 1984	Job No. - 216
Approved - HWG	Checked - GF	Scale - 1"=20' H/1"=5' V	Sheet 3 of 20