

NOTE:

- Contractor Shall Determine The Exact Location And Depth Of The Underground Utilities Shown Prior To Construction By Contacting The Utility Companies. The Utility Elevations Shown Are Only Approximate.
- Contractor Shall Be Responsible For Any Utility Damages Resulting From Construction.
- Contractor Shall Repair Or Replace Any Damaged Utility Equal To Or Better Than The Original Condition At No Additional Compensation.

CONSTRUCTION NOTES:
(STA. 14+00 to 18+20 See Typ. Detail Sht.)

- The following notes correspond by station number with the appropriate typical detail drawing.
- Excavate As Required To Construct The Water Line With Appurtenances, As Shown With The Typical Detail Drawing.
- Replace With Fill Material To Match Existing Grades, As Shown With Typical Detail Drawing. Not A Separate Pay Item, Include With Pay Item No. 100.1
- The Size Of The Bore Pits Shall Be Kept As Minimal As Required To Complete Construction.

STA 18+10 to STA. 19+02
Install:
1-54"x92" Steel Pipe
Complete In Place
Pay Item No. 105.1

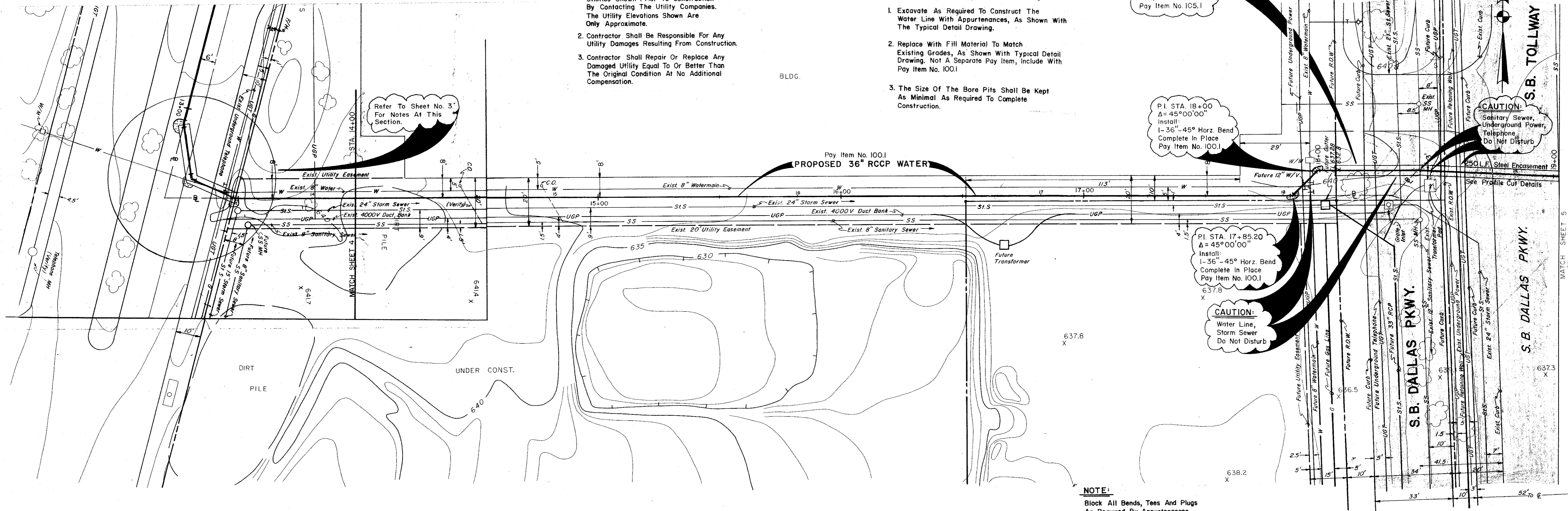
P.I. STA. 18+00
Δ = 45°00'00"
Install:
1-36"-45° Horiz. Bend
Complete In Place
Pay Item No. 100.1

P.I. STA. 17+85.20
Δ = 45°00'00"
Install:
1-36"-45° Horiz. Bend
Complete In Place
Pay Item No. 100.1

CAUTION:
Water Line,
Storm Sewer
Do Not Disturb

CAUTION:
Sanitary Sewer,
Underground Power,
Telephone
Do Not Disturb

NOTE:
Block All Bends, Tees And Plugs
As Required By Appurtenances.
See Typical Detail Sheet.



B.M. "□" Cut On Top Of West Median Curb
On Dallas Pkwy. Elev. 646.317

GENERAL NOTES:

- Plug Upper End Of Casing W/ 6" Min., 2000 psi. Concrete. Plug Lower End W/ 6" Min. Clay.
- Voids Between Earth Or Rock And Encasement Pipe Shall Be Filled With 1:7 Grout Including 5% to 40% Air Entrained By Pressure Injection.
- Carrier Pipe Shall Be Supported On A Continuous 6" Thick, 2000 psi. Concrete Cradle, In CMP Encasement Pipe Only. There Shall Be A Minimum Of Two Hold Down Jacks Per Joint.

NOTE:
Verify Locations Of All Utilities
Horizontally & Vertically Prior
To Beginning Construction.

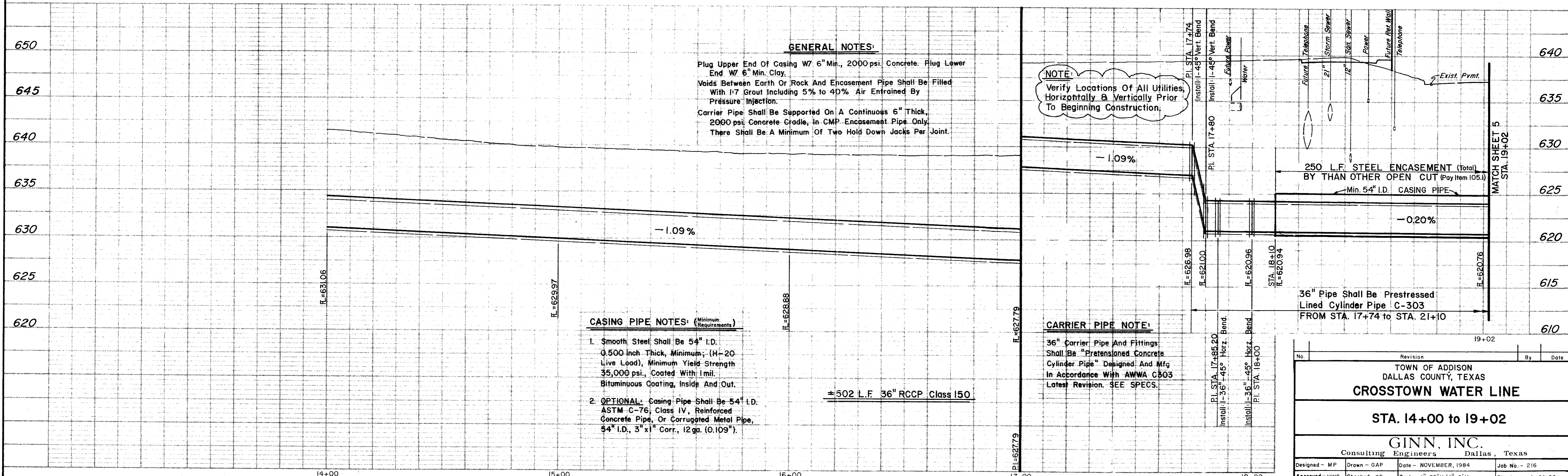
CASING PIPE NOTES: (Minimum Requirements)

- Smooth Steel Shall Be 54" I.D. 0.500 inch Thick, Minimum; (H-20 Live Load), Minimum Yield Strength 35,000 psi., Coated With Imil. Bituminous Coating, Inside And Out.
- OPTIONAL:** Casing Pipe Shall Be 54" I.D. ASTM C-76, Class IV, Reinforced Concrete Pipe, Or Corrugated Metal Pipe, 54" I.D., 3" x 1/8" Corr., 12 ga. (0.109").

±502 L.F. 36" RCCP Class 150

CARRIER PIPE NOTE:

36" Carrier Pipe And Fittings Shall Be "Prestressed Concrete Cylinder Pipe" Designed And Mfg In Accordance With AWWA C303 Latest Revision. SEE SPECS.



No.	Revision	By	Date
TOWN OF ADDISON DALLAS COUNTY, TEXAS CROSTOWN WATER LINE STA. 14+00 to 19+02 GINN, INC. Consulting Engineers Dallas, Texas			
Designed - MP	Drawn - GAP	Date - NOVEMBER, 1984	Job No. - 216
Approved - HWG	Checked - GF	Scale - 1"=20' H/1"=5' V	Sheet 4 OF 20