

**CONSTRUCTION NOTES:**  
(STA. 20+60 to 25+40 See Typ. Detail Sht.)

The following notes correspond by station number with the appropriate typical detail drawing.

1. Saw And Remove Existing Concrete Required To Construct The Water Line With Appurtenances, As Shown With Typical Detail Drawing.
2. Replace With 8" Thick, 3000 psi. Concrete Slab, As Shown With Typical Detail Drawing. Pay Item No. 101.1
3. The Size Of The Bore Pits Shall Be Kept As Minimal As Required To Complete Construction.

**NOTE:**

1. Contractor Shall Determine The Exact Location And Depth Of The Underground Utilities Shown Prior To Construction By Contacting The Utility Companies. The Utility Elevations Shown Are Only Approximate.
2. Contractor Shall Be Responsible For Any Utility Damages Resulting From Construction.
3. Contractor Shall Repair Or Replace Any Damaged Utility Equal To Or Better Than The Original Condition At No Additional Compensation.

STA. 19+02 to STA. 20+60  
Install:  
1-54" x 158' Steel Pipe  
Complete In Place  
Pay Item No. 105.1

633.4  
X

STA. 21+60  
Install:  
1-60" M.H. W/ Pilot Outlet  
1-36" Butterfly Valve  
Complete In Place  
Pay Item No. 103.1

PI. STA. 20+64.27  
Δ = 45°00'00"  
Install:  
1-36" 45° Horz. Bend  
Complete In Place  
Pay Item No. 100.1

PI. STA. 20+83.82  
Δ = 45°00'00"  
Install:  
1-36" 45° Horz. Bend  
Complete In Place  
Pay Item No. 100.1

Pay Item No. 106.5  
F.H. Relocation  
See Detail Sht. 19

Pay Item No. 100.1

**CAUTION:**  
Storm Sewer,  
Power,  
Telephone,  
Water Line  
Do Not Disturb

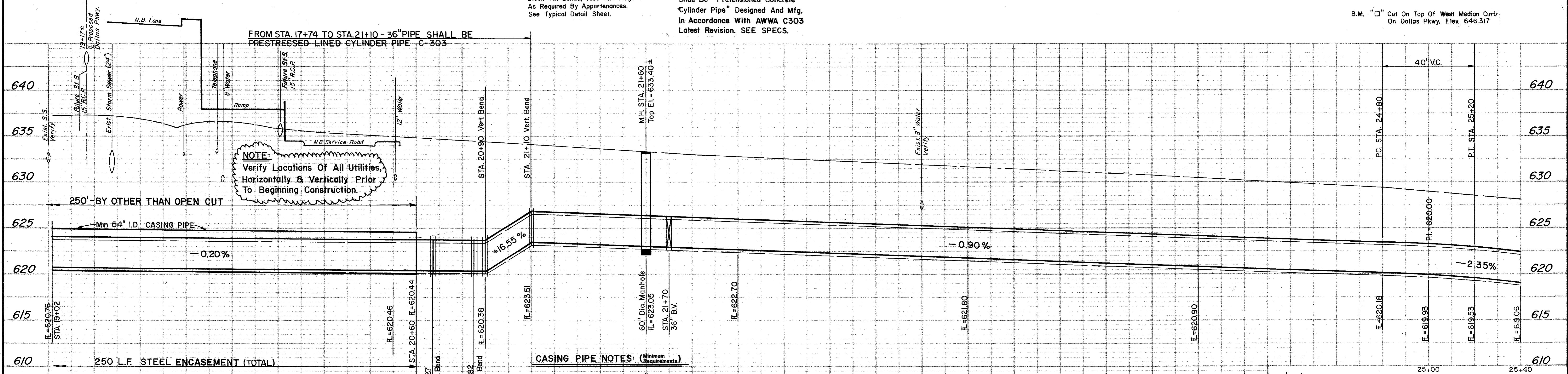
**CAUTION:**  
Water Line  
Do Not Disturb

**CAUTION:**  
Water Line,  
Sanitary Sewer  
Do Not Disturb

**CARRIER PIPE NOTE:**  
36" Carrier Pipe And Fittings  
Shall Be "Pretensioned Concrete  
Cylinder Pipe" Designed And Mfg.  
In Accordance With AWWA C303  
Latest Revision. SEE SPECS.

**NOTE:**  
Block All Bends, Tees And Plugs  
As Required By Appurtenances.  
See Typical Detail Sheet.

B.M. "□" Cut On Top Of West Median Curb  
On Dallas Pkwy. Elev. 646.317



**NOTE:**  
Verify Locations Of All Utilities,  
Horizontally & Vertically Prior  
To Beginning Construction.

**CASING PIPE NOTES:** (Minimum Requirements)

1. Smooth Steel Shall Be 54" I.D. 0.600 inch Thick, Minimum; (H-20 Live Load), Minimum Yield Strength 35,000 psi., Coated With Jmil. Bituminous Coating, Inside And Out.
2. OPTIONAL: Casing Pipe Shall Be 54" I.D. ASTM C-76, Class IV, Reinforced Concrete Pipe, Or Corrugated Metal Pipe, 54" I.D., 3" x 1" Corr., 12 ga. (0.109").

≈ 638 L.F. 36" RCCP Class 150

**GENERAL NOTES:**

Plug Upper End Of Casing W/ 6" Min., 2000 psi. Concrete. Plug Lower End W/ 6" Min. Clay.  
Voids Between Earth Or Rock And Encasement Pipe Shall Be Filled With 1:7 Grout Including 5% to 40% Air Entrained By Pressure Injection.  
Carrier Pipe Shall Be Supported On A Continuous 6" Thick, 2000 psi. Concrete Cradle, In CMP Encasement Pipe Only.  
There Shall Be A Minimum Of Two Hold Down Jacks Per Joint.

No.	Revision	By	Date
TOWN OF ADDISON DALLAS COUNTY, TEXAS <b>CROSSTOWN WATER LINE</b> STA. 19+02 to 25+40 <b>GINN, INC.</b> Consulting Engineers Dallas, Texas			
Designed - MP	Drawn - GAP	Date - NOVEMBER, 1984	Job No. - 216
Approved - HWG	Checked - GF	Scale - 1" = 20' H/1" = 5' V	Sheet 5 of 20